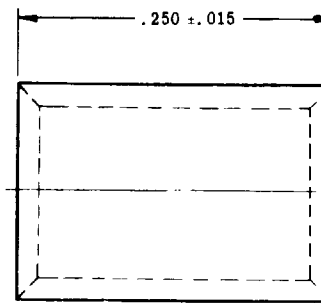
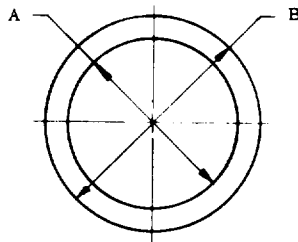


Review activities: Army -  
Navy - EC  
USAF - 11, 17, 99

User activities: Army -  
Navy - MC  
USAF -



FED. SUP CLASS  
5940

DASH NO.	COLOR CODE	A DIA		B DIA		MIL-C-22520/5 CRIMPING DIE DASH NO. (REF)	DIE CLOSURE
		MIN	MAX	MIN	MAX		
-101	NO COLOR	.098	.104	.121	.127	-33	B
-128	BLUE	.125	.131	.147	.155	-35	B
-149	PURPLE	.146	.152	.176	.182	-37	B
-156	YELLOW	.153	.159	.190	.196	-39	B
-175	BLUE	.172	.178	.212	.218	-41	B
-187	ORANGE	.184	.190	.224	.230	-43	B
-194	RED	.191	.197	.223	.229	-43	B
-199	NO COLOR	.196	.202	.232	.238	-43	B
-205	YELLOW	.202	.208	.242	.248	-19	B
-219	GREEN	.216	.222	.247	.253	-19	B
-225	PURPLE	.222	.228	.253	.259	-45	B
-232	ORANGE	.229	.235	.260	.266	-45	B
-261	YELLOW	.258	.264	.294	.300	-19	A
-275	NO COLOR	.272	.278	.303	.309	-43	A
-281	PURPLE	.278	.284	.328	.334	-41	A
-287	BLUE	.284	.290	.324	.330	-41	A
-297	GREEN	.294	.300	.332	.338	-41	A
-312	YELLOW	.309	.315	.359	.365	-39	A
-327	NO COLOR	.324	.330	.369	.375	-37	A
-348	ORANGE	.345	.351	.391	.397	-35	A
-359	PURPLE	.356	.362	.398	.402	-33	A
-375	YELLOW	.372	.378	.403	.409	-47	
-405	RED	.402	.408	.450	.456	-23	
-415	BLUE	.412	.418	.460	.466	-23	
-460	NO COLOR	.457	.463	.507	.513	-53	
-500	GREEN	.497	.503	.547	.553	-21	A

REPLACED BY TWO-PIECE COMBINATION (REF)	
MS21981 INNER FERRULE DASH NO.	MS21980 OUTER FERRULE DASH NO.
-058	-128, -149, -156
-063	-156, -175
-080	-156, -175, -187
-101	-187, -194, -199
-115	-199, -205, -219
-134	-225, -232, -261
-156	-232, -261, -275
-175, -187	-287, -297
-205, -219	-312, -327, -346

## NOTES:

- UNLESS SPECIFIED OTHERWISE, DIMENSIONS IN INCHES.
- MS21980 OUTER FERRULES ARE USED WITH MS21981 INNER FERRULE AS AN UNINSULATED REPLACEMENT.
- METRIC EQUIVALENTS (TO THE NEAREST .01 mm) ARE GIVEN FOR GENERAL INFORMATION ONLY AND ARE BASED UPON 1 INCH = 25.4 mm.

## REQUIREMENTS:

- MATERIAL: COPPER OR BRASS ALLOY, ROCKWELL F65 MAXIMUM
- FINISH: TIN PLATED, PER MIL-T-10727, TYPE 1. COLOR CODE IN ACCORDANCE WITH TABLE.
- REMOVE ALL BURRS AND SHARP EDGES. CHAMFER OR ROUNDED EDGES ACCEPTABLE.
- MIL-C-22520/5 CRIMPING DIES SHALL BE USED WITH M22520/5-01 BASIC CRIMPING TOOL (MIL-C-22520/5).

FOR DESIGN FEATURE PURPOSES, THIS STANDARD TAKES PRECEDENCE OVER ACQUISITION DOCUMENTS REFERENCED HEREIN. REFERENCED DOCUMENTS SHALL BE OF THE ISSUE IN EFFECT ON DATE OF INVITATIONS FOR BID.

REVISED AND REDRAWN

P.A. NAVY - AS Other Cust USAF - 85 ARMY -	TITLE  FERRULES, OUTER, UNINSULATED, SHIELD TERMINATING, TYPE I TWO-PIECE, CLASS I, FOR SHIELDED CABLE	MILITARY STANDARD	
		MS 21980	
ACQUISITION SPECIFICATION MIL-F-21608	SUPERSEDES:	SHEET 1 OF 2	

DD FORM 672-1 (Coordinated)

PREVIOUS EDITIONS OF THIS FORM ARE OBSOLETE. Project No. 5940-0943

PLATE NO. 23088

This military standard is approved for use by all Departments  
of the Department of Defense. Selection for all new  
engineering and design applications and for repetitive use shall  
be made from this document.

APPROVED 12 Oct 65  
REVISED (A) 20 Jan 65 (B) 1 Jul 65 (C) 16 Sept 68 (D) 9 Jul 1973 (E) 13 Aug 82

FED. SUP CLASS  
5940

E

REVIEWER SYMBOLS:  
Army - A  
Navy - N  
USAF - U

REVIEWER SYMBOLS:  
Army - A  
Navy - N  
USAF - U

"Review/user information is current as of the date of this document.  
For future coordination of changes to this document, draft circulation  
should be based on the information in the current DODSS."

This military standard is approved for use by all Departments  
& Agencies of the Department of Defense. Selection for all new  
engineering and design applications and for repetitive use shall  
be made from this document.

INCHES	mm	INCHES	mm
.015	0.38	.272	6.91
.098	2.49	.278	7.06
.104	2.64	.284	7.21
.121	3.07	.290	7.37
.125	3.18	.294	7.47
.127	3.23	.300	7.62
.131	3.33	.303	7.70
.146	3.71	.309	7.85
.147	3.73	.315	8.00
.152	3.86	.324	8.23
.153	3.89	.328	8.33
.155	3.94	.330	8.38
.159	4.04	.332	8.43
.172	4.37	.334	8.48
.176	4.47	.338	8.59
.178	4.52	.345	8.76
.182	4.62	.351	8.92
.184	4.67	.356	9.04
.190	4.83	.359	9.12
.191	4.85	.362	9.19
.196	4.98	.365	9.27
.197	5.00	.369	9.37
.202	5.13	.372	9.45
.208	5.28	.375	9.53
.212	5.38	.378	9.60
.216	5.49	.396	10.06
.218	5.54	.397	10.08
.222	5.64	.402	10.21
.223	5.66	.403	10.24
.224	5.69	.408	10.36
.228	5.79	.409	10.39
.229	5.82	.412	10.46
.230	5.84	.418	10.62
.232	5.89	.450	11.43
.235	5.97	.456	11.58
.238	6.05	.457	11.61
.242	6.15	.460	11.68
.247	6.27	.463	11.76
.248	6.30	.466	11.84
.250	6.35	.497	12.62
.253	6.43	.503	12.78
.258	6.55	.507	12.88
.259	6.58	.513	13.03
.260	6.60	.547	13.89
.264	6.71	.553	14.05
.266	6.76		

P.A.  
NAVY - AS  
Other Cust  
USAF - 85  
ARMY -

TITLE

FERRULES, OUTER, UNINSULATED, SHIELD TERMINATING,  
TYPE I TWO-PIECE, CLASS I, FOR SHIELDED CABLE

PROCUREMENT SPECIFICATION  
MIL-F-21608

SUPERSEDED:

MILITARY STANDARD

MS 21980

SHEET 2 OF 2

APPROVED 12 Oct 65  
E FOR CHANGES SEE SHEETS 1 AND 2

DD FORM 1 MAR 70 672-1 (Coordinated)

PREVIOUS EDITIONS OF THIS FORM ARE OBSOLETE.

Project No. 5940-0943

PLATE NO. 20000