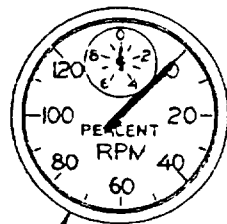
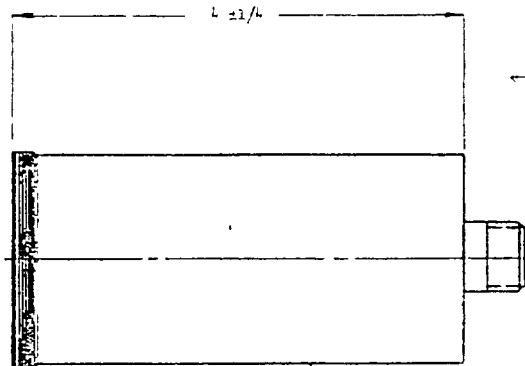


NOTICE—When Government drawings, specifications, or other data are used for any purpose other than in connection with a definitely related Government procurement operation the United States Government thereby incurs no responsibility nor any obligation whatsoever; and the fact that the Government may have furnished such data in any way supplied the said drawings, specifications, or other data is not to be regarded by implication or otherwise as in any manner licensing the holder in any other person or corporation or conveying any rights or permits as to manufacture use or sell any patented invention that may in any way be related thereto.

This standard has been approved by the Bureau of Naval Weapons Department of the Navy and is mandatory for use by that activity. All other military activities are required to employ this standard where suitable.

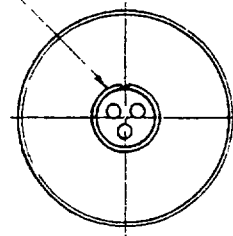


DIAL AND POINTER SHOWS FOR REFERENCE ONLY. SEE PROCUREMENT SPECIFICATION FOR DETAIL REQUIREMENTS.



CASE SHALL CONFORM TO MS33635, 2-INCH SIZE.

CONNECTOR FOR -1 SHOWN



MS PART NO	TYPE	ELECTRICAL RECEPTACLE CONNECTOR
MS 21971 -1	UNLIGHTED	MS 3102-10S-3F
MS 21971 -2	LIGHTED	MS 3102-14-5F

DIMENSIONS IN INCHES

THIS STANDARD TAKES PRECEDENCE OVER DOCUMENTS REFERENCED HEREIN.
REFERENCED DOCUMENTS SHALL BE OF THE ISSUE IN EFFECT ON DATE OF INVITATIONS FOR BID.

P A. Wep Other Cust	TITLE INDICATOR, TACHOMETER, ELECTRIC, 0-120 PERCENT RPM, 2 INCH SIZE	MILITARY STANDARD MS21971 (WEP)
PROCUREMENT SPECIFICATION MIL-I-22596 (Wep)	SUPERSEDES	SHEET 1 OF 1

DD FORM 1 SEP 57 672-1 (Limited coordination)

PREVIOUS EDITIONS OF THIS FORM ARE OBSOLETE

APPROVED 15 August 1970 REVISED

FED SUP CLASS
6620