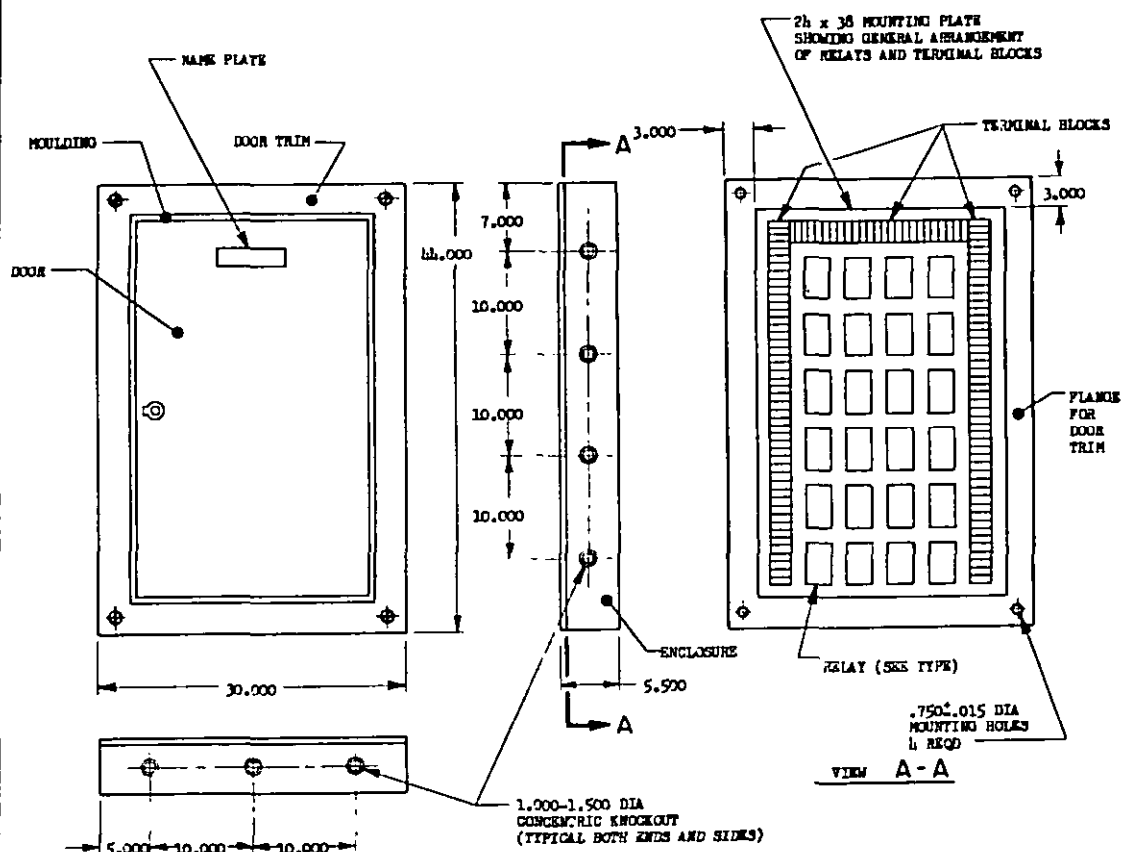


USAF - 11, 62, 85  
Navy - 13

This military standard is approved by the Department of the Air Force and the Naval Air Systems Command and is mandatory for use by these activities. All other military activities are required to employ this standard where suitable.



DASH NO.	TYPE	NO. OF RELAYS	RELAY TYPE
-1	I	24	DPST
-2	II	24	16 DPST 8 DPDT

**MATERIAL:** ENCLOSURE, MOUNTING PLATE, DOOR AND TRIM; SHEET STEEL, .120±.006 THICKNESS, CORROSION RESISTANT STEEL OR STEEL SUITABLY TREATED.

DIMENSIONS IN INCHES. UNLESS OTHERWISE SPECIFIED, TOLERANCE: DECIMALS  $\pm .125$ .

FOR DESIGN FEATURE PURPOSES, THIS STANDARD TAKES PRECEDENCE OVER PROCUREMENT DOCUMENTS REFERENCED HEREIN.  
REFERENCED DOCUMENTS SHALL BE OF THE ISSUE IN EFFECT ON DATE OF INVITATIONS FOR BID.

APPROVED	9 AUG 67	REVISED
----------	----------	---------

P.A. USAP - 11 Other Cast Navy - AS	TITLE  PAKEL RELAY, PILOT, ENCLOSED, AIRPORT LIGHTING (TYPES I AND II)	MILITARY STANDARD  <b>MS21961(ASG)</b>
PROCUREMENT SPECIFICATION NTL-B-801C	SUPERSEDES:	SHEET 1 OF 3

**DD FORM 672-1** (limited coordination)  
ASD use only

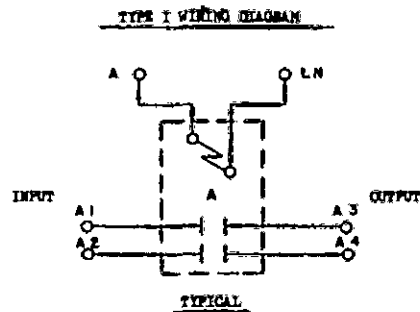
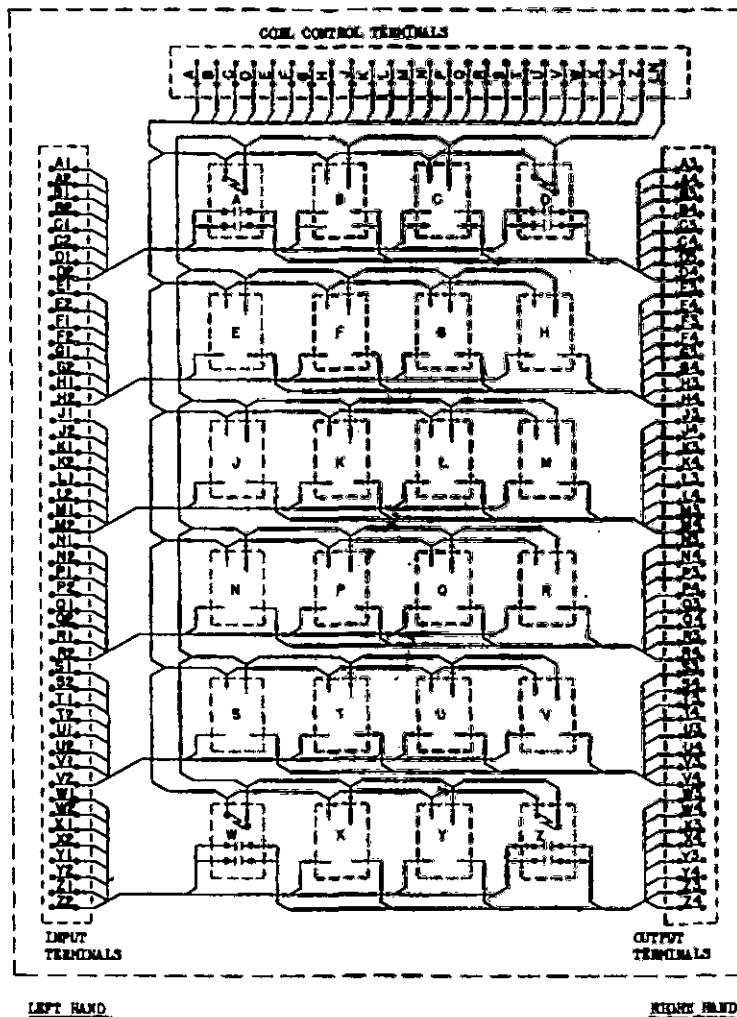
PREVIOUS EDITIONS OF THIS FORM ARE OBSOLETE.

DATE

FED. SUP CLASS  
6110

Review activities:  
USAF - 11, 82, 85  
NAVY - AS

This military standard is approved by the Department of the Air Force and the Naval Air Systems Command and is mandatory for use by these activities. All other military activities are required to employ this standard where suitable.



APPROVED 9 AUG 67 REVISED

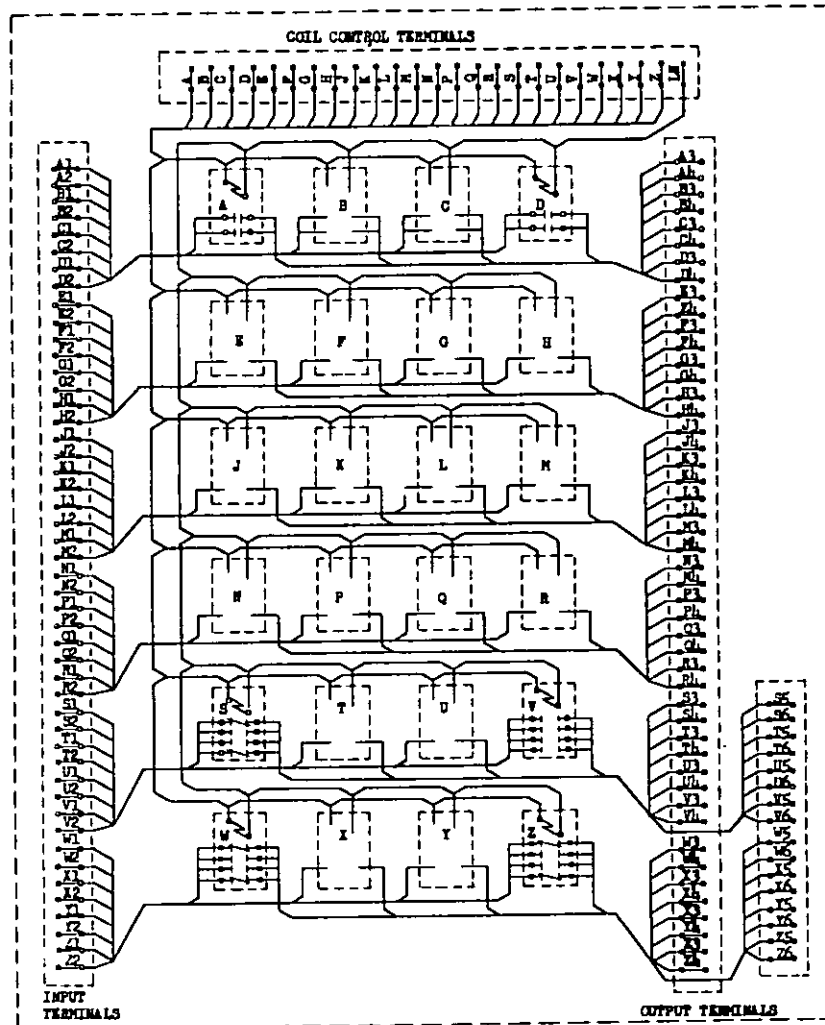
P.A. USAF - 11 Other Cost NAVY - AS	TITLE  PANEL RELAY, PILOT, ENCLOSED, AIRPORT LIGHTING (TYPES I AND II)	MILITARY STANDARD <b>MS21961 (ASG)</b>
PROCUREMENT SPECIFICATION MIL-P-8245	SUPERSEDES:	SHEET 2 OF

DD FORM 672-1 (Limited coordination)  
ASG use only

PREVIOUS EDITIONS OF THIS FORM ARE OBSOLETE.

Review activities: USAF - 11, 82, 85  
Navy - AS

This military standard is approved by the Department of the Air Force and the Naval Air Systems Command and is mandatory for use by these activities. All other military activities are required to employ this standard where suitable.

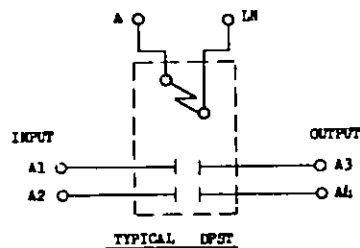


LEFT HAND

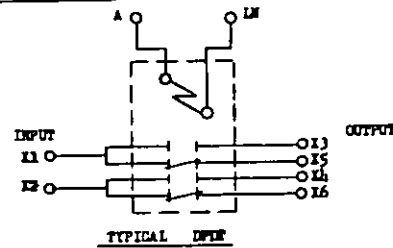
RIGHT HAND

A THRU R ARE DPST RELAYS AND ARE WIRED IDENTICALLY.  
S THRU Z ARE DPST RELAYS AND ARE WIRED IDENTICALLY.

TYPE II WIRING DIAGRAM



TYPICAL DPST



TYPICAL DPST

P.A. USAF - 11 Other Comd Navy - AS	TITLE  PANEL RELAY, PILOT, ENCLOSED, AIRPORT LIGHTING (TYPES I AND II)	MILITARY STANDARD <b>MS21961 (ASG)</b>
PROCUREMENT SPECIFICATION MIL -P-8945	SUPERSEDES:	SHEET 3 OF

DD FORM 672-1 (Limited coordination)  
ASG use only

PREVIOUS EDITIONS OF THIS FORM ARE OBSOLETE.

\*U.S. GOVERNMENT PRINTING OFFICE: 1967-80-110/11\*

APPROVED 9 AUG 67  
REVISED