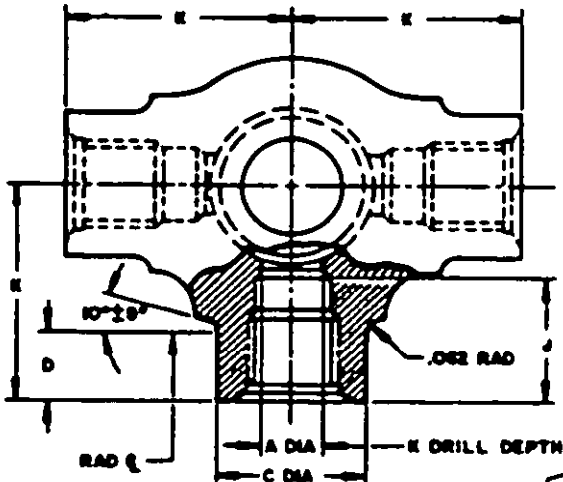


FED. SUP CLASS
4730



CONTOUR AND MOUNTING END IS ACCORDANCE WITH STANDARD MEE236, STYLE A, FOR FLOW SIZE SPECIFIED

BOSS IS ACCORDANCE WITH M2336-49 FOR APPLICABLE TUBE SIZE, EXCEPT TAP DRILL DEPTH J WHICH SHALL CONFORM TO TABLE BELOW. THREAD T. 3 ENDS

LOW FLOW SIZE DASH NUMBER	TUBE OD	THREAD T REF	A	B	C ±.031	D ±.031	J	E	
41	1/4	1/16-28 UNF-28	.313	.300	.300	.300	.230	1.023	
42	5/16	1/8-28 UNF-28	.364		.300	.300		.230	1.054
43	3/8	9/16-18 UNF-18	.460		.300	.300		.230	1.120

HIGH FLOW SIZE DASH NUMBER	TUBE OD	THREAD T REF	A	B	C ±.031	D ±.031	J	E	
44	1/4	1/16-28 UNF-28	.313	.300	.300	.307	.230	1.270	
45	5/16	1/8-28 UNF-28	.370		.300	.300		.313	1.300
46	3/8	9/16-18 UNF-18	.460		.300	.300		.370	1.313
48	1/2	3/4-16 UNF-16	.623		.300	1.120		.430	.300

(A) MATERIAL: ALUMINUM-ALLOY EXTRUSION, 6061 SPECIFICATION QQ-A-359/4, TEMPER T4, ARTIFICIALLY AGED.
ALUMINUM-ALLOY FORGING, 6061, SPECIFICATION QQ-A-351, COMPOSITION A, TEMPER T6.

FINISH: SEE PROCUREMENT SPECIFICATION.

(B) ALL MACHINED SURFACES FINISHED TO 250 RMS EXCEPT AS NOTED.
SURFACE FINISH IN ACCORDANCE WITH STANDARD 484 BALL.
FITTINGS SHALL BE FREE FROM ALL HAZARDOUS BURRS AND CHIPPERS WHICH MIGHT BECOME ENLARGED UNDER USAGE.
DIMENSIONS IN INCHES, UNLESS OTHERWISE SPECIFIED, TOLERANCES: DECIMALS ± .010, ANGLES ± 1/16°.

INSTALLATION IN ACCORDANCE WITH STANDARD MEE236.

FOR BORE FEATURES FORMER, THIS STANDARD TAKES PRECEDENCE OVER PROCUREMENT DOCUMENTS REFERENCED HEREIN.
REFERENCED DOCUMENTS SHALL BE OF THE DATE IN EFFECT ON DATE OF DIVISIONS FOR BLD.

(C)

Draw revision:

Revise revision:
D8A - C8

This military standard is intended for use by all Departments and Agencies of the Department of Defense. It shall be of uniform application and shall be applicable to the extent of the Department of Defense. It shall be used in all drawings.

APPROVED 20 NOV 67 REVISED 18 JAN 66 13 JUN 70

P.A. AIR FORCE - 02 Other Code NAVY - 45	TITLE BODY, CLUSTER FITTING, THREE WAY, INTERNAL BOSS	MILITARY STANDARD
		MS 21960
PROCUREMENT SPECIFICATION MS-P-6800	SUPERSEDES:	SHEET 1 OF 1