

INCH-POUND

MS21949B
20 September 2000
 SUPERSEDING
 MS21949A
 13 May 1966

DETAIL SPECIFICATION SHEET

BOLT-CLUSTER FITTING, SINGLE PORT-FLARE

This specification is approved for use by all Departments and Agencies
 of the Department of Defense .

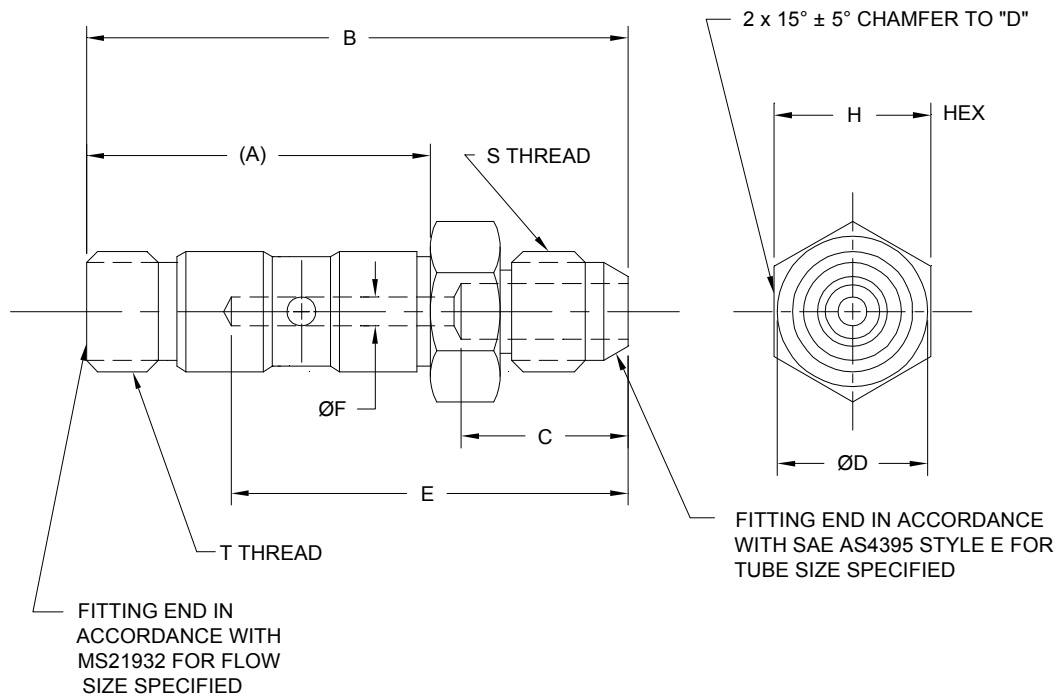


FIGURE 1. Bolt, Cluster Fitting.

MS21949B

TABLE IA. Dimensions for low flow sizes

Low flow size		Tube OD	Thread S SAE AS8879	Thread T SAE AS8879
Al alloy 7075	Al alloy 1/ 2014/2024			
W3L	-3L	.187	.375-24UNJF-3A	.4375-20UNJF-3A
W4L	-4L	.250	.4375-20UNJF-3A	
W5L	-5L	.312	.500-20UNJF-3A	
W6L	-6L	.375	.5625-18UNJF-3A	
W8L	-8L	.500	.750-16UNJF-3A	

TABLE IA. Dimensions for low flow sizes - Continued

A	B	C ± .062	D ± .010	E ± .062	F ± .003	H Hex + .003 - .010
1.438	2.229	—	.605	1.625	.125	.625
1.438	2.332	—	.668	1.750	.172	.688
1.438	2.394	.750	.730	1.812	.203	.750
1.438	2.431	.750	.855	1.812	.203	.875
1.438	2.532	.750	.980	1.937	.203	1.000

1/ Aluminum alloy 2014 and 2024 parts are cancelled. Use Aluminum alloy 7075 parts for new design. Cancelled parts may be used till stock is exhausted.

MS21949B

TABLE IB. Dimensions for high flow sizes

High flow size		Tube OD	Thread S SAE AS8879	Thread T SAE AS8879
Al alloy 7075	Al alloy 1/ 2014/2024			
W6H	-6H	.375	.5625-18UNJF-3A	.5625-18UNJF-3A
W8H	-8H	.500	.750-16UNJF-3A	
W10H	-10H	.625	.875-14UNJF-3A	

TABLE IB. Dimensions for high flow sizes - Continued

A	B	C ± .062	D ± .010	E ± .062	F ± .003	H Hex
1.688	2.681	—	.855	2.000	.297	.875 + .003 - .010
1.688	2.782	—	.980	2.125	.391	1.000 + .003 - .010
1.688	2.883	.937	1.103	2.188	.422	1.125 + .003 - .012

1/ Aluminum alloy 2014 and 2024 parts are cancelled. Use Aluminum alloy 7075 parts for new design.

Cancelled parts may be used till stock is exhausted.

REQUIREMENTS:

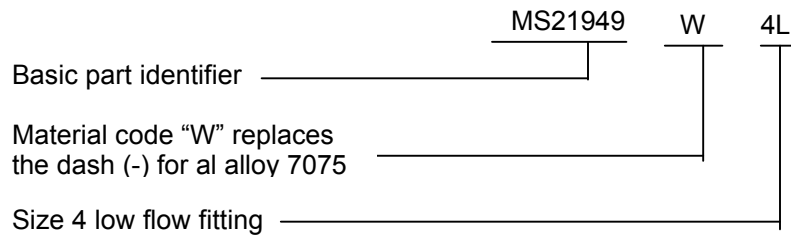
1. The requirements for acquisition of the product described herein shall consist of this detail specification sheet and SAE AS4875/1.
2. Material: Aluminum alloy bar 7075-T73 per AMS-QQ-A-225/9.
3. Finish: See standard SAE AS4875. Aluminum alloy 7075 fittings shall be dyed brown.
4. All outside machined surfaces shall be finished to 125 μ in R_a ; all inside machined surfaces and hex flats of bar stock shall be finished to 250 μ in R_a , unless otherwise specified. Surface finish shall be in accordance with ASME B46.1.
5. Fittings shall be free of all burrs and slivers.

MS21949B

NOTES:

1. Dimensions in inches. Unless otherwise specified, tolerances: decimals $\pm .010$, angles $\pm 1/2^\circ$.
2. Dimensioning and tolerancing per ASME Y14.5.
3. Part Identification number (PIN)

Example of PIN: MS21949W4L



Custodians:
Navy - AS
DLA - CC

Preparing activity:
DLA-CC
(Project 4730-2067)

Review activity:
Navy - SA