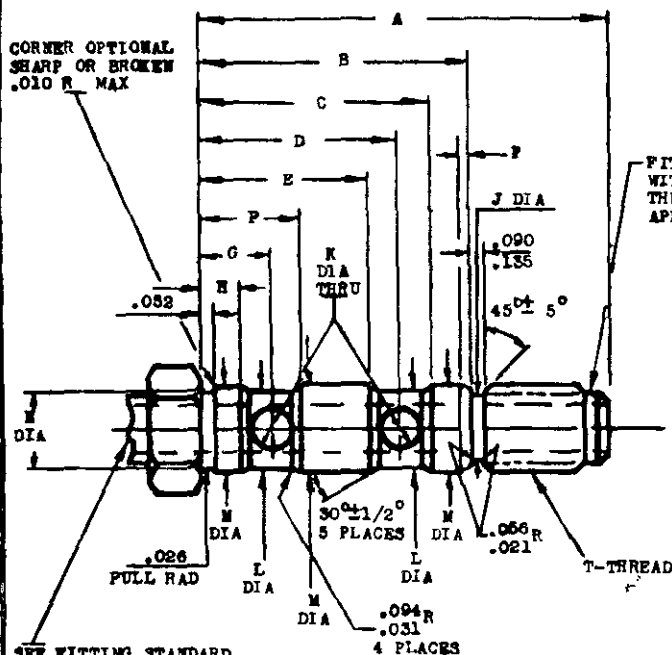


NOTICE: When Government drawings, specifications, or other data are used for any purpose other than in connection with a definitely related Government procurement operation, the United States Government assumes no responsibility, nor any obligation whatsoever; and the fact that the Government may have formulated, furnished, or in any way supplied the said drawings, specifications, or other data is not to be regarded by implication or otherwise as an endorsement, approval, or recommendation of the product, process, or procedure shown, or as a warranty, expressed or implied, or as a representation that the product, process, or procedure shown is the best available, or that it meets the stated requirements.



-FITTING END IN ACCORDANCE WITH AND-10056 EXCEPT FOR THREAD LENGTH AND RELIEF FOR APPLICABLE TUBE SIZE.

SEE FITTING STANDARD
FOR HEX. SIZE.



SEE FITTING STANDARD
FOR DRILL DIAS. AND
DRILL DEPTHS.

DIMENSIONS FOR SIZE 4 LOW FLOW
LISTED BELOW ARE CONSTANT FOR
ALL LOW FLOW FITTINGS.

SIZE	TUBE O.D.	THREAD T (REF)	A	B	C	D	E	F	G	H	$+ \frac{J}{.003}$	$+ \frac{K}{-.003}$
LOW FLOW 4	1/4	7/16-20 UNF-3A	3.162	2.094	1.726	1.540	1.354	.726	.840	.354	.363	.189
HIGH FLOW 4	1/4	7/16-20 UNF-3A	3.737	2.469	2.077	1.820	1.563	.891	.634	.377	.363	.300
HIGH FLOW 5	5/16	1/2-20 UNF-3A	3.737	2.469	2.077	1.820	1.563	.891	.634	.377	.425	.300
HIGH FLOW 6	3/8	9/16-18 UNF-3A	3.737	2.469	2.077	1.820	1.563	.891	.634	.377	.480	.300
HIGH FLOW 8	1/2	3/4-16 UNF-3A	3.737	2.469	2.077	1.820	1.563	.891	.634	.377	.559	.300

SIZE	TUBE O.D.	THREAD T (REF)	+ L - .006	+ M - .0004	N	P
LOW FLOW 4	1/4	7/16-20 UNF-3A	.433	.4989	.425	.060
HIGH FLOW 4	1/4	7/16-20 UNF-3A	.740	.8114	.738	.065
HIGH FLOW 5	5/16	1/2-20 UNF-3A	.740	.8114	.738	.065
HIGH FLOW 6	3/8	9/16-18 UNF-3A	.740	.8114	.738	.065
HIGH FLOW 8	1/2	3/4-18 UNF-3A	.740	.8114	.738	.065

CANCELLED AFTER 14 JUNE 1979
NO SUPERSEDING STANDARD

THIS DOCUMENT HAS BEEN PROMULGATED BY THE DEPARTMENT OF DEFENSE AS THE MILITARY STANDARD TO LIMIT THE SELECTION OF THE ITEM, PRODUCT, OR DESIGN COVERED HEREIN IN ENGINEERING, DESIGN, AND PROCUREMENT. THIS STANDARD SHALL BECOME EFFECTIVE NOT LATER THAN 90 DAYS AFTER THE LATEST DATE OF APPROVAL SHOWN. THIS STANDARD TAKES PRECEDENCE OVER DOCUMENTS REFERENCED HEREIN. REFERENCED DOCUMENTS SHALL BE OF THE ISSUE IN EFFECT ON DATE OF INVITATIONS FOR BID.

ALL OUTSIDE MACHINED SURFACES FINISHED TO 125 R.M.S. MAX. EXCEPT AS NOTED.

ALL INSIDE MACHINED SURFACES FINISHED TO 250 R.M.S. MAX. EXCEPT AS NOTED.

"N" MACHINED SURFACES FINISHED TO 16 R.M.S. MAX. AND CONCENTRIC TO EACH OTHER WITHIN .0005 FULL INDICATOR READING.

"L" AND "M" DIA'S. AND THRD. MUST BE CONCENTRIC WITH .005 FULL INDICATOR READING.

PITTINGS SHALL BE FREE FROM ALL HANGING BURRS AND SLIVERS WHICH MIGHT BECOME DISLODGED UNDER USAGE.
DIMENSIONS IN INCHES: TOLERANCE $\pm .010$ UNLESS OTHERWISE SPECIFIED. ANGLES $\pm 1/8^\circ$ UNLESS OTHERWISE SPECIFIED.

THIS IS A DESIGN STANDARD. NOT USED AS A PART NUMBER.

CUSTODIANS Navy - BuAer	MILITARY STANDARD	MS 21948 (AER)
PROCUREMENT SPECIFICATION NONE	FITTING END - BOLT CLUSTER FITTING DOUBLE PORT THROUGH - FLAKE	
		SHEET 1 OF 1

APPROVED 13 FEB 1956 REVISED (A) 3 Aug 79