

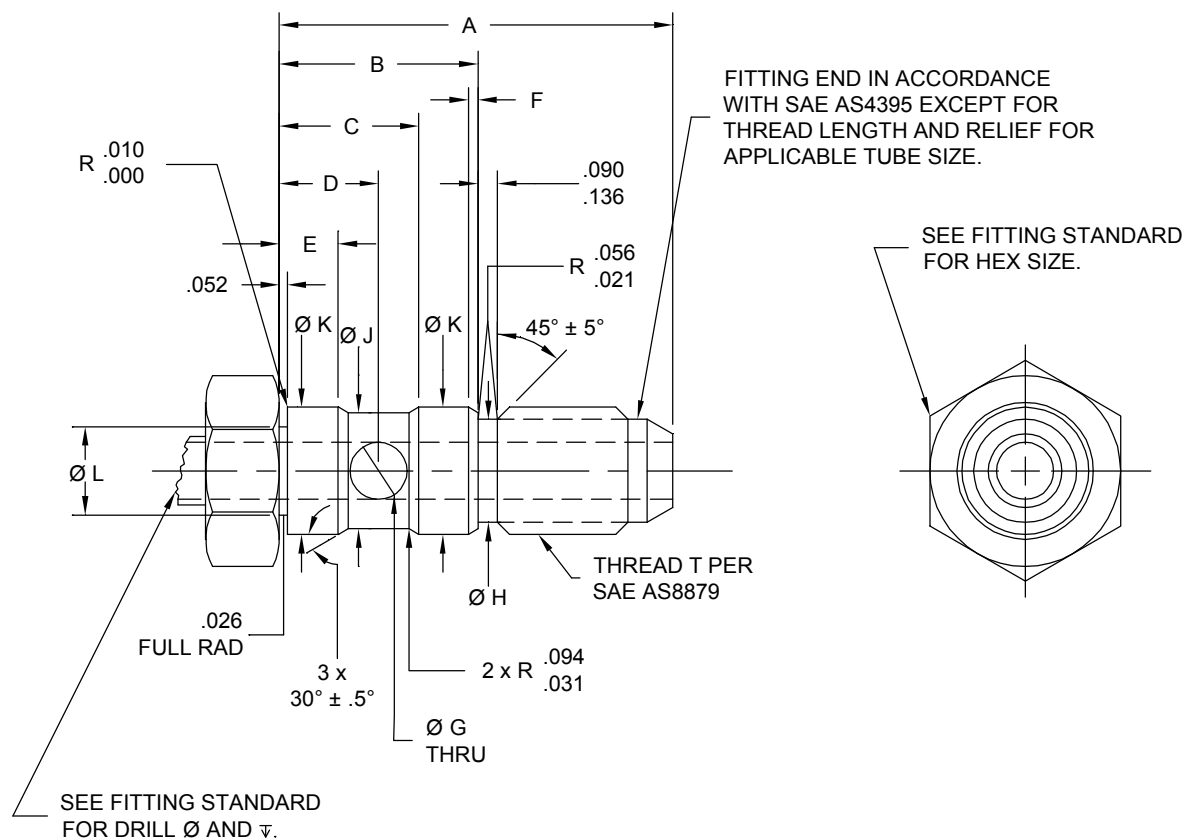
INCH-POUND

MS21947B
 10 November 1999
 SUPERSEDING
 MS21947A
 10 November 1984

DETAIL SPECIFICATION SHEET

FITTING END, BOLT CLUSTER FITTING
 SINGLE PORT THROUGH, FLARE

This specification is approved for use by all Departments and
 Agencies of the Department of Defense.

FIGURE 1. Fitting End.

MS21947B

TABLE I. Dimensions.

Size	Tube O.D.	Thread T (Ref)	A	B	C	D	E	F
Low Flow 4 <u>1/</u>	.250	.4375-20 UNJF-3A	2.072	1.087	.726	.540	.354	.060
High Flow 4	.250	.4375-20 UNJF-3A	2.353	1.274	.891	.634	.377	.065
High Flow 5	.313	.5000-20 UNJF-3A	2.353	1.274	.891	.634	.377	.065
High Flow 6	.375	.5625-18 UNJF-3A	2.359	1.274	.891	.634	.377	.065
High Flow 8	.500	.7500-16 UNJF-3A	2.460	1.274	.891	.634	.377	.065

TABLE I. Dimensions - Continued.

Size	G ±.003	H ±.005	J ±.005	K ±.0004	L
Low Flow 4 <u>1/</u>	.189	.364	.433	.4989	.425
High Flow 4	.300	.364	.740	.8114	.738
High Flow 5	.300	.427	.740	.8114	.738
High Flow 6	.300	.482	.740	.8114	.738
High Flow 8	.300	.660	.740	.8114	.738

1/ Dimensions for size 4 low flow fittings are constant for all low flow fittings.

REQUIREMENTS:

1. All outside machined surfaces shall be finished to 125 μ in R_a max. except as noted.
2. All inside machined surfaces shall be finished to 250 μ in R_a max. except as noted.
3. "K" machined surfaced shall be finished to 16 μ in R_a max. and concentric to each other within .0005 full indicator movement.
4. "J" and "K" diameters, and thread "T" shall be concentric within .005 full indicator movement.
5. Fittings shall be free from hanging burrs and slivers which might become dislodged under usage.

MS21947B

NOTES:

1. Dimensioning and tolerancing: ASME Y14.5
2. Dimensions are in inches. Unless otherwise specified, tolerances: Decimals $\pm.010$, Angles $\pm.5^\circ$.
3. This is a design standard and is not to be used for part numbers.

Custodians:

Army - AV
Navy - AS
Air Force - 99

Preparing activity:

DLA - CC

(Project 4730-1047)

Review activities:

Army -
Navy -
Air Force - 11, 82