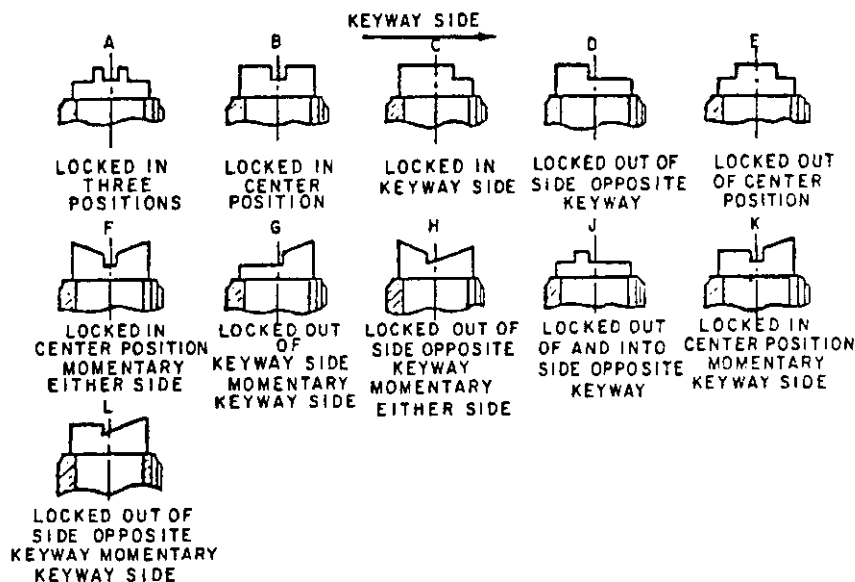
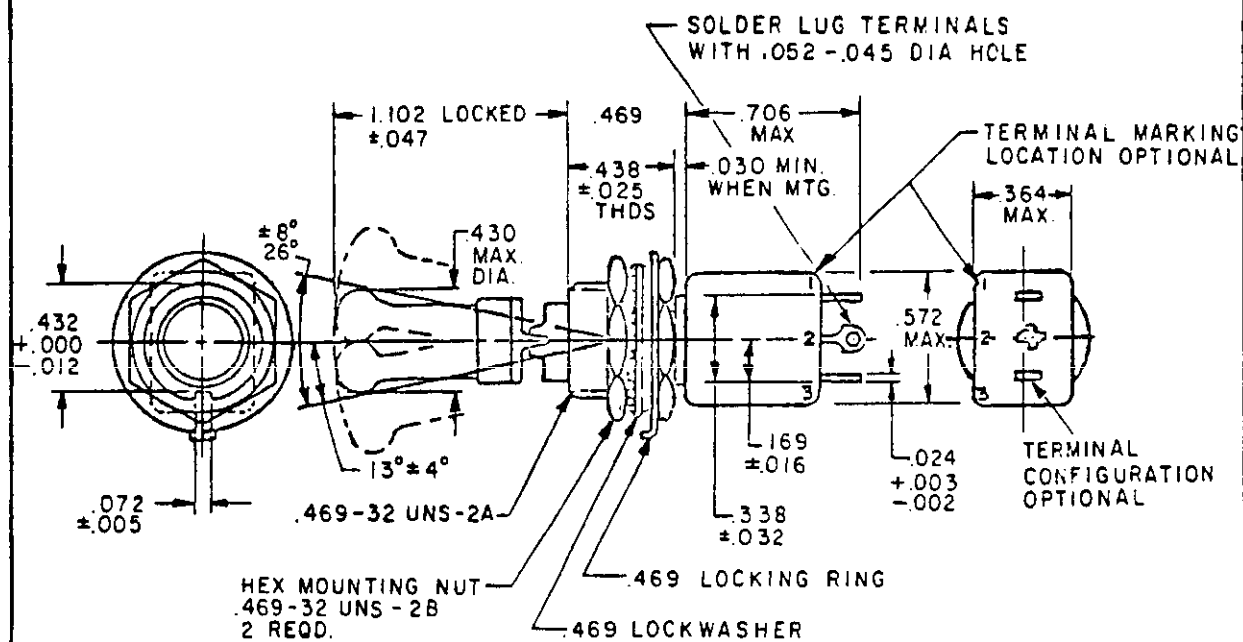


User activities: **MI**
Army
Navy
Air ForceReview activities: **AR, AV**
Army - **EC**
Navy
Air Force

11, 17, 99

This military standard is approved for use by all Departments and Agencies of the Department of Defense. Selection for all new engineering and design applications and for repetitive use shall be made from this document when applicable.



FIGURES A THRU L ILLUSTRATE THE LOCKING AND MOMENTARY CONFIGURATION AND NOT THE DETAIL CONSTRUCTION OF THE LOCKING DESIGN.

(B) denotes change

P.A AF - 85	International interest	TITLE SWITCH, TOGGLE, POSITIVE BREAK, LEVER LOCK, -MINIATURE, TOGGLE SEALED, SOLDER LUG, SINGLE POLE, .469 MOUNTING BUSHING	MILITARY STANDARD
Other Cust Army - ER Navy - AS	ASCCAS 12/16A		MS 21436
Procurement Specification MIL-S-8834	SUPERSEDES:		PAGE 1 OF 2

DD FORM 672

1 MAY 73

(Coordinated) PREVIOUS EDITIONS OF THIS FORM ARE OBSOLETE

5930-1275-

Distribution Statement A. Approved for public release; distribution is unlimited

APPROVED 1 MAR 1978
REVISED (A) 15 MAY 1980
(B) 18 OCT 1985

User activities
Army - MI
Navy -
Air Force -Review activities
Army - AR, AV
Navy - EC
Air Force -
11, 17, 99

This military standard is approved for use by all Departments and Agencies of the Department of Defense. Selection for all new engineering and design applications and for repetitive use shall be made from this document when applicable.

DETAIL REQUIREMENTS:

FED SUP CLASS
5930

MS DASH NO	LOCKING COMB	CIRCUIT MADE BETWEEN TERMINALS AS INDICATED WITH THE TOGGLE LEVER IN THESE POSITIONS: (a)			CURRENT CAPACITY IN AMPERES						LIFE LOW CURRENT LEVEL SWITCHING 5 mV
					RESISTIVE LOAD			INDUCTIVE LOAD			
					OPPOSITE KEYWAY SIDE (d)	CENTER POSITION	KEYWAY SIDE (d)	28 VOLTS DC	115 VOLTS		
					60 HERTZ AC	400 HERTZ AC		60 HERTZ AC	400 HERTZ AC		
-211	A,B,D	ON 2-3	OFF	ON 1-2	5	3	2	(b)	1	2	(c)
-221	C,E		NONE	OFF							
-231				ON 1-2							
-241	J,B		OFF	NONE							
-271	F,H	MOM-ON 2-3	OFF	MOM-ON 1-2	5	3	2	1	1	2	25 A
-281	K	NONE									
-311	G,K,L	ON 2-3									

- (a) Direction of movement of internal mechanism is opposite to the direction of the toggle movement.
 (b) With time constant of .020 \pm .002 (.51 mm \pm .05 mm) seconds.
 (c) Contact resistance not to exceed 50 ohms during life, low current level switching
 (d) Non-functional terminals shall not be supplied.

INCHES	MM	INCHES	MM	INCHES	MM	INCHES	MM	INCHES	MM
.002	.05	.016	.41	.045	1.14	.338	8.59	.469	11.91
.003	.08	.024	.61	.047	1.19	.364	9.25	.480	12.19
.005	.13	.025	.64	.052	1.32	.430	10.92	.572	14.53
.010	.25	.030	.76	.072	1.83	.432	10.97	.706	17.93
.012	.30	.032	.81	.169	4.29	.438	11.13	.983	24.97
								1.102	27.99

(B) NOTES:

- Dimensions are in inches.
- Metric equivalents are given for general information only.
- Unless otherwise specified, tolerances are \pm .010 (0.25 mm) on decimals and \pm .5° on angles.
- For hardware detail specifications see appendix of MIL-S-8834
- In the event of a conflict between the text of this standard and the references cited herein, the text of this standard shall take precedence
- Referenced Government documents of the issue listed in that issue of the Department of Defense Index of Specifications and Standards (DoDISS) specified in the solicitation form a part of this standard to the extent specified herein.
- Shock Method I and Method II (high impact). The switch shall be electrically and mechanically operative at the conclusion of the shock test except there can be mechanical transfer of the contact mechanism at all levels when tested in accordance with Method II (high impact).
- Toggle seal test. Method II
- Part number shall consist of MS number, locking combination letter and dash number
- Example part number
 MS21026B211 - Toggle sealed, on-off-on, locked in center position
 MS21026K281 - Toggle sealed, none-off-momentary on, locked in center position
- Strength of terminals 5 pounds normal to the mounting plane and 2 pounds in other planes
- Altitude 50,000 feet
- 115 V ac, 60 hertz electrical endurance tests are to be performed at room temperature and pressure
- Maximum weight: .0593 pound (26.9 grams).
- Unlocking force 4 \pm 1 pound
- Configuration of switch case housing, terminals and barriers Design optional providing maximum dimensions specified are not exceeded

P A AF - 85	International Interest	TITLE	MILITARY STANDARD
Other Cust Army - ER Navy - AS	ASCCAS 12/16A	SWITCH, TOGGLE, POSITIVE BREAK, LEVER LOCK, MINIATURE, TOGGLE SEALED, SOLDER LUG, SINGLE POLE, .469 MOUNTING BUSHING	MS21436
Procurement Specification MIL-S-8834	SUPERSEDES	PAGE 2 OF 2	