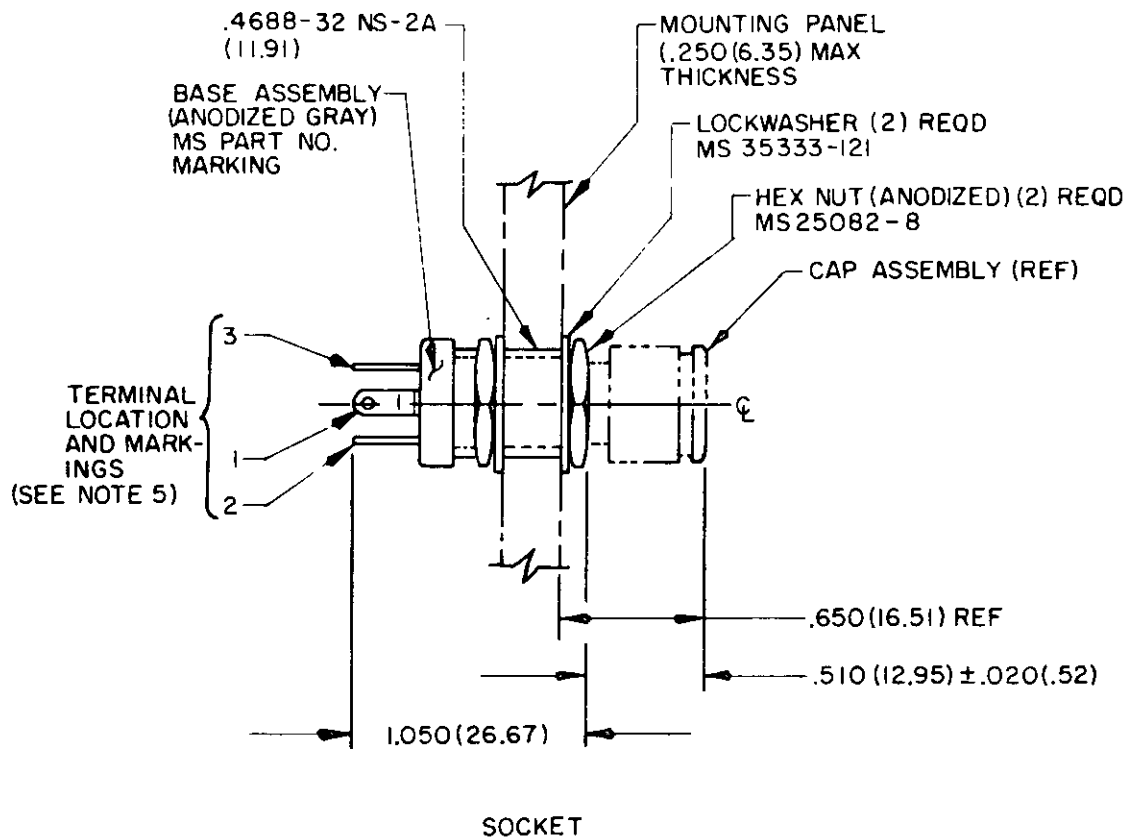


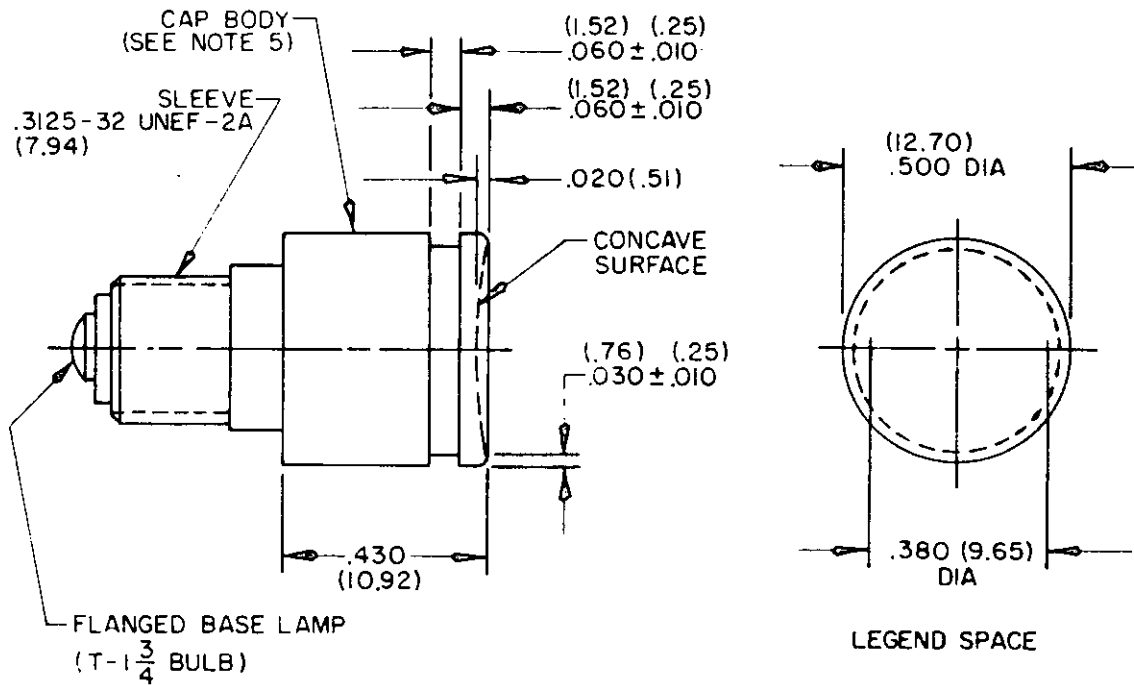
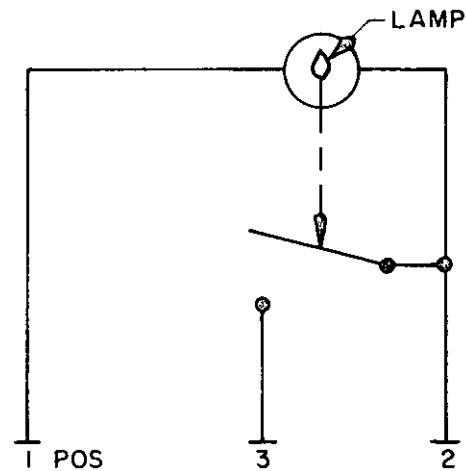
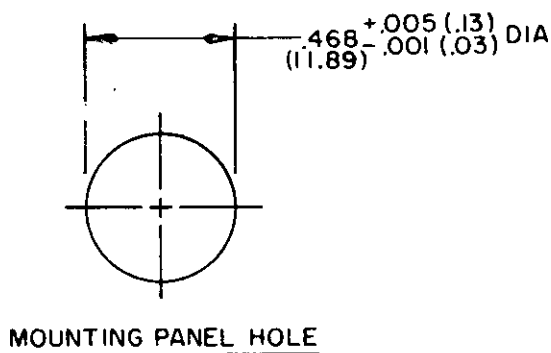
FED. SUP CLASS
6210

NOTES:

1. Dimensions are in inches.
2. Metric equivalents (to the nearest .01 mm) are given for general information only and are based upon 1 inch = 25.4 mm.
3. Metric equivalents are in parentheses.
4. The part number marked on the assembly shall be that of the complete assembly, less lamp. Example of part number: MS21414-1.
5. Material: Terminal, 1/2 hard brass per QQ-B-626, finished with gold flash per MIL-G-45204 type 11, Class 1 over silver plate per QQ-S-365 type 11. Cap, plastic (transparent). Sleeve, silver plate with heavy gold flash.
6. For design feature purposes, this standard takes precedence over procurement documents referenced herein.
7. Referenced documents shall be of the issue in effect on date of invitation for bid.

Ⓜ CANCELLED AS OF 21 JUNE 1982. NO SUPERSEDING DOCUMENT.

P.A. USAF-11	INTERNATIONAL INTEREST	TITLE LIGHT ASSEMBLY, PRESS TO TEST FOR (T-1 3/4 BULB)	MILITARY STANDARD
Other Cust:			MS 21414 (USAF)
Procurement Specifications MIL-L-7961	SUPERSEDES:		PAGE 1 OF 2

FED. SUP CLASS
6210CAP ASSEMBLYSCHEMATIC CIRCUIT DIAGRAM

APPROVED 25 FEB 74 REVISED A 21 JUN 82

P.A. USAF-11	INTERNATIONAL INTEREST	TITLE LIGHT ASSEMBLY, PRESS TO TEST FOR (T-1 $\frac{3}{4}$ BULB)	MILITARY STANDARD
Other Cust			MS 21414 (USAF)
Procurement Specifications MIL-L-7961	SUPERSEDES:		PAGE 2 OF 2