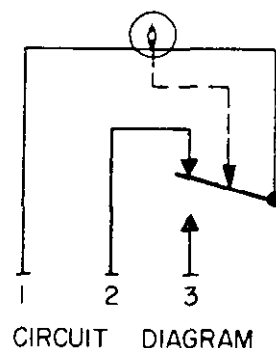
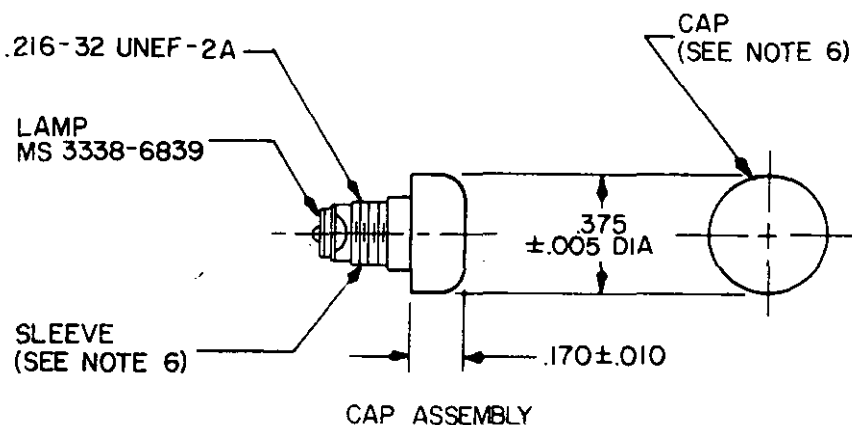
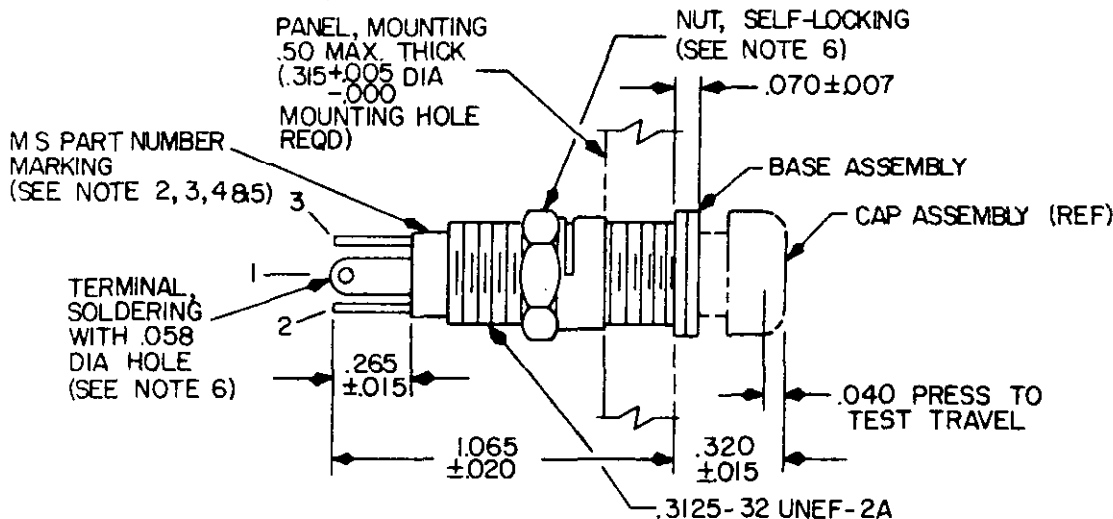


FED. SUP CLASS
6210

DASH NO.	LENS COLOR	LAMP REF	
		PART NO.	VOLTAGE
1	GREEN	MS3338-6839	28

NOTES:

1. Dimensions are in inches.
2. The part number marked on the assembly shall be that of the complete assembly, less lamp.
3. The part number for the assembly with lamp shall consist of the MS part number for the assembly with an additional dash number, which is the trade number of the lamp.
4. Example of part number: MS21395-1-6839.
5. The part number for the assembly with lamp shall be marked on the shipping container only.
6. Material: Nut, steel, cadmium plated.
Terminal, cadmium plated.
Cap, plastic (transparent).
Sleeve, tin plated.
7. For design feature purposes, this standard takes precedence over procurement documents referenced herein.
8. Referenced documents shall be of the issue in effect on date of invitations for bid.

(P) CANCELLED AS OF 21 JUNE 1982. NO SUPERSEDING DOCUMENT.

P.A. USAF-11	International Interest	TITLE LIGHT ASSEMBLY, PRESS TO TEST INDICATOR, MINIATURE	MILITARY STANDARD
Other Cust			MS 21395 (USAF)
Procurement Specification		SUPERSEDES:	SHEET 1 OF 1