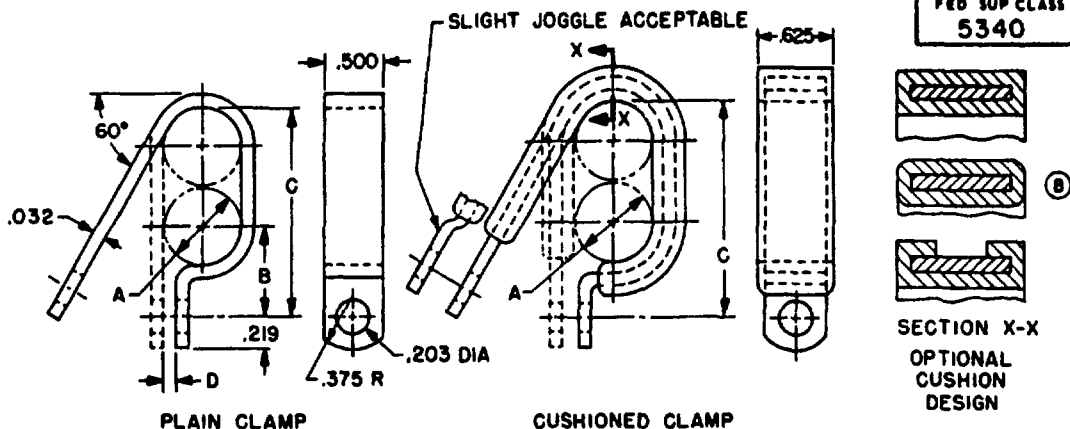


REVIEWER AV, IS, MI, MU
 DESER AS, AT, EL, CL, MC, OS, SH



PLAIN CLAMP

CUSHIONED CLAMP

SECTION X-X
 OPTIONAL
 CUSHION
 DESIGN

DASH NO.		A NOM DIA	B		C		D
PLAIN	CUSHIONED		PLAIN	CUSHIONED	PLAIN	CUSHIONED	
1	22	.125	.344	.406	.531	.494	.062
2	23	.188	.375	.438	.657	.719	
3	24	.250	.406	.469	.781	.844	
4	25	.312	.438	.500	.906	.969	
5	26	.375	.469	.531	1.031	1.094	
6	27	.438	.500	.562	1.157	1.219	
7	28	.500	.531	.594	1.281	1.344	
8	29	.562	.562	.625	1.404	1.469	
9	30	.625	.594	.656	1.531	1.594	
10	31	.688	.625	.688	1.657	1.719	
11	32	.750	.656	.719	1.781	1.844	.094
12	33	.875	.719	.781	2.031	2.094	
13	34	1.000	.781	.844	2.281	2.344	
14	35	1.125	.844	.906	2.531	2.594	
15	36	1.250	.906	.969	2.781	2.844	
16	37	1.375	.969	1.031	3.031	3.094	
17	38	1.500	1.031	1.094	3.281	3.344	
18	39	1.625	1.094	1.156	3.531	3.594	
19	40	1.750	1.156	1.219	3.781	3.844	
20	41	1.875	1.219	1.281	4.031	4.094	
21	42	2.000	1.281	1.344	4.281	4.344	

NOTES:

- MATERIAL.** Base - Steel, carbon in accordance with Fed. Std. No. 66, AISI 1005 thru AISI 1020. Temper half-hard, quarter-hard, skin-passed or dead-soft.
 (B) Cushion - Synthetic Rubber in accordance with MIL-R-3065, grade 5C515A1B1E3F2 or Plastisol in accordance with MIL-P-20689, 0.062 thick.
- PROTECTIVE COATING.** Steel - Cadmium plated in accordance with QQ-P-416, Type II, Class 3 or Zinc coated in accordance with QQ-Z-325, Type II, Class 3.
- DIMENSIONS AND TOLERANCES.** All dimensions are in inches, unless otherwise specified. Decimals ±.010; angles ±5°.
- PART NUMBER.** The MS part number consists of the MS number, plus the dash number.
 Example: MS21334-1
- Clamps shall be free of burrs and sharp edges, .010 R max.
- Referenced documents shall be of the issue in effect on date of invitations for bid.
- For design feature purposes, this standard takes precedence over procurement documents referenced herein.

P.A. WC Other Com YD 82	TITLE CLAMP, LOOP - DOUBLE, CABLE OR TUBE, STEEL, PLAIN AND CUSHIONED	MILITARY STANDARD	
		MS21334	
PROCUREMENT SPECIFICATION None	SUPERSEDES	SHEET 1 OF 1	

DD FORM 672-1 (Coordinated)

PREVIOUS EDITIONS OF THIS FORM ARE OBSOLETE

APPROVED 19 JAN 1961 REVISED (A) 10 MAR 1970 (B) 22 JUN 1972

This military standard is mandatory for use by all Departments and Agencies of the Department of Defense. Selection for all new engineering and design applications and for repetitive use shall be made from this document.