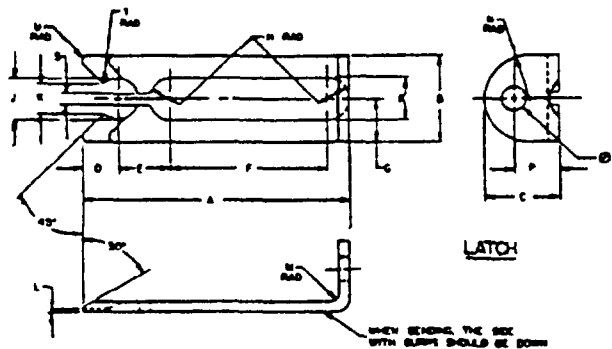
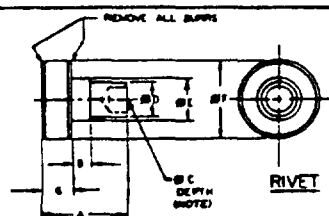


THE REQUIREMENTS FOR ACQUIRING THE PRODUCT(S) DESCRIBED HEREIN SHALL CONSIST OF THIS SPECIFICATION
 AND THE ISSUE OF THE FOLLOWING SPECIFICATION LISTED IN THAT ISSUE OF THE DOORS SP-70 IN
 THE STATION NONE

Form Approved
 OMB No. 0704-0188

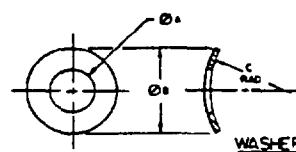


DASH NO	A	B	C	D	E	F	G	H RAD	J	K ± .005	L	M RAD	N RAD	P	Q Ø	R ± 1/64 -0	S	T RAD	U RAD
11	1-1/8	7/16	13/32	3/16	7/32	5/8	7/32	3/32	.187	.156	.020	1/32	7/32	1/4	.125	3/16	1/16	1/64	1/32
12	1-15/32	9/16	1/2	1/4	5/16	25/32	9/32	1/8	.250	.219	.030	3/32	9/32	5/16	.160	1/4	1/16	1/64	1/32
13	39/64	7/32	3/16	7/64	5/32	5/16	7/64	1/16	.125	.080	.015	1/32	7/64	3/8	.047	1/8	1/32	1/64	1/64



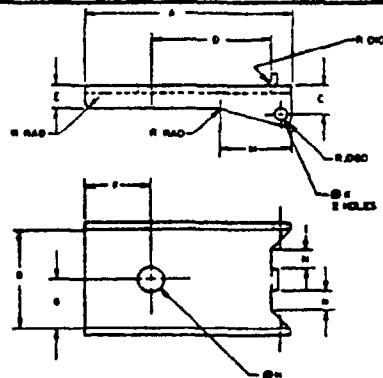
DASH NO	A ± .003	B	C Ø	D ± .000 - .002	E	F Ø	G DIM
31	.250	.075	.064	.125	.184	3/8	1/16
32	.300	.100	.147	.187	.220	3/8	1/16
33	.300	.100	.147	.187	.227	7/16	1/16
34	.300	.075	.064	.125	.184	3/8	1/16
35	.154	.045	.055	.078	.125	.213	1/32

NOTE: DIA "C" DEPTH - DASH 31 THRU 34 = .125
 - DASH 35 = .078



DASH NO	Ø A	Ø B	C RAD APPROX
41	.189	3/8	7/16
42	.228	3/8	7/16
43	.234	7/16	3/8
44	.130	.225	7/32

"B" DIA IS SIZE BEFORE FORMING



DASH NO	A	B	C	D	E	F	G	H ± .002 - .000	J	K ± .000 - .003	L	M	N
21	5/8	.444	1/8	.239	3/32	5/16	.234	.129	1/16	.125	.0635	1/16	5/16
22	11/16	.584	9/64	.395	7/64	11/32	.297	.189	1/16	.125	.0635	1/16	5/16
23	21/64	.250	1/16	.132	3/64	1/8	.125	.082	1/32	.047	.047	.030	13/64

INCH - POUND

PREPARING ACTIVITY AIR FORCE-82
 CUSTODIANS ARMY-GL NAVY-AS
 AIR FORCE-99 DLA-
 REVIEW 85
 USER
 PROJECT NUMBER 5325-0283

MILITARY SPECIFICATION SHEET
 TITLE
 FASTENER - SNAPSLIDE

SPECIFICATION SHEET NUMBER
MS21332B 26 Oct 90
 SUPERSEDING
 MS21332A 4 MAR 68 (SEE NOTE 6)
 AWS- N/A FSC - 5325

DISTRIBUTION STATEMENT

A. Approved for public release, distribution is unlimited

Page 1 of 2

THIS SPECIFICATION IS APPROVED FOR USE BY ALL DEPARTMENTS AND AGENCIES OF THE
 AIR FORCE

REQUIREMENTS:

1. MATERIAL LATCH, .050 FOR DASH 11, .078 FOR DASH 12, CORROSION RESISTANT STEEL FOR MIL-S-5059 .032 FOR DASH 13, PHOSPHOR BRONZE, SPRING TEMPER PER QQ-B-750
 LATCH GUIDE; DASHES 21 AND 22, .022 CORROSION RESISTANT STEEL PER MIL-S-5059, DASH 23, .016 BRASS PER QQ-B-613
 RIVET; DASHES 31-34; NICKEL-COPPER ALLOY, (MONEL AND R MONEL) PER QQ-N-281 DASHES 35-38; BRASS PER QQ-B-613.
 WASHER; DASHES 41-43, .010 PHOSPHOR BRONZE, SPRING TEMPER PER QQ-B-750 DASH 44, .008 PHOSPHOR BRONZE, SPRING TEMPER PER QQ-B-750
2. FINISH LATCH; TUMBLE TO A SMOOTH FINISH, THEN PASSIVATE PER QQ-P-35 (SEE NOTE 3).
 LATCH GUIDE, TUMBLE AND BALL BURNISH, THEN PASSIVATE PER QQ-P-35.
 RIVET; PASSIVATE PER QQ-P-35
 WASHER; NICKLE PLATE, PER QQ-N-290, TYPE V.
3. PART NUMBER

MS PART NO. COMPLETE SET	ONE EACH OF THE FOLLOWING DASH NUMBERS				INSTALLATION DRAWING MS21327
	LATCH	GUIDE	RIVET	WASHER	
MS21332-1	12	22	33	43	TYPL B
-2	12	22	32	42	
-3	11	21	34	41	TYPE A
-4	11	21	31	41	
-5	13	23	35	44	TYPE C

NOTES

1. ALL DIMENSIONS ARE IN INCHES.
2. UNLESS OTHERWISE SPECIFIED, TOLERANCES FRACTIONS $\pm 1/64$, DECIMALS $\pm .002$, ANGLES $\pm 2^\circ$
3. FINISH ALL OVER 125°
4. EACH COMPLETE SET TO BE PACKAGED OR FASTENED TOGETHER AND MARKED WITH MS PART NO FOR STOCKING PURPOSES
5. FOR STUDS TO BE USED, SEE DRAWINGS MS21323, MS21325, AND MS21326 AS APPLICABLE
6. MS21332 SUPERSEDES AN0195
7. IN THE EVENT OF A CONFLICT BETWEEN THE TEXT OF THIS STANDARD AND THE REFERENCES CITED HEREIN, THE TEXT OF THIS STANDARD SHALL TAKE PRECEDENCE.
8. REFERENCED GOVERNMENT (OR NON-GOVERNMENT) DOCUMENTS OF THE ISSUE LISTED IN THAT ISSUE OF THE DEPARTMENT OF DEFENSE INDEX OF SPECIFICATIONS AND STANDARDS (DODISS) SPECIFIED IN THE SOLICITATION FORM A PART OF THIS STANDARD TO THE EXTENT SPECIFIED HEREIN.

PREPARING ACTIVITY AIR FORCE-82
 CUSTODIANS ARMY-GL NAVY-AS
 AIR FORCE-99 DLA-
 REVIEW 85
 USER
 PROJECT NUMBER 5325-0283

MILITARY SPECIFICATION SHEET

TITLE

FASTENER - SNAPSLIDE

SPECIFICATION SHEET NUMBER

MS21332B

SUPERSEDING
MS21332A 4 MAR 68 (SEE NOTE 6)

AMSC- N/A FSC- 5325

DISTRIBUTION STATEMENT

A. Approved for public release distribution is unlimited

Page 2 of 2