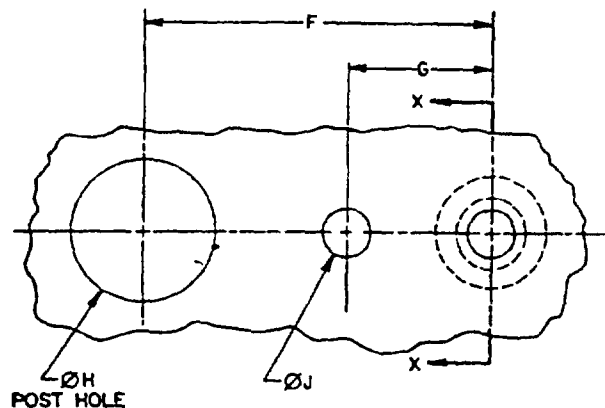


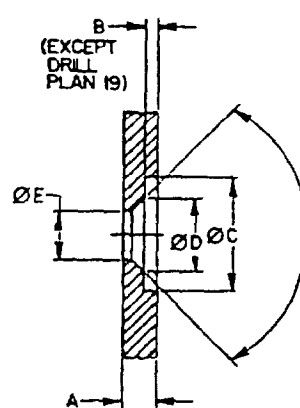
THE REQUIREMENTS FOR ACQUIRING THE PRODUCT(S) DESCRIBED HEREIN SHALL CONSIST OF THIS SPECIFICATION SHEET THE ISSUE OF THE FOLLOWING SPECIFICATION LISTED IN THAT ISSUE OF THE DODSS SPECIFICATION SHEET THE S ATOM NONE

APPROVED FOR USE BY ALL DEPARTMENTS AND AGENCIES OF THE

THIS SPECIFICATION DEPARTMENT OF DI



DRILLING PLAN



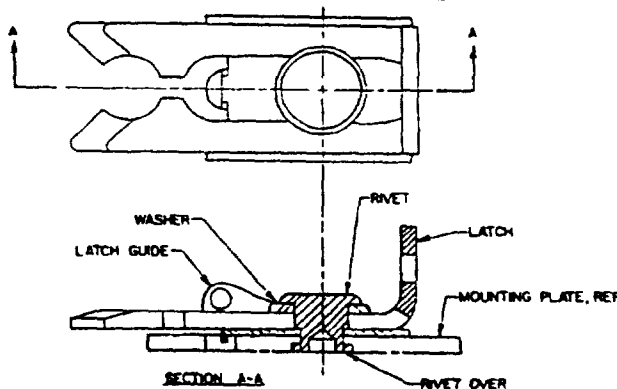
SECTION X-X

Form Approved
OMB No 0704-0188

DRILLING PLAN

DRILLING PLAN NO	A	B DEPTH	Ø C	Ø D	Ø E	F	G	Ø H	Ø J	K (DEG)
11	.040	.015	$\frac{1}{4}$.170	.129	.625	250	$\frac{21}{64}$	$\frac{1}{8}$	90
12	$\frac{1}{16}$.020								
13	$\frac{3}{32}$.030								
14	$\frac{1}{8}$.065								
15	$\frac{1}{16}$.020	$\frac{5}{16}$.235	.189	.875	406	$\frac{25}{64}$	$\frac{1}{8}$	90
16	$\frac{3}{32}$.030								
17	$\frac{1}{8}$.035								
18	$\frac{3}{16}$.090								
19	.060	$\frac{1}{2}$.082	.344	140	$\frac{13}{64}$	$\frac{1}{16}$	60
	.063									
	.067									
	.071									

$\frac{1}{2}$ Countersink 60° to depth 1/2 of plate thickness Counterbore not required.



INSTALLATION

INSTALLATION TYPE	DRILLING PLAN NO	STUD DRAWING NO
A	11, 12, 13, 14	MS21325, MS21326
B	15, 16, 17, 18	MS21326
C	19	

NOTES

1. DETAILS OF LATCH, LATCH GUIDE, RIVET AND WASHER ARE SHOWN BY DRAWING MS21322.
2. DETAILS OF STUD ARE SHOWN BY DRAWINGS MS21323, MS21325, MS21326.
3. MS21327 SUPERSEDES AND 10082
4. DRILLING PLAN HOLES MUST BE IN LINE
5. DIMENSIONS IN INCHES, UNLESS OTHERWISE SPECIFIED, TOLERANCES DECIMALS $\pm .003$, FRACTIONS ± 1 , ANGLES $\pm 2^\circ$.

CANCELLED AFTER 13 JUNE 1979 - NO SUPERSEDING DOCUMENT
REINSTITUTED 29 JUNE 1982

INCH - POUND

PREPARING ACTMITY AIR FORCE-82
CUSTODIANS ARMY-GL NAVY-AS
AIR FORCE-99 DLA-
REVIEW AS, GL
USER
PROJECT NUMBER 5325-0287

MILITARY SPECIFICATION SHEET
TITLE
FASTENER INSTALLATION-SNAPSLIDE

SPECIFICATION SHEET NUMBER
MS21327E 26 Oct 90
SUPERSEDING
MS21327D 29 JUN 82 (SEE NOTE 3)
AMSC- N/A FSC- 5325

DISTRIBUTION STATEMENT

A Approved for public release distribution is unlimited

Page 1 of 1