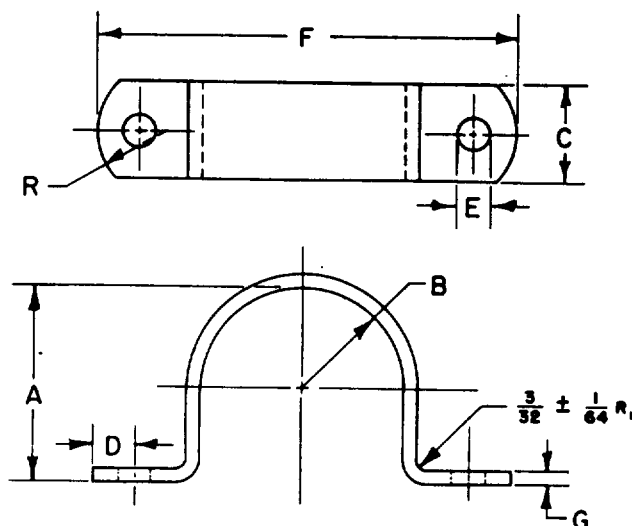


FED. SUP CLASS
5340REVIEWER: MU, IS, YD, 69, WC
USER: EL, MC

DASH NO.	PIPE OR CONDUIT SIZE	CABLE O.D.	A ±.010	B ±.010	C +.125 -.000	D ±.062	E +.031 -.016	F ±.125	G ±.015	R ±.125
1	1/8	13/32	.406	.203	.500	.219	.203	1.750	.048	.375
2	1/4	17/32	.540	.270						
3		9/16	.562	.281				2.000		
4		5/8	.625	.312						
5	3/8	11/16	.688	.344	.625	.375	.281	2.375	.063	.500
6		3/4	.750	.375	.688			2.500		
7	1/2	27/32	.844	.422				2.625		
8		1	1.000	.500				2.750		
9	3/4	1- 1/16	1.062	.531	.750			2.875	.080	.562
10		1- 1/8	1.125	.562				3.000		
11	1	1- 5/16	1.315	.657				3.125		
12		1- 1/2	1.500	.750	.875			3.375		
13	1-1/4	1-21/32	1.660	.830				3.625	.125	.625
14		1- 3/4	1.750	.875				3.750		
15	1-1/2	1-29/32	1.906	.953				4.000		
16	2	2- 3/8	2.375	1.187				5.500		
17	2-1/2	2- 7/8	2.875	1.437	1.000	.500	.344	6.000	.750	
18	3	3- 1/2	3.500	1.750				6.500		
19	3-1/2	4	4.000	2.000				7.000		

(A) MATERIAL: Steel, Carbon, sheet or strip in accordance with procurement specification.

(A) PROTECTIVE COATING: Cadmium plated, specification QQ-P-416, Class 1, Type II; zinc plated, specification QQ-Z-325, Class 2, Type II.

DIMENSIONS: All dimensions are in inches unless otherwise specified.

PART NUMBER: The MS part number consists of the MS number, plus the dash number. Example: MS21314-1.

- NOTES:**
- (1) For design feature purposes, this standard takes precedence over procurement documents referenced herein.
 - (2) Referenced document shall be of the issue in effect on date of invitations for bid.
 - (3) Strap shall be free of burrs and sharp edges, .010 radius maximum.
 - (4) Strap corresponds to Type II, Style A, pipe, conduit or cable, of the procurement specification.

(A) For changes see sheet 1.

P.A. WC Other Cust YD 69	TITLE STRAP, RETAINING, TWO HOLE, FOR PIPE, CONDUIT AND CABLE	MILITARY STANDARD
		MS 21314
PROCUREMENT SPECIFICATION (A) FF-S-760	SUPERSEDES: (A) BLAX1.1	SHEET 1 OF 1