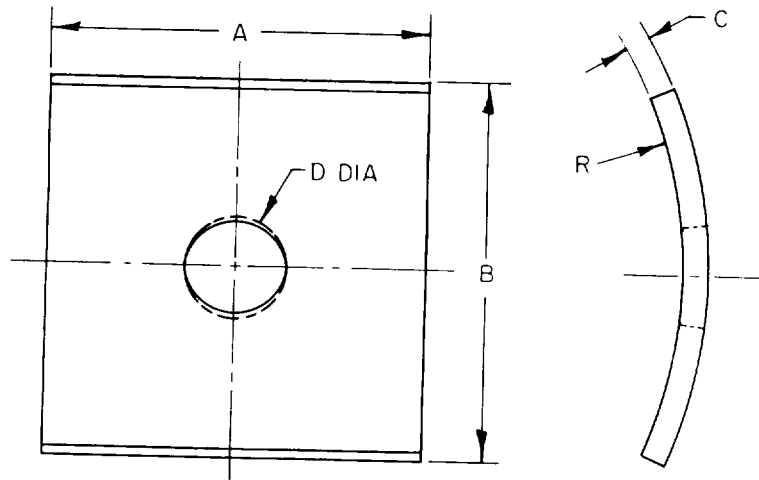


FED. SUP CLASS
5310

Reviewer/user information is current as of the date of this document. For future coordination of changes to this document, draft circulation should be based on information in current DDHSS (PSC listing).

ABCT: GL+ WC+ SL+ NAVY: MC@ SA+ YD@ SH+ AIR FORCE: 26@ 85+ 69+



DASH NO.	BOLT DIA.	A ± 1/8	B ± 1/8	C 1/32 1/16	D 1/16 0
-5	5/8	2-1/4	2-1/4	3/16	11/16
-6	5/8	2-1/2	2-1/2	3/16	11/16
-7	5/8	3	3	1/4	11/16
-8	5/8	3-1/2	3-1/2	1/4	11/16
-9	3/4	3	3	1/4	13/16
-10	3/4	3-1/4	3-1/4	1/4	13/16
-11	3/4	3-1/2	3-1/2	3/8	13/16
-12	3/4	3-1/2	3-1/2	3/8	13/16
-13	7/8	3-1/2	3-1/2	3/8	15/16
-14	7/8	4	4	1/4	15/16
-15	1	3	3	5/16	1-1/8
-16	1	3-1/2	3-1/2	3/8	1-1/8
-17	1	3-1/2	3-1/2	3/8	1-1/8
-18	1	4	4	3/8	1-1/8

~~MATERIALS:~~ CARBON STEEL, QQ S 636 (LOW CARBON GRADE); OR MALLEABLE IRON, QQ S 666

~~PROTECTIVE FINISH:~~ HOT DIP GALVANIZED; ASTM SPECIFICATION A153-53

NOTES:

- RADIUS "R" IS 4-1/2 INCHES (NOMINAL).
- CENTER OF HOLE "D" SHALL NOT DEVIATE FROM THE INTERSECTION OF THE WASHER CENTER LINES BY MORE THAN 1/16.
- MATERIAL, FINISH, TOLERANCING, AND WORKMANSHIP SHALL BE IN ACCORDANCE WITH EDISON ELECTRIC INSTITUTE SPECIFICATION TDJ-10, OF OCTOBER 1962.
- THE "MS" PART NUMBER CONSISTS OF THE MS PART NUMBER, PLUS THE DASH NUMBER, EXAMPLE: MS21308-6.

This military standard is approved by the Department of Defense and is mandatory on all activities. Selection for all new engineering and design applications and for repetitive use shall be made from this document.

ALL DIMENSIONS IN INCHES

P.A. EL Other Cust YD 82	TITLE WASHER, SADDLE SQUARE, CURVED (POLE LINE)	MILITARY STANDARD MS 21308
PROCUREMENT SPECIFICATION MIL-H-55053	SUPERSEDES:	SHEET 1 OF 1

DD FORM 672-1 (Coordinated)

PREVIOUS EDITIONS OF THIS FORM ARE OBSOLETE.

5310-0529

APPROVED 18 JULY 58 REVISED (A) 14 NOV 60 (B3) 10 AUGUST 1967 (C) 7 SEPTEMBER 1967