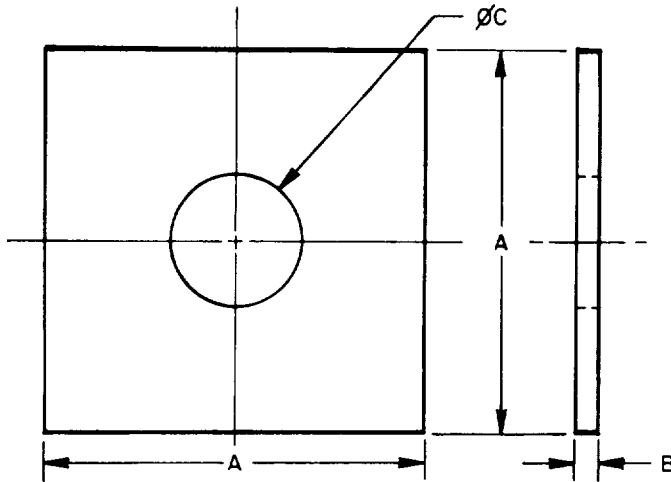


USER ACTIVITIES:
ARMY — MC
NAVY — MC

REVIEWER ACTIVITIES:
ARMY — AR
DLA — IS

DISTRIBUTION STATEMENT A. Approved for public release; distribution is unlimited.
This military standard is approved for use by all Departments and Agencies of the Department of Defense
Selection for all new engineering and design applications and for repetitive use shall be made from this
document when applicable.

AMSC N/A



FED SUP CLASS
5310

TABLE I. DASH NUMBERS AND DIMENSIONS.

DASH NUMBERS		BOLT SIZE (REF)	A	THICKNESS B		ØC	
CARBON STEEL	COPPER ALLOY			TOL	TOL	TOL	TOL
1	8	.625	2.00		.125	.688	
2	9	.625	2.25		.188	.688	
3	10	.625	2.25		.188	.813	
4	11	.750	3.00	+.125	.188	.813	+.063
5	12	.750	3.00		.250	.813	-.016
6	13	.750 AND .875	3.50		.375	.938	
7	14	1.0	4.00		.500	1.125	

REQUIREMENTS:

- MATERIAL.** STEEL, CARBON, GRADES 1010 THRU 1015 (UNS G10100 THRU UNS G10150) IN ACCORDANCE WITH ASTM A109, COLD ROLLED, NUMBER 4, TEMPER. COPPER ALLOY, 110 (UNS C11000) ELECTROLYTIC TIGHT PITCH, IN ACCORDANCE WITH QQ-C-576, COLD ROLLED, TEMPER, HARD.
- PROTECTIVE COATING AND SURFACE TREATMENT.** CARBON STEEL WASHERS SHALL BE HOT-DIP ZINC GALVANIZED IN ACCORDANCE WITH ASTM A153, CLASS C.
- PART NUMBER.** THE PART NUMBER SHALL CONSIST OF THE BASIC MS NUMBER FOLLOWED BY A DASH NUMBER FROM TABLE I.

EXAMPLE: MS21307-1

DASH NUMBER

BASIC MS NUMBER

MS21307-1 INDICATES - WASHER, FLAT (SQUARE), CARBON STEEL, .688 INCH ID; 2 INCH SQUARE; 125 INCH THICK, ZINC GALVANIZED.

NOTES:

- ALL DIMENSIONS ARE IN INCHES.
- IN THE EVENT OF A CONFLICT BETWEEN THE TEXT OF THIS STANDARD AND THE REFERENCES CITED HEREIN, THE TEXT OF THIS STANDARD SHALL TAKE PRECEDENCE.
- REFERENCED GOVERNMENT (OR NON-GOVERNMENT) DOCUMENTS OF THE ISSUE LISTED IN THAT ISSUE OF THE DEPARTMENT OF DEFENSE INDEX OF SPECIFICATIONS AND STANDARDS (DODISS) SPECIFIED IN THE SOLICITATION FORM A PART OF THIS STANDARD TO THE EXTENT SPECIFIED HEREIN.

P.A. ARMY-ER Other Cust	INTERNATIONAL INTEREST	TITLE WASHER, FLAT (SQUARE)	MILITARY STANDARD
NAVY - YD			MS21307
PROCUREMENT SPECIFICATION FF-W-92	SUPERSEDES	PAGE	OF

DD FORM 1672-1 (COORDINATED)

PREVIOUS EDITIONS OF THIS FORM ARE OBSOLETE

5310-1523

APPROVED 18 JUL 58
REVISED (A) 19 NOV 69 (B) 30 SEPT 87