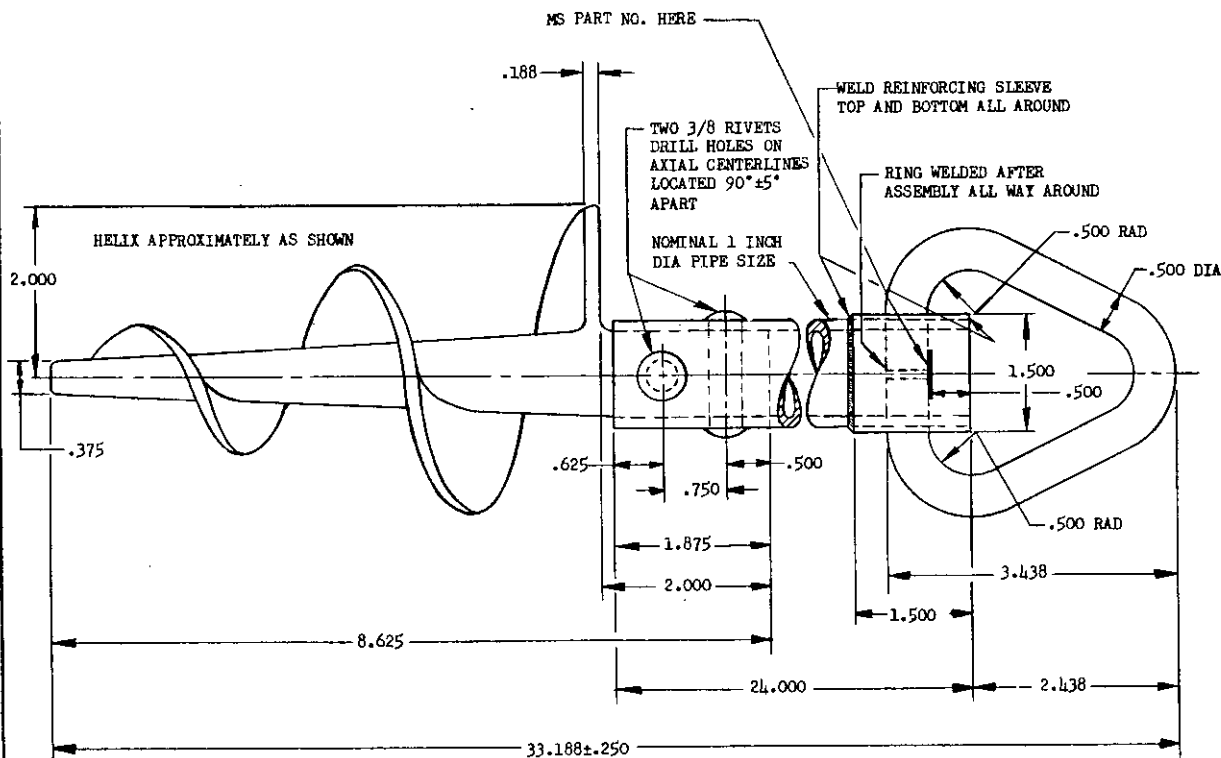


FED. SUP CLASS  
1730

DASH NO.
-1

ANCHOR SHALL WITHSTAND 3000 POUND PULL APPLIED THRU MOORING RING.

MATERIAL: AUGER POINT - MALLEABLE CAST IRON.  
PIPE - STANDARD COMMERCIAL STEEL.  
RING - COMMERCIAL COLD ROLLED STEEL.  
RIVET - STEEL, MS20613-12C24.

DO NOT USE BESSEMER STEEL FOR ANY PART OF THE ANCHOR ASSEMBLY.

FINISH: HOT DIP ZINC COATED (GALVANIZED) 2 OZ PER SQUARE FOOT MIN WEIGHT OF COATING. STRESS RELIEVE PIPE AND RING PRIOR TO COATING

FIT: THERE SHALL BE A SHRINK FIT BETWEEN AUGER SHANK AND PIPE.

DIMENSIONS IN INCHES. UNLESS OTHERWISE SPECIFIED, TOLERANCES: DECIMALS ± .062.

DESIGN TORQUE VALUE: 300 FOOT POUND.

FOR DESIGN FEATURE PURPOSES, THIS STANDARD TAKES PRECEDENCE OVER PROCUREMENT DOCUMENTS REFERENCED HEREIN.  
REFERENCED DOCUMENTS SHALL BE OF THE ISSUE IN EFFECT ON DATE OF INVITATIONS FOR BID.

P.A. USAF-AFSC Other Cust Navy-Mop Army-MO	TITLE  ANCHOR - SEMI-PERMANENT MOORING	MILITARY STANDARD
		MS21300
PROCUREMENT SPECIFICATION NONE	SUPERSEDES: AN8014	SHEET 1 OF 1