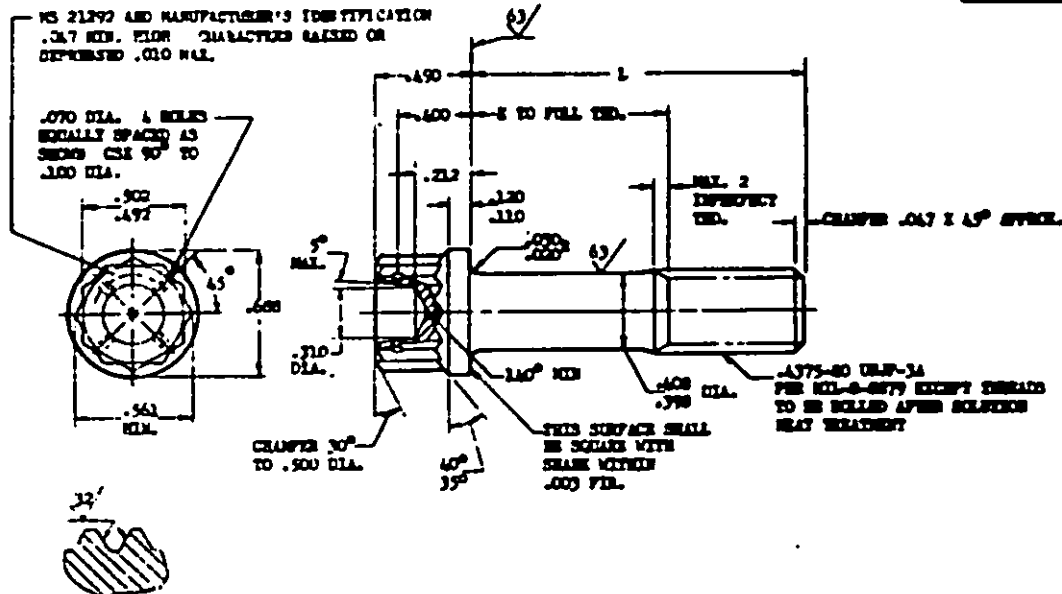


FED. SUP CLASS
2306

PART NO.	L	E +.000 -.060	APPROX. WEIGHT LB/100	PART NO.	L	E +.000 -.060	APPROX. WEIGHT LB/100	PART NO.	L	E +.000 -.060	APPROX. WEIGHT LB/100
MS21292-06	.812	(a)	5.51	MS21292-24	2.125	1.000	10.38	MS21292-43	4.750	3.625	20.12
MS21292-07	.875	(a)	5.74	MS21292-25	2.250	1.125	10.85	MS21292-46	4.875	3.750	20.99
MS21292-08	.938	(a)	5.97	MS21292-26	2.375	1.250	11.32	MS21292-47	5.000	3.875	21.05
MS21292-09	1.000	(a)	6.20	MS21292-27	2.500	1.375	11.79	MS21292-48	5.125	4.000	21.51
MS21292-10	1.062	(a)	6.43	MS21292-28	2.625	1.500	12.26	MS21292-49	5.250	4.125	21.97
MS21292-11	1.125	(a)	6.67	MS21292-29	2.750	1.625	12.72	MS21292-50	5.375	4.250	22.35
MS21292-12	1.188	(a)	6.90	MS21292-30	2.875	1.750	13.19	MS21292-51	5.500	4.375	22.80
MS21292-13	1.250	(a)	7.13	MS21292-31	3.000	1.875	13.66	MS21292-52	5.625	4.500	23.27
MS21292-14	1.312	(a)	7.36	MS21292-32	3.125	2.000	14.12	MS21292-53	5.750	4.625	23.74
MS21292-15	1.375	.250	7.59	MS21292-33	3.250	2.125	14.59	MS21292-54	5.875	4.750	24.21
MS21292-16	1.438	.312	7.82	MS21292-34	3.375	2.250	15.06	MS21292-55	6.000	4.875	24.67
MS21292-17	1.500	.375	8.05	MS21292-35	3.500	2.375	15.52				
MS21292-18	1.562	.438	8.27	MS21292-36	3.625	2.500	15.99				
MS21292-19	1.625	.500	8.50	MS21292-37	3.750	2.625	16.45				
MS21292-20	1.688	.562	8.73	MS21292-38	3.875	2.750	16.92				
MS21292-21	1.750	.625	8.96	MS21292-39	4.000	2.875	17.39				
MS21292-22	1.875	.750	9.43	MS21292-40	4.125	3.000	17.85				
MS21292-23	2.000	.875	9.90	MS21292-41	4.250	3.125	18.31				
				MS21292-42	4.375	3.250	18.75				
				MS21292-43	4.500	3.375	19.21				
				MS21292-44	4.625	3.500	19.66				

(a) THREAD TO HEAD. MAXIMUM TWO IMPERFECT THREADS. EXCEPT INCOMPLETE THREADS NOT TO ENTER FILLET RADIUS.

NOTE: (1) SHANK SHALL BE STRAIGHT WITHIN .0025 FTL. PER INCH OF BOLT LENGTH.
(2) THE CONCENTRICITY OF THREAD PD IN RELATION TO THE SHANK SHALL BE WITHIN .006 FTL.
(3) THE CONCENTRICITY OF THE SHANK IN RELATION TO THE WASHER FACE DIAMETER AND DOUBLE BEVELS OR SHALL BE WITHIN .019 FTL.

MATERIAL: CORROSION AND HEAT RESISTANT STEEL AND 5735
MANUFACTURING SPECIFICATION: AND 7478 EXCEPT HEADS TO BE FORGED BY HOT OR COLD UPSETTING.
PART SUBJECT TO FLOORING POINT INSPECTION PER AND 26A5.
SURFACE ROUGHNESS: MIL-STD-1C UNLESS OTHERWISE SPECIFIED; SURFACES TO BE 125 MICROINCHES.
WELLS SHARP EDGES .003-.015 UNLESS OTHERWISE SPECIFIED.
DIMENSIONS IN INCHES. UNLESS OTHERWISE SPECIFIED; TOLERANCES: LINEAR DIMENSIONS .010, ANGULAR DIMENSIONS 30°.
DO NOT USE UNASSIGNED PART NUMBERS.

This standard has been approved by the Navy (Department of the Navy) and the Department of the Army (DA) and is mandatory for use by all military activities. All other military activities are required to comply with this standard where indicated.

P.A. Navy - 44p Other Govt/Ar Force - ASD	TITLE BOLT, MACHINE - STEEL, MILLER DOUBLE BEVEL, EXTENDED WASHER, .375-20 (MIL-B-8879 THREAD) (D)	MILITARY STANDARD MS21292 (ASG)
PROCUREMENT SPECIFICATION NONE	SUPERSEDES.	SHEET 1 OF 1