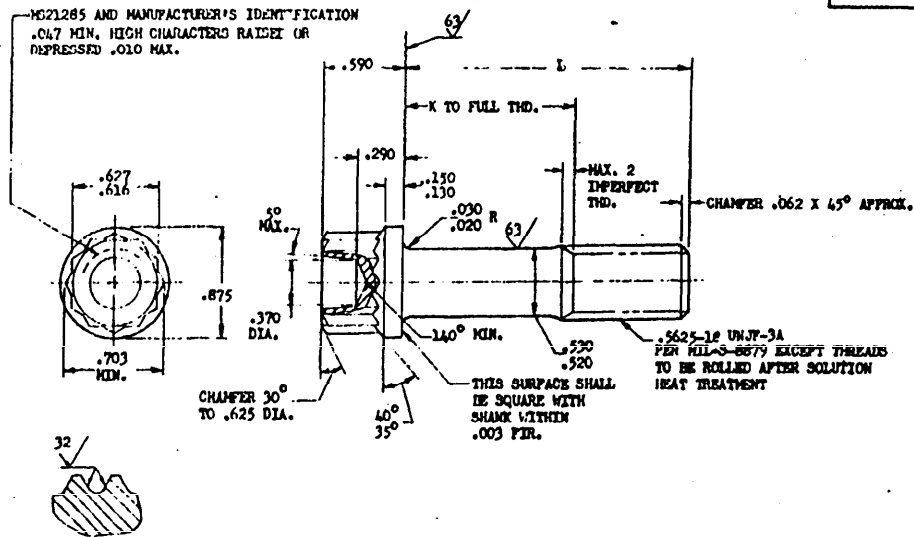


FED. SUP CLASS  
5306

SECTION THRU THREAD PROFILE

PART NO.	L	K +.000 -.040	APPROX. WEIGHT LB/100	PART NO.	L	K +.000 -.040	APPROX. WEIGHT LB/100	PART NO.	L	K +.000 -.040	APPROX. WEIGHT LB/100
MS21285-06	1.000	(a)	11.91	MS21285-23	2.375	1.000	19.63	MS21285-40	4.500	3.125	31.62
MS21285-07	1.062	(a)	12.26	MS21285-24	2.500	1.125	20.34	MS21285-41	4.625	3.250	32.32
MS21285-08	1.125	(a)	12.61	MS21285-25	2.625	1.250	21.04	MS21285-42	4.750	3.375	33.03
MS21285-09	1.188	(a)	12.96	MS21285-26	2.750	1.375	21.75	MS21285-43	4.875	3.500	33.73
MS21285-10	1.250	(a)	13.31	MS21285-27	2.875	1.500	22.45	MS21285-44	5.000	3.625	34.44
MS21285-11	1.312	(a)	13.66	MS21285-28	3.000	1.625	23.16	MS21285-45	5.125	3.750	35.14
MS21285-12	1.375	(a)	14.01	MS21285-29	3.125	1.750	23.86	MS21285-46	5.250	3.875	35.85
MS21285-13	1.438	(a)	14.36	MS21285-30	3.250	1.875	24.57	MS21285-47	5.375	4.000	36.55
MS21285-14	1.500	.125	14.71	MS21285-31	3.375	2.000	25.27	MS21285-48	5.500	4.125	37.26
MS21285-15	1.562	.188	15.06	MS21285-32	3.500	2.125	25.98	MS21285-49	5.625	4.250	37.96
MS21285-16	1.625	.250	15.41	MS21285-33	3.625	2.250	26.68	MS21285-50	5.750	4.375	38.67
MS21285-17	1.688	.312	15.76	MS21285-34	3.750	2.375	27.39	MS21285-51	5.875	4.500	39.37
MS21285-18	1.750	.375	16.11	MS21285-35	3.875	2.500	28.09	MS21285-52	6.000	4.625	40.08
MS21285-19	1.875	.500	16.81	MS21285-36	4.000	2.625	28.80				
MS21285-20	2.000	.625	17.51	MS21285-37	4.125	2.750	29.50				
MS21285-21	2.125	.750	18.21	MS21285-38	4.250	2.875	30.21				
MS21285-22	2.250	.875	18.93	MS21285-39	4.375	3.000	30.91				

(a) THREAD TO HEAD. MAXIMUM TWO IMPERFECT THREADS. EXCEPT INCOMPLETE THREADS NOT TO ENTER FILLET RADIUS.

- NOTE: (1) SHANK SHALL BE STRAIGHT WITHIN .002 FIR. PER INCH OF BOLT LENGTH.  
 (2) THE CONCENTRICITY OF THREAD PD IN RELATION TO THE SHANK SHALL BE WITHIN .006 FIR.  
 (3) THE CONCENTRICITY OF THE SHANK IN RELATION TO THE WASHER FACE DIAMETER AND DOUBLE HEXAGON O.D. SHALL BE WITHIN .026 FIR.

MATERIAL: CORROSION AND HEAT RESISTANT STEEL AMS 5735  
 MANUFACTURING SPECIFICATION: AMS 7478 EXCEPT HEADS TO BE FORMED BY HOT OR COLD UPSETTING.  
 PART SUBJECT TO FLUORESCENT PENETRANT INSPECTION PER AMS 2645.  
 SURFACE ROUGHNESS: MIL-STD-10 UNLESS OTHERWISE SPECIFIED, SURFACES TO BE 125 MICROINCHES.  
 BREAK SHARP EDGES .003-.015 UNLESS OTHERWISE SPECIFIED.  
 DIMENSIONS IN INCHES. UNLESS OTHERWISE SPECIFIED; TOLERANCES: LINEAR DIMENSIONS  $\pm .010$ , ANGULAR DIMENSIONS  $\pm 5^\circ$ .  
 DO NOT USE UNASSIGNED PART NUMBERS.

This standard has been approved by the Subj. Department of the Navy, and the Department of the USAF, and is mandatory for use by their activity. All other military activities are required to employ this standard where suitable.

P.A. Navy - Men  
 Other Cust Air Force - ASD

## TITLE

BOLT, MACHINE - STEEL, DOUBLE HEXAGON, EXTENDED WASHER, .5625-1:  
 (MIL-S-8879 INCLAD)

MILITARY STANDARD

MS21285 (ASG)

PROCUREMENT SPECIFICATION  
 NONE

SUPERSEDES:

SHEET 1 OF 1

DD FORM 672-1 (Limited coordination)

APPROVED 1 May 51 REVISED 13 Oct 51 (B) 17 Sep 63