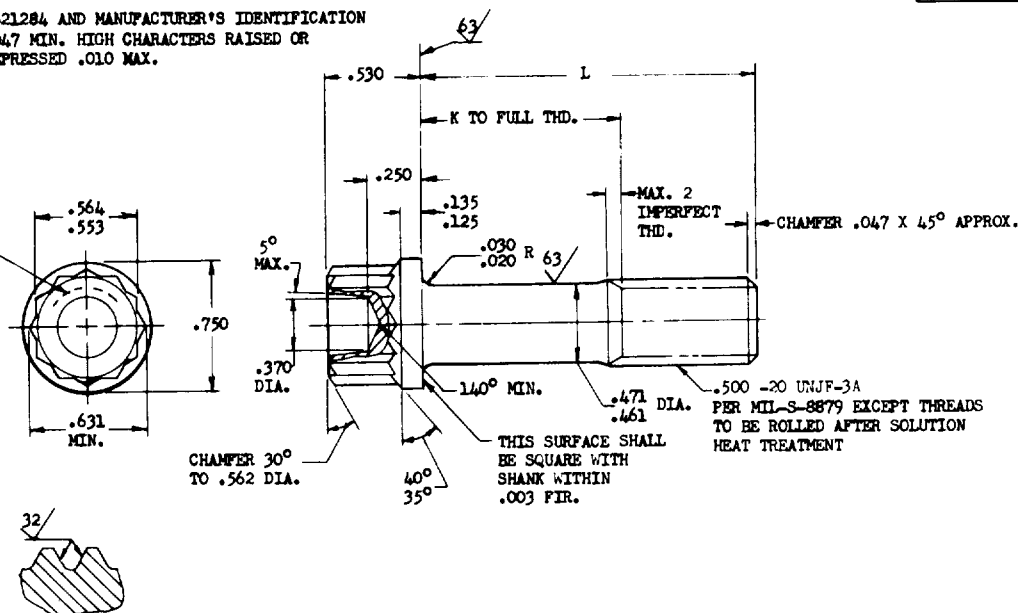


FED. SUP CLASS

5306

MS21284 AND MANUFACTURER'S IDENTIFICATION
 .047 MIN. HIGH CHARACTERS RAISED OR
 DEPRESSED .010 MAX.



SECTION THRU THREAD PROFILE

PART NO.	L	K	APPROX. WEIGHT LB/100	PART NO.	L	K	APPROX. WEIGHT LB/100	PART NO.	L	K	APPROX. WEIGHT LB/100
		+.000 -.060				+.000 -.060				+.000 -.060	
MS21284-06	.938	(a)	8.41	MS21284-21	2.000	.750	13.41	MS21284-39	4.250	3.000	24.29
MS21284-07	1.000	(a)	8.70	MS21284-22	2.125	.875	14.00	MS21284-40	4.375	3.125	24.89
MS21284-08	1.062	(a)	8.99	MS21284-23	2.250	1.000	14.61	MS21284-41	4.500	3.250	25.50
MS21284-09	1.125	(a)	9.28	MS21284-24	2.375	1.125	15.21	MS21284-42	4.625	3.375	26.11
MS21284-10	1.188	(a)	9.57	MS21284-25	2.500	1.250	15.82	MS21284-43	4.750	3.500	26.71
MS21284-11	1.250	(a)	9.86	MS21284-26	2.625	1.375	16.42	MS21284-44	4.875	3.625	27.32
MS21284-12	1.312	(a)	10.15	MS21284-27	2.750	1.500	17.01	MS21284-45	5.000	3.750	27.92
MS21284-13	1.375	.125	10.45	MS21284-28	2.875	1.625	17.61	MS21284-46	5.125	3.875	28.53
MS21284-14	1.438	.188	10.74	MS21284-29	3.000	1.750	18.22	MS21284-47	5.250	4.000	29.13
MS21284-15	1.500	.250	11.04	MS21284-30	3.125	1.875	18.83	MS21284-48	5.375	4.125	29.74
MS21284-16	1.562	.312	11.33	MS21284-31	3.250	2.000	19.43	MS21284-49	5.500	4.250	30.35
MS21284-17	1.625	.375	11.63	MS21284-32	3.375	2.125	20.04	MS21284-50	5.625	4.375	30.95
MS21284-18	1.688	.438	11.92	MS21284-33	3.500	2.250	20.65	MS21284-51	5.750	4.500	31.56
MS21284-19	1.750	.500	12.22	MS21284-34	3.625	2.375	21.26	MS21284-52	5.875	4.625	32.16
MS21284-20	1.875	.625	12.81	MS21284-35	3.750	2.500	21.86	MS21284-53	6.000	4.750	32.77
				MS21284-36	3.875	2.625	22.47				
				MS21284-37	4.000	2.750	23.07				
				MS21284-38	4.125	2.875	23.68				

(a) THREAD TO HEAD. MAXIMUM TWO IMPERFECT THREADS. EXCEPT INCOMPLETE THREADS NOT TO ENTER FILLET RADIUS.

NOTE: (1) SHANK SHALL BE STRAIGHT WITHIN .002 FIR. PER INCH OF BOLT LENGTH.
 (2) THE CONCENTRICITY OF THREAD PD IN RELATION TO THE SHANK SHALL BE WITHIN .006 FIR.
 (3) THE CONCENTRICITY OF THE SHANK IN RELATION TO THE WASHER FACE DIAMETER AND DOUBLE HEXAGON O.D. SHALL BE WITHIN .023 FIR.

MATERIAL: CORROSION AND HEAT RESISTANT STEEL AMS 5735
 MANUFACTURING SPECIFICATION: AMS 7476 EXCEPT HEADS TO BE FORMED BY HOT OR COLD UPSETTING.
 PART SUBJECT TO FLUORESCENT PENETRANT INSPECTION PER AMS 2645.
 SURFACE ROUGHNESS: MIL-STD-1C UNLESS OTHERWISE SPECIFIED, SURFACES 125 MICROINCHES.
 BREAK SHARP EDGES .003-.015 UNLESS OTHERWISE SPECIFIED.
 DIMENSIONS IN INCHES. UNLESS OTHERWISE SPECIFIED: TOLERANCES: LINEAR DIMENSIONS $\pm .010$, ANGULAR DIMENSIONS $\pm 5^\circ$.
 DO NOT USE UNASSIGNED PART NUMBERS.

APPROVED 1 MAY 1963 REVISED 3 OCT 62 17 MAY 63

P.A. Navy - Wep	TITLE	MILITARY STANDARD
Other Cust Air Force - ASD	BOLT, MACHINE - STEEL, DOUBLE HEXAGON, EXTENDED WASHER, .500-20 (MIL-S-8879 THREAD)	MS21284 (ASG)
PROCUREMENT SPECIFICATION NONE	SUPERSEDES:	SHEET 1 OF 1