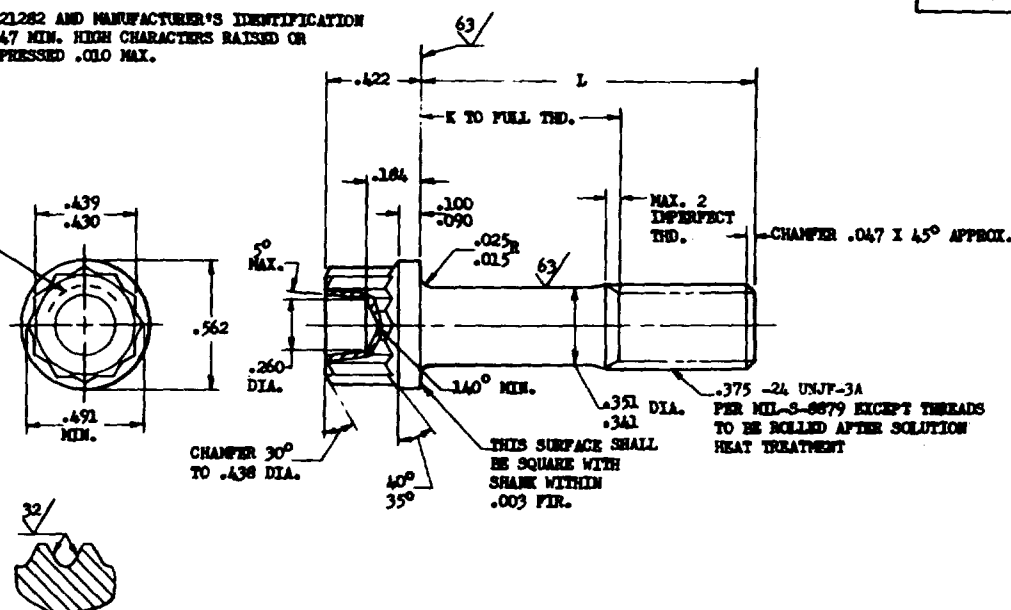


FED. SUP CLASS
5306MS21282 AND MANUFACTURER'S IDENTIFICATION
.047 MIN. HIGH CHARACTERS RAISED OR
DEPRESSED .010 MAX.

SECTION THRU THREAD PROFILE

PART NO.	L	K +.000 -.060	APPROX. WEIGHT LB/100	PART NO.	L	K +.000 -.060	APPROX. WEIGHT LB/100	PART NO.	L	K +.000 -.060	APPROX. WEIGHT LB/100
MS21282-06	.750	(a)	3.74	MS21282-22	1.750	.750	6.44	MS21282-40	4.000	3.000	12.47
MS21282-07	.812	(a)	3.90	MS21282-23	1.875	.875	6.77	MS21282-41	4.125	3.125	12.80
MS21282-08	.875	(a)	4.07	MS21282-24	2.000	1.000	7.11	MS21282-42	4.250	3.250	13.13
MS21282-09	.938	(a)	4.24	MS21282-25	2.125	1.125	7.44	MS21282-43	4.375	3.375	13.46
MS21282-10	1.000	(a)	4.41	MS21282-26	2.250	1.250	7.78	MS21282-44	4.500	3.500	13.89
MS21282-11	1.062	(a)	4.58	MS21282-27	2.375	1.375	8.11	MS21282-45	4.625	3.625	14.23
MS21282-12	1.125	.125	4.75	MS21282-28	2.500	1.500	8.44	MS21282-46	4.750	3.750	14.56
MS21282-13	1.188	.188	4.91	MS21282-29	2.625	1.625	8.78	MS21282-47	4.875	3.875	14.89
MS21282-14	1.250	.250	5.08	MS21282-30	2.750	1.750	9.12	MS21282-48	5.000	4.000	15.23
MS21282-15	1.312	.312	5.25	MS21282-31	2.875	1.875	9.46	MS21282-49	5.125	4.125	15.57
MS21282-16	1.375	.375	5.43	MS21282-32	3.000	2.000	9.80	MS21282-50	5.250	4.250	15.90
MS21282-17	1.438	.438	5.60	MS21282-33	3.125	2.125	10.13	MS21282-51	5.375	4.375	16.23
MS21282-18	1.500	.500	5.76	MS21282-34	3.250	2.250	10.47	MS21282-52	5.500	4.500	16.56
MS21282-19	1.562	.562	5.93	MS21282-35	3.375	2.375	10.80	MS21282-53	5.625	4.625	16.89
MS21282-20	1.625	.625	6.10	MS21282-36	3.500	2.500	11.14	MS21282-54	5.750	4.750	17.23
MS21282-21	1.688	.688	6.27	MS21282-37	3.625	2.625	11.47	MS21282-55	5.875	4.875	17.57
				MS21282-38	3.750	2.750	11.80	MS21282-56	6.000	5.000	17.91
				MS21282-39	3.875	2.875	12.14				

(a) THREAD TO HEAD. MAXIMUM TWO IMPERFECT THREADS. EXCEPT INCOMPLETE THREADS NOT TO ENTER FILLET RADIUS.

- NOTE: (1) SHANK SHALL BE STRAIGHT WITHIN .0025 FIR. PER INCH OF BOLT LENGTH.
 (2) THE CONCENTRICITY OF THREAD PD IN RELATION TO THE SHANK SHALL BE WITHIN .006 FIR.
 (3) THE CONCENTRICITY OF THE SHANK IN RELATION TO THE WASHER FACE DIAMETER AND DOUBLE HEXAGON O.D. SHALL BE WITHIN .017 FIR.

MATERIAL: CORROSION AND HEAT RESISTANT STEEL AMS 5735

MANUFACTURING SPECIFICATION: AMS 7476 EXCEPT HEADS TO BE FORMED BY HOT OR COLD UPSETTING.

PART SUBJECT TO FLUORESCENT PESTICIDE INSPECTION PER AMS 2645.

SURFACE ROUGHNESS: MIL-STD-10 UNLESS OTHERWISE SPECIFIED, SURFACES TO BE 125 MICROINCHES.

BREAK SHARP EDGES .003-.015 UNLESS OTHERWISE SPECIFIED.

DIMENSIONS IN INCHES. UNLESS OTHERWISE SPECIFIED: TOLERANCES; LINEAR DIMENSIONS $\pm .010$, ANGULAR DIMENSIONS $\pm 5^\circ$

DO NOT USE UNASSIGNED PART NUMBERS.

This standard was approved by the Bureau (Department of the Navy) and the Department of the USAF, and is mandatory for use by their activity. All other military activities are required to employ this standard where suitable.

P.A. Navy - Wep	TITLE	MILITARY STANDARD
Other Cust Air Force - ASD	BOLT, MACHINE - STEEL, DOUBLE HEXAGON, EXTENDED WASHER, .375-24 (MIL-S-8879 THREAD)	MS21282 (ASG)
PROCUREMENT SPECIFICATION	SUPERSEDES:	SHEET 1 OF 1
None		

DD FORM 672-1 (Limited coordination)

PREVIOUS EDITIONS OF THIS FORM ARE OBSOLETE.

APPROVED 1 May 61 REVISED A 23 Oct 61 B 17 Sep 63