

INCH-POUND

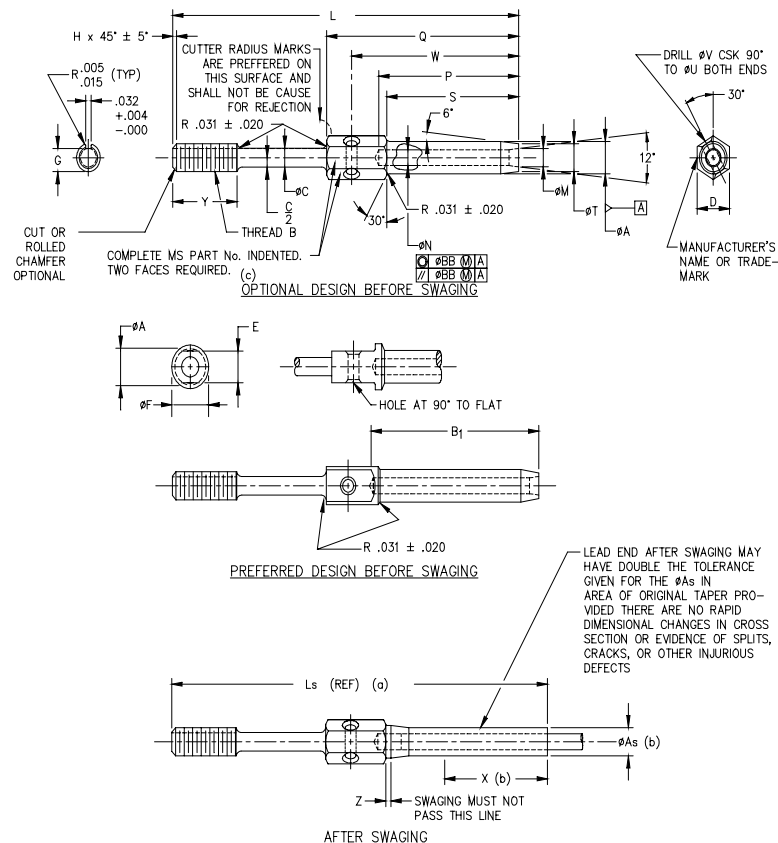
MS21260L
 10 January 2001
 SUPERSEDING
 MS21260K
 30 October 1999

MILITARY SPECIFICATION SHEET

TERMINAL, WIRE ROPE, SWAGING STUD

This specification is approved for use by all Departments and Agencies of the Department of Defense.

The requirements for acquiring the product described herein shall consist of this specification sheet and the issue of the following specification listed in that issue of the Department of Defense Index of Specifications and Standards (DoDISS) specified in the solicitation: MIL-DTL-781, QPL-781.



- NOTES: (a) Reference dimensions are for design purposes only and are not an inspection requirement.
 (b) Swaged terminals shall conform to 'ØAs' for length X.
 (c) For terminal sizes -2 through -5, use basic part number only, example: MS21260.

FIGURE 1. Terminal, wire rope, swaging stud.

AMSC N/A

1 of 4

FSC 1560

DISTRIBUTION STATEMENT A. Approved for public release; distribution is unlimited.

MS21260L

TABLE I. Part numbers and dimensions.

MS part number		Wire rope diameter		Minimum breaking strength lb 1/	Thread B UN-3A UNF-3A	ØA		ØAs	
Corrosion resistant steel		Nominal reference	Minimum			ØA	ØAs		
RH thread	LH thread								
MS21260L2RH	MS21260L2LH	1/16	.062	480	.1380 (# 6)-40	.160	+ .000 - .005	.138	+ .000 - .005
MS21260S2RH	MS21260S2LH								
MS21260L3RH	MS21260L3LH	3/32	.093	920	.1900 (#10)-32	.218		.190	
MS21260S3RH	MS21260S3LH								
MS21260L4RH	MS21260L4LH	1/8	.125	2000	.2500 (1/4)-28	.250		.219	
MS21260S4RH	MS21260S4LH								
MS21260L5RH	MS21260L5LH	5/32	.156	2800		.297		.250	
MS21260S5RH	MS21260S5LH								
MS21260L6RH	MS21260L6LH	3/16	.187	4200	.3125 (5/16)-24	.359		.313	
MS21260S6RH	MS21260S6LH								
MS21260-7RH	MS21260-7LH	7/32	.218	5600	.3750 (3/8)-24	.427		.375	+ .000 - .007
MS21260-8RH	MS21260-8LH	1/4	.250	7000		.494			
MS21260-9RH	MS21260-9LH	9/32	.281	8000	.4375 (7/16)-20	.563		.500	+ .000 - .008
MS21260-10RH	MS21260-10LH	5/16	.312	9800	.5000 (1/2)-20	.635		.563	
MS21260-12RH	MS21260-12LH	3/8	.375	14400	.5625 (9/16)-18	.703		.625	
MS21260-14RH	MS21260-14LH	7/16	.437	17600	.6250 (5/8)-18	.781		.688	
MS21260-16RH	MS21260-16LH	1/2	.500	22800	.6250 (5/8)-18	.844		.750	+ .000
MS21260-18RH	MS21260-18LH	9/16	.562	28500	.7500 (3/4)-16	.984		.875	- .009
MS21260-20RH	MS21260-20LH	5/8	.625	35000	.8750 (7/8)-14	1.109		1.000	+ .000 - .010
MS21260-24RH	MS21260-24LH	3/4	.750	49600	1.0000 (1)-12	1.359		1.250	+ .000 - .012
MS21260-28RH	MS21260-28LH	7/8	.875	66500	1.1250 (1 1/8)-12	1.593	1.437		
MS21260-32RH	MS21260-32LH	1	1.000	85400	1.2500 (1 1/4)-12	1.812	1.625		

1/ To achieve the minimum breaking strength, for the terminal test only, a galvanized carbon steel wire rope shall be used.

TABLE I. Part numbers and dimensions - Continued.

MS part number		B ₁		ØC +.006 -.000	D	E +.000 -.010	ØF	G		H			
Corrosion resistant steel								Maximum	Minimum	Maximum	Minimum		
RH thread	RH thread												
MS21260L2RH	MS21260L2LH	1.042	±.063	.092	.188	.156	.188.	.1139	.1094	.031	.015		
MS21260S2RH	MS21260S2LH												
MS21260L3RH	MS21260L3LH	1.261		.133	.250	.187	.250	.1638	.1568			.047	
MS21260S3RH	MS21260S3LH												
MS21260L4RH	MS21260L4LH	1.511											
MS21260S4RH	MS21260S4LH												
MS21260L5RH	MS21260L5LH	1.761		.195	.313	.250	.313	.2224	.2152				
MS21260S5RH	MS21260S5LH												
MS21260L6RH	MS21260L6LH	2.011											
MS21260S6RH	MS21260S6LH			.245	.375	.312	.375	.2830	.2754				
MS21260-7RH	MS21260-7LH	2.261											
MS21260-8RH	MS21260-8LH	2.511		.306	.438	.375	.438	.3454	.3378				
MS21260-9RH	MS21260-9LH	2.761			.500	.438	.500						
MS21260-10RH	MS21260-10LH	3.011		.361	.625	.563	.625	.4052	.4072				
MS21260-12RH	MS21260-12LH	3.511		.406	.688	.625	.688	.4678	.4597				
MS21260-14RH	MS21260-14LH	4.011		.476	.750	.688	.750	.5285	.5201		.063	.031	
MS21260-16RH	MS21260-16LH	4.698		.538	.812	.750	.812	.5909	.5826				
MS21260-18RH	MS21260-18LH	5.011			.875	.812	.875						
MS21260-20RH	MS21260-20LH	5.511		.654	1.000	.875	1.000	.7137	.7050				
MS21260-24RH	MS21260-24LH	6.511		.768	1.125	1.000	1.125	.8558	.8266		.078	.048	
MS21260-28RH	MS21260-28LH	7.166	.893	1.438	1.125	1.438	.9608	.9516					
MS21260-32RH	MS21260-32LH	8.229	1.002	1.625	1.438	1.625	1.0819	1.0772		.094	.062		
			1.128	1.875	1.625	1.812	1.2069	1.1972					

MS21260L

TABLE I. Part numbers and dimensions - Continued.

Dash number (size)	L +/- .063	Ls reference	ØM		ØN		P		Q +.031 -.016	S +.062 -.000	ØT	
L2	3.491	3.67	.090	+.010 -.000	.078	+.005 -.000	1.042	+.031 -.000	1.319	.969	.138	+.000 -.005
S2	2.616	2.79			.109				1.261	1.581	1.188	
L3	3.738	3.86	.119				1.511			1.863	1.438	
S3	2.863	2.98			.154				1.761	2.157	1.688	
L4	4.020	4.28	.188				2.011			2.455	1.938	
S4	3.145	3.40			.223				2.261	2.757	2.188	
L5	4.314	4.66	.257				2.511			3.061	2.438	
S5	3.439	3.78			.291				2.761	3.385	2.688	
L6	4.612	4.78	.326				3.011			3.718	2.938	
S6	3.737	3.90			.360				3.511	4.281	3.438	
-7	4.914	5.21	.430				+.008 -.000			4.011	4.812	3.938
-8	5.218	5.52			.514				+.009 -.000			
-9	5.542	5.90	.584				+.010 -.000			5.011	6.000	4.938
-10	5.875	6.30			.656				+.012 -.000			
-12	6.608	7.01	.722	+.008 -.000		6.511	7.938	6.438		1.250		
-14	7.468	7.94			.860				+.012 -.000		7.166	8.601
-16	8.718	9.28	.921	+.015 -.000		8.229	9.844	8.156		1.625		
-18	9.188	9.78			1.046				+.012 -.000		9.844	8.156
-20	10.469	11.16	.722	+.012 -.000		9.844	8.156	1.625				
-24	12.188	12.76			.860				+.015 -.000	9.844	8.156	1.625
-28	12.851	13.61	1.013	+.015 -.000		9.844	8.156	1.625				
-32	14.624	15.53			1.151				+.015 -.000	9.844	8.156	1.625

TABLE I. Part numbers and dimensions - Continued.

Dash number (size)	ØU reference	ØV ±.005	W ±.016	X	Y ±.047 2/	Z	ØBB
				Minimum		Minimum	
L2	.094	.063	1.174	.70	.375	.03	008 (.016 FIM)
S2							
L3			1.411	.80	.500		
S3							
L4	.125	.098	1.682	1.05	.563		
S4			1.958	1.29	.625		
L5							
S5			2.237	1.31	.750		
L6							
S6			2.518	1.55	.875		
-7			2.784	1.70			
-8			3.076	1.89	1.000		
-9			3.326	2.06			
-10			3.828	3.12	1.125		
-12			4.375	3.57	1.250		
-14			5.093	4.31			
-16	.188	.125	5.468	4.51	1.500		.010 (.020 FIM)
-18			6.093	5.04	1.750		
-20			7.188	5.80	2.000		
-24			7.846	6.31			
-28			9.000	7.26	2.250		.015 (.030 FIM)
-32							

2/ Includes last full thread engagement.

MS21260L

REQUIREMENTS:

1. Material: Material shall be in accordance with MIL-DTL-781
2. Finish: Finish shall be in accordance with MIL-DTL-781.
3. Threads: Threads shall be in accordance with FED-STD-H28/20.
4. Swage: Swage shall be in accordance with MIL-DTL-6117.
5. Tolerances: Unless otherwise specified, tolerances: decimals $\pm .010$, angles $\pm 3^\circ$.

NOTES:

1. Dimensions are in inches.
2. Remove all burrs and sharp edges. (See procurement specification for definition.)
3. Interpret drawing in accordance with ASME Y14.5M.
4. In the event of a conflict between the text of this document and the references cited herein, the text of this document takes precedence.
5. Unless otherwise specified, issues of reference documents are those in effect at the time of solicitation.
6. Interchangeability relationship: MS21260 parts can universally replace the canceled AN669 and NAS650 parts identified by the same dash number; but the canceled AN669 and NAS650 parts cannot replace the superseding MS21260 parts. MS21260 corrosion resistant steel parts can universally replace the canceled carbon and alloy steel parts identified by the same dash number.
7. Carbon and alloy steel parts are inactive for new design.

CHANGES FROM PREVIOUS ISSUE: Marginal notations are not used in this revision to identify changes with respect to the previous issue due to the extent of the changes.

Custodians:

Army - AR
Navy - AS
Air Force - 99

Preparing activity:

DLA - GS5
(Project 1560-0286)

Reviewers:

Army - CR4
Navy - MC
Air Force - 82