

INCH-POUND

MS21260K

2 February 2000

SUPERSEDING

MS21260J

22 February 1999

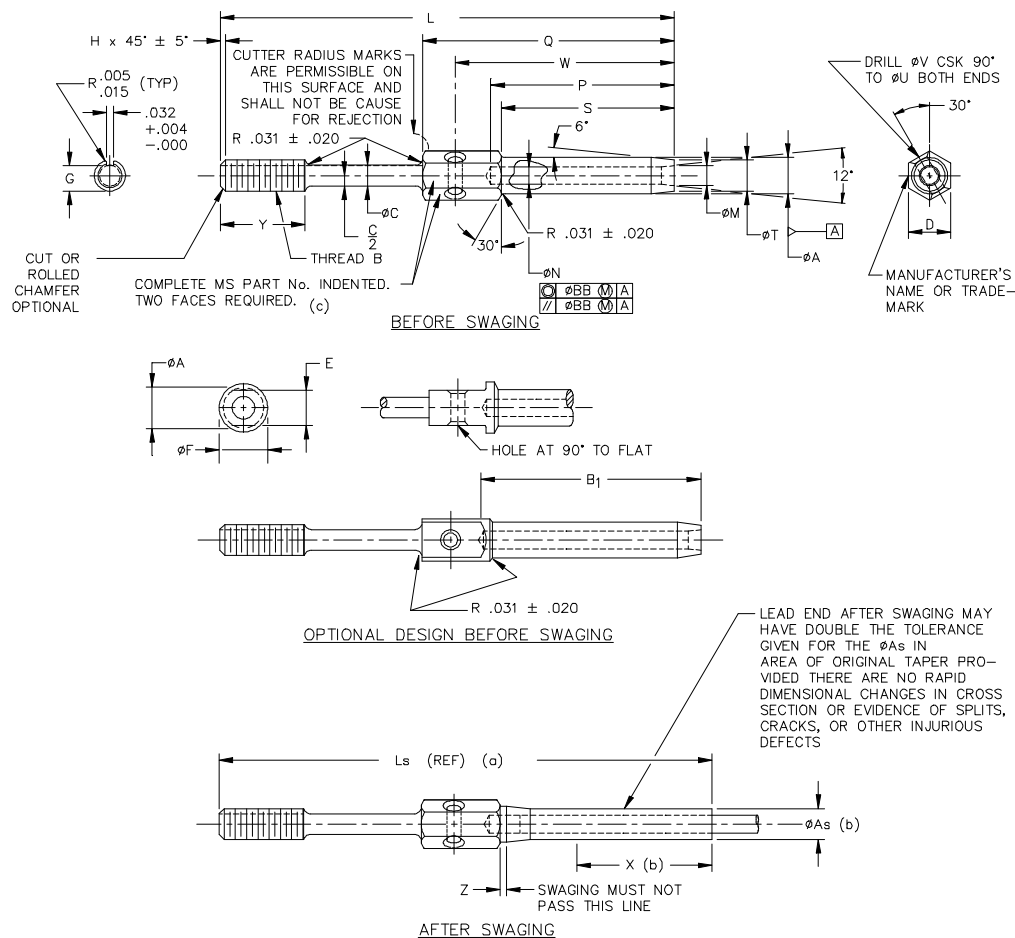
MILITARY SPECIFICATION SHEET

TERMINAL, WIRE ROPE, SWAGING STUD

K

This specification is approved for use by all departments and agencies of the Department of Defense.

The requirements for acquiring the product described herein shall consist of this specification sheet and the issue of the following specification listed in the issue of the Department of Defense Index of Specifications and Standards (DoDISS) specified in the solicitation: MIL-DTL-781.



- (a) Reference dimensions are for design purposes only and are not an inspection requirement.
 (b) Swaged terminals shall conform to ' ϕA_s ' for length X.
 (c) For terminal sizes -2 thru -5 use basic part number only, example: MS21260.

K Denotes change(s)

MS21260K

K

MS PART NUMBER		CABLE DIA.		MIN. BREAKING STRENGTH LB	THREAD B UN-3A UNF-3A	ØA		ØAs	
CORROSION RESISTANT STEEL RH THREAD	LH THREAD	NOM. REF.	MIN .						
MS21260L2RH	MS21260L2LH	1/16	.062	480	.1380 (# 6)-40	.160	+ .000 - .005	.138	+ .000 - .005
MS21260S2RH	MS21260S2LH								
MS21260L3RH	MS21260L3LH	3/32	.093	920	.1900 (#10)-32	.218		.190	
MS21260S3RH	MS21260S3LH								
MS21260L4RH	MS21260L4LH	1/8	.125	2000	.2500 (1/4)-28	.250		.219	+ .000 - .005
MS21260S4RH	MS21260S4LH								
MS21260L5RH	MS21260L5LH	5/32	.156	2800		.297		.250	
MS21260S5RH	MS21260S5LH								
MS21260L6RH	MS21260L6LH	3/16	.187	4200	.3125 (5/16)-24	.359		.313	+ .000 - .007
MS21260S6RH	MS21260S6LH								
MS21260-7RH	MS21260-7LH	7/32	.218	5600	.3750 (3/8)-24	.427		.375	
MS21260-8RH	MS21260-8LH	1/4	.250	7000		.494		.438	
MS21260-9RH	MS21260-9LH	9/32	.281	8000	.4375 (7/16)-20	.563		.500	+ .000 - .008
MS21260-10RH	MS21260-10LH	5/16	.312	9800	.5000 (1/2)-20	.635		.563	
MS21260-12RH	MS21260-12LH	3/8	.375	14400	.5625 (9/16)-18	.703		.625	
MS21260-14RH	MS21260-14LH	7/16	.437	17600	.6250 (5/8)-18	.781		.688	
MS21260-16RH	MS21260-16LH	1/2	.500	22800	.6250 (5/8)-18	.844		.750	+ .000 - .009
MS21260-18RH	MS21260-18LH	9/16	.562	28500	.7500 (3/4)-16	.984		.875	
MS21260-20RH	MS21260-20LH	5/8	.625	35000	.8750 (7/8)-14	1.109		1.000	+ .000 - .010
MS21260-24RH	MS21260-24LH	3/4	.750	49600	1.0000 (1)-12	1.359		1.250	
MS21260-28RH	MS21260-28LH	7/8	.875	66500	1.1250 (1 1/8)-12	1.593	+ .000 - .010	1.437	+ .000 - .012
MS21260-32RH	MS21260-32LH	1	1.000	85400	1.2500 (1 1/4)-12	1.812		1.625	

MS PART NUMBER		B ₁		ØC + .006 - .000 .	D	E + .000 - .010	ØF	G		H	
CORROSION RESISTANT STEEL RH THREAD	LH THREAD							MAX	MIN	MAX	MIN
MS21260L2RH	MS21260L2LH	1.042	± .063	.092	.188	.156	.188.	.1139	.1094	.031	.015
MS21260S2RH	MS21260S2LH										
MS21260L3RH	MS21260L3LH	1.261		.133	.250	.187	.250	.1638	.1568		
MS21260S3RH	MS21260S3LH										
MS21260L4RH	MS21260L4LH	1.511		.195	.313	.250	.313	.2224	.2152		
MS21260S4RH	MS21260S4LH										
MS21260L5RH	MS21260L5LH	1.761									
MS21260S5RH	MS21260S5LH										
MS21260L6RH	MS21260L6LH	2.011		.245	.375	.312	.375	.2830	.2754		
MS21260S6RH	MS21260S6LH										
MS21260-7RH	MS21260-7LH	2.261		.306	.438	.375	.438	.3454	.3378		
MS21260-8RH	MS21260-8LH	2.511			.500	.438	.500				
MS21260-9RH	MS21260-9LH	2.761		.361	.625	.563	.625	.4052	.4072		
MS21260-10RH	MS21260-10LH	3.011		.406	.688	.625	.688	.4678	.4597		
MS21260-12RH	MS21260-12LH	3.511		.476	.750	.688	.750	.5285	.5201		
MS21260-14RH	MS21260-14LH	4.011		.538	.812	.750	.812	.5909	.5826	.063	.031
MS21260-16RH	MS21260-16LH	4.698			.875	.812	.875				
MS21260-18RH	MS21260-18LH	5.011		.654	1.000	.875	1.000	.7137	.7050		.048
MS21260-20RH	MS21260-20LH	5.511		.768	1.125	1.000	1.125	.8558	.8266	.078	
MS21260-24RH	MS21260-24LH	6.511		.893	1.438	1.125	1.438	.9608	.9516		.062
MS21260-28RH	MS21260-28LH	7.166		1.002	1.625	1.438	1.625	1.0819	1.0772	.094	
MS21260-32RH	MS21260-32LH	8.229		1.128	1.875	1.625	1.812	1.2069	1.1972		

MS21260K

DASH NUM (SIZE)	L +/- .063	Ls REF	ØM		ØN		P		Q +.031 -.016	S +.062 -.000	ØT	
L2	3.491	3.67	.090	+.010 -.000	.078	+.005 -.000	1.042	+.031 -.000	1.319	.969	.138	+.000 -.005
S2	2.616	2.79										
L3	3.738	3.86	.119		.109		1.261		1.581	1.188	.190	
S3	2.863	2.98										
L4	4.020	4.28	.154		.141		1.511		1.863	1.438	.219	
S4	3.145	3.40										
L5	4.314	4.66	.188		.172		1.761		2.157	1.688	.250	+.000 -.007
S5	3.439	3.78										
L6	4.612	4.78	.223		.203		2.011		2.257	1.938	.313	
S6	3.737	3.90										
-7	4.914	5.21	.257	+.012 -.000	.234	+.008 -.000	2.261	+.047 -.000	2.757	2.188	.375	+.000 -.008
-8	5.218	5.52	.291		.265		2.511		3.061	2.438	.438	
-9	5.542	5.90	.326		.297		2.761		3.385	2.688	.500	
-10	5.875	6.30	.360		.328		3.011		3.718	2.938	.563	
-12	6.608	7.01	.430		.390		3.511		4.281	3.438	.625	+.000 -.009
-14	7.468	7.94	.514		.468		4.011		4.812	3.938	.688	
-16	8.718	9.28	.584		.531	+.010 -.000	4.698	+.062 -.000	5.562	4.625	.750	
-18	9.188	9.78	.653		.594		5.011		6.000	4.938	.875	
-20	10.469	11.16	.722		.656		5.511		6.750	5.438	1.000	
-24	12.188	12.76	.860		.781		6.511		7.938	6.438	1.250	+.000 -.012
-28	12.851	13.61	1.013		.921		7.166		8.601	7.094	1.437	
-32	14.624	15.53	1.151		1.046		8.229		9.844	8.156	1.625	

DASH NUM (SIZE)	ØU REF	ØV ±.00 5	W ±.016	X MIN	Y ±.047 (b)	Z MIN	ØBB
L2	.094	.063	1.174	.70	.375	.03	.008 (.016 FIM)
S2							
L3			1.411	.80	.500		
S3							
L4	.125	.098	1.682	1.05	.563		
S4							
L5			1.958	1.29	.625		
S5							
L6			2.237	1.31	.750		
S6							
-7			2.518	1.55	.875		
-8			2.784	1.70			
-9			3.076	1.89	1.000		
-10			3.326	2.06			
-12			3.828	3.12	1.125		
-14			4.375	3.57	1.250		.010 (.020 FIM)
-16	.188	.125	5.093	4.31			
-18			5.468	4.51	1.500		
-20			6.093	5.04	1.750		
-24			7.188	5.80	2.000		.015 (.030 FIM)
-28			7.846	6.31			.020 (.040 FIM)
-32			9.000	7.26	2.250		

(a) To achieve the minimum breaking strength, for the terminal test only, a galvanized carbon steel wire rope shall be used.

(b) Includes last full thread engagement.

MS21260K

REQUIREMENTS

1. Material: In accordance with MIL-DTL-781
2. Finish: In accordance with MIL-DTL-781.
3. Threads: Threads in accordance with FED-STD-H28/20.
4. Swage in accordance with specification MIL-DTL-6117.
5. Tolerance: Unless otherwise specified, tolerances: decimals $\pm .010$, angles $\pm 3^\circ$.

NOTES:

1. Dimensions in inches,
2. Remove all burrs and sharp edges (see procurement specification for definition).
3. Interpret drawing in accordance with ASME Y14.5M.
4. In the event of a conflict between the text of this document and the references cited herein the text of this document takes precedence..
5. Unless otherwise specified, issues of reference documents are those in effect at the time of solicitation..
6. Interchangeability relationship: MS21260 parts can universally replace the canceled AN669 and NAS650 parts identified by the same dash number; but the canceled AN669 and NAS650 parts cannot replace the superseding MS21260 parts. MS21260 corrosion resistant steel parts can universally replace the canceled carbon and alloy steel parts identified by the same dash number.
7. Carbon and alloy steel parts are inactive for new design.



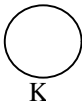
MILITARY INTEREST

Custodians:

Navy - AS
 Army - AR
 Air Force - 99

Preparing Activity:
 DLA- GS

(Project: 1560-0253)



Reviewers:

Army – CR4
 Navy – MC
 Air Force – 82