

INCH-POUND

MS21260H

15 August 1997

MS21260G

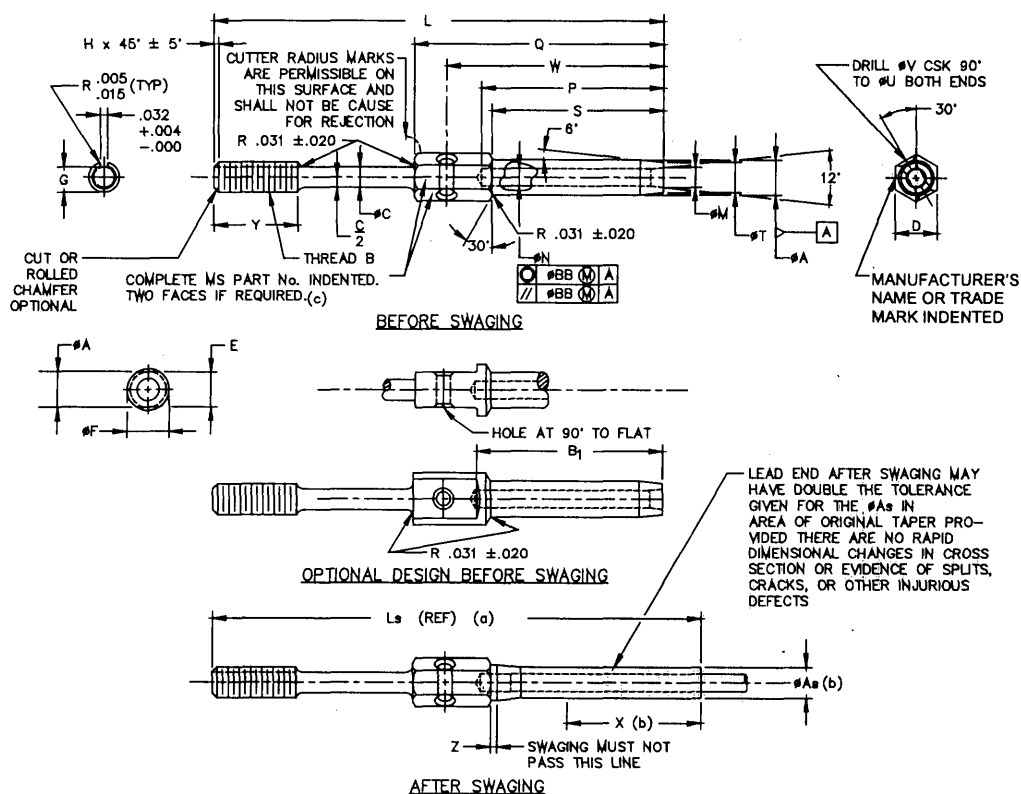
12 March 1979

MILITARY SPECIFICATION SHEET

TERMINAL, WIRE ROPE, STUD

This specification sheet is approved for use by all Departments and Agencies of the Department of Defense.

The requirements for acquiring the product described herein shall consist of this specification sheet and the issue of the following specification listed in that issue of the Department of Defense Index of Specifications and Standards (DoDISS) specified in the solicitation: MIL-DTL-781.



- (a) Reference dimensions are for design purposes only and are not an inspection requirement.
 (b) Swaged terminals shall conform to 'ØAs' for length 'X'.
 (c) For terminal sizes -2 thru -5 use basic part number only, example: MS21260.

(H) Entire document revised

AMSC N/A

FSC 4030

DISTRIBUTION STATEMENT A. Approved for public release; distribution is limited.

MS21260H

MS PART NUMBER				THREAD B UN-3A UNF-3A	MIN. BREAKING STRENGTH LB (a)	NOM. CABLE DIA. REF	Q _A	Q _{AS}	B ₁	ØC + .006 - .000	D	E + .000 - .010	ØF + .010 - .005	G		H	
DASH NUMBER (SIZE)	L +/- .063	Is REF	Q _M											MAX	MIN	MAX	MIN
MS212602RH	MS212602LH	.062		No. 6-40	480		.160	.138	1.042		.188	.156	.188	.1139	.1094	.031	
MS212605RH	MS212605LH	.093		No. 10-32	920		.218	.190	1.261		.250	.187	.250	.1638	.1568		
MS212605RH	MS212605LH	.125		1/4-28	2000		.250	.219	1.511		.313	.250	.313	.2224	.2152	.047	.015
MS212605RH	MS212605LH	.156			2800		.297	.250	1.761		.375	.312	.375	.2830	.2754		
MS212605RH	MS212605LH	.187		5/16-24	4200		.359	.313	2.011		.438	.375	.438	.3454	.3378		
MS212605RH	MS212605LH	.218		3/8-24	5600		.427	.375	2.261	.063	.500	.438	.500				
MS212605RH	MS212605LH	.250			7000		.494	.438	2.511		.563	.500	.563	.4052	.4072		
MS212605RH	MS212605LH	.281		7/16-20	8000		.563	.500	2.761		.688	.625	.688	.4678	.4597		
MS212605RH	MS212605LH	.312		1/2-20	9800		.635	.563	3.011		.750	.688	.750	.5285	.5201		
MS212605RH	MS212605LH	.375		9/16-18	14400		.703	.625	3.511		.875	.812	.875	.5909	.5826		
MS212605RH	MS212605LH	.437		5/8-18	17600		.781	.688	4.011		1.000	.938	1.000	.7137	.7050	.063	.031
MS212605RH	MS212605LH	.500		5/8-18	22800		.844	.750	4.698		1.125	1.000	1.125	.8558	.8266	.078	.048
MS212605RH	MS212605LH	.562		3/4-16	28500		.984	.875	5.011		1.250	1.000	1.250	.9608	.9516		
MS212605RH	MS212605LH	.625		7/8-14	35000		1.109	1.000	5.511		1.375	1.000	1.375	1.0819	1.0772	.094	.062
MS212605RH	MS212605LH	.750		1-12	49600		1.359	1.250	6.511		1.625	1.000	1.625	1.2069	1.1972		
MS212605RH	MS212605LH	.875		1 1/8-12	66500		1.593	1.437	7.166		1.875	1.000	1.875				
MS212605RH	MS212605LH	1.000		1 1/4-12	85400		1.812	1.625	8.229								

DASH NUMBER (SIZE)	L +/- .063	Is REF	Q _M	ØN	P	Q + .031 - .016	S + .062 - .000	ØT	ØU + .005 - .000	W +/- .016	X MIN	Y +/- .047	Z MIN	ØBB
L2	3.491	3.67	.090	.078	1.042	1.319	.969	.138	.094	1.174	.70	.375		
S2	2.616	2.79		.109	1.261	1.581	1.188	.190		1.411	.80	.500		
L3	3.738	3.86	.119		1.511	1.863	1.438	.219		1.682	1.05	.563		
S3	2.863	2.98			1.761	2.157	1.688	.250		1.958	1.29	.625		
L4	4.020	4.28	.134	.141	2.011	2.257	1.938	.313		2.237	1.31	.750	.03	
S4	3.145	3.40		.172	2.261	2.757	2.188	.375		2.518	1.55	.875		
S5	3.439	3.78	.188	.203	2.511	3.061	2.438	.438		2.784	1.70	1.000		
L6	4.612	4.78	.223	.234	2.761	3.385	2.688	.500		3.076	1.89	1.000		
S6	3.737	3.90		.265	3.011	3.718	2.938	.563		3.326	2.06			
-7	4.914	5.21	.257	.297	3.511	4.281	3.438	.625		3.828	3.12	1.125		
-8	5.218	5.52	.291	.328	4.011	4.812	3.938	.688		4.375	3.57	1.250		
-9	5.542	5.90	.326	.390	4.511	5.562	4.625	.750		5.093	4.31	1.500		
-10	5.875	6.30	.360	.468	5.011	6.000	4.938	.875		5.468	4.51	1.500		
-12	6.608	7.01	.430	.531	5.511	6.750	5.438	1.000		6.093	5.04	1.750		
-14	7.468	7.94	.514	.594	6.011	7.938	6.438	1.250		7.188	5.80	2.000		
-16	8.718	9.28	.584	.781	6.511	8.601	7.094	1.437		7.846	6.31			
-18	9.188	9.78	.653	.921	7.011	9.844	8.156	1.625		9.000	7.26	2.250		
-20	10.469	11.16	.722	1.046	7.511									
-24	12.188	12.76	.860		8.011									
-28	12.851	13.61	1.013		8.511									
-32	14.624	15.53	1.151		9.011									

(a) To achieve the minimum breaking strength, for the terminal test only, a galvanized carbon steel wire rope shall be used.

MS21260H

REQUIREMENTS:

1. Material: Steel, corrosion resistant, steel 303Se (UNS S30323 or S30300) or 304 (UNS S30400).
2. Finish: Finish in accordance with MIL-DTL-781.
3. Threads: Threads in accordance with FED-STD-H28/20.
4. Swage in accordance with specification MIL-DTL-6117
5. Tolerance: Unless otherwise specified, tolerances: decimals $\pm .010$, angles $\pm 3^\circ$.

NOTES:

1. Dimension in inches.
2. Remove all burrs and sharp edges
3. Interpret drawing in accordance with ASME Y14.5M.
4. In the event of a conflict between the text of this document and the references cited herein the text of this document takes precedence.
5. Unless otherwise specified, issues of referenced documents are those in effect at the time of solicitation.
6. Interchangeability relationship: MS21260 parts can universally replace the canceled AN669 and NAS650 parts identified by the same dash number; but the canceled AN669 and NAS650 parts cannot replace the superseding MS21260 parts. MS21260 corrosion resistant steel parts can universally replace the canceled carbon and alloy steel parts identified by the same dash number.

MILITARY INTEREST

Custodians:

Army - AR
Navy - AS
Air Force - 99

Preparing Activity:

DLA-IS

(Project 4030-0278)

Review activities:

Army - ME
Navy - MC