

INCH-POUND

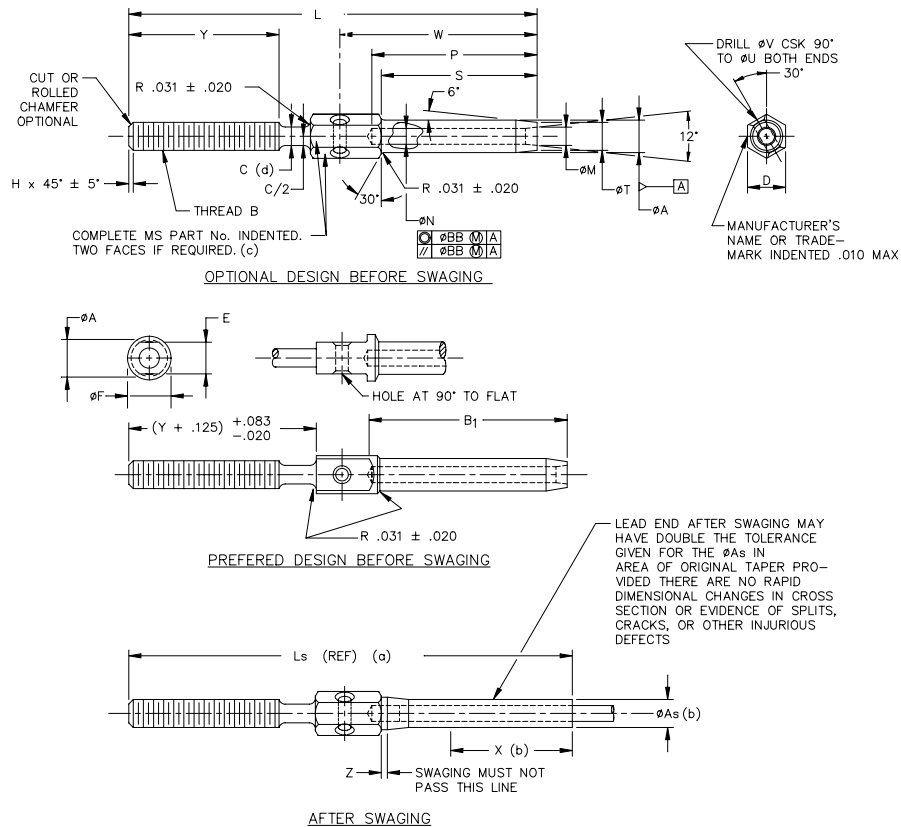
MS21259J
w/Amendment 1
12 October 2007
SUPERSEDING
MS21259J
5 November 2001

DETAIL SPECIFICATION SHEET

TERMINAL, WIRE ROPE, SWAGING, STUD, LONG THREAD

This specification sheet is approved for use by all Departments and Agencies of the Department of Defense.

The requirements for acquiring the product described herein shall consist of this specification sheet, MIL-DTL-781, and QPL-781.



- NOTES:
- Reference dimensions are for design purposes only and are not an inspection requirement.
 - Swaged terminals shall conform to ØAs for length X.
 - For terminal sizes -2 through -5 use basic part number only, example: MS21259.
 - Undercut (ØC) is optional for rolled threads only. The .031 ± .020 shall be required in any case.

FIGURE 1. Terminal, wire rope, swaging, stud, long thread.

MS21259J
w/Amendment 1

TABLE I. Dash numbers and dimensions.

Dash number		Wire rope diameter		Minimum breaking strength lbs. $\frac{1}{2}$	Thread B UN-3A UNF-3A	$\varnothing A$	$\varnothing As$	
RH thread	LH thread	Nominal	Minimum					
-2RH	-2LH	1/16	0.062	480	0.1380 (# 6)-40	0.160	+0.000 -0.005	0.138
-3RH	-3LH	3/32	0.093	920	0.1900 (#10)-32	0.218		0.190
-4RH	-4LH	1/8	0.125	2,000	0.2500 (1/4)-28	0.250		0.219
-5RH	-5LH	5/32	0.156	2,800		0.297		0.250
-6RH	-6LH	3/16	0.187	4,200	0.3125 (5/16)-24	0.359	+0.000 -0.007	0.313
-7RH	-7LH	7/32	0.218	5,600	0.3750 (3/8)-24	0.427		0.375
-8RH	-8LH	1/4	0.250	7,000		0.494	0.438	0.438
-9RH	-9LH	9/32	0.281	8,000	0.4375 (7/16)-20	0.563	+0.000 -0.005	0.500
-10RH	-10LH	5/16	0.312	9,800	0.5000 (1/2)-20	0.635		0.563
-12RH	-12LH	3/8	0.375	14,400	0.5625 (9/16)-18	0.703		0.625
-14RH	-14LH	7/16	0.437	17,600	0.6250 (5/8)-18	0.781		0.688
-16RH	-16LH	1/2	0.500	22,800		0.844	0.750	+0.000
-18RH	-18LH	9/16	0.562	28,500	0.7500 (3/4)-16	0.984	+0.000 -0.010	0.875
-20RH	-20LH	5/8	0.625	35,000	0.8750 (7/8)-14	1.109		1.000
-24RH	-24LH	3/4	0.750	49,600	1.0000 (1)-12	1.359	+0.000 -0.012	1.250
-28RH	-28LH	7/8	0.875	66,500	1.1250 (1 1/8)-12	1.593		1.437
-32RH	-32LH	1	1.000	85,400	1.2500 (1 1/4)-12	1.812		1.625

$\frac{1}{2}$ / To achieve the minimum breaking strength, for the terminal test only, a galvanized carbon steel wire rope shall be used.

TABLE I. Dash numbers and dimensions - Continued.

Dash number		B_1 ± 0.063	$\varnothing C$		D	E
RH thread	LH thread					
-2RH	-2LH	1.042	0.121	+0.017 -0.005	0.188	0.156
-3RH	-3LH	1.261	0.169	+0.021 -0.005	0.250	0.187
-4RH	-4LH	1.511	0.226	+0.024 -0.005	0.313	0.250
-5RH	-5LH	1.761				
-6RH	-6LH	2.011	0.285	+0.028 -0.005	0.375	0.312
-7RH	-7LH	2.261	0.347		0.438	0.375
-8RH	-8LH	2.511			0.500	0.438
-9RH	-9LH	2.761	0.405		0.625	0.563
-10RH	-10LH	3.011	0.467	+0.033 -0.005	0.688	0.625
-12RH	-12LH	3.511	0.529		0.750	0.688
-14RH	-14LH	4.011	0.592		0.812	0.750
-16RH	-16LH	4.698			0.875	0.812
-18RH	-18LH	5.011	0.717		1.000	0.875
-20RH	-20LH	5.511	0.842		1.125	1.000
-24RH	-24LH	6.511	0.967		1.437	1.125
-28RH	-28LH	7.166	1.092		1.625	1.437
-32RH	-32LH	8.229	1.217	1.875	1.625	

MS21259J
w/Amendment 1

TABLE I. Dash numbers and dimensions - Continued.

Dash number	ØF	H		L ±0.063	Ls reference	ØM		ØN		P	
		Maximum	Minimum								
-2	0.188	0.031	0.015	2.473	2.65	0.090	+0.010 -0.000	0.078	+0.005 -0.000	1.042	+0.031 -0.000
-3	0.250	0.047		2.879	3.00	0.119		0.109		1.261	
-4	0.313			3.333	3.59	0.154		0.141		1.511	
-5	0.313			3.627	3.97	0.188		0.172		1.761	
-6	0.375			4.002	4.17	0.223		0.203		2.011	
-7	0.438			4.516	4.81	0.257		0.234		2.261	
-8	0.500			4.937	5.24	0.291		0.265		2.511	
-9	0.625			5.391	5.75	0.326		0.297		2.761	
-10	0.688			5.844	6.27	0.360		0.328		3.011	
-12	0.750			0.063	0.031	6.656		7.06		0.430	
-14	0.812	7.437	7.91			0.514	0.468	-0.000	4.011		
-16	0.875	8.187	8.75			0.584	0.531	+0.009	4.698		
-18	1.000	9.125	9.72			0.653	0.594	-0.000	5.011		
-20	1.125	0.078	0.046	10.375	11.06	0.722	0.656	+0.010 -0.000	5.511	+0.062 -0.000	
-24	1.438			12.063	12.64	0.860	0.781	+0.012	6.511		
-28	1.625			13.226	13.99	1.013	0.921	-0.000	7.166		
-32	1.812	0.094	0.062	14.969	15.88	1.151	1.046	-0.000	8.229		

TABLE I. Dash numbers and dimensions - Continued.

Dash number	S +0.062 -0.000	ØT		ØU reference	ØV ±0.005	W ±0.016	X Minimum	Y +0.083 -0.020 2/	Z Minimum	ØBB
-2	0.969	0.138	+0.000 -0.005	0.094	0.063	1.174	0.70	1.045	0.03	0.008 (0.016 FIM)
-3	1.188	0.190				1.411	0.80	1.204		
-4	1.438	0.219				1.682	1.05	1.376		
-5	1.688	0.250				1.958	1.29	1.376		
-6	1.938	0.313				2.237	1.31	1.453		
-7	2.188	0.375		2.518	1.55	1.625				
-8	2.438	0.438		2.784	1.70	1.750				
-9	2.688	0.500		3.076	1.89	1.875				
-10	2.938	0.563		3.326	2.06	2.000				
-12	3.438	0.625		3.828	3.12	2.250				
-14	3.938	0.688	4.375	3.57	2.500					
-16	4.625	0.750	5.093	4.31						
-18	4.938	0.875	5.468	4.51	3.000					
-20	5.438	1.000	6.093	5.04	3.500					
-24	6.438	1.250	7.188	5.80	4.000					
-28	7.094	1.437	7.846	6.31	4.500					
-32	8.156	1.625	9.000	7.26	5.000					
									0.010 (0.020 FIM)	
									0.015 (0.030 FIM)	
									0.020 (0.040 FIM)	

2/ Includes last full thread engagement.

REQUIREMENTS:

1. Material: Material shall be in accordance with MIL-DTL-781.
2. Finish: Finish shall be in accordance with MIL-DTL-781.
3. Threads: Threads shall be in accordance with FED-STD-H28/20.
4. Swage: Swage shall be in accordance with MIL-DTL-6117.

MS21259J
w/Amendment 1

5. Tolerances: Unless otherwise specified, tolerances: decimals ± 0.010 , angles $\pm 3^\circ$.

NOTES:

(This section contains information of a general or explanatory nature that may be helpful, but is not mandatory.)

1. The part or identifying number (PIN) consists of the letters MS, the specification sheet number and a dash number taken from [table I](#).

EXAMPLE: MS 21259 - 6RH

Dash number (see [table I](#))

Specification sheet number

MS prefix

MS21259-6RH Indicates - Terminal, 0.3125 (5/16)-24 right hand thread.

2. Dimensions are in inches.
3. Remove burrs and sharp edges. (See MIL-DTL-781.)
4. Interpret drawing in accordance with ASME Y14.5M.
5. These terminals are not to be used with turnbuckle bodies (barrels).
6. In the event of a conflict between the text of this document and the references cited herein, the text of this document takes precedence.
7. Unless otherwise specified, issues of reference documents are those in effect at the time of solicitation.
8. Interchangeability relationship: MS21259 parts can universally replace the canceled AN666 parts identified by the same dash number; but the canceled AN666 parts cannot replace the superseding MS21259 parts. MS21259 corrosion resistant steel parts can universally replace the canceled carbon and alloy steel parts identified by the same dash number.
9. Carbon and alloy steel parts are inactive for new design.

MS21259J
w/Amendment 1

AMENDMENT ANNOTATIONS: The margins of this specification are marked with vertical lines to indicate where modifications from this amendment were made. This was done as a convenience only and the Government assumes no liability whatsoever for any inaccuracies in these notations. Bidders and contractors are cautioned to evaluate the requirements of this document based on the entire content irrespective of the marginal notations.

Custodians:

Navy - AS
Air Force - 99

Preparing Activity:

DLA - GS5

(Project 1640-2007-003)

Review Activities:

Navy - MC
Air Force - 71

NOTE: The activities listed above were interested in this document as of the date of this document. Since organizations and responsibilities can change, you should verify the currency of the information above using the ASSIST database at <http://assist.daps.dla.mil/>.