

INCH-POUND

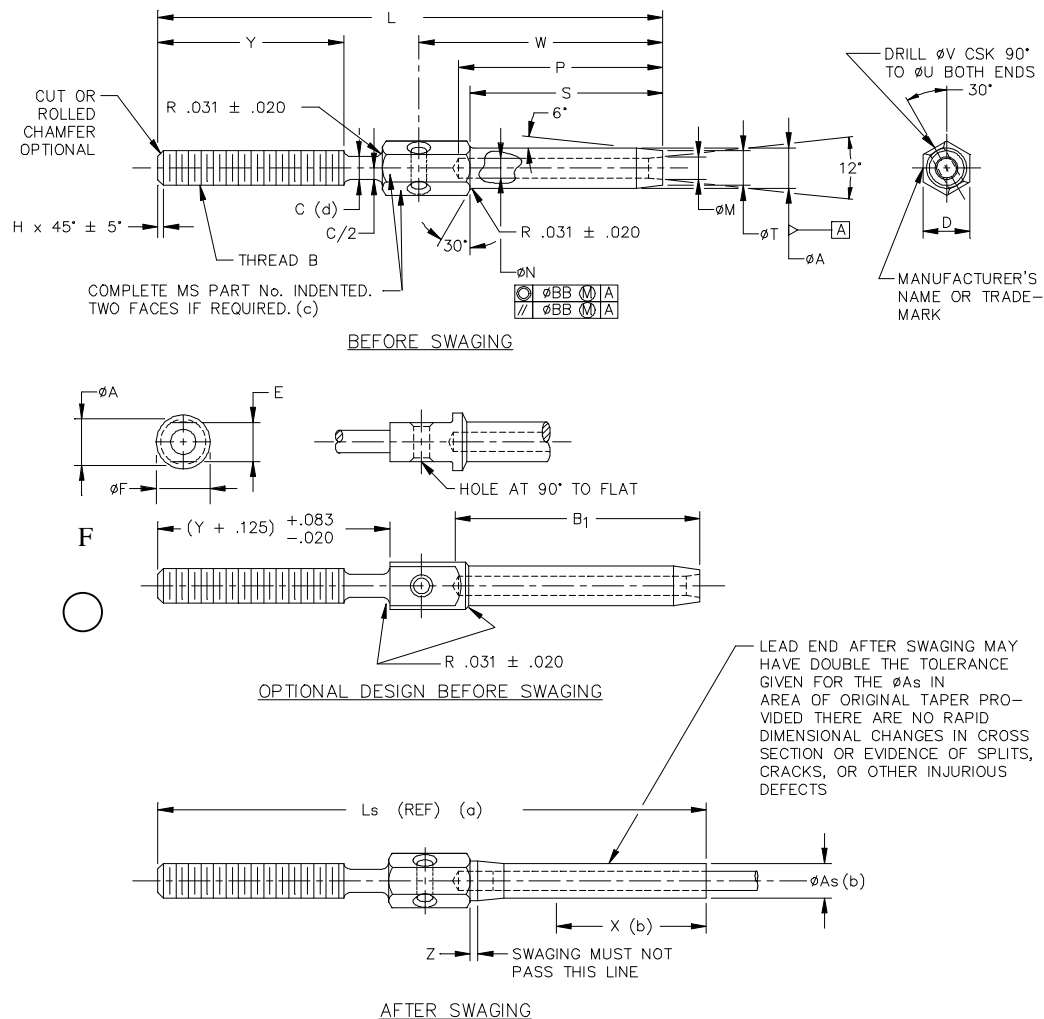
MS21259F
 22 FEBRUARY 1999
 Superseding
 MS21259E
 15 August 1997

MILITARY SPECIFICATION SHEET

TERMINAL, WIRE ROPE, STUD

This specification sheet is approved for use by all Departments and Agencies of the Department of Defense.

The requirements for acquiring the product described herein shall consist of this specification sheet and the issue of the following specification listed in that issue of the Department of Defense Index of Specifications and Standards (DoDISS) specified in the solicitation: MIL-DTL-781.



- (a) Reference dimensions are for design purposes only and are not an inspection requirement.
- (b) Swaged terminals shall conform to ØAs for length X.
- (c) For terminal sizes -2 thru -5 use basic part number only, example: MS21259.
- (d) Undercut (ØC) is optional for rolled threads only. The .031 ± .020 shall be required in any case.

(F) Denotes change(s)

MS21259F

MS PART NUMBERS				NOM CABLE DIA. REF	MIN. BREAKING STRENGTH LB (•)	THREAD B UN-3A UNF-3A	ØA		ØAs		B _s ± .063	ØC		D	E + .000 - .010																																																																																																																																																																																																																																																																																																																																																																																																																																																																																																																																																																																																																																																																																																																																																																																																																																																																																																																																																																																																																																																																																																																																																																																																																																																																																																																						
CORROSION RESISTANT STEEL		RH THREAD	MS21259-2RH				MS21259-2LH	.160	.138	+ .000		- .005	.121			+ .017 - .005																																																																																																																																																																																																																																																																																																																																																																																																																																																																																																																																																																																																																																																																																																																																																																																																																																																																																																																																																																																																																																																																																																																																																																																																																																																																																																																					
RH THREAD				MS21259-2RH	MS21259-2LH	MS21259-3RH					MS21259-3LH			MS21259-4RH	MS21259-4LH		MS21259-5RH	MS21259-5LH	MS21259-6RH	MS21259-6LH	MS21259-7RH	MS21259-7LH	MS21259-8RH	MS21259-8LH	MS21259-9RH	MS21259-9LH	MS21259-10RH	MS21259-10LH	MS21259-12RH	MS21259-12LH	MS21259-14RH	MS21259-14LH	MS21259-16RH	MS21259-16LH	MS21259-18RH	MS21259-18LH	MS21259-20RH	MS21259-20LH	MS21259-24RH	MS21259-24LH	MS21259-28RH	MS21259-28LH	MS21259-32RH	MS21259-32LH																																																																																																																																																																																																																																																																																																																																																																																																																																																																																																																																																																																																																																																																																																																																																																																																																																																																																																																																																																																																																																																																																																																																																																																																																																																																																									
				.062 (1/16)	480	.1380 (# 6)-40	.160	.138	1.042	.121	.188	.156																																																																																																																																																																																																																																																																																																																																																																																																																																																																																																																																																																																																																																																																																																																																																																																																																																																																																																																																																																																																																																																																																																																																																																																																																																																																																																																									

DASH NUM (SIZE)	ØF	H		L	Ls REF	ØM	ØN	P	S	ØT	ØU REF	ØV ± .005	W ± .016	X MIN	Y + .083 - .020 (b)	Z MIN	ØBB
		MAX	MIN														
-2	.188	.031		2.473	2.65	.090		1.042	.969	.138	.094	.063	1.174	.70	1.045		
-3	.250			2.879	3.00	.119		1.261	1.188	.190			1.411	.80	1.204		
-4	.313			3.333	3.59	.154		1.511	1.438	.219			1.682	1.05	1.376		
-5	.375	.047	.015	3.627	3.97	.188	.005	1.761	1.688	.250			1.958	1.29	1.576		
-6	.438			4.002	4.17	.223		2.011	1.938	.313			2.237	1.31	1.453		.008 (1/16 FIM)
-7	.500			4.516	4.81	.257		2.261	2.188	.375			2.518	1.55	1.625		
-8	.625			5.391	5.24	.291		2.511	2.438	.438			2.784	1.70	1.750		
-9	.688			5.844	6.27	.340		2.761	2.688	.500			3.076	1.89	1.875		
-10	.750	.063	.031	6.656	7.06	.430		3.011	2.938	.563			3.326	2.06	2.000		
-12	.812			7.437	7.91	.514		3.511	3.438	.625			3.828	3.12	2.250		
-14	.875			8.187	8.75	.584	.012	4.011	3.938	.688			4.375	3.57	2.500		
-16	1.000			9.125	9.72	.653		4.698	4.625	.750			5.093	4.31	3.000		.010 (.020 FIM)
-18	1.125	.078	.046	10.375	11.06	.722		5.011	4.938	.875			5.468	4.51	3.000		
-20								5.511	5.438	1.000	.156	.125	6.093	5.04	3.500		.015 (.030 FIM)
-24	1.438			12.063	12.64	.860	.015	6.511	6.438	1.250			7.188	5.80	4.000		.020 (.040 FIM)
-28	1.625	.094	.062	13.226	13.99	1.013		7.166	7.094	1.437			7.846	6.31	4.500		
-32	1.812			14.969	15.88	1.151	.046	8.229	8.156	1.625			9.000	7.26	5.000		

(a) TO ACHIEVE THE MINIMUM BREAKING STRENGTH, FOR THE TERMINAL TEST ONLY, A GALVANIZED CARBON STEEL WIRE ROPE SHALL BE USED.

(b) INCLUDES LAST FULL THREAD ENGAGEMENT.

MS21259F

REQUIREMENTS:

(F)

1. Material: In accordance with MIL-DTL-781.
2. Finish: In accordance with MIL-DTL-781.
3. Threads: Shall be in accordance with FED-STD-H28/20.
4. Swage: Shall be in accordance with specification MIL-DTL-6117.
5. Tolerance: Unless otherwise specified, tolerances: decimals $\pm .010$, angles $\pm 3^\circ$.

NOTES:

1. Dimensions in inches.
2. Remove burrs and sharp edges.
3. Interpret drawing in accordance with ASME Y14.5M.
4. These terminals are not to be used with turnbuckle barrels.
5. In the event of a conflict between the text of this document and the references cited herein the text of this document takes precedence..
6. Unless otherwise specified, issues of reference documents are those in effect at the time of solicitation..
7. Interchangeability relationship: MS21259 parts can universally replace the canceled AN666 parts identified by the same dash number; but the canceled AN666 parts cannot replace the superseding MS21259 parts. MS21259 corrosion resistant steel parts can universally replace the canceled carbon and alloy steel parts identified by the same dash number.
- (F) 8. Carbon and alloy steel parts are inactive for new design.

MILITARY INTEREST

Custodians
 Army - AR
 Navy - AS
 Air Force - 99

Review activities:

Navy - MC
 Air Force - 82
 DLA - IS

(F)

Preparing Activity:
 DLA - GS

(PROJECT: 1560-0246)