

INCH-POUND

MS21259E

15 August 1997

MS21259D

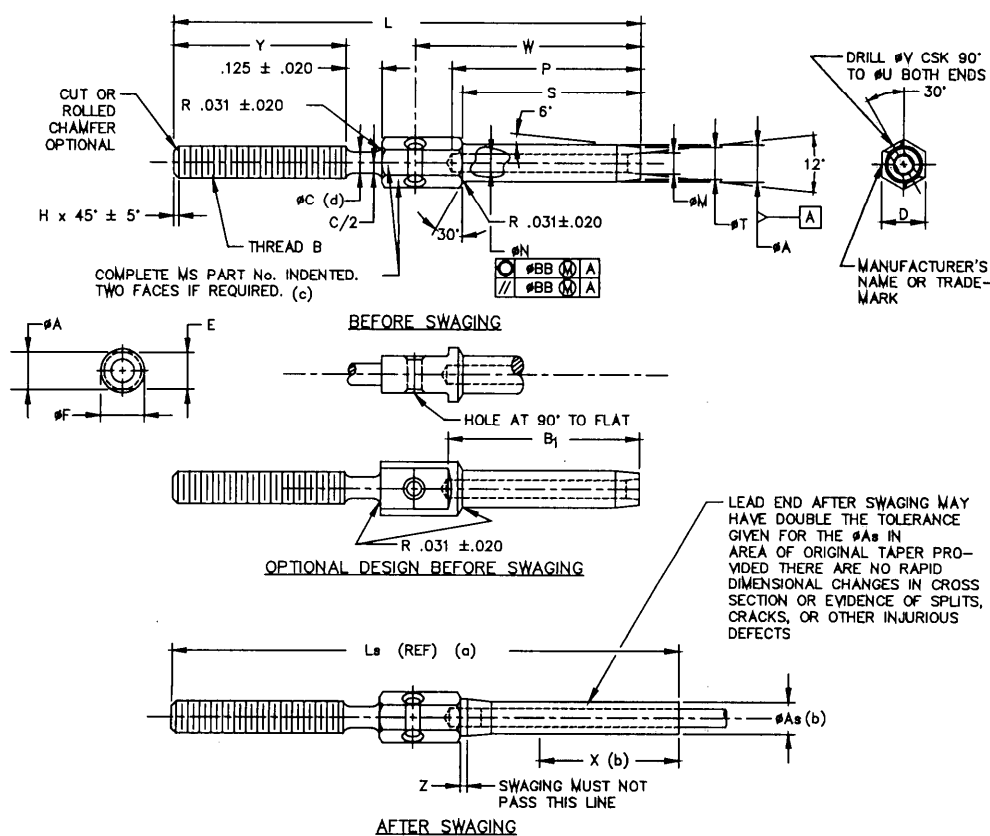
10 February 1969

## MILITARY SPECIFICATION SHEET

## TERMINAL, WIRE ROPE, STUD

This specification sheet is approved for use by all Departments and Agencies of the Department of Defense.

The requirements for acquiring the product described herein shall consist of this specification sheet and the issue of the following specification listed in that issue of the Department of Defense Index of Specifications and Standards (DoDISS) specified in the solicitation: MIL-DTL-781.



- (a) Reference dimensions are for design purposes only and are not an inspection requirement.
- (b) Swaged terminals shall conform to  $\varnothing A_s$  for length X.
- (c) For terminal sizes -2 thru -5 use basic part number only, example: MS21259.
- (d) Undercut ( $\varnothing C$ ) is optional for rolled threads only. The  $.031 \pm .020$  fillet shall be required in any case.

(E) Entire document revised

AMSC N/A

FSC 4030

DISTRIBUTION STATEMENT A. Approved for public release; distribution is limited.

MS21259E

MS PART NUMBERS				MIN. BREAKING STRENGTH LB (a)	THREAD B UN-3A UNF-3A	ØA	ØA <sub>s</sub>	B <sub>1</sub> ±.063	ØC		D	E +.000 -.010
DASH NOM (SIZE)	ØF	H	L ±.016						ØC	ØC		
MS21259-2RH	.188	.031	2.473	2.65	.078	.160	.138	1.042	.121	+.017	.188	.156
MS21259-3RH	.250	.031	2.879	3.00	.109	.218	.190	1.261	.169	+.021	.250	.187
MS21259-4RH	.313	.031	3.333	3.59	.141	.250	.219	1.511	.226	+.024	.313	.250
MS21259-5RH	.375	.031	3.627	3.97	.172	.297	.250	1.761	.285	+.028	.375	.312
MS21259-6RH	.438	.031	4.002	4.17	.203	.427	.375	2.261	.347	+.005	.438	.375
MS21259-7RH	.500	.031	4.516	4.81	.234	.494	.438	2.511	.405		.500	.438
MS21259-8RH	.562	.031	4.937	5.24	.265	.563	.500	2.761	.467		.625	.563
MS21259-9RH	.625	.031	5.391	5.75	.297	.635	.563	3.011	.529		.688	.625
MS21259-10RH	.688	.031	5.844	6.27	.328	.703	.625	3.511	.592		.750	.688
MS21259-11RH	.750	.031	6.656	7.06	.390	.781	.688	4.011	.592	+.033	.812	.750
MS21259-12RH	.812	.031	7.437	7.91	.468	.844	.750	4.698	.717	+.005	1.000	.875
MS21259-13RH	.875	.031	8.187	8.75	.531	.884	.812	5.011	.842		1.125	1.000
MS21259-14RH	.938	.031	9.125	9.72	.594	.984	1.000	5.511			1.437	1.125
MS21259-15RH	1.000	.031	10.375	11.06	.656	1.109	1.000	6.000			1.875	1.625
MS21259-16RH	1.125	.031	12.063	12.64	.781	1.359	1.250	6.511				
MS21259-17RH	1.250	.031	13.226	13.99	.921	1.593	1.437	7.166				
MS21259-18RH	1.375	.031	14.969	15.88	1.046	1.812	1.625	8.229				
MS21259-19RH	1.500	.031										
MS21259-20RH	1.625	.031										
MS21259-21RH	1.750	.031										
MS21259-22RH	1.875	.031										
MS21259-23RH	2.000	.031										
MS21259-24RH	2.125	.031										
MS21259-25RH	2.250	.031										
MS21259-26RH	2.375	.031										
MS21259-27RH	2.500	.031										
MS21259-28RH	2.625	.031										
MS21259-29RH	2.750	.031										
MS21259-30RH	2.875	.031										
MS21259-31RH	3.000	.031										
MS21259-32RH	3.125	.031										
MS21259-33RH	3.250	.031										
MS21259-34RH	3.375	.031										
MS21259-35RH	3.500	.031										
MS21259-36RH	3.625	.031										
MS21259-37RH	3.750	.031										
MS21259-38RH	3.875	.031										
MS21259-39RH	4.000	.031										
MS21259-40RH	4.125	.031										
MS21259-41RH	4.250	.031										
MS21259-42RH	4.375	.031										
MS21259-43RH	4.500	.031										
MS21259-44RH	4.625	.031										
MS21259-45RH	4.750	.031										
MS21259-46RH	4.875	.031										
MS21259-47RH	5.000	.031										
MS21259-48RH	5.125	.031										
MS21259-49RH	5.250	.031										
MS21259-50RH	5.375	.031										
MS21259-51RH	5.500	.031										
MS21259-52RH	5.625	.031										
MS21259-53RH	5.750	.031										
MS21259-54RH	5.875	.031										
MS21259-55RH	6.000	.031										
MS21259-56RH	6.125	.031										
MS21259-57RH	6.250	.031										
MS21259-58RH	6.375	.031										
MS21259-59RH	6.500	.031										
MS21259-60RH	6.625	.031										
MS21259-61RH	6.750	.031										
MS21259-62RH	6.875	.031										
MS21259-63RH	7.000	.031										
MS21259-64RH	7.125	.031										
MS21259-65RH	7.250	.031										
MS21259-66RH	7.375	.031										
MS21259-67RH	7.500	.031										
MS21259-68RH	7.625	.031										
MS21259-69RH	7.750	.031										
MS21259-70RH	7.875	.031										
MS21259-71RH	8.000	.031										
MS21259-72RH	8.125	.031										
MS21259-73RH	8.250	.031										
MS21259-74RH	8.375	.031										
MS21259-75RH	8.500	.031										
MS21259-76RH	8.625	.031										
MS21259-77RH	8.750	.031										
MS21259-78RH	8.875	.031										
MS21259-79RH	9.000	.031										
MS21259-80RH	9.125	.031										
MS21259-81RH	9.250	.031										
MS21259-82RH	9.375	.031										
MS21259-83RH	9.500	.031										
MS21259-84RH	9.625	.031										
MS21259-85RH	9.750	.031										
MS21259-86RH	9.875	.031										
MS21259-87RH	10.000	.031										
MS21259-88RH	10.125	.031										
MS21259-89RH	10.250	.031										
MS21259-90RH	10.375	.031										
MS21259-91RH	10.500	.031										
MS21259-92RH	10.625	.031										
MS21259-93RH	10.750	.031										
MS21259-94RH	10.875	.031										
MS21259-95RH	11.000	.031										
MS21259-96RH	11.125	.031										
MS21259-97RH	11.250	.031										
MS21259-98RH	11.375	.031										
MS21259-99RH	11.500	.031										
MS21259-100RH	11.625	.031										

DASH NOM (SIZE)	ØF	H	L ±.016	L <sub>B</sub> REF	ØM	ØN	P	S +.062 -.000	ØT	ØU	ØV +.00 5 -.000	W +/- .016	X MIN	Y +.063 -.000	Z MIN	ØBB
-2	.188	.031	2.473	2.65	.090	.078	1.042	.969	.138	.094	.063	1.174	.70	1.045		
-3	.250	.031	2.879	3.00	.119	.109	1.261	1.188	.190	.094	.063	1.411	.80	1.204		
-4	.313	.031	3.333	3.59	.154	.141	1.511	1.438	.219	.094	.063	1.682	1.05	1.376		
-5	.375	.031	3.627	3.97	.188	.172	1.761	1.688	.250	.094	.063	1.958	1.29	1.376		
-6	.438	.031	4.002	4.17	.223	.203	2.011	1.938	.313	.094	.063	2.237	1.31	1.453		.008
-7	.500	.031	4.516	4.81	.257	.234	2.261	2.188	.375	.094	.063	2.518	1.55	1.625		.016 FTM
-8	.562	.031	4.937	5.24	.291	.265	2.511	2.438	.438	.094	.063	2.784	1.70	1.750		
-9	.625	.031	5.391	5.75	.326	.297	2.761	2.688	.500	.094	.063	3.076	1.89	1.875		
-10	.688	.031	5.844	6.27	.360	.328	3.011	2.938	.563	.094	.063	3.326	2.06	2.000		
-12	.750	.031	6.656	7.06	.430	.390	3.511	3.438	.625	.094	.063	3.828	3.12	2.250		
-14	.812	.031	7.437	7.91	.514	.468	4.011	3.938	.688	.094	.063	4.375	3.57	2.500		.010
-16	.875	.031	8.187	8.75	.584	.531	4.698	4.625	.750	.094	.063	5.093	4.31			.020 FTM
-18	1.000	.031	9.125	9.72	.653	.594	5.011	4.938	.875	.094	.063	5.468	4.51	3.000		
-20	1.125	.031	10.375	11.06	.722	.656	5.511	5.438	1.000	.094	.063	6.093	5.04	3.500		.015
-24	1.438	.031	12.063	12.64	.860	.781	6.511	6.438	1.250	.094	.063	7.188	5.80	4.000		.030 FTM
-28	1.625	.031	13.226	13.99	1.013	.921	7.166	7.094	1.437	.094	.063	7.846	6.31	4.500		.020
-32	1.812	.031	14.969	15.88	1.151	1.046	8.229	8.156	1.625	.094	.063	9.000	7.26	5.000		.040 FTM

(a) TO ACHIEVE THE MINIMUM BREAKING STRENGTH, FOR THE TERMINAL TEST ONLY, A GALVANIZED CARBON STEEL WIRE ROPE SHALL BE USED.

## MS21259E

## REQUIREMENTS:

1. Material: Steel, corrosion resistant, steel 303Se (UNS S30323) or 304 (UNS S30400).
2. Finish: In accordance with MIL-DTL-781.
3. Threads: Threads in accordance with FED-STD-H28/20.
4. Swage: In accordance with specification MIL-DTL-6117
5. Tolerance: Unless otherwise specified, tolerances: decimals  $\pm .010$ , angles  $\pm 3^\circ$ .

## NOTES:

1. Dimensions are in inches
2. Remove all burrs and sharp edges.
3. Interpret drawing in accordance with ASME Y14.5M.
4. These terminals are not to be used with turnbuckle barrels.
5. In the event of a conflict between the text of this document and the references cited herein the text of this document takes precedence.
6. Unless otherwise specified, issues of referenced documents are those in effect at the time of solicitation.
7. Interchangeability relationship: MS21259 parts can universally replace the canceled AN666 parts identified by the same dash number; but the canceled AN666 parts cannot replace the superseding MS21259 parts. MS21259 corrosion resistant steel parts can universally replace the canceled carbon and alloy steel parts identified by the same dash number.

## MILITARY INTEREST

Custodians:  
Army - AR  
Navy - AS  
Air Force - 99

Preparing Activity:  
DLA-IS  
(Project 4030-0277)

Review activities:  
Navy - MC