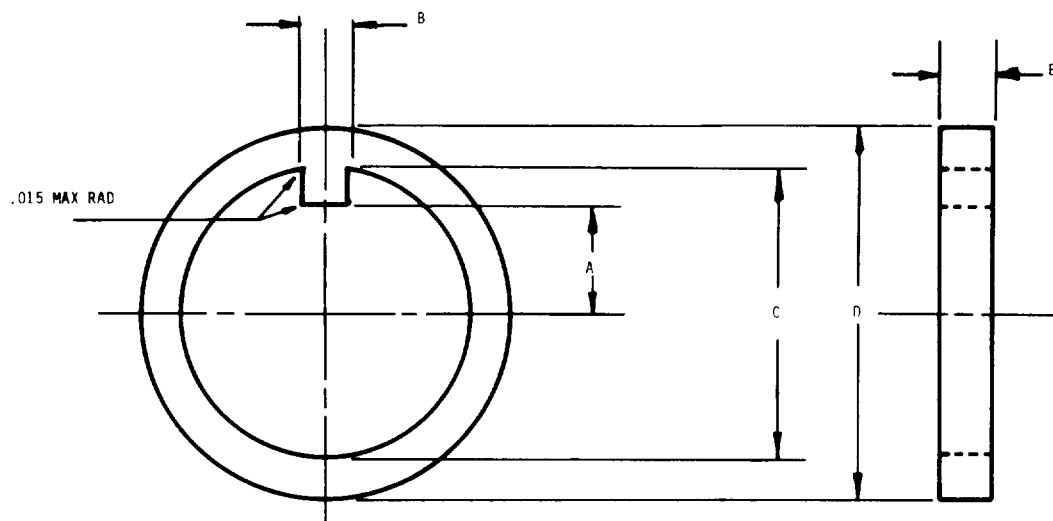


FED. SUP CLASS

5310

A



DASH NO.	A +.005	B +.010	C +.005 DIA.	D +.030 DIA.	E +.005
-15	.393	.125	.949	1.375	.093
-16	.424	.156	1.010	1.500	.125
-20	.546		1.260	1.750	
-23	.635		1.445	1.875	
-24	.670		1.515		
-28	.755	.219	1.760	2.250	.187
-31	.850		1.950	2.375	
-32	.880		2.010	2.625	
-39	1.105		2.450	3.062	
-47	1.307	.281	2.948	3.688	.187
-55	1.557		3.448	4.750	
-71	2.057		4.450	5.375	

A

MATERIAL: STEEL, ASTM A575, A663, A576, A675, A108, F51018, 1020, OR 1025

FINISH: CADMIUM PLATE, QQ-P-416, TYPE II, CLASS 3, OR ZINC PLATE ASTM B633, TYPE II CLASS SC3.

REMOVE ALL BURRS.

DIMENSIONS IN INCHES.

ADD C IN PLACE OF DASH TO INDICATE CADMIUM PLATE.

ADD Z IN PLACE OF DASH TO INDICATE ZINC PLATE.

EXAMPLE OF PART NOS. MS21258C15 = WASHER, KEY, RETAINING, WHEEL BEARING, CADMIUM PLATED.

MS21258Z15 = WASHER, KEY, RETAINING, WHEEL BEARING, ZINC PLATED.

INTERCHANGEABILITY RELATION WITH AN7503 WASHERS: MS21258 WASHERS AND AN7503 WASHERS OF LIKE DASH NUMBERS ARE UNIVERSALLY, FUNCTIONALLY AND DIMENSIONALLY INTERCHANGEABLE.

THIS STANDARD TAKES PRECEDENCE OVER DOCUMENTS REFERENCED HEREIN.

REFERENCED DOCUMENTS SHALL BE OF THE ISSUE IN EFFECT ON DATE OF INVITATIONS FOR BID.

28 December 1984

A

REVISED

APPROVED 7 APRIL 60

P. A. AIR FORCE 82 Other Cust	INTERNATIONAL INTEREST	TITLE <b>WASHER, KEY, RETAINING, WHEEL BEARING.</b>	MILITARY STANDARD <b>MS 21258</b>
PROCUREMENT SPECIFICATION NONE	SUPERSEDES: AN7503	SHEET 1 OF 1	