

INCH-POUND

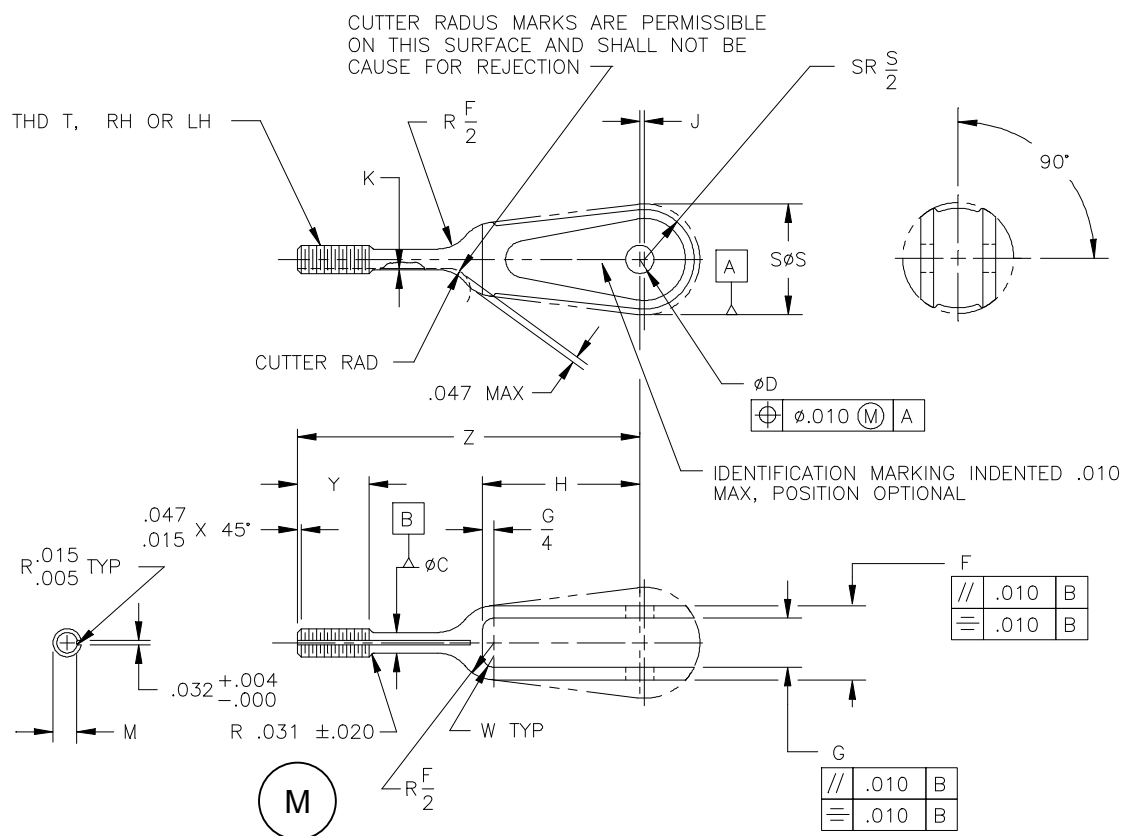
MS21253M
 30 October 1999
 SUPERSEDING
 MS21253L
 22 FEBRUARY 1999

MILITARY SPECIFICATION SHEET

CLEVIS END, TURNBUCKLE, CLIP LOCKING, (FOR BEARING)

This specification sheet is approved for use by all Departments and Agencies of the Department of Defense.

The requirements for acquiring the product described herein shall consist of this specification sheet and the issue of the following specification listed in that issue of the



Department of Defense Index of Specifications and Standards (DoDISS) specified in the solicitation: MIL-DTL-8878.

(M) Denotes change(s)

MS21253M


M
Table I. Dash numbers and dimensions.

DASH NO. DIRECTION OF THREAD		WIRE ROPE DIA REF		MIN BREA KING STRE NGTH LB	MATCHES BEARING NO. REF	THREAD T UNF-3A	ØC +.00 0 -.006	ØD +.002 0 -.000	F +.01 0 -.005	G ±.005	H	J +.01 0 -.000	K MAX	M		SØS +.12 5 -.110	W RAD	Y ±.04 7	Z ±.031
RH	LH	NOM REF	MIN											MAX	MIN				
- 3RS	-3LS	3/32	.093	1600	MS27640- KP3	.1900 (#10)-32	.139	.190	.500	.312	1.06 2	.031	.007 7	.1638	.156 8	.750	.156	.500	2.312
- 3RL	-3LL																		3.187
- 4RS	-4LS	1/8	.125										.010 3	.2224	.215 2			.625	2.562
- 4RL	-4LL			2200	MS27640- KP4	.2500 (1/4)-28	.195	.250	.750	.500	1.18 8								3.437
- 5RS	-5LS	5/32	.156	3200		.3125 (5/16)-24						.047				.875			2.687
- 5RL	-5LL																.188		3.562
- 6RS	-6LS	3/16	.187	4600	MS27640-KP5		.249	.313	.813	.563	1.31 3		.006 4	.2830	.275 4			.750	2.750
- 6RL	-6LL															1.00 0			3.625

REQUIREMENTS:

1. Material: 17-4PH stainless steel in accordance with AMS 5643 or ASTM A564. Steel, carbon or alloy in accordance with MIL-DTL-8878.
2. Protective treatment: None for 17-4PH. Cadmium plate, QQ-P-416, Type II, Class 2 for carbon steel or alloy steel..
3. Heat treatment: Steel, carbon or alloy shall be heat treated to 125 to 145 KSI in accordance with MIL-H-6875. 17-4PH shall be in accordance with MIL-DTL-8878.
4. Finish: Finish in accordance with MIL-DTL-8878.
5. Threads: Threads shall be in accordance with FED-STD-H28/20.
6. Tolerances: Unless otherwise specified, tolerance: decimals $\pm .010$, angles $\pm .5^\circ$.
7. The OD of the "J" dimension may be a flat area.
8. Part number: Part Identifying Number (PIN) shall consist of the basic MS number, followed by a dash number; C in lieu of dash indicates 17-4PH (dash indicates carbon or alloy steel); first letter following dash number or letter C indicates direction of thread (left or right hand), second letter following dash number indicates length (short or long).

Example of part number: MS21253C3LS- clevis end, 17-4PH, .1900 (#10)-32 left hand thread, short.
MS21253-3RL- clevis end, steel, .1900 (#10)-32 right hand thread, long.

MS21253M

NOTES:

1. Remove all burrs and sharp edges. (see procurement specification for definition).
2. Dimensions in inches.
3. Interpret drawing in accordance with ASME Y14.5M.
4. Steel, Carbon and Alloy clevis end turnbuckles are inactive for new design. 17-4PH stainless clevis end turnbuckles shall be used for new design and can be used to replace comparable steel parts..
5. In the event of a conflict between the text of this document and the references cited herein the text of this document takes precedence.
6. Unless otherwise specified, issues of referenced documents are those in effect at the time of solicitation.
7. MS33736 for locking clip.

MILITARY INTEREST

Custodians:

Army - AV
Navy - AS
Air Force - 99

Review activities:

Air force – 82



Preparing activity:
DLA - GS

(Project 1560-0257)