

INCH-POUND

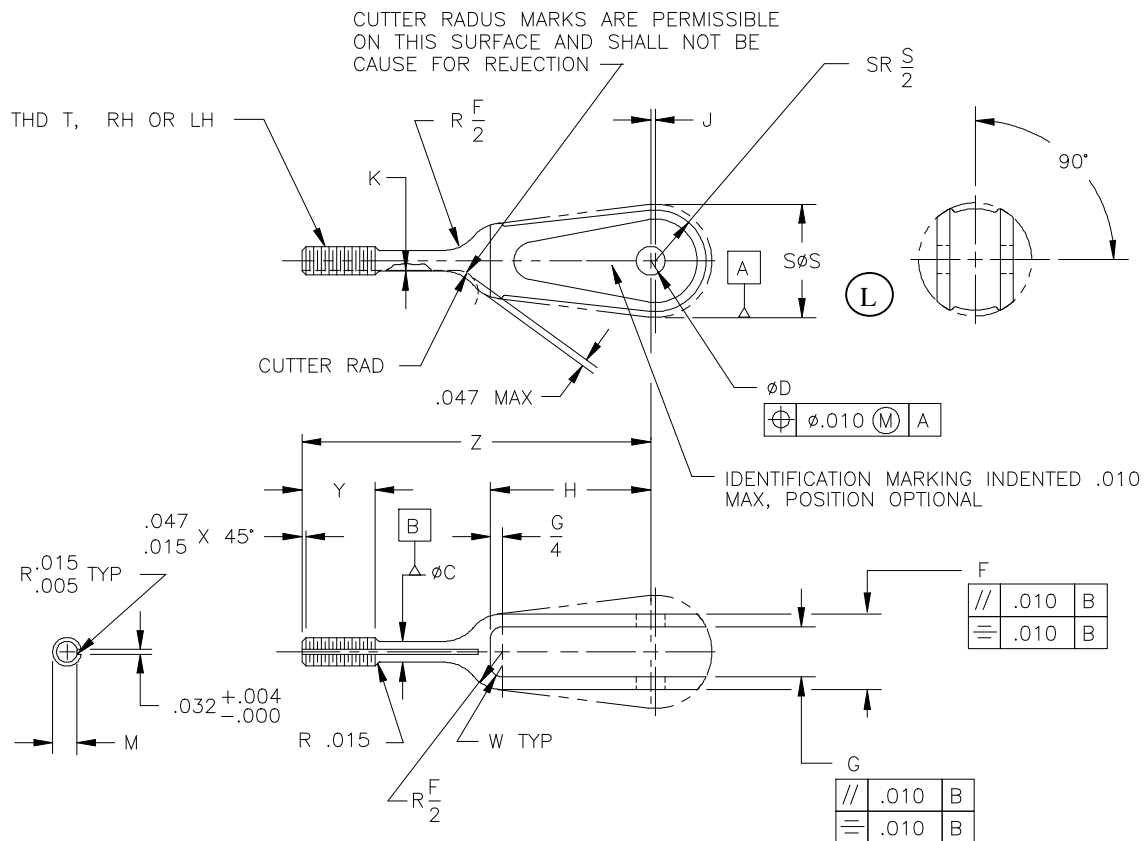
MS21253L
22 FEBRUARY 1999
 SUPERSEDING
 MS21253K
 15 AUGUST 1997

MILITARY SPECIFICATION SHEET

CLEVIS END, TURNBUCKLE, CLIP LOCKING, (FOR BEARING)

This specification sheet is approved for use by all Departments and Agencies of the Department of Defense.

The requirements for acquiring the product described herein shall consist of this specification sheet and the issue of the following specification listed in that issue of the Department of Defense Index of Specifications and Standards (DoDISS) specified in the



solicitation: MIL-DTL-8878.

(L) Denotes change(s)

MS21253L

Table I. Dash numbers and dimensions.

| DASH NO. DIRECTION OF THREAD | | WIRE ROPE DIA REF | MIN BREAKING STRENGTH LB | MATCHES BEARING NO. REF | THREAD T UNF-3A | ØC +.000 -.006 | ØD +.002 -.000 | F +.010 -.005 | G ±.005 | H | J +.010 -.000 | K MAX | M | | SØS +.125 -.110 | W RAD | Y ±.047 | Z ±.031 |
|------------------------------------|------|---------------------------------|-----------------------------------|----------------------------------|---|----------------------|----------------------|---------------------|------------|-------|---------------------|----------|-------|-------|-----------------------|----------|------------|------------|
| RH | LH | | | | | | | | | | | | MAX | MIN | | | | |
| -3RS | -3LS | .093 (3/32) | 1600 | MS27640- KP3 | .1900 (#10)-32 | .139 | .190 | .500 | .312 | 1.062 | .031 | .0077 | .1638 | .1568 | .750 | .156 | .500 | 2.312 |
| -3RL | -3LL | | | | | | | | | | | | | | | | | |
| -4RS | -4LS | .125 (1/8) .156 (5/32) | 2200 3200 | MS27640- KP4 | .2500 (1/4)-28 .3125 (5/16)-24 | .195 | .250 | .750 | .500 | 1.188 | .047 | .0103 | .2224 | .2152 | .875 | .188 | .625 | 2.562 |
| -4RL | -4LL | | | | | | | | | | | | | | | | | |
| -5RS | -5LS | | | | | | | | | | | | | | | | | |
| -5RL | -5LL | | | | | | | | | | | | | | | | | |
| -6RS | -6LS | .187 (3/16) | 4600 | MS27640- KP5 | .3125 (5/16)-24 | .249 | .313 | .813 | .563 | 1.313 | .0064 | .2830 | .2754 | 1.000 | .750 | .188 | .625 | 2.562 |
| -6RL | -6LL | | | | | | | | | | | | | | | | | |

REQUIREMENTS:

- ① 1. Material: 17-4PH stainless steel in accordance with AMS 5643 or ASTM A564. Steel, carbon or alloy in accordance with MIL-DTL-8878.
2. Protective treatment: None for 17-4PH. Cadmium plate, QQ-P-416, Type II, Class 2 for carbon steel or alloy steel..
3. Heat treatment: Steel, carbon or alloy shall be heat treated to 125 to 145 KSI in accordance with MIL-H-6875. 17-4PH shall be in accordance with MIL-DTL-8878.
4. Finish: Finish in accordance with MIL-DTL-8878.
5. Threads: Threads shall be in accordance with FED-STD-H28/20.
6. Tolerances: Unless otherwise specified, tolerance: decimals ± .010, angles ±.5°.
7. The OD of the “J” dimension may be a flat area.
8. Part number: Part Identifying Number (PIN) shall consist of the basic MS number, followed by a dash number; C in lieu of dash indicates 17-4PH (dash indicates carbon or alloy steel); first letter following dash number or letter C indicates direction of thread (left or right hand), second letter following dash number indicates length (short or long).

Example of part number: MS21253C3LS- clevis end, 17-4PH, .1900 (#10)-32 left hand thread, short.
MS21253-3RL- clevis end, steel, .1900 (#10)-32 right hand thread, long.

MS21253L

NOTES:

1. Remove all burrs and sharp edges. (Burrs in thread area which do not interfere are acceptable).
2. Dimensions in inches.
3. Interpret drawing in accordance with ASME Y14.5M.
4. Steel, Carbon and Alloy clevis end turnbuckles are inactive for new design. 17-4PH stainless clevis end turnbuckles shall be used for new design and can be used to replace comparable steel parts..
5. In the event of a conflict between the text of this document and the references cited herein the text of this document takes precedence.
6. Unless otherwise specified, issues of referenced documents are those in effect at the time of solicitation.
7. MS33736 for locking clip.

MILITARY INTEREST

Custodians:

Army - AV
Navy - AS
Air Force - 99

Review activities:

Air force – 82
DLA - IS

Ⓛ

Preparing activity:
DLA - GS

(Project 1560-0243)

Ⓛ