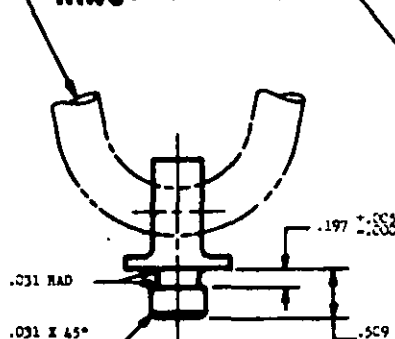


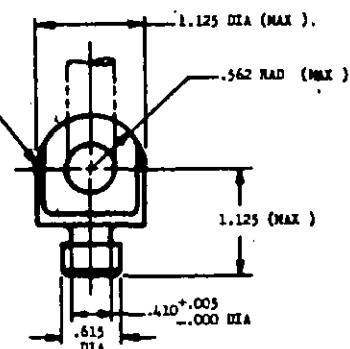
FOR CLASS
1670

RING (SEE DETAILS A & B)



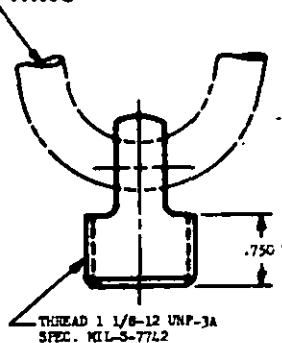
STUD

SHAPE OF TOP OPTIONAL WITHIN DIMENSIONS SHOWN



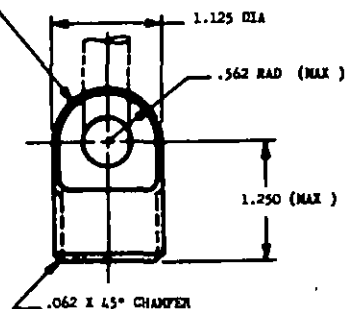
-1 CARGO RING

RING (SEE DETAILS A & B)



STUD

SHAPE OF TOP OPTIONAL WITHIN DIMENSIONS SHOWN



-2 CARGO RING

MATERIAL: SEE PROCUREMENT SPECIFICATION.

HEAT TREAT: SEE PROCUREMENT SPECIFICATION.

REMOVE ALL BURRS AND SHARP EDGES.

DIMENSIONS IN INCHES, UNLESS OTHERWISE SPECIFIED, TOLERANCES: FRACTIONS $\pm 1/64$, DECIMALS, $\pm .005$, ANGLES $\pm 1/2^\circ$.

FOR DESIGN FEATURE PURPOSES, THIS STANDARD TAKES PRECEDENCE OVER PROCUREMENT DOCUMENTS REFERENCED HEREIN.

REFERENCED DOCUMENTS SHALL BE OF THE ISSUE IN EFFECT ON DATE OF INVITATIONS FOR BID.

This military standard has been approved by the Department of Defense and is mandatory for use by all Departments and Agencies of the Department of Defense. Solicitation for all new engineering and design applications and for repetitive use shall be made from this document.

MIL-STD-21236
APR 67
MIL-STD

See additional

NAVY - 45 ARMY - 45	TITLE RING, CARGO TIEDOWN (10,000 LB), TYPE III	MILITARY STANDARD MS21236
NAVY - 45 ARMY - 45 MIL-STD-21236	SHEET 1 OF 2	SHEET 1 OF 2

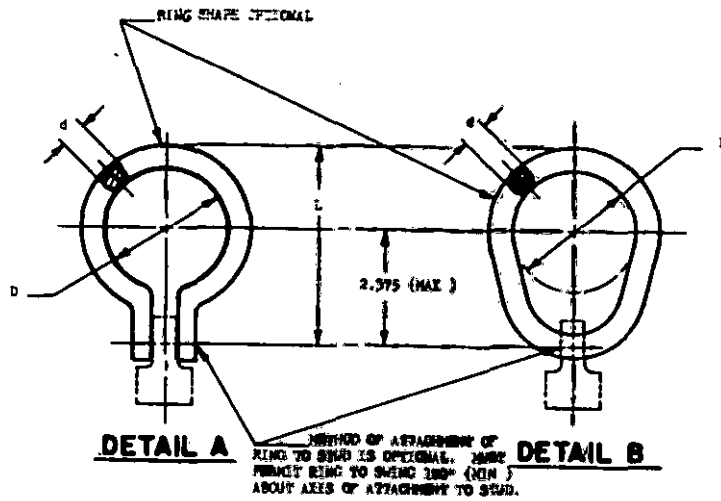
DD FORM 672-1 (Obsolescence)

REVISIONS SHOWN ON THIS PAGE ARE INDICATED BY

APPROVED 1 DEC 67 REVISED

PBB. SUP. CLASS

1670



CARGO RING DIMENSIONS (INCHES)

D (MIN)	d (MAX)	L (MAX)
2.500	.500	3.750

New additions:

Revised additions:
 MIL-A-8925
 AMS-2100
 MIL-A-8925

This military standard has been approved by the Department of Defense and is mandatory for use by all Departments and Agencies of the Department of Defense. Selection for all new engineering and design applications and for repetitive use shall be made from this document.

APPROVED 1 DEC 67 REVISED

P.A. NAVY - AS	TITLE	MILITARY STANDARD
Other Code	RING, CARGO TIEDOWN (10, 12), TYPE III	MS21236
ARMY - G1 USAF - 11	SUPERSEDES	SHEET 1 OF 1
PROCUREMENT SPECIFICATION MIL-A-8925		

DD FORM 672-1 (Coordinated)

PREVIOUS EDITIONS OF THIS FORM ARE OBSOLETE.