

FED. SUP CLASS  
1679

BASE PLATE

CLEAR AREA 1.25" DIA (MIN)  
CONCENTRIC WITH STUD FOR USE  
WITH MS22-36.CARGO RING  
(SEE DETAIL A, SHEET 2).265 DIA  
(8 HOLES)

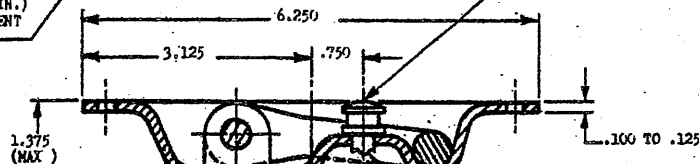
55°

2.187 RAD

2.500 RAD

METHOD OF ATTACHMENT  
OF RING TO STUD IS  
OPTIONAL. MUST PERMIT  
RING TO SWING 180° (MIN.)  
ABOUT AXIS OF ATTACHMENT  
TO STUD.

STUD (SEE DETAIL B, SHEET 2)

METHOD OF RING ATTACHMENT AT THIS  
POINT OPTIONAL BUT MUST PERMIT RING  
TO SWIVEL THROUGH 360°.

STUD MAY BE SECURED BY ANY SUITABLE MEANS.

MATERIAL: SEE PROCUREMENT SPECIFICATION.

HEAT TREAT: SEE PROCUREMENT SPECIFICATION.

REMOVE ALL BURRS AND SHARP EDGES.

DIMENSIONS IN INCHES. UNLESS OTHERWISE SPECIFIED, TOLERANCES: FRACTIONS  $\pm 1/64$ , DECIMALS  $\pm .005$ , ANGLES  $\pm 1/2^\circ$ .

FOR DESIGN FEATURE PURPOSED, THIS STANDARD TAKES PRECEDENCE OVER PROCUREMENT DOCUMENTS REFERENCED HEREIN.

REFERENCED DOCUMENTS SHALL BE OF THE ISSUE IN EFFECT ON DATE OF INVITATIONS FOR BID.

This military standard has been approved by the Department of Defense and is mandatory for use by all Departments and Agencies of the Department of Defense. Selection for all new engineering and design applications and for repetitive use shall be made from this document.

User activities:

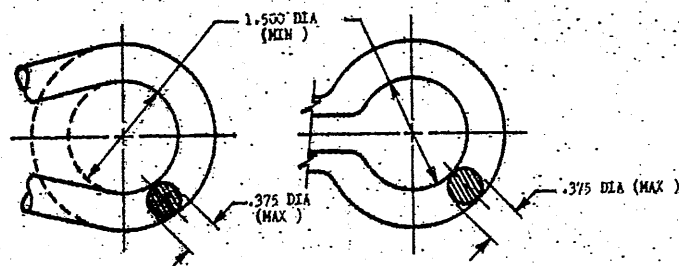
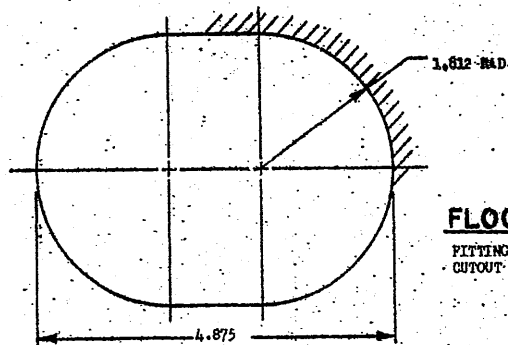
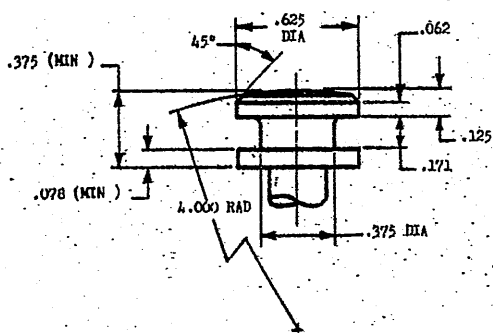
Review activities:  
USAF-11-0  
ARMY-11-0  
NAVY-11-0

P.A. NAVY - AS	TITLE	MILITARY STANDARD
Other Code	FITTING, TIEDOWN, CARGO RING (10,000 LB) AND SEAT STUD, TYPE II	MS 21235
ARMY - GL USAF - 11		
PROCUREMENT SPECIFICATION MIL-A-8905	SUPERSEDES:	SHEET 1 OF 2

DD FORM 672-1 (Coordinated)

PREVIOUS EDITIONS OF THIS FORM ARE OBSOLETE.

APPROVED 1 Dec 67 REVISED

FED. SUP CLASS  
1670**DETAIL A** (ALLOWABLE RING ENVELOPE)**FLOOR CUTOUT**FITTING MUST INSTALL INTO FLOOR  
CUTOUT SHOWN ABOVE WITHOUT INTERFERENCE.**DETAIL B**  
(ENLARGED)

Form 672-1

Series 672-1

This military standard has been approved by the Department of Defense and is mandatory for use by all Departments and Agencies of the Department of Defense. Selection for all new engineering and design applications and for repetitive use shall be made from this document.

P.A. NAVY - AS

Other Code

ARMY - GL  
USAF - 11PROCUREMENT SPECIFICATION  
MIL-A-8905

TITLE

FITTING, TIEDOWN, CARGO RING (10,000 LB) AND SEAT STUD, TYPE II

SUPERSEDES:

MILITARY STANDARD

**MS 21235**

SHEET 2 OF 2

DD FORM 672-1 (Coordinated)

PREVIOUS EDITIONS OF THIS FORM ARE OBSOLETE.

U.S. GOVERNMENT PRINTING OFFICE: 1964-341-518/7195

APPROVED 1 DEC 67 REVISED