

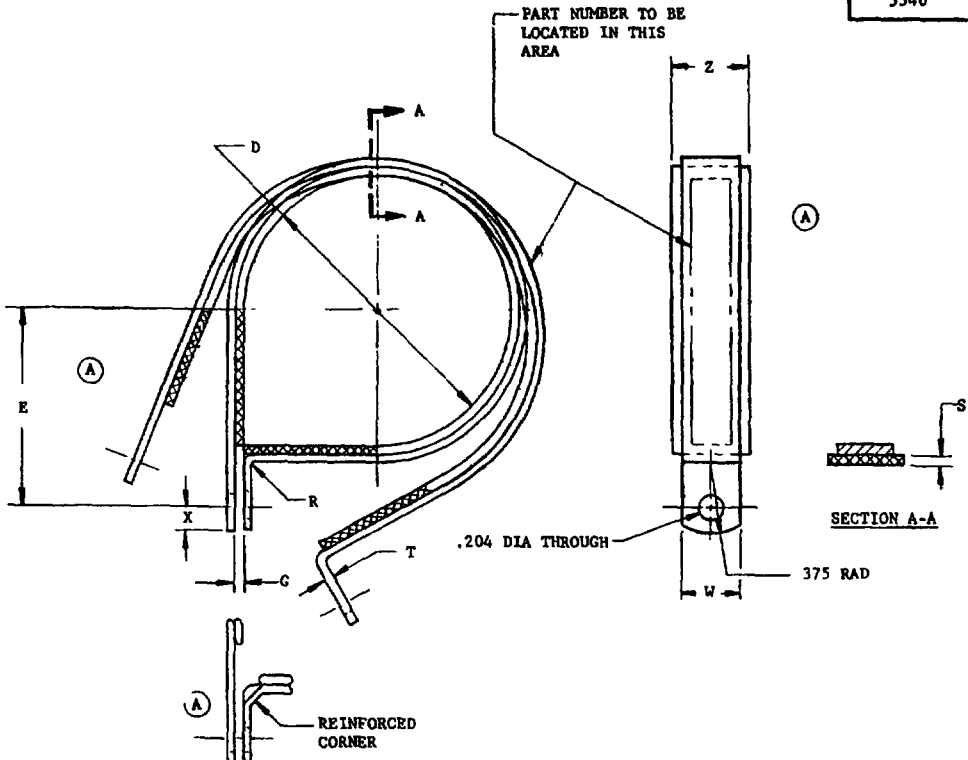
USER SYMBOLS:

REVIEWER SYMBOLS:

NAVY - AS
USAF - 82
ARMY - AV

"Replaces/uses information is current as of the date of this document
For future coordination of changes to this document, draft circulation
should be based on the information in the current DDG133."

This military standard is mandatory for use by all Departments
& Agencies of the Department of Defense. Selection for all new
engineering and design applications and for repetition use shall
be made from this document.



NOTES

- (A) 1. CLAMP BAND CORROSION RESISTANT STEEL, COMPOSITION TYPE T1 OR Cb, PER MIL-S-6721, ANNEALED.
CUSHION CORROSION RESISTANT STEEL, TYPE 321 OR 347 PER MIL-S-6721
2. PROTECTIVE TREATMENT PASSIVATE PER QQ-P-35
3. REMOVE ALL BURRS AND SHARP EDGES
4. DIMENSIONS IN INCHES UNLESS OTHERWISE SPECIFIED, TOLERANCES DECIMALS $\pm .015$.
5. DIMENSION D IS APPLICABLE IN CLOSED POSITION ONLY.
6. EXAMPLE OF PART NUMBER MS21106-8 - CUSHION CLAMP, CRES, 500 ID, 1200°F.
7. THE MS PART NUMBER, INCLUDING DASH NUMBER, AND MANUFACTURER'S IDENTIFICATION, SHALL BE MARKED ON EACH CLAMP.
8. CLAMPS SHALL BE FURNISHED IN THE OPEN POSITION.
9. METHOD OF CUSHION ATTACHMENT TO BAND IS OPTIONAL
- (A) 10. REINFORCED CORNER IS MANDATORY

FOR DESIGN FEATURE PURPOSES, THIS STANDARD TAKES PRECEDENCE OVER PROCUREMENT DOCUMENTS REFERENCED HEREIN.
REFERENCED DOCUMENTS SHALL BE OF THE ISSUE IN EFFECT ON DATE OF INVITATIONS FOR BID.

(A) FOR CHANGES SEE SHEETS 1 AND 2

P.A. NAVY - AS Other Cust USAF - 82 ARMY - AV	TITLE CLAMP, LOOP, CUSHIONED, 1200°F, CRES TYPE IV, CLASS B	MILITARY STANDARD	
		MS21106	
PROCUREMENT SPECIFICATION MIL-C-8956	SUPERSEDES MS21106(ASG)	SHEET	1 OF 2

DD FORM 672-1 (Coordinated)

PREVIOUS EDITIONS OF THIS FORM ARE OBSOLETE

PLATE NO. 15320

APPROVED 1 JUL 67 REVISED (A) 2 DEC 1970

USER SYMBOLS:

REVIEWER SYMBOLS:

NAVY - AS
USAF - 82
ARMY - AV

"Review/user information is current as of the date of this document.
For future coordination of changes to this document, draft elimination
should be based on the information in the current DDSS."

This military standard is mandatory for use by all Departments
& Agencies of the Department of Defense. Selection for all new
engineering and design applications and for repetitive use shall
be made from this document.

FED SUP CLASS
5340

DASH NUMBERS	RIGID TUBE NOMINAL OD (REF)	DIMENSIONS								
		D ±.015 DIA	E ±.015	G	R ±.016 RAD	S ±.016 -.000	T	W ±.015	X ± .015	Z MAX
-2	1/8	.125	.457	.062 +.016 -.000	.062					
-3	3/16	.188	.498							
-4	1/4	.250	.529							
-5	5/16	.313	.560							
-6	3/8	.375	.592							
-7	7/16	.438	.623							
-8	1/2	.500	.654							
-9	9/16	.563	.749							
-10	5/8	.625	.780							
-11	11/16	.688	.811							
-12	3/4	.750	.842							
-13	13/16	.813	.858							
-14	7/8	.875	.889							
-15	15/16	.938	.920							
-16	1	1.000	.951							
-17	1- 1/16	1.063	.983							
-18	1- 1/8	1.125	1.030	.094 +.031 -.000	.062	.0320 ± .0035				
-19	1- 3/16	1.188	1.061							
-20	1- 1/4	1.250	1.092							
-21	1- 5/16	1.313	1.124							
-22	1- 3/8	1.375	1.155							
-23	1- 7/16	1.438	1.186							
-24	1- 1/2	1.500	1.217							
-25	1- 9/16	1.563	1.259							
-26	1- 5/8	1.625	1.280							
-27		1.688	1.312							
-28	1- 3/4	1.750	1.342							
-29		1.813	1.374							
-30	1- 7/8	1.875	1.405							
-31		1.938	1.444							
-32	2	2.000	1.475							
-33		2.062	1.507							
-34	2- 1/8	2.125	1.538	125						
-35		2.188	1.570							
-36	2- 1/4	2.250	1.600							
-37		2.312	1.631							
-38	2- 3/8	2.375	1.663							
-40	2- 1/2	2.500	1.728							
-42		2.625	1.788							
-43		2.688	1.820							
-44	2- 3/4	2.750	1.851							
-45		2.812	1.882							
-46		2.875	1.913							
-48	3	3.000	1.976							
-50		3.125	2.038							
-52	3- 1/4	3.250	2.101							
-54		3.375	2.163							
-56	3- 1/2	3.500	2.226							
-58		3.625	2.288							
-64	4	4.000	2.476	.125 +.031 -.000		040 ± .004				
-66		4.125	2.538							

APPROVED 1 JULY 67 REVISED A FOR CHANGES SEE SHEETS 1 AND 2

P.A. NAVY - AS Other Cust USAF - 82 ARMY - AV	TITLE CLAMP, LOOP, CUSHIONED, 1200°F, CRES TYPE IV CLASS B	MILITARY STANDARD MS21106
PROCUREMENT SPECIFICATION MIL-C-8956	SUPERSEDES MS21106(ASG)	SHEET 2

DD FORM 672-1 (Coordinated)

PREVIOUS EDITIONS OF THIS FORM ARE OBSOLETE.

PLATE NO 15520