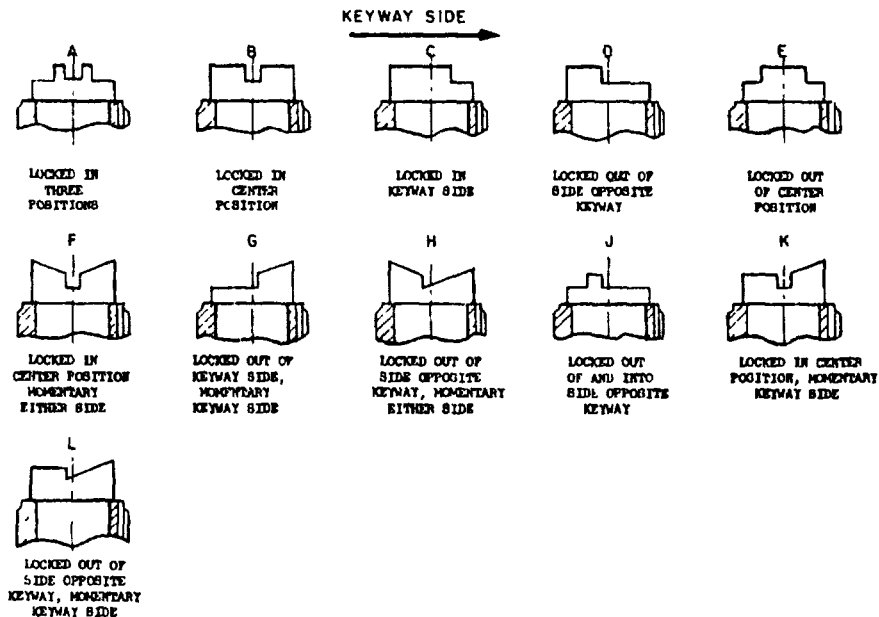
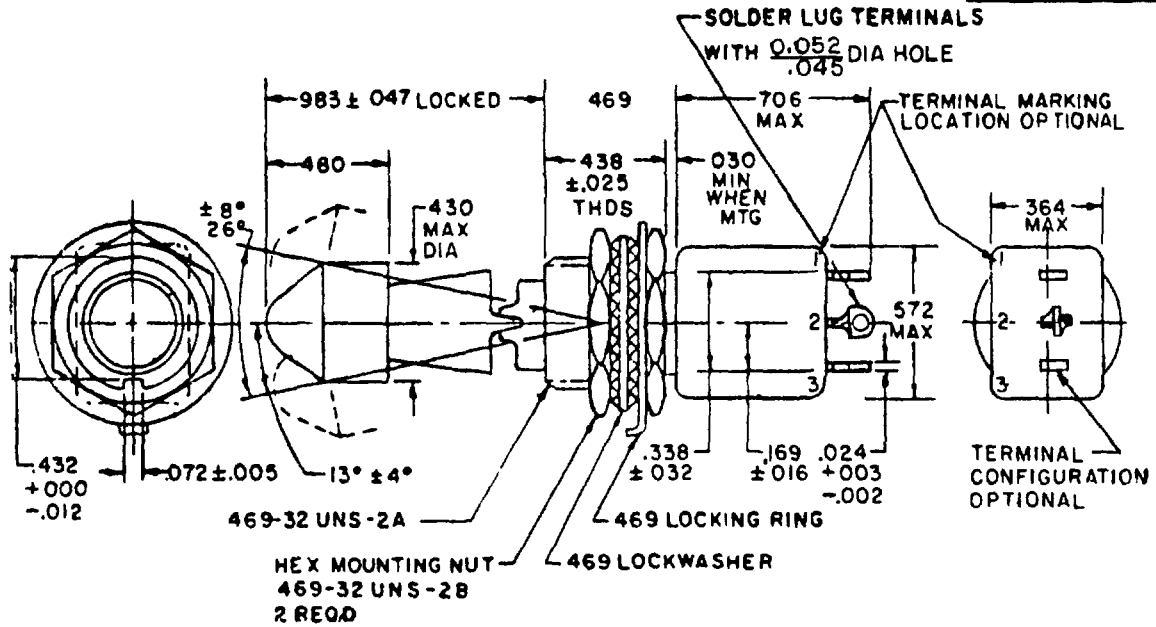


FED. SUP CLASS
5930

FIGURES A THRU L ILLUSTRATE THE LOCKING AND MOMENTARY CONFIGURATION AND NOT THE DETAIL CONSTRUCTION OF THE LOCKING DESIGN

(F) denotes change.

Army - AR, AV
Navy - C
Air Force - 17 on

Review activities

Army -
Navy -
Air Force -

Approved for use by all Departments and Agencies of the Department of Defense. Selection for all new engineering and design applications repetitive use shall be made from this document when applicable.

P A AF-85 Other Cust ARMY - ER NAVY - AS	International Interest ASCCAS 12/16A	TITLE SWITCH TOGGLE POSITIVE BREAK LEVER LOCK, MINIATURE TOGGLE SEALED SOLDER LUG SINGLE POLE 469 MOUNTING BUSHING	MILITARY STANDARD MS21026
--	---	--	------------------------------

APPROVED 13 Jun 66 REVISED (F) 18 OCT 1985

FED SUP CLASS

5930

DETAIL REQUIREMENTS

MS DASH NO	LOCKING COMB	CIRCUIT MADE BETWEEN TERMINALS AS INDICATED WITH THE TOGGLE LEVER IN THESE POSITIONS (a)			CURRENT CAPACITY IN AMPERES						LIFE LOW CURRENT LEVEL SWITCHING 5 mV
					RESISTIVE LOAD			INDUCTIVE LOAD			
					28 VOLTS DC	115 VOLTS 60 HERTZ AC	400 HERTZ AC	28 VOLTS DC	115 VOLTS 60 HERTZ AC	400 HERTZ AC	
		OPPOSITE KEYWAY SIDE (d)	CENTER POSITIONS	KEYWAY SIDE (d)							
-211	A, B, C, D, E	ON 2-3	OFF	ON 1-2	5	2	3	(b)	1	2	(c) 25 μA
-221	C, E		NONE	OFF							
-231	J, B		OFF	ON 1-2							
-241			OFF	NONE							
-271	F, H		MOM-ON 2-3	OFF							
-281	K	NONE									
-311	G, K, L	ON 2-3									

- (a) Direction of movement of internal mechanism is opposite to the direction of the toggle movement
 (b) With time constant of 0.20 ± 0.02 seconds
 (c) Contact resistance not to exceed 50 ohms during life, low current level switching
 (d) Non-functional terminals shall not be supplied

INCHES	MM	INCHES	MM	INCHES	MM	INCHES	MM	INCHES	MM
.002	05	.016	41	.045	11.4	.338	8.59	.469	11.91
.003	08	.024	61	.047	11.9	.364	9.25	.480	12.19
.005	13	.025	64	.052	13.2	.430	10.92	.572	14.53
.010	25	.030	76	.072	18.3	.432	10.97	.706	17.93
.012	30	.032	81	.169	42.9	.438	11.13	.983	24.97

F NOTES

- Dimensions are in inches
- Metric equivalents are given for general information only.
- Unless otherwise specified, tolerances are $\pm .010$ (0.25 mm) on decimals and $\pm 5^\circ$ on angles.
- For hardware detail specifications see appendix of MIL-S-8834
- In the event of a conflict between the text of this standard and the references cited herein, the text of this standard shall take precedence
- Referenced Government documents of the issue listed in that issue of the Department of Defense Index of Specifications and Standards (DoDISS) specified in the solicitation form a part of this standard to the extent specified herein
- Shock Method I and Method II (high impact). The switch shall be electrically and mechanically operative at the conclusion of the shock test except there can be mechanical transfer of the contact mechanism at all levels when tested in accordance with Method II (high impact)
- Toggle seal test Method II
- Part number shall consist of MS number, locking combination letter and dash number
- Example part number
 MS21026B211 - Toggle sealed, on-off-on, locked in center position
 MS21026K281 - Toggle sealed, none-off-momentary on, locked in center position
- Strength of terminals 5 pounds normal to the mounting plane and 2 pounds in other planes
- Altitude 50,000 feet
- 115 V ac, 60 hertz electrical endurance tests are to be performed at room temperature and pressure
- Maximum weight 0.593 pound (26.9 grams)
- Unlocking force 4 \pm 1 pound.
- Configuration of switch case housing, terminals and barriers Design optional providing maximum dimensions specified are not exceeded

P A AF - 85

International
Interest

TITLE
 SWITCH, TOGGLE, POSITIVE BREAK,
 LEVER LOCK, MINIATURE, TOGGLE
 SEALED, SOLDER LUG, SINGLE POLE,
 469 MOUNTING BUSHING

MILITARY STANDARD

Other Cust
 Army - ER
 Navy - AS

ASCCAS
 12/16A

MS21026

User activities
 Army - MI
 Navy -
 Air Force -

Review activities
 Army - AR, AV
 Navy - EC
 Air Force - 11, 17, 99

ry standard is approved for use by all Departments and Agencies of the
 of Defense Selection for all new engineering and design applications
 stitive use shall be made from this document when applicable

FOR CHANGE SEE PAGE 2

REVISED (F)

13 Jun 66

APPROVED