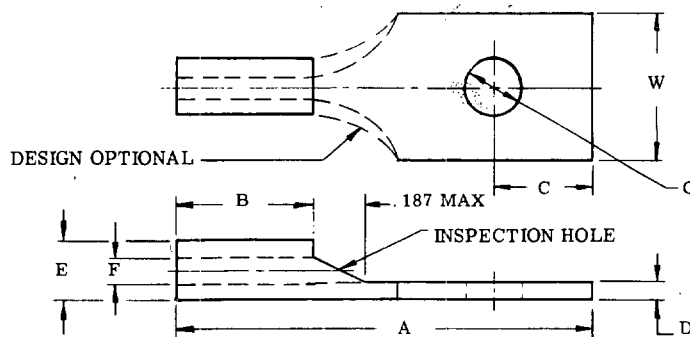


USER SYMBOLS:  
NAVY - MC

REVIEWER SYMBOLS:  
NAVY - SH, EC  
ARMY - AV  
USAF - 11

"Review/user information is current as of the date of this document.  
For future coordination of changes to this document, draft circulation  
should be based on the information in the current DODISS."

This military standard is approved for use by all Departments  
& Agencies of the Department of Defense. Selection for all new  
engineering and design applications and for repetitive use shall  
be made from this document.



FED. SUP CLASS  
5940

TABLE I														
DASH NO.	WIRE SIZE	STUD SIZE	A MAX	B MIN	C ±.010	D		E	F	G		W		MIL-T-16366 (SHIPS) REFERENCE
						MAX	MIN			MAX	MIN	MAX	MIN	
31		2 (.086)	.780	.240						.098	.090	.187	.177	
1		4 (.112)			.117					.122	.114	.228	.208	L-58, 1-2
2		5 (.125)	.841							.140	.128	.244	.224	L-57, 1-2
3		6 (.138)	.904	.187						.152	.142	.260	.240	L-59, 1-2
4			.966	.218										L-53, 1-2
5	22-18	8 (.164)	1.029	.250	.250	.048	.023	.165	.070	.178	.168			L-61, 1-2
6		10 (.190)						.110	.052	.203	.193	.322	.302	L-63, 1-2
7		12 (.216)			.328					.236	.220	.385	.365	L-64, 1-2
8			1.186								.447	.427		L-51, 1-2
9		1 (.250)								.275	.260	.478	.458	L-50, 1-2
10		8 (.164)	1.498	.281						.178	.168	.385	.365	L-52, 1-2
11		4 (.112)	.842	.117						.122	.114	.228	.208	L-58, 2-1/2-4
12		5 (.125)	.904							.140	.128	.244	.224	L-57, 2-1/2-4
13		6 (.138)	.967	.187						.152	.142	.260	.240	L-59, 2-1/2-4
14			1.029	.218										L-53, 2-1/2-4
15	16-14	8 (.164)	1.092	.250	.250	.060	.023	.192	.090	.178	.168	.322	.302	L-61, 2-1/2-4
16		10 (.190)						.139	.081	.203	.193			L-63, 2-1/2-4
17		12 (.216)	1.249	.328						.236	.220	.385	.365	L-64, 2-1/2-4
18											.447	.427		L-51, 2-1/2-4
19		1 (.250)								.275	.260	.478	.458	L-50, 2-1/2-4
20		8 (.164)	1.560	.281						.178	.168	.385	.365	L-52, 2-1/2-4
21		4 (.112)	.967	.117						.127	.114	.228	.208	L-58, 6-9
22		5 (.125)	1.029							.140	.128	.244	.224	L-57, 6-9
23			1.092	.187						.152	.142	.260	.240	L-59, 6-9
24		6 (.138)	1.154	.218										L-53, 6-9
25	12-10	8 (.164)	1.217	.250	.250	.046	.032	.255	.135	.178	.168	.322	.302	L-61, 6-9
26		10 (.190)						.199	.128	.203	.193			L-63, 6-9
27		12 (.216)	1.373	.328						.236	.220	.385	.365	L-64, 6-9
28											.447	.427		L-51, 6-9
29		1 (.250)								.275	.260	.478	.458	L-50, 6-9
30		8 (.164)	1.685	.281						.178	.168	.385	.365	L-52, 6-9

TABLE II (REF)

WIRE SIZE	NAVY CABLE SIZE
1	(1)
1	(7)
1	(10)
1-1/2	(1)
1-1/2	(7)
1-1/2	(16)
1-1/2	(41)
2	(7)
2-1/2	(1)
2-1/2	(19)
2-1/2	(26)
3	(7)
4	(1)
4	(19)
4	(7)
4	(41)
6	(7)
6	(19)
9	(7)
9	(37)

## REQUIREMENTS:

1. MATERIAL: SEE ACQUISITION SPECIFICATION.
2. FINISH: TIN PLATED. SEE ACQUISITION SPECIFICATION.
3. DIMENSIONS IN INCHES.
4. TENSILE STRENGTH: THE TENSILE STRENGTH SHALL BE THAT SPECIFIED IN PROCUREMENT SPECIFICATION.
5. DESIGN AND CONSTRUCTION: LUG TERMINALS SHALL BE OF THE DESIGN, CONSTRUCTION AND PHYSICAL DIMENSIONS SPECIFIED IN THE FIGURE AND TABLE I AND SHALL MEET THE PERFORMANCE REQUIREMENTS OF MIL-T-7928 WHEN CRIMPED ON MIL-C-915 AND MIL-C-2194 CABLE WITH A MIL-C-22520/25 CRIMPING TOOL AND MIL-C-22520/24 CRIMPING TOOL. THIS STANDARD DEPICTS ONLY GENERAL DESIGN CHARACTERISTICS AND IS NOT INTENDED TO LIMIT SPECIFIC MANUFACTURING PROCESSES. WIRE INSULATION SUPPORT NOT REQUIRED.

FOR DESIGN FEATURE PURPOSES, THIS STANDARD TAKES PRECEDENCE OVER ACQUISITION DOCUMENTS REFERENCED HEREIN. REFERENCED DOCUMENTS SHALL BE OF THE ISSUE IN EFFECT ON DATE OF INVITATIONS FOR BID.

## REVISED AND REDRAWN

P.A. NAVY - AS	TITLE	MILITARY STANDARD	
Other Cust Army - ER USAF - 99	TERMINAL, LUG, UNINSULATED, RECTANGULAR TONGUE, CRIMP STYLE, COPPER, TYPE I, CLASS 1 FOR 175°C TOTAL CONDUCTOR TEMPERATURE	MS21003	
ACQUISITION SPECIFICATION MIL-T-7928	SUPERSEDES:	SHEET 1	OF 2

FED. SUP CLASS

5940

USER SYMBOLS:  
NAVY - MCREVIEWER SYMBOLS:  
NAVY - SH, EC  
ARMY - AV  
USAF - II

"Review/user information is current as of the date of this document.  
For future coordination of changes to this document, draft circulation  
should be based on the information in the current DODISS."

This military standard is approved for use by all Departments  
& Agencies of the Department of Defense. Selection for all new  
engineering and design applications and for repetitive use shall  
be made from this document.

METRIC TABLE FOR MS21003B

(B)

INCHES	MM	INCHES	MM	INCHES	MM	INCHES	MM
.023	0.58	.135	3.43	.220	5.59	.478	12.14
.032	0.81	.138	3.51	.224	5.69	.780	19.81
.046	1.17	.139	3.53	.228	5.79	.841	21.36
.048	1.22	.140	3.56	.236	5.99	.842	21.39
.052	1.32	.142	3.61	.240	6.10	.904	22.96
.060	1.52	.152	3.86	.244	6.20	.966	24.54
.070	1.78	.164	4.17	.250	6.35	.967	24.56
.081	2.06	.165	4.19	.255	6.48	1.029	26.14
.086	2.18	.168	4.27	.260	6.60	1.092	27.74
.090	2.29	.177	4.50	.275	6.99	1.154	29.31
.098	2.49	.178	4.52	.281	7.14	1.186	30.12
.110	2.79	.187	4.75	.302	7.67	1.217	30.91
.112	2.84	.190	4.83	.322	8.18	1.249	31.72
.114	2.90	.192	4.88	.328	8.33	1.373	34.87
.117	2.97	.193	4.90	.365	9.27	1.498	38.05
.122	3.10	.199	5.05	.385	9.78	1.560	39.62
.125	3.18	.203	5.16	.427	10.85	1.685	42.80
.127	3.23	.208	5.28	.447	11.35		
.128	3.25	.218	5.54	.458	11.63		

☆U.S. GOVERNMENT PRINTING OFFICE: 1981 — 703-023/3931

APPROVED 26 SEPT 67 REVISED (B) FOR CHANGES SEE SHEETS 1 AND 2

P.A.  
NAVY - AS  
Other CustArmy - ER  
USAF - 99

TITLE

TERMINAL, LUG, UNINSULATED, RECTANGULAR TONGUE,  
CRIMP STYLE, COPPER, TYPE I, CLASS 1  
FOR 175°C TOTAL CONDUCTOR TEMPERATURE

MILITARY STANDARD

MS21003

ACQUISITION SPECIFICATION  
MIL-T-7928

SUPERSEDES:

SHEET 2 OF 2

DD FORM 672-1 (Coordinated)  
1 MAR 72

PREVIOUS EDITIONS OF THIS FORM ARE OBSOLETE.

PLATE NO. 23065