

INCH-POUND

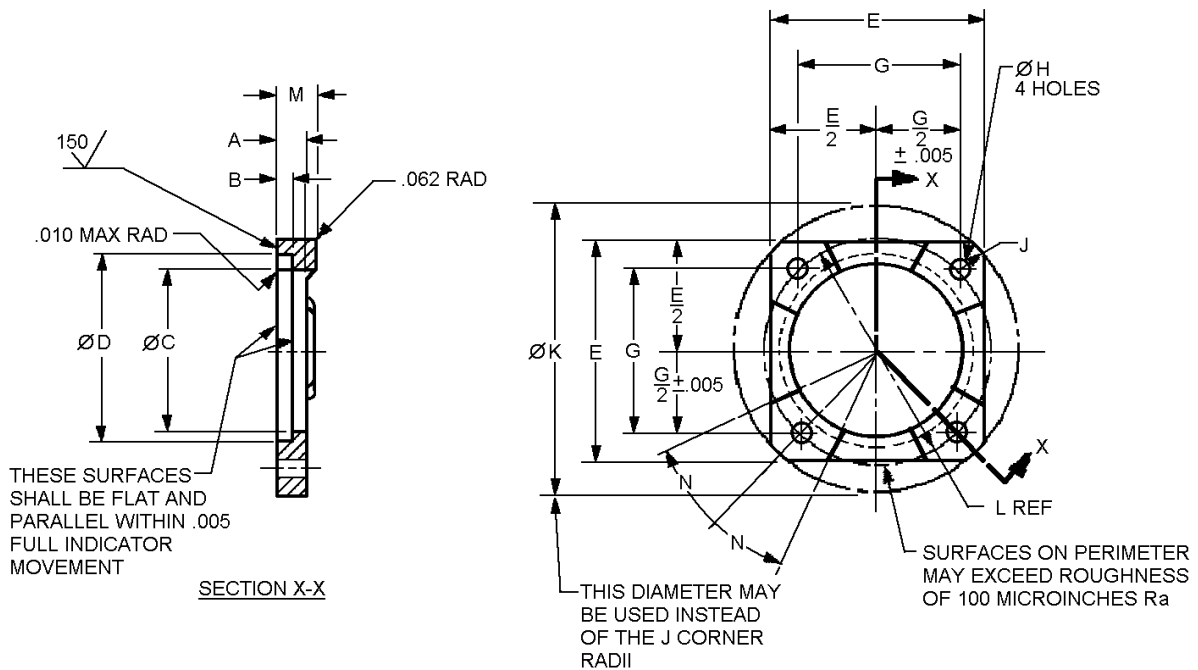
MS20756D  
 7 October 2008  
 SUPERSEDING  
 MS27056C  
 16 June 1978

## DETAIL SPECIFICATION SHEET

## FLANGE, SWIVEL, RETAINING

This specification is approved for use by all Departments and  
 Agencies of the Department of Defense.

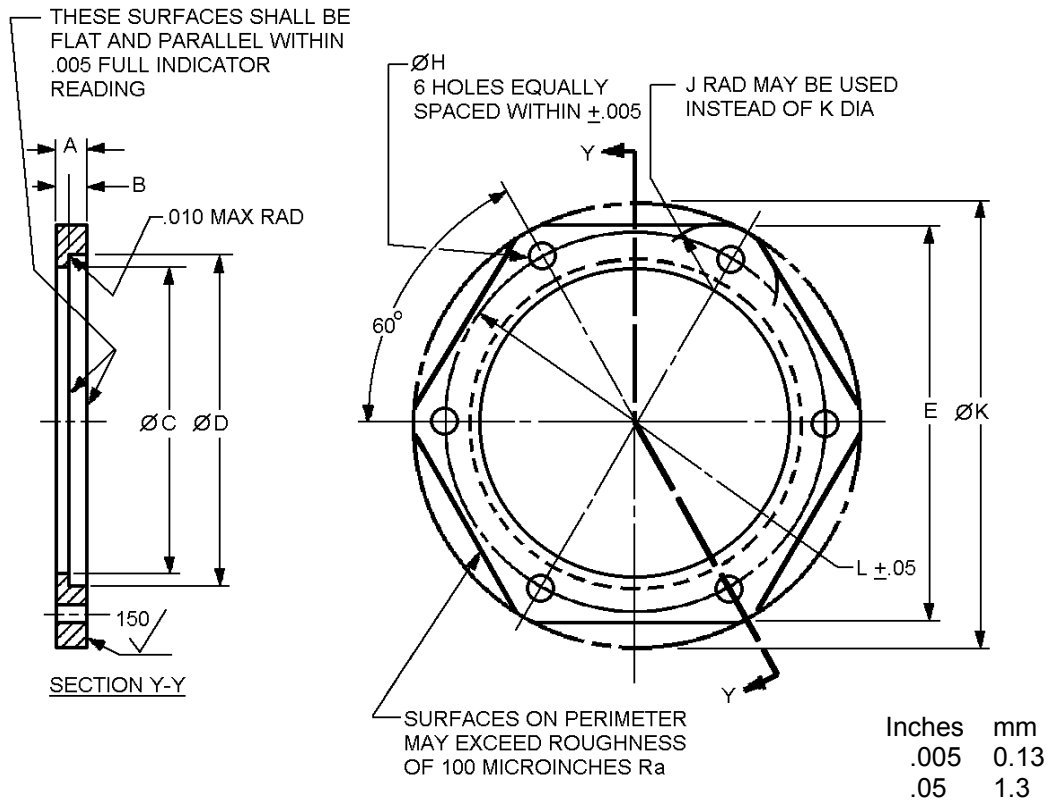
The requirements for acquiring the product described herein shall consist of this specification sheet.



Inches	mm
.005	0.13
.010	0.25
.062	1.57

FIGURE 1. Swivel fitting flange size 12 through 48.

## MS20756D



Size designator	Tubing OD and hose ID inches (mm)	A +.015 -.005 (+0.38 -0.13) inches (mm)	B +.005 (0.13) -.000 inches (mm)	C dia (see note 4) +.010 (0.25) -.000 inches (mm)	D dia (see note 4) +.005 (0.13) -.000 inches (mm)	E inch (mm)	
12	.750 (19.05)	.234 (5.94)	.136 (3.45)	1.125 (28.58)	1.260 (32.00)	1.594 (40.49)	±.016 (0.41)
16	1.000 (25.40)			1.375 (34.93)	1.510 (38.35)	1.750 (44.45)	
20	1.250 (31.75)			1.688 (42.88)	1.854 (47.09)	2.188 (55.58)	
24	1.500 (38.10)	.297 (7.54)	.168 (4.27)	1.938 (49.23)	2.135 (54.23)	2.375 (60.33)	±.020 (0.51)
32	2.000 (50.80)			2.562 (65.07)	2.760 (70.10)	3.000 (76.20)	
40	2.500 (63.50)			3.062 (77.77)	3.291 (83.59)	4.000 (101.60)	
48	3.000 (76.20)			3.562 (90.47)	3.791 (96.29)	4.500 (114.30)	

FIGURE 1. Swivel fitting flange size 12 through 48 - Continued.

## MS20756D

Size number	G ±.005 (0.13) inches (mm)	H dia +.010 (0.25) -.000 inches (mm)	J radius ±.016 (0.41) inches (mm)	K dia ±.015 (0.38) inches (mm)	L dia inches (mm)	M ±.016 (0.41) inches (mm)	N
12	1.156 (29.36)	.205 (5.21)	.219 (5.56)	2.094 (53.19)	1.635 (41.53)	.296 (7.52)	20°
16	1.312 (33.32)			2.312 (58.72)	1.855 (47.12)		18°
20	1.656 (42.06)	.266 (6.76)	.266 (6.76)	2.875 (73.03)	2.342 (59.49)	.359 (9.12)	16°
24	1.812 (46.02)		.281 (7.14)	3.094 (78.59)	2.562 (65.07)		
32	2.375 (60.33)	.328 (8.33)	.312 (7.92)	3.953 (100.41)	3.359 (85.32)		12°
40	-		.375 (9.53)	4.500 (114.30)	3.812 (96.82)	-	-
48	-		.625 (15.88)	5.000 (127.00)	4.312 (109.52)	-	-

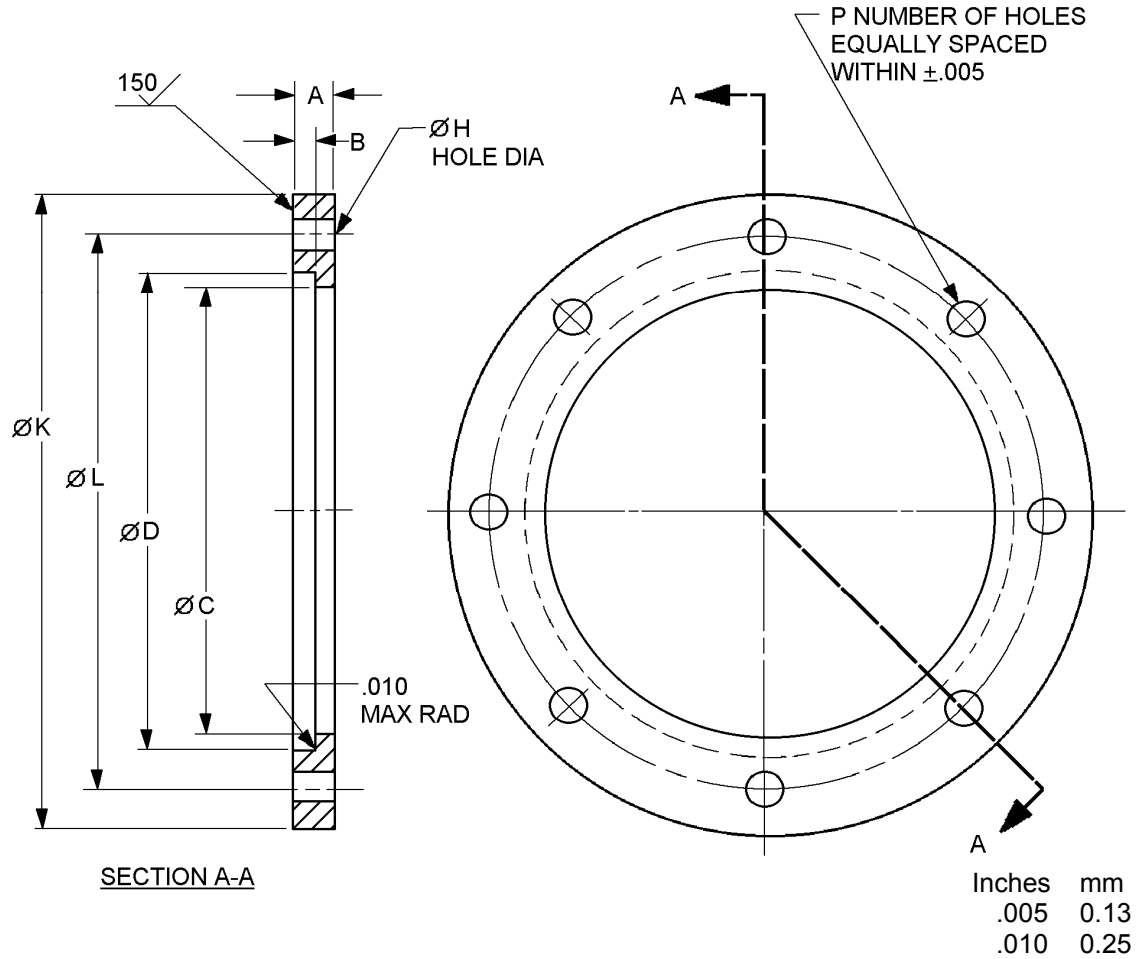
Size number	Weight max (estimated) lbs (gram)		
	Steel	Al alloy	Titanium
12	.08 (36)	.03 (14)	.04 (18)
16			
20	.14 (64)	.05 (23)	.07 (32)
24	.17 (77)	.06 (27)	.09 (41)
32	.25 (113)	.09 (41)	.13 (59)
40	.45 (204)	.16 (73)	.23 (104)
48	.53 (240)	.19 (86)	.10 (45)

## NOTES:

1. Dimensions are in inches.
2. Metric equivalents are given for information only.
3. Unless otherwise, tolerances, ±.005 inch (0.13 mm) angles ±.5°.
4. Diameters C and D shall be concentric within .010 inch (0.25 mm) full indicator reading.
5. Unless otherwise specified, the surface roughness shall not exceed 100 microinches (25.4 µm) Ra in accordance with ASME B46.1.
5. Break all sharp edges; remove all loose or hanging burrs and slivers that may become dislodged.
6. For tube sizes -12 and -16, maximum operating temperature 275°F (135°C), maximum pressure 1500 psi (10 MPa).
7. For tube sizes -20 through -48, maximum operating temperature 275°F (135°C), maximum pressure 500 psi (3.4 MPa).

FIGURE 1. Swivel fitting flange size 12 through 48 - Continued.

## MS20756D



Size number	A +.015 -.005 (+0.38) -(0.13) inches (mm)	B +.005 (0.13) -.000 inches (mm)	C dia (see note 4) .031 (0.79) inches (mm)	D dia (see note 4) inches (mm)		H dia +.010 (0.25) -.000 inches (mm)	K dia $\pm .015$ (0.38) inches (mm)
56	.312	.168	3.968 (100.79)	4.234	+.010	.328 (8.33)	5.562 (141.27)
64	(7.92)	(4.27)	4.531 (115.09)	4.797	+.010		6.125 (155.58)
80			5.531 (140.49)	5.797	+.010		7.125 (180.98)
96	.375	.188	6.531 (165.89)	6.797	+.020		8.125 (206.38)
112	(9.53)	(4.78)	7.594 (192.89)	7.860	+.020		9.188 (233.38)
	.437	.200		(199.64)	-.000		
	(11.10)	(5.08)					

FIGURE 2. Swivel fitting flange size 56 through 112.

## MS20756D

Size number	L dia $\pm.005$ (0.13) inches (mm)	P number of holes
56	4.875 (123.83)	8
64	5.438 (138.13)	
80	6.438 (163.53)	10
96	7.438 (188.93)	12
112	8.500 (215.90)	14

## NOTES:

1. Dimensions are in inches.
2. Metric equivalents are given for information only.
3. Unless otherwise, tolerances,  $\pm.005$  inch (0.13 mm), angles  $\pm.5^\circ$ .
4. Diameters C and D shall be concentric within .010 inch (0.25 mm) full indicator reading.
5. Unless otherwise specified, the surface roughness shall not exceed 100 microinches (2.54  $\mu\text{m}$ ) Ra in accordance with ASME B46.1.
5. Break all sharp edges; remove all loose or hanging burrs and slivers that may become dislodged.
6. Maximum operating temperature 275°F (135°C), maximum pressure 500 psi (3.4 MPa).

FIGURE 2. Swivel fitting flange size 56 through 112 - Continued

## REQUIREMENTS:

## Design and construction:

Dimensions and configuration: See figures 1 and 2.

Reduction by forging draft angle of  $7^\circ$  maximum is permissible.

Materials. Materials shall be in accordance with MIL-DTL-83798.

Finishes. Finishes for the flange shall be in accordance with MIL-DTL-83798.

Finish designators shall be as specified in table I.

## MS20756D

TABLE I. Flange finish code. 1/

PIN code dash letter	Material	Plating Finish
Blank	Steel	Cadmium plating in accordance with SAE-AMS-C-81562, type II, class 3 or SAE-AMS-QQ-P-416, type II, class 2.
	Aluminum	Anodize in accordance with MIL-A-8625, type II. <u>2/</u>
-A	Steel	Aluminum-nickel in accordance with ASTM F1136, grade 3, NC
-B	Aluminum	Anodize above with NAVAIR trivalent chromium pretreatment (TCP) in accordance with MIL-DTL-81706, type 2, class A. <u>2/</u>
-CN	Steel	Cadmium plating in accordance with SAE-AMS-C-81562, type II, class 3 or SAE-AMS-QQ-P-416, type II, class 2 with NAVAIR TCP in accordance with MIL-DTL-81706, type 2, class A.
-H	Steel	Zinc phosphate finish in accordance MIL-DTL-16232 type Z, class1. <u>3/</u>
-J	Steel	Zinc plating in accordance with ASTM B633; type II or III, Fe/Zn 5, or ASTM B695, type II, class 5.
N	Steel	NAVAIR TCP in accordance with MIL-DTL-81706, type 2, class A.
-R	Steel	Zinc plating in accordance with ASTM B633; type VI, Fe/Zn 5.
-S	Corrosion resistant steel	No additional finish. Passivation in accordance with SAE-AMS2700, type 6 or 7.
-T	Titanium	Annealed
-V	Steel	Zinc-nickel in accordance with SAE-AMS2417, type 1.
-Z	Zinc any type above	PIN code F, G, H, J, K, R, V.
-ZN	Zinc any type above	PIN code F, G, H, J, K, R, V with NAVAIR TCP in accordance with MIL-DTL-81706, type 2, class A.

1/ Shall be capable of withstanding minimum of 96 hours salt spray.

2/ Die light blue.

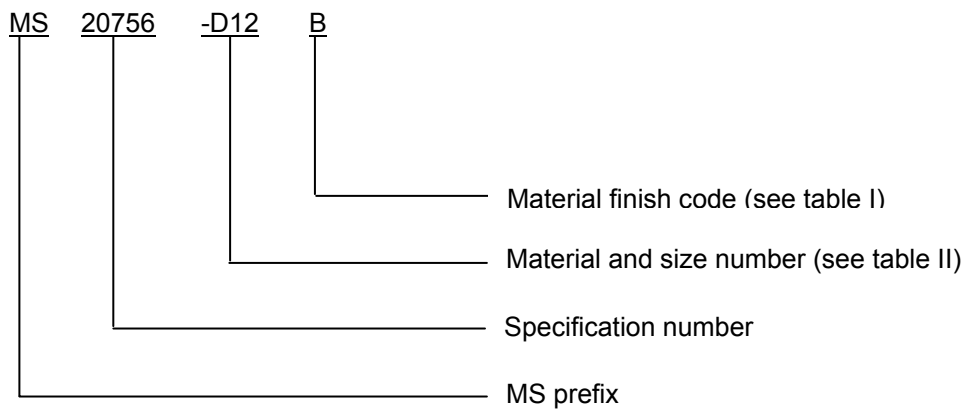
3/ Hexavalent chromium free.

Trivalent wrenchability. When the finish has been damaged due to poor wrenchability, the surface of the connector shall be touched up using the brush plating process below. The term "trivalent wrenchability" is used to evaluate the ability of the finish to withstand abrasion from an excessive amount of wrenching

- a. Brush plating of hard chromium by electrodeposition shall be in accordance with SAE-AMS-2451/5.
- b. Brush plating of medium-hardness, low stress nickel by electrodeposition shall be in accordance with SAE-AMS-2451/9.
- c. Brush plating of NAVAIR TCP shall be in accordance with MIL-DTL-81706, type 2, class A, material form 1 through 6, application method B. Example of a PIN: M817062A6B.

## MS20756D

Part or Identifying Number (PIN) example:



MS20756-D12B indicates: Flange, .750 inch tube ID, aluminum anodized with NAVAIR TCP.

Material and size designators. Material and size designators shall be as specified in table II.

TABLE II. Material and size designators.

Size dash number with letter material designator			
Steel	Aluminum alloy	CRES <u>1/</u>	Titanium <u>2/</u>
-12	-D12	-C12	-T12
-16	-D16	-C16	-T16
-20	-D20	-C20	-T20
-24	-D24	-C24	-T24
-32	-D32	-C32	-T32
-40	-D40	-C40	-T40
-48	-D48	-C48	-T48
-56	-D56	-C56	-T56
-64	-D64	-C64	-T64
-80	-D80	-C80	-T80
-96	-D96	-C96	-T96
-112	-D112	-C112	-T112

1/ Corrosion resistant steel (CRES).

2/ Titanium shall not be used in potable water or oxygen systems.

Marking. The complete PIN shall be permanently marked.

Guidance on use of alternative parts with less hazardous or nonhazardous materials. This specification provides for a number of alternative plating materials via the PIN. Users should select the PIN with the least hazardous material that meets the form, fit and function requirements of their application.

For nominal use on fuel and oil systems.

## MS20756D

Changes from previous issue. Marginal notations are not used in this revision to identify changes with respect to the previous issue due to the extent of the changes.

Referenced documents. This document references the following:

MIL-A-8625	ASTM F1136
MIL-DTL-16232	SAE-AMS-C-81562
MIL-DTL-81706	SAE-AMS-QQ-P-416
MIL-DTL-83798	SAE-AMS2700
ASME B46.1	SAE-AMS2417
ASTM B633	SAE-AMS-2451/5
ASTM B695	SAE-AMS-2451/9

## CONCLUDING MATERIAL

### Custodians:

Army - AV  
Navy - AS  
Air Force - 99  
DLA - CC

### Preparing activity:

DLA - CC

(Project 4730-2008-086)

### Review activities:

Army - AT  
Navy - SA  
Air Force - 85

NOTE: The activities listed above were interested in this document as of the date of this document. Since organizations and responsibilities can change, you should verify the currency of the information above using the ASSIST Online database at <http://assist.daps.dla.mil>.