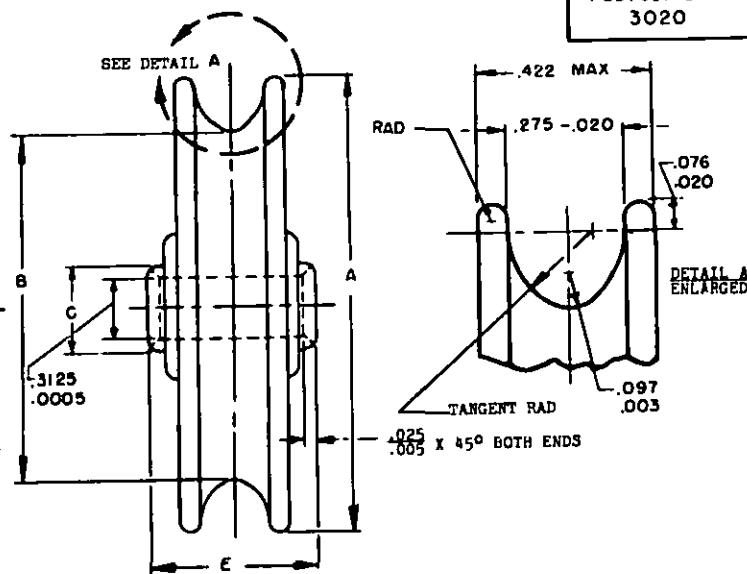
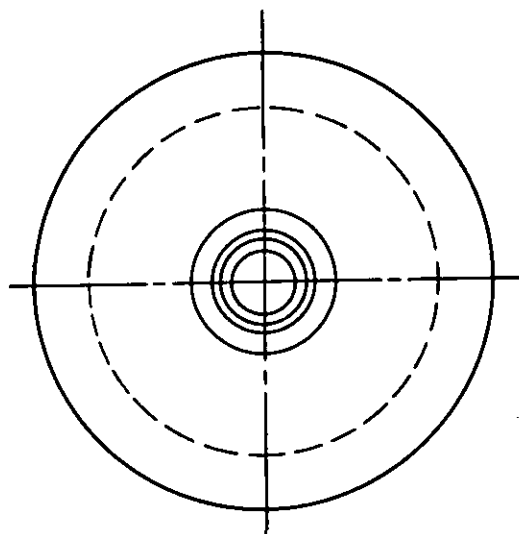


User Activities:  
Air Force - 99

Review Activities:  
Army - AV  
Navy - AS

This military standard is approved for use by all Departments and Agencies of the Department of Defense. Selection for all new engineering and design applications and for repetitive use shall be made from this document, when applicable.



HUB MAY BE ADDED TO PULLEY SHEAVE WHERE WIDTH OF BEARING OUTER RACE IS GREATER THAN MAXIMUM WIDTH OF PULLEY SHEAVE.

NONMETALLIC SHEAVE NO.	METALLIC SHEAVE NO.	CABLE SIZE	A	B	C	E	PULLEY ASSY
			OUTSIDE DIA ±.005	GROOVE DIA ±.005	HUB DIA (REF)	I.R. WIDTH -.005	WEIGHT MAX
		INCHES	INCHES	INCHES	INCHES	LBS	
MS20220 -1	A1	1/8 5/32 3/16	1.750	1.250	.465	.625	.070
-2	A2		3.000	2.500	.478		.175
-3	A3		4.250	3.750			.260
-4	A4		5.500	5.000			.370

MS20220 DASH NOS.	PULLEY STRENGTH				AFBMA BEARING (REF)
	ALLOWABLE LIMIT  LOAD  ON PULLEY  LBS	MAXIMUM LIMIT LOAD ON CABLE INDEPENDENT OF WRAP ANGLE			
		1/8 CABLE	5/32 CABLE	3/16 CABLE	
-1, A1	500	830 LBS	1040 LBS	1250 LBS	P5K
-2, A2	1680				PD5K
-3, A3	2500				
-4, A4					

MATERIAL: METALLIC SHEAVES: ALUMINUM ALLOY, QQ-A-225/6, T351 OR AMS 4037, T351.  
NONMETALLIC SHEAVES: PHENOLIC, SEE PROCUREMENT SPECIFICATION.

FINISH: ALUMINUM - ANODIZE, MIL-A-8625, TYPE II.

EXAMPLES OF PART NUMBERS: MS20220-2 - NONMETALLIC SHEAVE AND FIXED BALL BEARING WITH CONTACT SEAL.  
MS20220A2 - METALLIC SHEAVE AND FIXED BALL BEARING WITH CONTACT SEAL.

DIMENSIONS IN INCHES. UNLESS OTHERWISE SPECIFIED, TOLERANCES: DECIMALS -.010  
END FACES OF ALL BEARING HUBS MUST BE FLAT AND SQUARE WITH BORE WITHIN ±1°.

THIS STANDARD TAKES PRECEDENCE OVER DOCUMENTS REFERENCED HEREIN. REFERENCED DOCUMENTS SHALL BE OF THE ISSUE IN EFFECT ON DATE OF INVITATIONS FOR BID.

(C) ENTIRE STANDARD REVISED.

P.A. AIR FORCE - 11

Other Cust

ARMY - AV  
NAVY - AS

TITLE

PULLEY, GROOVE, FLIGHT CONTROL, AIRCRAFT

MILITARY STANDARD

MS20220

PROCUREMENT SPECIFICATION

MIL-P-7034

SUPERSEDES: AN220

SHEET 1 OF 1

DD FORM 1 SEP 57 672-1

PREVIOUS EDITIONS OF THIS FORM ARE OBSOLETE.

Project No. 3020-0104

APPROVED 25 Feb 60 REVISED (A) 31 Mar 65 (B) 21 Jun 76 (C) 31 July 1982