

This military standard is mandatory for use by all Departments and Agencies of the Department of Defense. Submission for all new engineering and design applications and for repetitive use shall be made from this document.

User activities: Army
Navy
Air Force

Review activities: Army - MU
Navy - EC
Air Force - II, 15, 80
DSA - ES

(U) DENOTES CHANGE

P.A. AF-85

Other Cust Army-EL

Navy - AS

Procurement Specification

MIL-C-38999, 27599(USAF)

International interest

TITLE

INSERT ARRANGEMENT, ELECTRIC
CONNECTOR, SHELL SIZE 15

SUPERSEDES:

MILITARY STANDARD

MS 20052

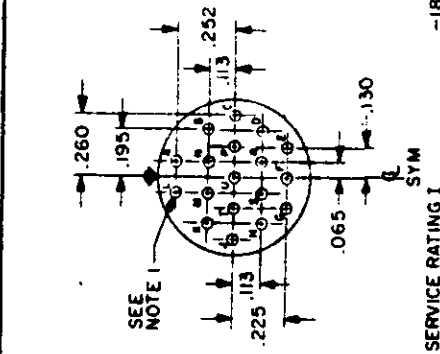
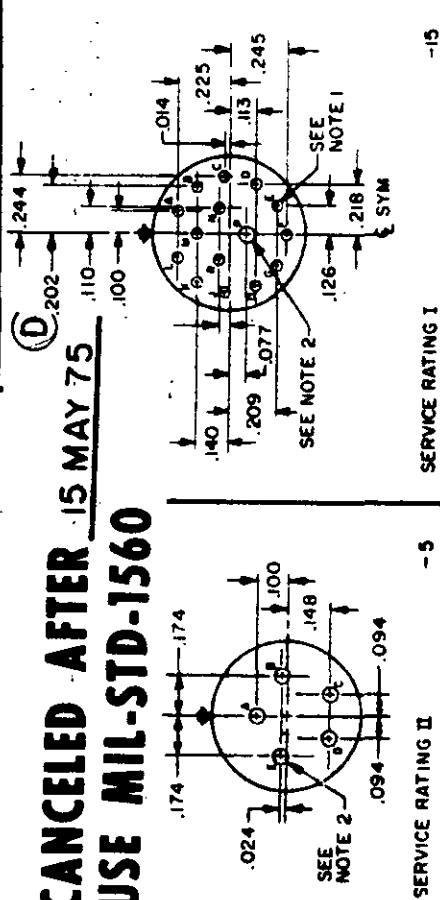
PAGE 1 OF 1

DD FORM 1 SEP 63 672

(Coordinated) PREVIOUS EDITIONS OF THIS FORM ARE OBSOLETE

5935-T119

CANCELED AFTER 15 MAY 75
USE MIL-STD-1560



ARR. NO.	No. of Contacts	Receptacles			Plugs		
		Style	Flange mtg	Jam-mtg	Solder mtg	Style	Line
-5	5	Pin	MS20026-15-5P	MS20026-15-5P		Pin	MS20026-15-5P
		Socket	MS20026-15-5S	MS20026-15-5S		Socket	MS20026-15-5S
		Socket	MS20030-15-5S	MS20031-15-5S	MS20032-15-5S	Socket	MS20027-15-5S
-15	14	Pin	MS20026-15-15P	MS20026-15-15P		Pin	MS20026-15-15P
		Socket	MS20026-15-15S	MS20026-15-15S		Socket	MS20026-15-15S
		Socket	MS20030-15-15S	MS20031-15-15S	MS20032-15-15S	Socket	MS20027-15-15S
-18	18	Pin	MS20026-15-18P	MS20026-15-18P		Pin	MS20026-15-18P
		Socket	MS20026-15-18S	MS20026-15-18S		Socket	MS20026-15-18S
		Socket	MS20030-15-18S	MS20031-15-18S	MS20032-15-18S	Socket	MS20027-15-18S
-37	37	Pin	MS20026-15-37P	MS20026-15-37P		Pin	MS20026-15-37P
		Socket	MS20026-15-37S	MS20026-15-37S		Socket	MS20026-15-37S
		Socket	MS20030-15-37S	MS20031-15-37S	MS20032-15-37S	Socket	MS20027-15-37S
-97	8	Pin	MS20026-15-97P	MS20026-15-97P		Pin	MS20026-15-97P
		Socket	MS20026-15-97S	MS20026-15-97S		Socket	MS20026-15-97S
		Socket	MS20030-15-97S	MS20031-15-97S	MS20032-15-97S	Socket	MS20027-15-97S
-19	19	Pin	MS20026-15-19P	MS20026-15-19P		Pin	MS20026-15-19P
		Socket	MS20026-15-19S	MS20026-15-19S		Socket	MS20026-15-19S
		Socket	MS20030-15-19S	MS20031-15-19S	MS20032-15-19S	Socket	MS20027-15-19S

INCHES	MM	INCHES	MM
.014	.36	.148	3.76
.024	.61	.174	4.42
.040	1.02	.195	4.95
.065	1.65	.202	5.13
.077	1.96	.209	5.31
.094	2.39	.218	5.54
.100	2.54	.225	5.72
.110	2.79	.244	6.20
.113	2.87	.245	6.22
.126	3.20	.252	6.40
.130	3.30	.260	6.60
.140	3.56		

FED. SUP. CLASS
5935

APPROVED 22 JAN 65 REVISED 11 JUN 66 24 MAR 72 (C) 14 NOV 72 15 MAY 75