

INCH - POUND

MS20029G
 31 August 2010
 SUPERSEDING
 MS20029F
 20 May 2005

DETAIL SPECIFICATION SHEET

CONNECTORS, RECEPTACLE, ELECTRICAL, JAM NUT MOUNTING,
 SOLDER TYPE, BAYONET COUPLING, CLASS P, SERIES I

Inactive for new design after 7 December 1998.

This specification is approved for use by all Departments
 and Agencies of the Department of Defense.

The requirements for acquiring the product described herein
 shall consist of this specification sheet and MIL-DTL-27599.

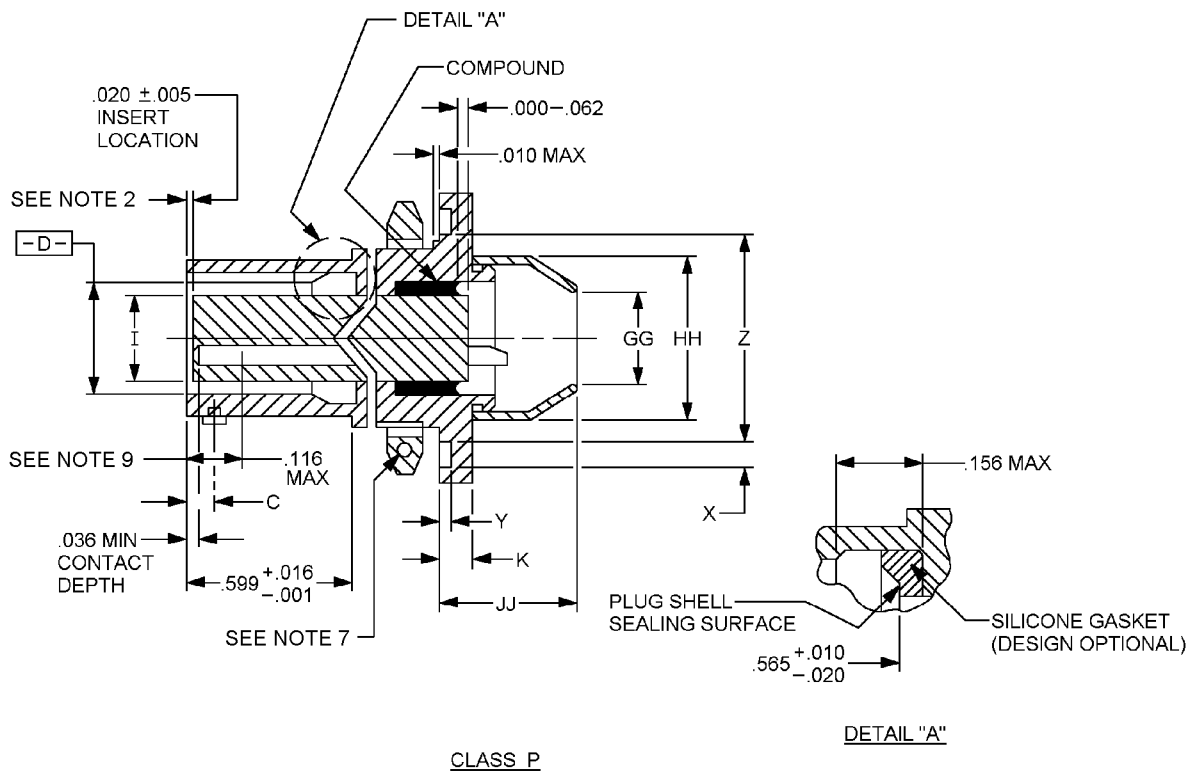
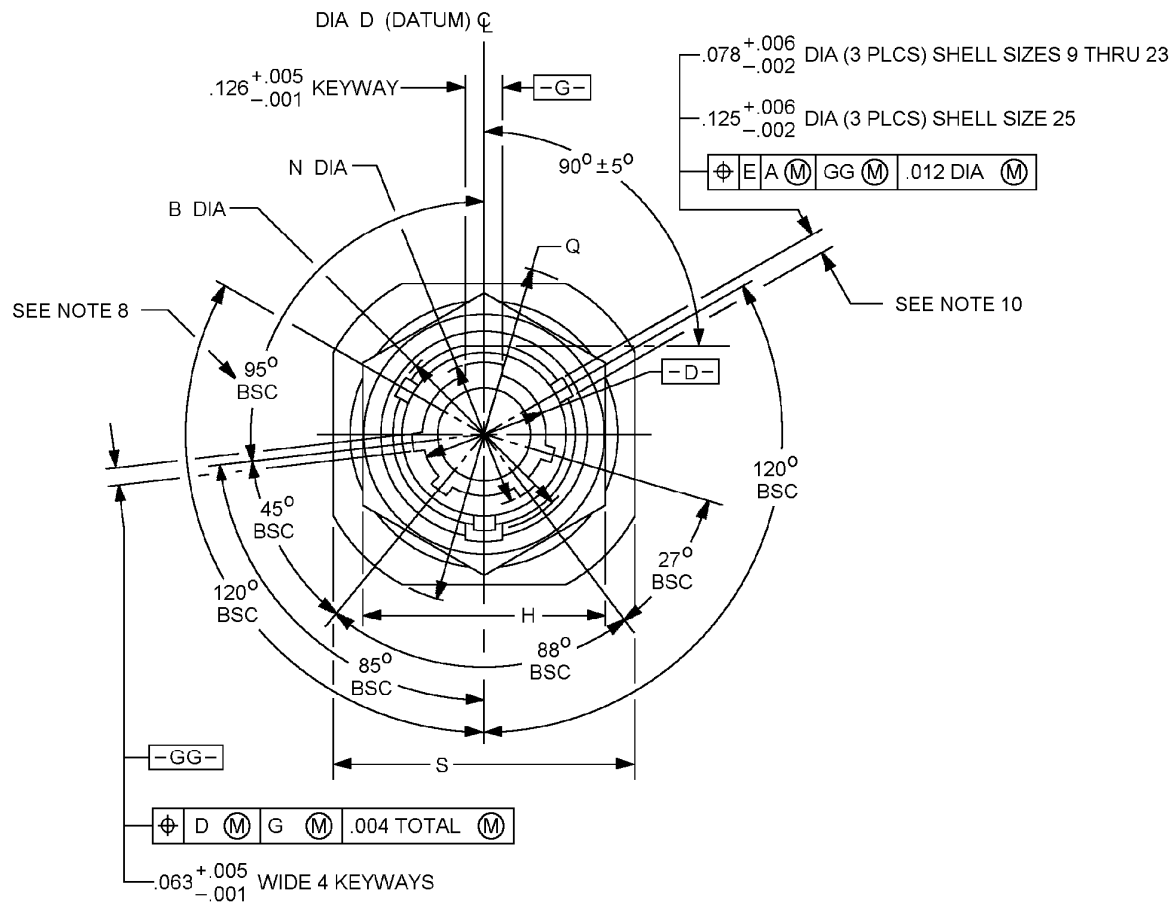


FIGURE 1. Receptacle, jam nut mounting.

MS20029G



CLASS P

FIGURE 1. Receptacle, jam nut mounting - Continued.

MS20029G

Inches	mm	Inches	mm	Inches	mm	Inches	mm
0.001	0.0254	0.016	0.40	0.078	1.98	0.390	9.90
0.002	0.051	0.020	0.51	0.094	2.39	0.565	14.35
0.005	0.127	0.036	0.91	0.116	2.95	0.576	14.63
0.006	0.152	0.040	1.02	0.125	3.17	0.599	15.21
0.010	0.254	0.047	1.19	0.126	3.20	0.915	23.24
0.011	0.28	0.062	1.57	0.156	3.96		
0.015	0.38	0.063	1.60	0.266	6.76		

FIGURE 1. Receptacle, jam nut mounting - Continued.TABLE I. Dimensions. 1/ 2/

Shell Size	A dia + .001 - .005	B dia + .000 - .016	C BSC	D dia + .005 - .001	H hex + .017 - .016	I dia ± .005	CC
9	.572 (14.53)	.662 (16.81)	.100 (2.54)	.442 (11.22)	.875 (22.22)	.296 (7.52)	.010 (.254)
11	.700 (17.78)	.810 (20.57)		.570 (14.48)	1.000 (25.40)	.413 (10.50)	
13	.850 (21.60)	.960 (24.38)		.687 (17.45)	1.188 (30.17)	.527 (13.38)	
15	.975 (24.76)	1.085 (27.56)		.812 (20.62)	1.312 (33.32)	.652 (16.56)	
17	1.100 (27.94)	1.210 (30.73)		.937 (23.80)	1.438 (36.52)	.777 (19.73)	
19	1.207 (30.65)	1.317 (33.45)		1.042 (26.46)	1.562 (39.67)	.866 (22.00)	
21	1.332 (33.83)	1.442 (36.62)		1.167 (29.64)	1.688 (42.87)	.991 (25.17)	
23	1.457 (37.01)	1.567 (39.80)		1.292 (32.81)	1.812 (46.02)	1.116 (28.34)	
25	1.582 (40.18)	1.692 (42.97)	.109 (2.77)	1.417 (35.60)	2.000 (50.80)	1.241 (31.52)	

See notes at end of table.

MS20029G

TABLE I. Dimensions - Continued. 1/ 2/

Shell size	K + .011 - .010	M Thread class 2A, plated, UNEF	N dia + .005 - .006	O + .000 - .010	Q dia ± .016	S ± .016
9	.109 (2.77)	.6875 - 24	.492 (12.50)	.655 (16.64)	1.188 (30.17)	1.062 (26.97)
11		.8125 - 20	.620 (15.75)	.755 (19.17)	1.375 (34.92)	1.250 (31.75)
13		1.0000 - 20	.769 (19.53)	.942 (23.92)	1.500 (38.10)	1.375 (34.92)
15		1.1250 - 18	.894 (22.70)	1.066 (27.07)	1.625 (41.27)	1.500 (38.10)
17		1.2500 - 18	1.019 (25.88)	1.191 (30.25)	1.750 (44.45)	1.625 (41.27)
19		1.3750 - 18	1.124 (28.55)	1.316 (33.42)	1.938 (49.22)	1.812 (46.02)
21	.140 (3.55)	1.5000 - 18	1.249 (31.72)	1.441 (36.60)	2.062 (52.37)	1.938 (49.22)
23		1.6250 - 18	1.374 (34.89)	1.566 (39.77)	2.188 (55.57)	2.062 (52.37)
25		1.7500 - 18	1.499 (38.07)	1.691 (42.95)	2.312 (58.72)	2.188 (55.57)

See notes at end of table.

MS20029G

TABLE I. Dimensions - Continued. 1/ 2/

Shell size	T dia + .011 - .000	V dia ± .011	W + .017 - .000	X + .005 - .001	Y dia ± .005	Z dia + .006 - .005
9	.516 (13.10)	.476 (12.10)	.125 (3.17)	.094 (2.38)	.045 (1.14)	.777 (19.73)
11	.642 (16.30)	.602 (15.30)				.965 (24.51)
13	.766 (19.45)	.726 (18.44)				1.090 (27.68)
15	.892 (22.65)	.852 (21.64)				1.215 (30.86)
17	1.018 (25.86)	.978 (24.84)				1.340 (34.04)
19	1.142 (29.01)	1.102 (28.00)		.141 (3.58)	.075 (1.90)	1.449 (36.80)
21	1.268 (32.20)	1.228 (31.20)				1.574 (39.98)
23	1.392 (35.35)	1.352 (34.34)				1.699 (43.15)
25	1.518 (38.55)	1.478 (37.54)				1.824 (46.33)

See notes at end of table.

MS20029G

TABLE I. Dimensions - Continued. 1/ 2/

Shell size	N dia Min	HH dia Max	JJ max	Recommended packing -ring
9	.317 (8.05)	.625 (15.87)	.688 (17.47)	SAE-AS3578-019
11	.434 (11.02)	.750 (19.05)		SAE-AS3578-022
13	.548 (13.92)	.875 (22.22)		SAE-AS3578-024
15	.673 (17.09)	1.000 (25.40)		SAE-AS3578-026
17	.798 (20.27)	1.125 (28.57)		SAE-AS3578-028
19	.899 (22.83)	1.250 (31.75)	.719 (18.26)	SAE-AS3578-128
21	1.024 (26.01)	1.375 (34.92)	.812 (20.62)	SAE-AS3578-130
23	1.149 (29.18)	1.500 (38.10)		SAE-AS3578-132
25	1.274 (32.36)	1.625 (41.27)		SAE-AS3578-134

1/ Dimensions are in inches.2/ Metric equivalents are given for information only.

REQUIREMENTS:

Dimensions and configurations: See figure 1 and table I.

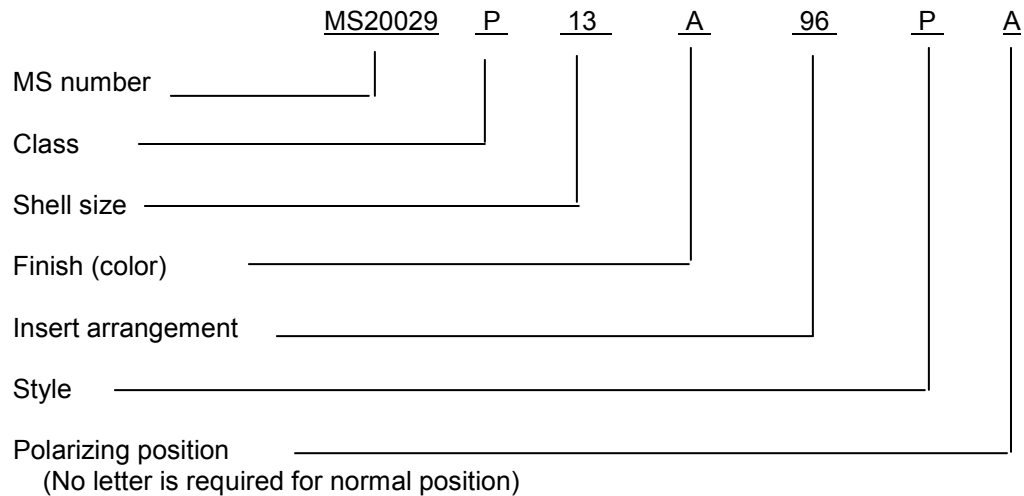
This connector mates with MS20027 and MS20028.

Insert arrangement shall be in accordance with MIL-STD-1560.

Recommended packing for o-ring shall be in accordance with SAE-AS3578. Recommended packing is for dimensions only. Material is optional.

MS20029G

Part or Identifying Number (PIN) example:



Changes from previous issue. Marginal notations are not used in this revision to identify changes with respect to the previous issue due to the extent of the changes.

Referenced documents. In addition to MIL-DTL-27599, this document references the following:

MIL-STD-1560
MS20027
MS20028
SAE-AS3578

CONCLUDING MATERIAL

Custodians:
Air Force - 85
DLA - CC

Preparing activity:
DLA - CC

Review activities:
Air Force - 99
DLA - IS

(Project 5935-2010-099)

NOTE: The activities listed above were interested in this document as of the date of this document. Since organizations and responsibilities can change, you should verify the currency of the information above using the ASSIST Online database at <https://assist.daps.dla.mil>.