

MS20029F

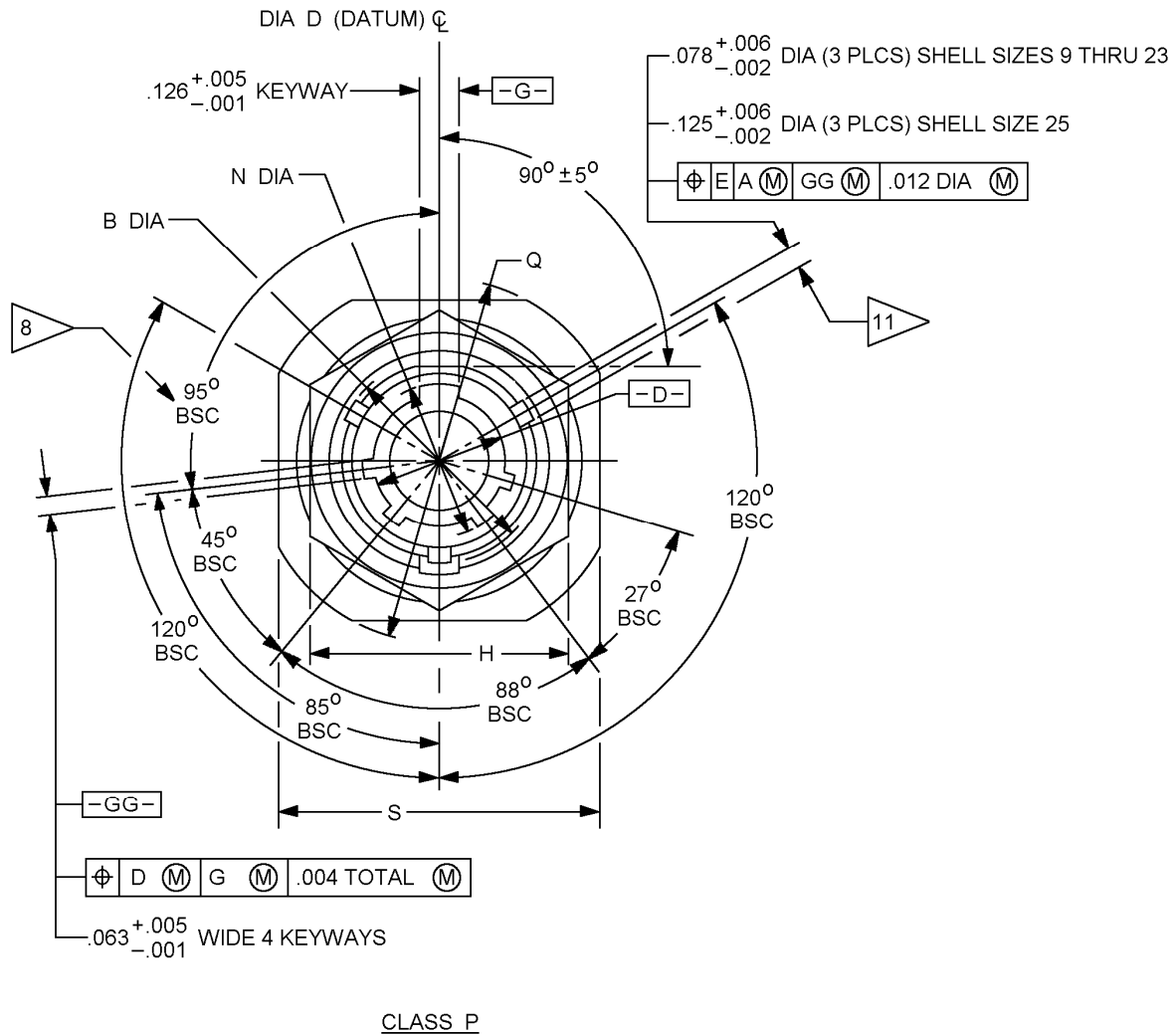
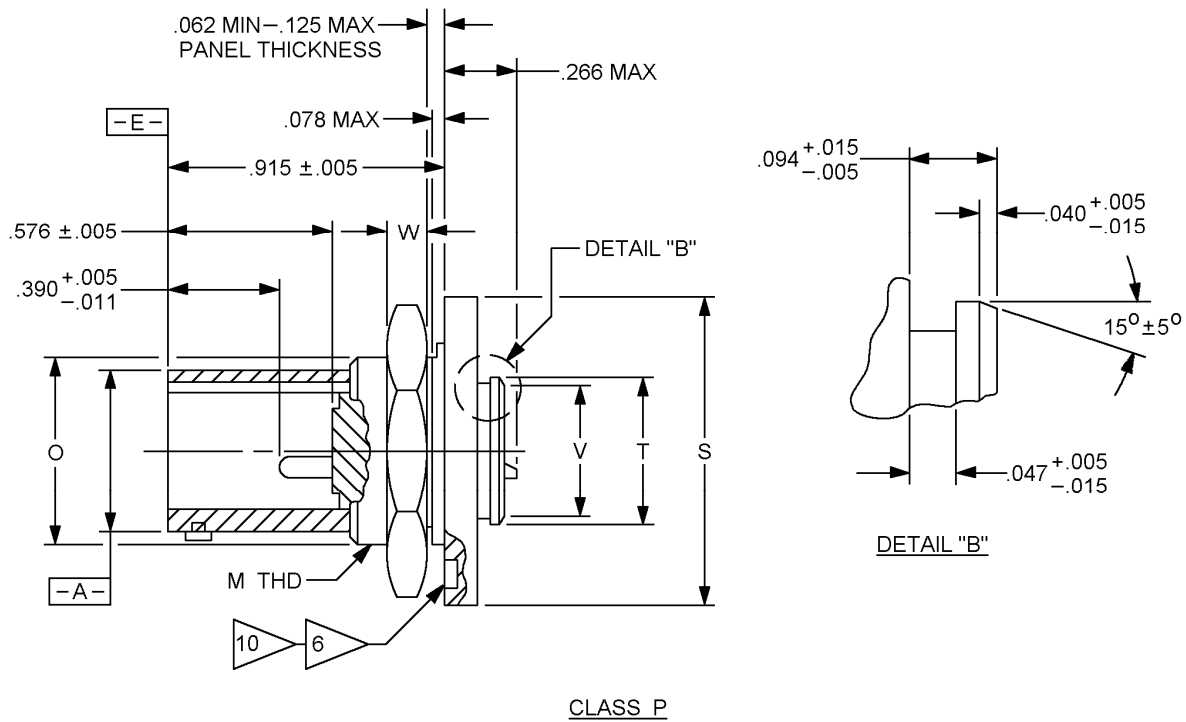


FIGURE 1. Receptacle, jam nut mounting - Continued.

MS20029F



NOTES:

1. Dimensions are in inches. Metric equivalents are in parenthesis and given for information only.
2. Insert front surface shall be flat within .005 T.I.R.
3. Diameters A, D, M, Q and Z shall be concentric within .015 T.I.R.
4. Diameters D and I shall be concentric within .005 T.I.R. at MMC.
5. Diameter A with respect to diameter B, and diameter D with respect to diameter N, shall be concentric at MMC.
6. Sides of groove may have 5° max taper.
7. .062 ± .005 dia., 3 lockwire holes, shell sizes 9 through 25.
8. Normal keyway position. For other keyway positions, see MIL-DTL-27599.
9. The point at which a gauge pin having the same basic diameter as the mating contact and a square face, touches socket contact spring.
10. The gauge features for GG shall be CC smaller than their MMC size.

FIGURE 1. Receptacle, jam nut mounting - Continued.

MS20029F

Inches	mm	Inches	mm	Inches	mm	Inches	mm
0.001	0.0254	0.016	0.40	0.078	1.98	0.390	9.90
0.002	0.051	0.020	0.51	0.094	2.39	0.565	14.35
0.005	0.127	0.036	0.91	0.116	2.95	0.576	14.63
0.006	0.152	0.040	1.02	0.125	3.17	0.599	15.21
0.010	0.254	0.047	1.19	0.126	3.20	0.915	23.24
0.011	0.28	0.062	1.57	0.156	3.96		
0.015	0.38	0.063	1.60	0.266	6.76		

FIGURE 1. Receptacle, jam nut mounting - Continued.TABLE 1. Dimensions.

Shell Size	A dia + .001 - .005	B dia + .000 - .016	C BSC	D dia + .005 - .001	H hex + .017 - .016	I dia ± .005	CC
9	.572 (14.53)	.662 (16.81)	.100 (2.54)	.442 (11.22)	.875 (22.22)	.296 (7.52)	.010 (.254)
11	.700 (17.78)	.810 (20.57)		.570 (14.48)	1.000 (25.40)	.413 (10.50)	
13	.850 (21.60)	.960 (24.38)		.687 (17.45)	1.188 (30.17)	.527 (13.38)	
15	.975 (24.76)	1.085 (27.56)		.812 (20.62)	1.312 (33.32)	.652 (16.56)	
17	1.100 (27.94)	1.210 (30.73)		.937 (23.80)	1.438 (36.52)	.777 (19.73)	
19	1.207 (30.65)	1.317 (33.45)		1.042 (26.46)	1.562 (39.67)	.866 (22.00)	
21	1.332 (33.83)	1.442 (36.62)		1.167 (29.64)	1.688 (42.87)	.991 (25.17)	
23	1.457 (37.01)	1.567 (39.80)	.109 (2.77)	1.292 (32.81)	1.812 (46.02)	1.116 (28.34)	
25	1.582 (40.18)	1.692 (42.97)		1.417 (35.60)	2.000 (50.80)	1.241 (31.52)	

MS20029F

TABLE 1. Dimensions - Continued.

Shell Size	K + .011 - .010	M Thread class 2A, plated, UNEF	N dia + .005 - .006	O + .000 - .010	Q dia ± .016	S ± .016
9	.109 (2.77)	.6875 - 24	.492 (12.50)	.655 (16.64)	1.188 (30.17)	1.062 (26.97)
11		.8125 - 20	.620 (15.75)	.755 (19.17)	1.375 (34.92)	1.250 (31.75)
13		1.0000 - 20	.769 (19.53)	.942 (23.92)	1.500 (38.10)	1.375 (34.92)
15		1.1250 - 18	.894 (22.70)	1.066 (27.07)	1.625 (41.27)	1.500 (38.10)
17		1.2500 - 18	1.019 (25.88)	1.191 (30.25)	1.750 (44.45)	1.625 (41.27)
19		1.3750 - 18	1.124 (28.55)	1.316 (33.42)	1.938 (49.22)	1.812 (46.02)
21	.140 (3.55)	1.5000 - 18	1.249 (31.72)	1.441 (36.60)	2.062 (52.37)	1.938 (49.22)
23		1.6250 - 18	1.374 (34.89)	1.566 (39.77)	2.188 (55.57)	2.062 (52.37)
25		1.7500 - 18	1.499 (38.07)	1.691 (42.95)	2.312 (58.72)	2.188 (55.57)

MS20029F

TABLE 1. Dimensions - Continued.

Shell Size	T dia + .011 - .000	V dia ± .011	W + .017 - .000	X + .005 - .001	Y dia ± .005	Z dia + .006 - .005
9	.516 (13.10)	.476 (12.10)	.125 (3.17)	.094 (2.38)	.045 (1.14)	.777 (19.73)
11	.642 (16.30)	.602 (15.30)				.965 (24.51)
13	.766 (19.45)	.726 (18.44)				1.090 (27.68)
15	.892 (22.65)	.852 (21.64)				1.215 (30.86)
17	1.018 (25.86)	.978 (24.84)				1.340 (34.04)
19	1.142 (29.07)	1.102 (28.00)		.141 (3.58)	.075 (1.90)	1.449 (36.80)
21	1.268 (32.20)	1.228 (31.20)				1.574 (39.98)
23	1.392 (35.35)	1.352 (34.34)				1.699 (43.15)
25	1.518 (38.55)	1.478 (37.54)				1.824 (46.33)

MS20029F

TABLE 1. Dimensions - Continued.

Shell Size	N dia Min	HH dia Max	JJ max	Recommended packing "O" ring
9	.317 (8.05)	.625 (15.87)	.688 (17.47)	SAE-AS3578-019
11	.434 (11.02)	.750 (19.05)		SAE-AS3578-022
13	.548 (13.92)	.875 (22.22)		SAE-AS3578-024
15	.673 (17.09)	1.000 (25.40)		SAE-AS3578-026
17	.798 (20.27)	1.125 (28.57)		SAE-AS3578-028
19	.899 (22.83)	1.250 (31.75)	.719 (18.26)	SAE-AS3578-128
21	1.024 (26.01)	1.375 (34.92)	.812 (20.62)	SAE-AS3578-130
23	1.149 (29.18)	1.500 (38.10)		SAE-AS3578-132
25	1.274 (32.36)	1.625 (41.27)		SAE-AS3578-134

REQUIREMENTS:

Dimensions and configurations: See figure 1 and table 1.

This connector mates with MS20027 and MS20028.

Insert arrangement shall be in accordance with MIL-STD-1560.

MS20029F

Recommended packing for "O" ring shall be in accordance with SAE-AS3578. Recommended Packing is for dimensions only. Material is optional.

Part or Identifying Number (PIN) example:

	<u>MS20029</u>	<u>P</u>	<u>13</u>	<u>A</u>	<u>96</u>	<u>P</u>	<u>A</u>
MS number	_____	_____	_____	_____	_____	_____	_____
Class	_____	_____	_____	_____	_____	_____	_____
Shell size	_____	_____	_____	_____	_____	_____	_____
Finish (color)	_____	_____	_____	_____	_____	_____	_____
Insert arrangement	_____	_____	_____	_____	_____	_____	_____
Style	_____	_____	_____	_____	_____	_____	_____
Polarizing position (No letter is required for normal position)	_____	_____	_____	_____	_____	_____	_____

Changes from previous issue. Marginal notations are not used in this revision to identify changes with respect to the previous issue due to the extent of the changes.

Reference documents. In addition to MIL-DTL-27599, this document references the following:

MIL-STD-1560
MS20027
MS20028
SAE-AS3578

CONCLUDING MATERIAL

Custodians:
Air Force - 11
DLA - CC

Preparing activity:
DLA - CC

Review activities:
Air Force - 99
DLA - IS

(Project 5935-4649-000)

NOTE: The activities listed above were interested in this document as of the date of this document. Since organizations and responsibilities can change, you should verify the currency of the information above using the ASSIST Online database at <http://assist.daps.dla.mil>.