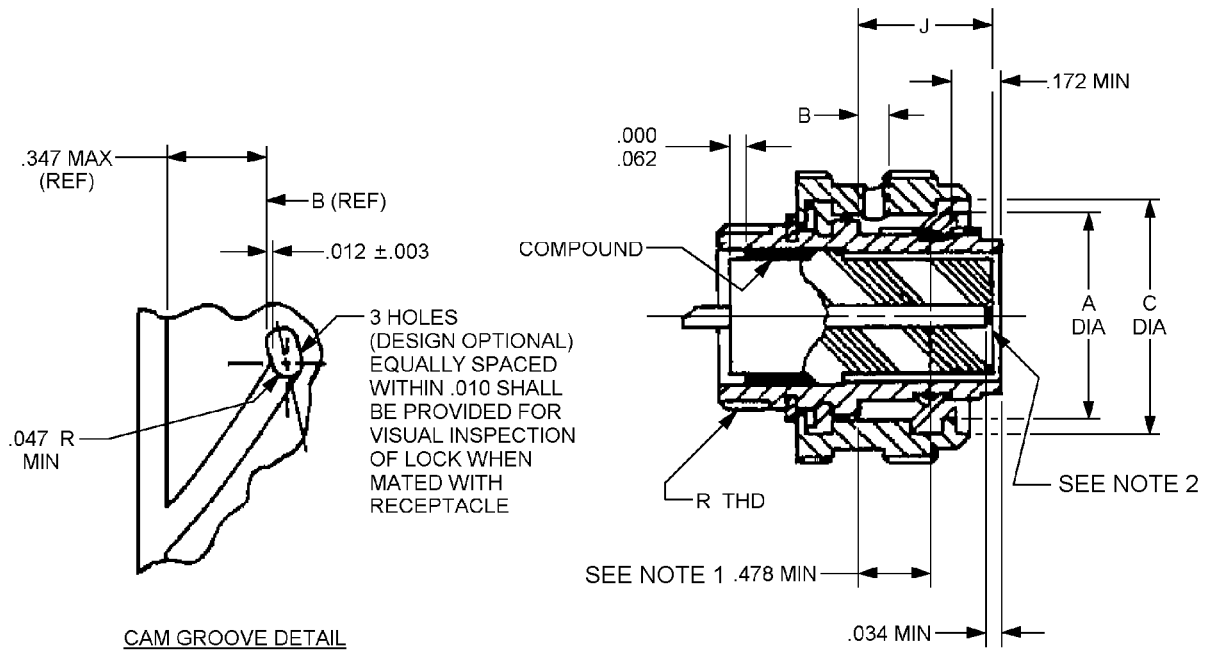






## MS20028G

CLASS T

## NOTES:

1. The point at which a gauge pin having the same basic diameter as the mating contact and a square face, touches socket contact spring.
2. Insert front surface shall be flat within .005 T.I.R.
3. Diameter D with respect to diameter S shall be concentric at MMC.
4. Diameters A and N shall be concentric within .008 T.I.R.
5. Dimensions are in inches. Metric equivalents are given for information only.
6. Normal keyway position. For other keyway positions, see MIL-DTL-27599.
7. Finish: A - Bright cadmium (see MIL-DTL-27599).  
B - Olive drab (see MIL-DTL-27599).  
F - Electroless nickel in accordance with SAE-AMS-C-26074, class 3 or 4, grade B, finish dull.  
T - Nickel flurocarbon (see MIL-DTL-27599).  
Z - Zinc nickel (see MIL-DTL-27599).

FIGURE 1. Plug - Continued.

## MS20028G

Inches	mm	Inches	mm	Inches	mm	Inches	mm
0.001	0.0254	0.011	0.280	0.06	1.524	0.347	8.814
0.002	0.051	0.012	0.305	0.062	1.575	0.375	9.525
0.003	0.076	0.016	0.406	0.100	2.54	0.478	12.14
0.004	0.102	0.034	0.864	0.172	4.370	0.578	14.68
0.005	0.127	0.047	1.194	0.188	4.775	0.594	15.09
0.010	0.254	0.052	1.321	0.204	5.182		

FIGURE 1. Plug - Continued.TABLE I. Dimensions. 1/ 2/

Shell size	A dia + .005 - .001	B ± .020	C dia + .005 - .001	D dia + .001 - .005	D <sup>1</sup> dia min	E dia ± .003	F dia min
9	.580 (14.73)	.113  (2.87)	.684 (17.37)	.437 (11.10)	.417 (10.60)	.315 (8.00)	.447 (11.35)
11	.712 (18.08)		.832 (21.13)	.565 (14.35)	.545 (13.84)	.433 (11.00)	.575 (14.60)
13	.861 (21.87)		.981 (24.92)	.677 (17.20)	.657 (16.68)	.547 (13.90)	.692 (17.57)
15	.985 (25.02)		1.106 (28.09)	.802 (20.37)	.782 (19.86)	.672 (17.07)	.817 (20.75)
17	1.110 (28.20)		1.230 (31.24)	.927 (23.54)	.907 (23.04)	.797 (20.24)	.942 (23.92)
19	1.217 (30.91)		1.347 (34.21)	1.032 (26.21)	1.012 (25.70)	.886 (22.50)	1.047 (26.60)
21	1.342 (34.08)		1.462 (37.13)	1.157 (29.38)	1.137 (28.88)	1.011 (25.68)	1.172 (29.76)
23	1.467 (37.26)		1.587 (40.31)	1.282 (32.56)	1.262 (32.05)	1.136 (28.85)	1.297 (32.94)
25	1.592 (40.44)	.152 (3.86)	1.712 (43.48)	1.407 (35.73)	1.387 (35.22)	1.260 (32.00)	1.442 (36.62)

See notes at end of table.

## MS20028G

TABLE I. Dimensions - Continued. 1/ 2/

Shell size	J ± .005 socket insert	J <sup>I</sup> ± .005 pin insert	L max	N dia + .005 - .006	Q dia max	S dia + .001 - .010
9	.576  (14.63)	.018  (.457)	.547  (13.90)	.674 (17.12)	.859 (21.82)	.482 (12.24)
11				.822 (20.87)	.984 (25.00)	.610 (15.49)
13				.972 (24.68)	1.156 (29.36)	.759 (19.27)
15				1.097 (27.86)	1.281 (32.53)	.884 (22.45)
17				1.222 (31.03)	1.406 (35.71)	1.009 (25.63)
19				1.329 (33.75)	1.516 (38.50)	1.114 (28.30)
21				1.454 (36.93)	1.641 (41.68)	1.239 (31.47)
23				1.579 (40.10)	1.766 (44.85)	1.364 (34.64)
25			.609 (15.47)	1.704 (43.28)	1.891 (48.03)	1.489 (37.82)

See notes at end of table.

## MS20028G

TABLE I. Dimensions – Continued. 1/ 2/

Shell size	W + .016 - .006	X + .016 - .001	R thread class 2A plated UNEF	AA + .005 - .006
9	.693 (17.60)	.090  (2.29)	7/16 - 28	.068  (1.73)
11	.682		9/16 - 24	
13	(17.32)		11/16 - 24	
15	.693  (17.60)		13/16 - 20	
17			15/16 - 20	
19			1 1/16 - 18	
21			1 3/16 - 18	
23			1 5/16 - 18	
25	.794 (20.16)	.137 (3.47)	1 7/16 - 18	.047 (1.20)

1/ Dimension are in inches.2/ Metric equivalents are given for information only.

## REQUIREMENTS:

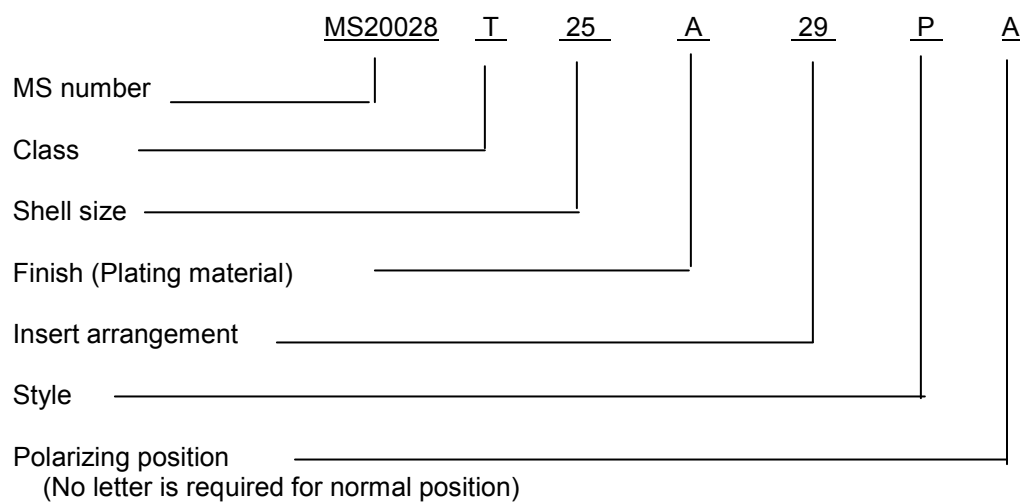
Dimensions and configurations: See figure 1 and table I.

This connector mates with MS20026 and MS20029.

Insert arrangement shall be in accordance with MIL-STD-1560.

# MS20028G

Part or Identifying Number (PIN) example:



Changes from previous issue. Marginal notations are not used in this revision to identify changes with respect to the previous issue due to the extent of the changes.

Referenced documents. In addition to MIL-DTL-27599, this document references the following:

MIL-STD-1560  
MS20026  
MS20029  
SAE-AMS-C-26074

MS20028G

CONCLUDING MATERIAL

Custodians:

Air Force - 85  
DLA - CC

Preparing activity:

DLA - CC

Review activities:

Air Force - 99  
DLA - IS

(Project 5935-2010-097)

NOTE: The activities listed above were interested in this document as of the date of this document. Since organizations and responsibilities can change, you should verify the currency of the information above using the ASSIST Online database at <https://assist.daps.dla.mil>.