

INCH - POUND

MS20027E
 20 May 2005
 SUPERSEDING
 MS20027D
 20 December 1967

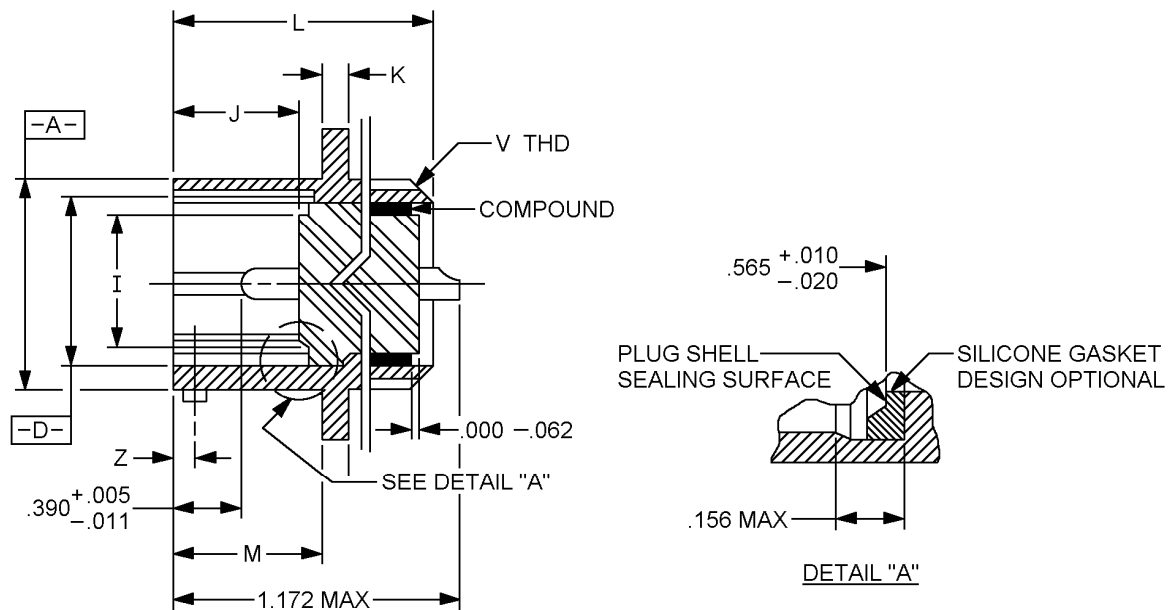
DETAIL SPECIFICATION SHEET

CONNECTORS, LINE PLUG, ELECTRICAL,
 SOLDER TYPE, BAYONET COUPLING, CLASS T, SERIES I

This specification is approved for use by all Departments
 and Agencies of the Department of Defense.

Inactive for new design after 7 December 1998.

The requirements for acquiring the product described herein
 shall consist of this specification sheet and MIL-DTL-27599.



CLASS T

FIGURE 1. Line plug.

MS20027E

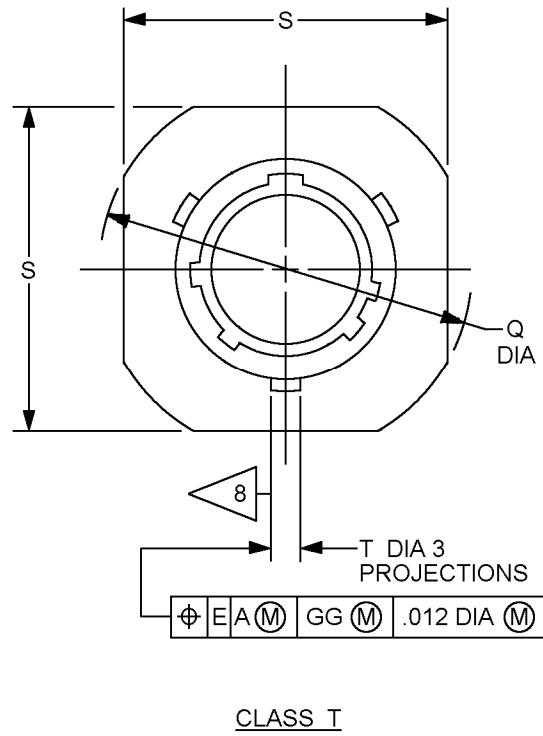
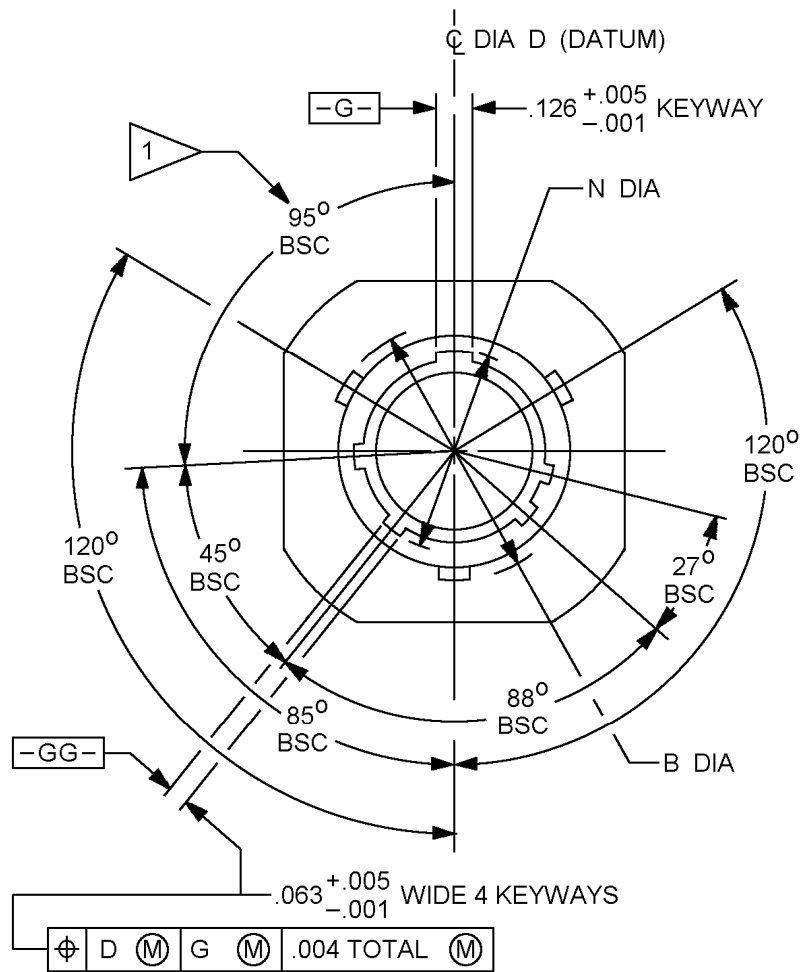


FIGURE 1. Line plug - Continued.

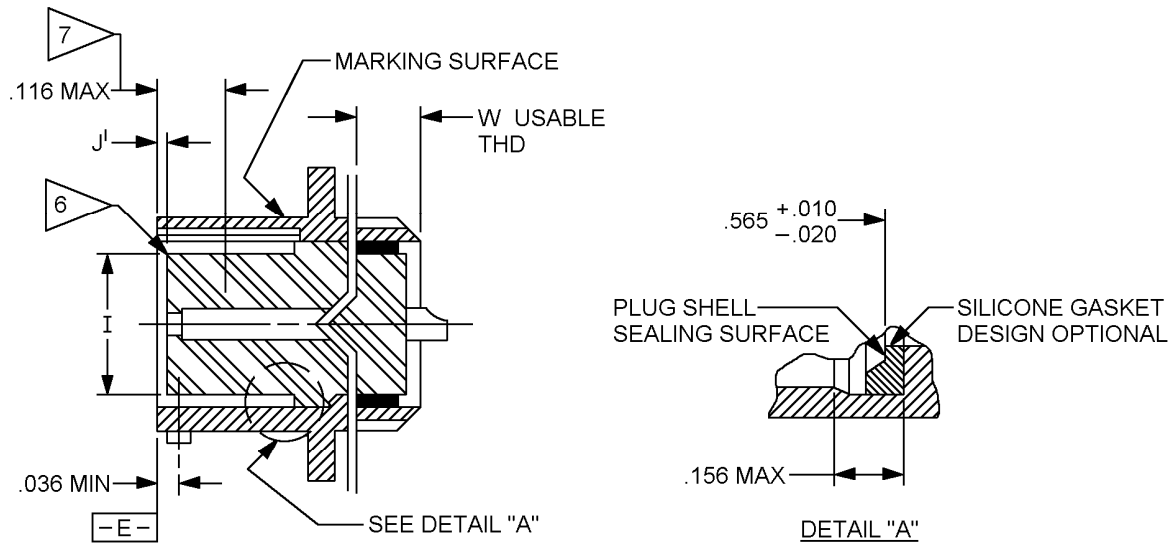
MS20027E



CLASS T

FIGURE 1. Line plug - Continued.

MS20027E

CLASS T

NOTES:

1. Normal keyway position. For other keyway positions, see MIL-DTL-27599.
2. Diameters A, D and Q shall be concentric within $.015 \text{ T.I.R.}$
3. Diameters D and I shall be concentric within $.005 \text{ T.I.R.}$ at MMC.
4. Diameter A with respect to diameter B, and diameter D with respect to diameter N, shall be concentric at MMC.
5. Dimensions are in inches. Metric equivalents are in parenthesis and given for information only.
6. Insert front surface shall be flat within $.005 \text{ T.I.R.}$
7. The point at which a gauge pin having the same basic diameter as the mating contact and a square face, touches socket contact spring.
8. The gauge features for GG shall be CC smaller than their MMC size.

FIGURE 1. Line plug - Continued.

MS20027E

Inches	mm	Inches	mm	Inches	mm	Inches	mm
0.001	0.0254	0.012	0.305	0.063	1.60	0.39	9.91
0.004	0.102	0.02	0.508	0.116	2.95	0.565	14.35
0.005	0.127	0.036	0.91	0.126	3.20	1.172	29.78
0.01	0.254	0.062	1.575				
0.011	0.28						

FIGURE 1. Line plug - Continued.Table 1. Dimensions.

Shell size	A dia + .001 - .005	B dia + .000 - .016	D dia + .005 - .001	I dia ± .005	J ± .005 pin insert	J ¹ ± .005 socket insert
9	.572 (14.53)	.662 (16.81)	.442 (11.23)	.296 (7.52)	.576 (14.63)	.020 (.51)
11	.700 (17.78)	.810 (20.57)	.570 (14.48)	.413 (10.49)		
13	.850 (21.60)	.960 (24.38)	.687 (17.45)	.527 (13.38)		
15	.975 (24.76)	1.085 (27.56)	.812 (20.62)	.652 (16.56)		
17	1.100 (27.94)	1.210 (30.73)	.937 (23.80)	.777 (19.73)		
19	1.207 (30.66)	1.317 (33.45)	1.042 (26.46)	.866 (22.00)		
21	1.332 (33.83)	1.442 (36.63)	1.167 (29.64)	.991 (25.17)		
23	1.457 (37.00)	1.567 (39.80)	1.292 (32.82)	1.116 (28.34)		
25	1.582 (40.20)	1.692 (42.97)	1.417 (36.00)	1.241 (31.52)		

MS20027E

Table 1. Dimensions - Continued.

Shell size	K + .015 - .000	L max	M + .000 - .005	N dia + .005 - .006	Q dia max	S dia ± .020
9	.085 (2.16)	1.094 (27.78)	.632 (16.05)	.492 (12.49)	1.094 (27.79)	.938 (23.82)
11				.620 (15.75)	1.188 (30.17)	1.031 (26.18)
13				.769 (19.53)	1.281 (32.54)	1.125 (28.57)
15				.894 (22.70)	1.375 (34.92)	1.219 (30.96)
17				1.019 (25.88)	1.469 (37.31)	1.312 (33.32)
19				1.124 (28.55)	1.594 (40.48)	1.438 (36.52)
21	.115 (2.92)		.602 (15.30)	1.249 (31.50)	1.719 (43.66)	1.562 (39.67)
23				1.374 (34.90)	1.844 (46.84)	1.688 (42.87)
25				1.499 (38.07)	1.969 (50.01)	1.812 (46.02)

MS20027E

Table 1. Dimensions - Continued.

Shell SIZE	T dia + .006 - .002	W min full thread	Z BSC	V thread class 2A plated UNEF	CC
9	.078 (1.98)	.250 (6.35)	.100 (2.54)	7/16 - 28	.010 (.254)
11				9/16 - 24	
13				11/16 - 24	
15				13/16 - 20	
17				15/16 - 20	
19				1 1/16 - 18	
21				1 3/16 - 18	
23				1 5/16 - 18	
25	.125 (3.17)		.109 (2.77)	1 7/16 - 18	

REQUIREMENTS

Dimensions and configurations: See figure 1 and table 1.

This connector mates with MS20026 and MS20029.

Insert arrangement shall be in accordance with MIL-STD-1560.

MS20027E

Part or Identifying Number (PIN) example:

	<u>MS20027</u>	<u>T</u>	<u>21</u>	<u>A</u>	<u>41</u>	<u>P</u>	<u>A</u>
MS number	_____						
Class	_____						
Shell size	_____						
Finish (color)	_____						
Insert arrangement	_____						
Style	_____						
Polarizing position	_____						
(No letter is required for normal position)							

Changes from previous issue. Marginal notations are not used in this revision to identify changes with respect to the previous issue due to the extent of the changes.

Reference documents. In addition to MIL-DTL-27599, this document references the following:

MIL-STD-1560
MS20026
MS20029

CONCLUDING MATERIAL

Custodians:
Air Force - 11
DLA - CC

Preparing activity:
DLA - CC

Review activities:
Air Force - 99

(Project 5935-4647-000)

NOTE: The activities listed above were interested in this document as of the date of this document. Since organizations and responsibilities can change, you should verify the currency of the information above using the ASSIST Online database at <http://assist.daps.dla.mil>.