

INCH - POUND

MS20026F
 31 August 2010
 SUPERSEDING
 MS20026E
 20 May 2005

DETAIL SPECIFICATION SHEET

CONNECTORS, RECEPTACLE, ELECTRICAL, WALL MOUNT,
 SOLDER TYPE, BAYONET COUPLING, CLASS T, SERIES 1

Inactive for new design after 7 December 1998.

This specification is approved for use by all Departments
 and Agencies of the Department of Defense.

The requirements for acquiring the product described herein
 shall consist of this specification sheet and MIL-DTL-27599.

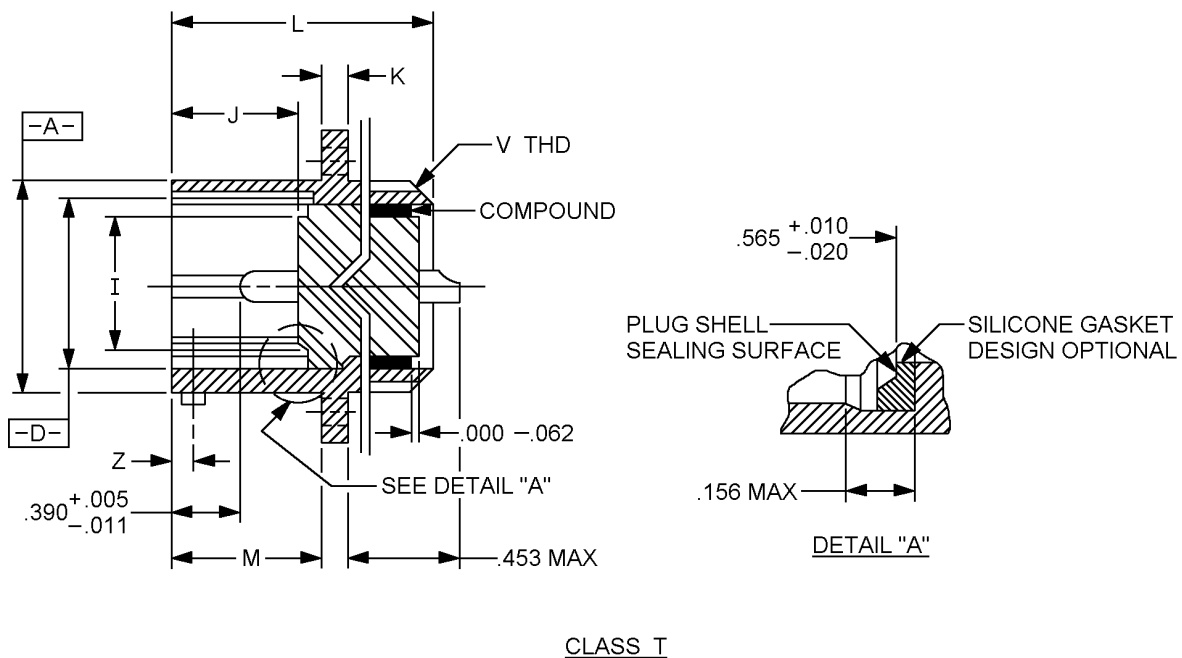
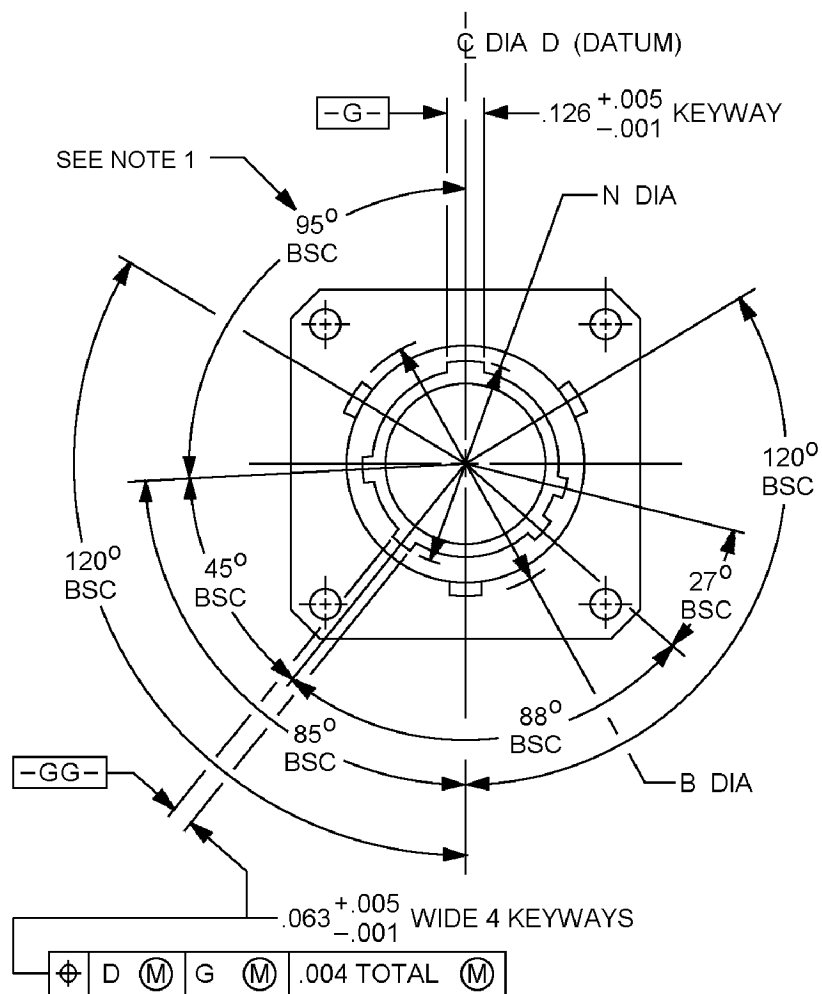


FIGURE 1. Receptacle, wall mount.

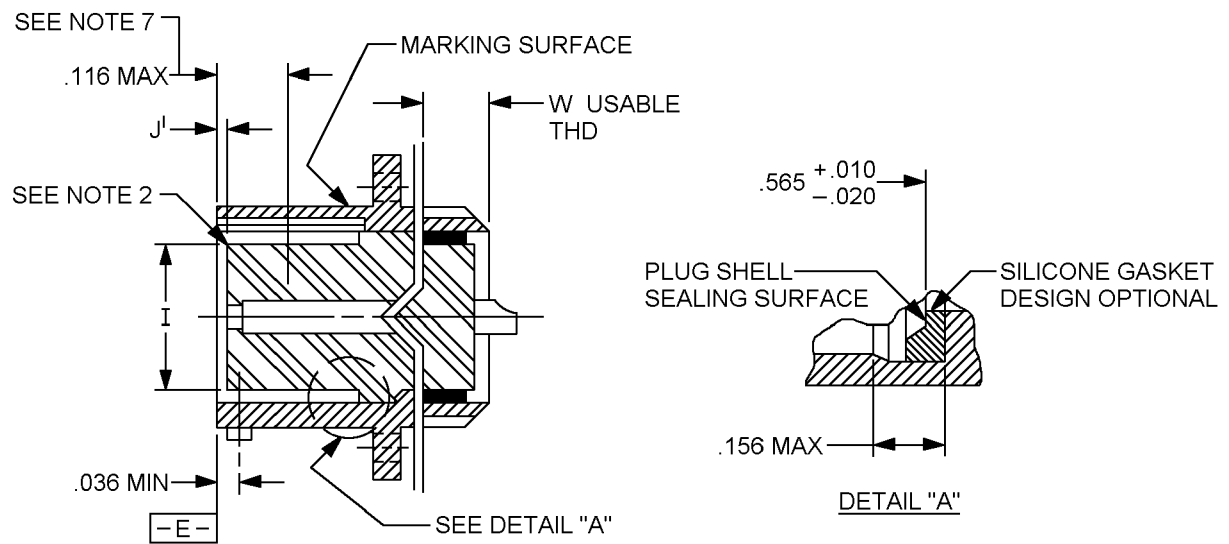
MS20026F



CLASS T

FIGURE 1. Receptacle, wall mount - Continued.

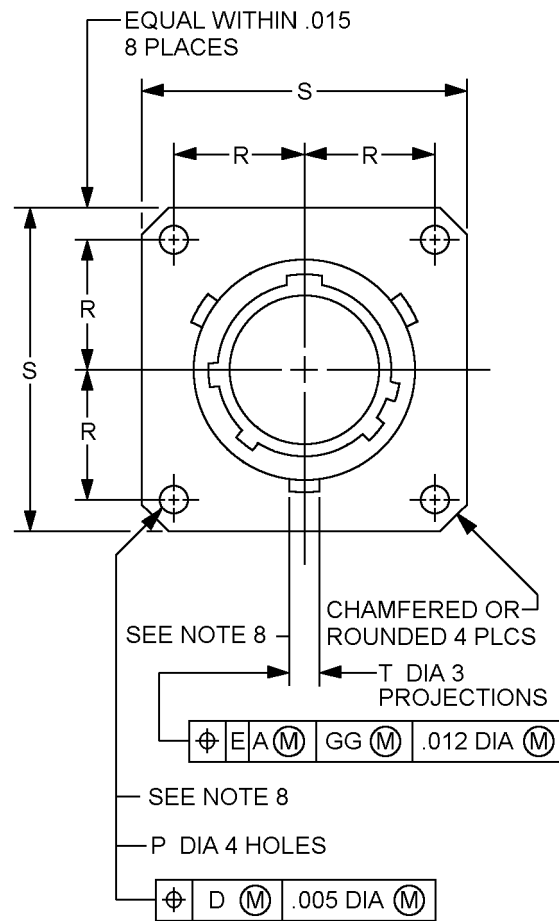
MS20026F



CLASS T

FIGURE 1. Receptacle, wall mount - Continued.

MS20026F



CLASS T

NOTES:

1. Normal keyway position. For other keyway positions, see MIL-DTL-27599.
2. Insert front surface shall be flat within .005 total indicator reading.
3. Diameters A & D shall be concentric within .015 T.I.R.
4. Diameters D & J shall be concentric within .005 T.I.R. at MMC.
5. Diameter A with respect to diameter B, and diameter D with respect to diameter N, shall be concentric at MMC.
6. Dimensions are in inches. Metric equivalents are given for information only.
7. The point at which a gauge pin having the same basic diameter as the mating contact and a square face, touches socket contact spring.
8. The gauge features for GG shall be CC smaller than their MMC size at basic location.

FIGURE 1. Receptacle, wall mount - Continued.

MS20026F

Inches	mm	Inches	mm	Inches	mm	Inches	mm
.001	.0254	.012	.305	.063	1.60	.39	9.91
.004	.1016	.015	.38	.116	2.95	.453	11.50
.005	.127	.02	.51	.126	3.20	.565	14.35
.01	.254	.036	.914	.156	3.96		
.011	.280	.062	1.57				

FIGURE 1. Receptacle, wall mount - Continued.TABLE I. Dimensions. 1/ 2/

Shell size	A dia + .001 - .005	B dia + .000 - .016	D dia + .005 - .001	I dia ± .005	J ± .005 pin insert	J ^I ± .005 socket insert
9	.572 (14.53)	.662 (16.81)	.442 (11.23)	.296 (7.52)	.576 (14.63)	.020 (.51)
11	.700 (17.78)	.810 (20.57)	.570 (14.48)	.413 (10.49)		
13	.850 (21.60)	.960 (24.38)	.687 (17.45)	.527 (13.38)		
15	.975 (24.76)	1.085 (27.56)	.812 (20.62)	.652 (16.56)		
17	1.100 (27.94)	1.210 (30.73)	.937 (23.80)	.777 (19.73)		
19	1.207 (30.66)	1.317 (33.45)	1.042 (26.46)	.866 (22.00)		
21	1.332 (33.83)	1.442 (36.63)	1.167 (29.64)	.991 (25.17)		
23	1.457 (37.00)	1.567 (39.80)	1.292 (32.82)	1.116 (28.34)		
25	1.582 (40.20)	1.692 (42.97)	1.417 (36.00)	1.241 (31.52)		

See notes at end of table.

MS20026F

TABLE I. Dimensions - Continued. 1/ 2/

Shell size	K + .015 - .000	L max	M + .000 - .005	N dia + .005 - .006	P dia + .010 - .005	R BSC
9	.085 (2.16)	1.094 (27.78)	.632 (16.05)	.492 (12.49)	.128 (3.25)	.3595 (9.1313)
11				.620 (15.75)		.406 (10.31)
13				.769 (19.53)		.453 (11.50)
15				.894 (22.70)		.4845 (12.30)
17				1.019 (25.88)		.531 (13.48)
19				1.124 (28.55)		.578 (14.68)
21	.115 (2.92)		.602 (15.30)	1.249 (31.72)	.147 (3.73)	.625 (15.87)
23				1.374 (34.90)		.6875 (17.46)
25				1.499 (38.07)		.750 (19.05)

See notes at end of table.

MS20026F

TABLE I. Dimensions – Continued. 1/ 2/

Shell size	S ± .020	T dia + .006 - .002	W min full thread	Z BSC	V thread class 2A plated UNEF	CC
9	.938 (23.82)	.078 (1.98)	.250 (6.35)	.100 (2.54)	7/16 - 28	.010 (.254)
11	1.031 (26.18)				9/16 - 24	
13	1.125 (28.57)				11/16 - 24	
15	1.219 (30.96)				13/16 - 20	
17	1.312 (33.32)				15/16 - 20	
19	1.438 (36.52)				1 1/16 - 18	
21	1.562 (39.67)				1 3/16 - 18	
23	1.688 (42.87)				1 5/16 - 18	
25	1.812 (46.02)	.125 (3.175)		.109 (2.76)	1 7/16 - 18	

1/ Dimensions are in inches.2/ Metric equivalents are given for information only.

REQUIREMENTS

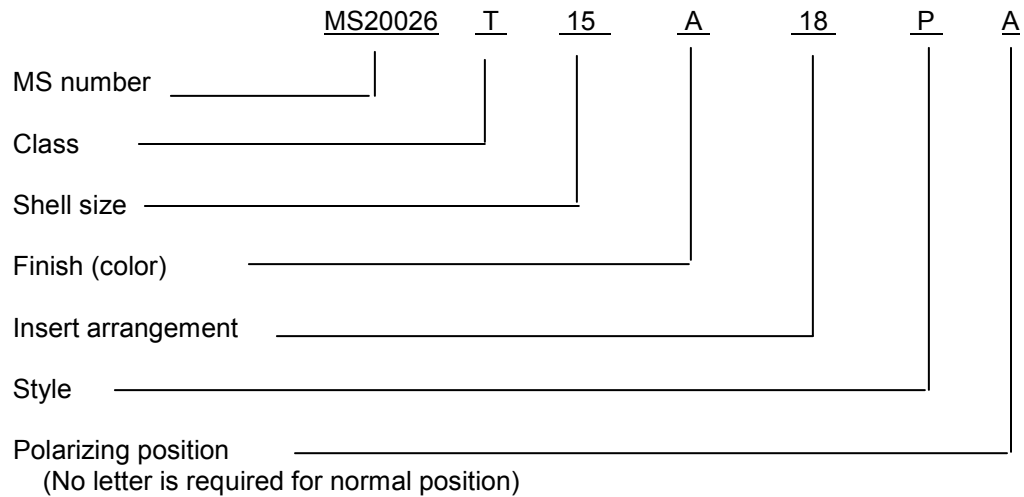
Dimensions and configurations: See figure 1 and table I.

This connector mates with MS20027 and MS20028.

Insert arrangement shall be in accordance with MIL-STD-1560.

MS20026F

Part or Identifying Number (PIN) example:



Changes from previous issue. Marginal notations are not used in this revision to identify changes with respect to the previous issue due to the extent of the changes.

Referenced documents. In addition to MIL-DTL-27599, this document references the following:

MIL-STD-1560
MS20027
MS20028

CONCLUDING MATERIAL

Custodians:
Air Force - 85
DLA - CC

Preparing activity:
DLA - CC

Review activities:
Air Force - 99
DLA - IS

(Project 5935-2010-096)

NOTE: The activities listed above were interested in this document as of the date of this document. Since organizations and responsibilities can change, you should verify the currency of the information above using the ASSIST Online database at <https://assist.daps.dla.mil>.