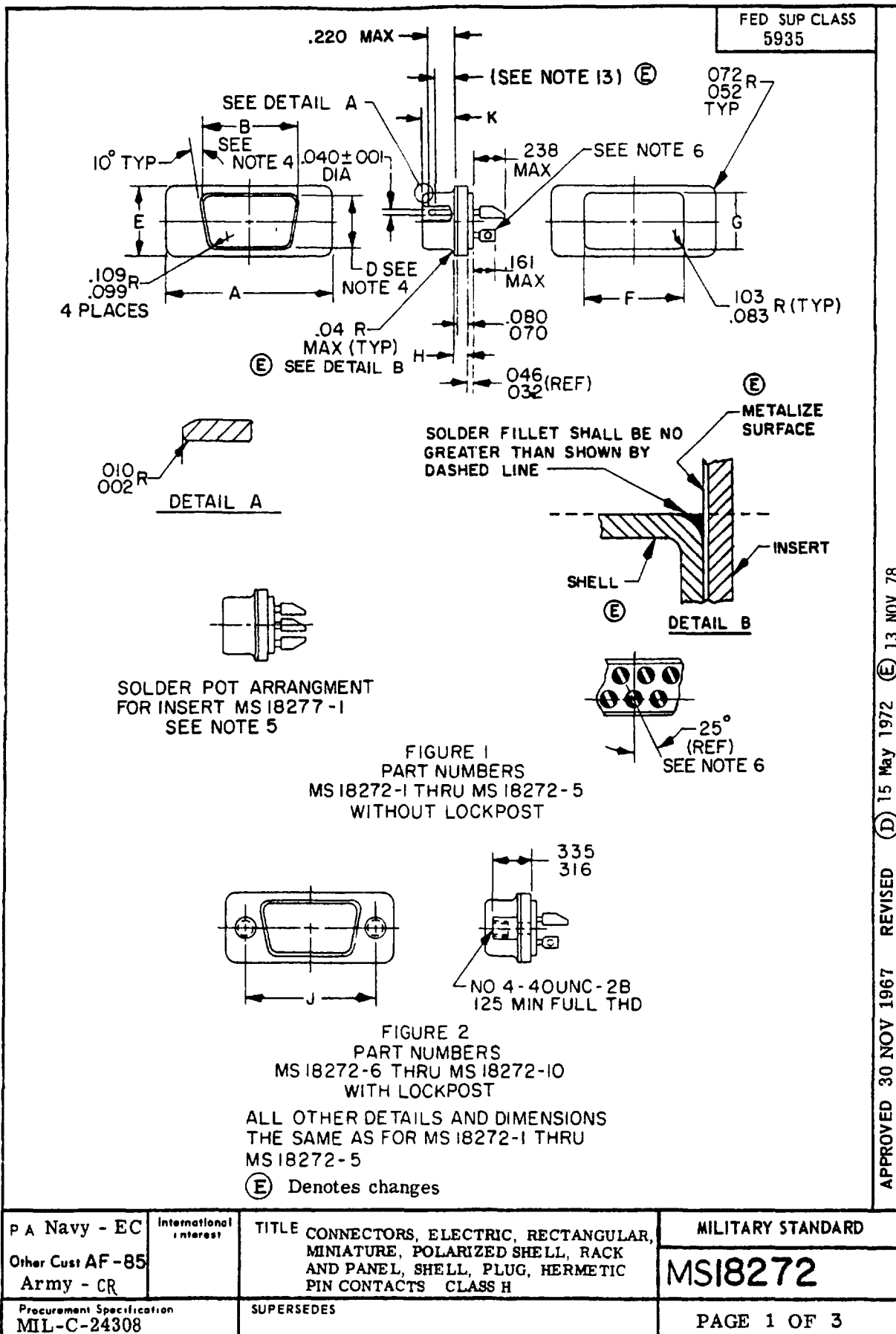


User activities  
Army - ME, AT  
Navy - MC, CG  
Air Force

Reviewer activities  
Army - MJ  
Navy - AS, SH  
Air Force - 11, 99  
DLA - ES

This military standard is approved for use by all Departments and Agencies of the Department of Defense. Selection for all new engineering and design applications and for repetitive use shall be made from this document when applicable.



APPROVED 30 NOV 1967 REVISED (D) 15 May 1972 (E) 13 NOV 78

P A Navy - EC	International interest	TITLE CONNECTORS, ELECTRIC, RECTANGULAR, MINIATURE, POLARIZED SHELL, RACK AND PANEL, SHELL, PLUG, HERMETIC PIN CONTACTS CLASS H	MILITARY STANDARD
Other Cust AF-85 Army - CR			MS18272
Procurement Specification MIL-C-24308		SUPERSEDES	PAGE 1 OF 3

This military standard is approved for use by all Departments and Agencies of the Department of Defense. Selection for all new engineering and design applications and for repetitive use shall be made from this document when applicable

Review activities  
Army - MI  
Navy - AS, SH  
Air Force - II, 99  
DLA - ES

User activities  
Army - ME, AT  
Navy - MC, CG  
Air Force -

P.A Navy - EC Other Cust AF-85 Army - CR		International Interest	TITLE CONNECTORS, ELECTRIC, RECTANGULAR, MINIATURE, POLARIZED SHELL, RACK AND PANEL, SHELL, PLUG, HERMETIC PIN CONTACTS, CLASS H		MILITARY STANDARD <b>MSI8272</b>		FED SUP CLASS 5935
Procurement Specification MIL-C-24308		SUPERSEDES:		PAGE 2 OF 3			

MS NUMBER	SHELL SIZE	DIMENSION										K
		A	B	✓ D	E	F	G	H	J			
MSI8272-1	1	1.228(31.19)	.672(17.07)	.335 (8.51)	.508(12.90)	.735(18.67)	.379 (9.63)	.104(2.64)			241(6 12)	
MSI8272-2	2	1.198(30.43)	.662(16.81)	.325 (8.26)	.488(12.40)	.715(18.16)	.359 (9.12)	.084(2.13)			229(5 82)	
MSI8272-3	3	1.566(39.52)	.998(25.35)	.335 (8.51)	.508(12.90)	.942(23.93)	.379 (9.63)	.104(2.64)			241(6 12)	
MSI8272-4	4	1.526(38.76)	.988(25.10)	.325 (8.26)	.488(12.40)	.922(23.42)	.359 (9.12)	.084(2.13)			229(5 82)	
MSI8272-5	5	2.103(53.42)	1.540(39.12)	.335 (8.51)	.508(12.90)	1.489(37.82)	.379 (9.63)	.113(2.87)			236(5 99)	
MSI8272-6	6	2.073(52.65)	1.530(38.86)	.325 (8.26)	.488(12.40)	1.469(37.31)	.359 (9.12)	.093(2.36)			224(5 69)	
MSI8272-7	7	2.744(69.70)	2.188(55.58)	.335 (8.51)	.508(12.90)	2.135(54.23)	.379 (9.63)	.113(2.87)			236(5 99)	
MSI8272-8	8	2.714(68.94)	2.178(55.32)	.325 (8.26)	.488(12.40)	2.115(53.72)	.359 (9.12)	.093(2.36)			224(5 69)	
MSI8272-9	9	2.620(66.55)	2.074(52.68)	.431(10.95)	.600(15.24)	2.010(51.05)	.510(12.95)	.113(2.87)			236(5 99)	
MSI8272-10	10	2.228(31.19)	.672(17.07)	.335 (8.51)	.508(12.90)	.735(18.67)	.379 (9.63)	.104(2.64)			241(6 12)	
		1.198(30.43)	.662(16.81)	.325 (8.26)	.488(12.40)	.715(18.16)	.359 (9.12)	.084(2.13)			229(5 82)	
		1.566(39.52)	.998(25.35)	.335 (8.51)	.508(12.90)	.942(23.93)	.379 (9.63)	.104(2.64)			241(6 12)	
		1.526(38.76)	.988(25.10)	.325 (8.26)	.488(12.40)	.922(23.42)	.359 (9.12)	.084(2.13)			229(5 82)	
		2.103(53.42)	1.540(39.12)	.335 (8.51)	.508(12.90)	1.489(37.82)	.379 (9.63)	.113(2.87)			236(5 99)	
		2.073(52.65)	1.530(38.86)	.325 (8.26)	.488(12.40)	1.469(37.31)	.359 (9.12)	.093(2.36)			224(5 69)	
		2.744(69.70)	2.188(55.58)	.335 (8.51)	.508(12.90)	2.135(54.23)	.379 (9.63)	.113(2.87)			236(5 99)	
		2.714(68.94)	2.178(55.32)	.325 (8.26)	.488(12.40)	2.115(53.72)	.359 (9.12)	.093(2.36)			224(5 69)	
		2.620(66.55)	2.074(52.68)	.431(10.95)	.600(15.24)	2.010(51.05)	.510(12.95)	.113(2.87)			236(5 99)	
		2.228(31.19)	.672(17.07)	.335 (8.51)	.508(12.90)	.735(18.67)	.379 (9.63)	.104(2.64)			241(6 12)	
		1.198(30.43)	.662(16.81)	.325 (8.26)	.488(12.40)	.715(18.16)	.359 (9.12)	.084(2.13)			229(5 82)	
		1.566(39.52)	.998(25.35)	.335 (8.51)	.508(12.90)	.942(23.93)	.379 (9.63)	.104(2.64)			241(6 12)	
		1.526(38.76)	.988(25.10)	.325 (8.26)	.488(12.40)	.922(23.42)	.359 (9.12)	.084(2.13)			229(5 82)	
		2.103(53.42)	1.540(39.12)	.335 (8.51)	.508(12.90)	1.489(37.82)	.379 (9.63)	.113(2.87)			236(5 99)	
		2.073(52.65)	1.530(38.86)	.325 (8.26)	.488(12.40)	1.469(37.31)	.359 (9.12)	.093(2.36)			224(5 69)	
		2.744(69.70)	2.188(55.58)	.335 (8.51)	.508(12.90)	2.135(54.23)	.379 (9.63)	.113(2.87)			236(5 99)	
		2.714(68.94)	2.178(55.32)	.325 (8.26)	.488(12.40)	2.115(53.72)	.359 (9.12)	.093(2.36)			224(5 69)	
		2.620(66.55)	2.074(52.68)	.431(10.95)	.600(15.24)	2.010(51.05)	.510(12.95)	.113(2.87)			236(5 99)	
		2.228(31.19)	.672(17.07)	.335 (8.51)	.508(12.90)	.735(18.67)	.379 (9.63)	.104(2.64)			241(6 12)	
		1.198(30.43)	.662(16.81)	.325 (8.26)	.488(12.40)	.715(18.16)	.359 (9.12)	.084(2.13)			229(5 82)	
		1.566(39.52)	.998(25.35)	.335 (8.51)	.508(12.90)	.942(23.93)	.379 (9.63)	.104(2.64)			241(6 12)	
		1.526(38.76)	.988(25.10)	.325 (8.26)	.488(12.40)	.922(23.42)	.359 (9.12)	.084(2.13)			229(5 82)	
		2.103(53.42)	1.540(39.12)	.335 (8.51)	.508(12.90)	1.489(37.82)	.379 (9.63)	.113(2.87)			236(5 99)	
		2.073(52.65)	1.530(38.86)	.325 (8.26)	.488(12.40)	1.469(37.31)	.359 (9.12)	.093(2.36)			224(5 69)	
		2.744(69.70)	2.188(55.58)	.335 (8.51)	.508(12.90)	2.135(54.23)	.379 (9.63)	.113(2.87)			236(5 99)	
		2.714(68.94)	2.178(55.32)	.325 (8.26)	.488(12.40)	2.115(53.72)	.359 (9.12)	.093(2.36)			224(5 69)	
		2.620(66.55)	2.074(52.68)	.431(10.95)	.600(15.24)	2.010(51.05)	.510(12.95)	.113(2.87)			236(5 99)	
		2.228(31.19)	.672(17.07)	.335 (8.51)	.508(12.90)	.735(18.67)	.379 (9.63)	.104(2.64)			241(6 12)	
		1.198(30.43)	.662(16.81)	.325 (8.26)	.488(12.40)	.715(18.16)	.359 (9.12)	.084(2.13)			229(5 82)	
		1.566(39.52)	.998(25.35)	.335 (8.51)	.508(12.90)	.942(23.93)	.379 (9.63)	.104(2.64)			241(6 12)	
		1.526(38.76)	.988(25.10)	.325 (8.26)	.488(12.40)	.922(23.42)	.359 (9.12)	.084(2.13)			229(5 82)	
		2.103(53.42)	1.540(39.12)	.335 (8.51)	.508(12.90)	1.489(37.82)	.379 (9.63)	.113(2.87)			236(5 99)	
		2.073(52.65)	1.530(38.86)	.325 (8.26)	.488(12.40)	1.469(37.31)	.359 (9.12)	.093(2.36)			224(5 69)	
		2.744(69.70)	2.188(55.58)	.335 (8.51)	.508(12.90)	2.135(54.23)	.379 (9.63)	.113(2.87)			236(5 99)	
		2.714(68.94)	2.178(55.32)	.325 (8.26)	.488(12.40)	2.115(53.72)	.359 (9.12)	.093(2.36)			224(5 69)	
		2.620(66.55)	2.074(52.68)	.431(10.95)	.600(15.24)	2.010(51.05)	.510(12.95)	.113(2.87)			236(5 99)	
		2.228(31.19)	.672(17.07)	.335 (8.51)	.508(12.90)	.735(18.67)	.379 (9.63)	.104(2.64)			241(6 12)	
		1.198(30.43)	.662(16.81)	.325 (8.26)	.488(12.40)	.715(18.16)	.359 (9.12)	.084(2.13)			229(5 82)	
		1.566(39.52)	.998(25.35)	.335 (8.51)	.508(12.90)	.942(23.93)	.379 (9.63)	.104(2.64)			241(6 12)	
		1.526(38.76)	.988(25.10)	.325 (8.26)	.488(12.40)	.922(23.42)	.359 (9.12)	.084(2.13)			229(5 82)	
		2.103(53.42)	1.540(39.12)	.335 (8.51)	.508(12.90)	1.489(37.82)	.379 (9.63)	.113(2.87)			236(5 99)	
		2.073(52.65)	1.530(38.86)	.325 (8.26)	.488(12.40)	1.469(37.31)	.359 (9.12)	.093(2.36)			224(5 69)	
		2.744(69.70)	2.188(55.58)	.335 (8.51)	.508(12.90)	2.135(54.23)	.379 (9.63)	.113(2.87)			236(5 99)	
		2.714(68.94)	2.178(55.32)	.325 (8.26)	.488(12.40)	2.115(53.72)	.359 (9.12)	.093(2.36)			224(5 69)	
		2.620(66.55)	2.074(52.68)	.431(10.95)	.600(15.24)	2.010(51.05)	.510(12.95)	.113(2.87)			236(5 99)	
		2.228(31.19)	.672(17.07)	.335 (8.51)	.508(12.90)	.735(18.67)	.379 (9.63)	.104(2.64)			241(6 12)	
		1.198(30.43)	.662(16.81)	.325 (8.26)	.488(12.40)	.715(18.16)	.359 (9.12)	.084(2.13)			229(5 82)	
		1.566(39.52)	.998(25.35)	.335 (8.51)	.508(12.90)	.942(23.93)	.379 (9.63)	.104(2.64)			241(6 12)	
		1.526(38.76)	.988(25.10)	.325 (8.26)	.488(12.40)	.922(23.42)	.359 (9.12)	.084(2.13)			229(5 82)	
		2.103(53.42)	1.540(39.12)	.335 (8.51)	.508(12.90)	1.489(37.82)	.379 (9.63)	.113(2.87)			236(5 99)	
		2.073(52.65)	1.530(38.86)	.325 (8.26)	.488(12.40)	1.469(37.31)	.359 (9.12)	.093(2.36)			224(5 69)	
		2.744(69.70)	2.188(55.58)	.335 (8.51)	.508(12.90)	2.135(54.23)	.379 (9.63)	.113(2.87)			236(5 99)	
		2.714(68.94)	2.178(55.32)	.325 (8.26)	.488(12.40)	2.115(53.72)	.359 (9.12)	.093(2.36)			224(5 69)	
		2.620(66.55)	2.074(52.68)	.431(10.95)	.600(15.24)	2.010(51.05)	.510(12.95)	.113(2.87)			236(5 99)	
		2.228(31.19)	.672(17.07)	.335 (8.51)	.508(12.90)	.735(18.67)	.379 (9.63)	.104(2.64)			241(6 12)	
		1.198(30.43)	.662(16.81)	.325 (8.26)	.488(12.40)	.715(18.16)	.359 (9.12)	.084(2.13)			229(5 82)	
		1.566(39.52)	.998(25.35)	.335 (8.51)	.508(12.90)	.942(23.93)	.379 (9.63)	.104(2.64)			241(6 12)	
		1.526(38.76)	.988(25.10)	.325 (8.26)	.488(12.40)	.922(23.42)	.359 (9.12)	.084(2.13)			229(5 82)	
		2.103(53.42)	1.540(39.12)	.335 (8.51)	.508(12.90)	1.489(37.82)	.379 (9.63)	.113(2.87)			236(5 99)	
		2.073(52.65)	1.530(38.86)	.325 (8.26)	.488(12.40)	1.469(37.31)	.359 (9.12)	.093(2.36)			224(5 69)	
		2.744(69.70)	2.188(55.58)	.335 (8.51)	.508(12.90)	2.135(54.23)	.379 (9.63)	.113(2.87)			236(5 99)	
		2.714(68.94)	2.178(55.32)	.325 (8.26)	.488(12.40)	2.115(53.72)	.359 (9.12)	.093(2.36)			224(5 69)	
		2.620(66.55)	2.074(52.68)	.431(10.95)	.600(15.24)	2.010(51.05)	.510(12.95)	.113(2.87)			236(5 99)	
		2.228(31.19)	.672(17.07)	.335 (8.51)	.508(12.90)	.735(18.67)	.379 (9.63)	.104(2.64)			241(6 12)	
		1.198(30.43)	.662(16.81)	.325 (8.26)	.488(12.40)	.715(18.16)	.359 (9.12)	.084(2.13)			229(5 82)	
		1.566(39.52)	.998(25.35)	.335 (8.51)	.508(12.90)	.942(23.93)	.379 (9.63)	.104(2.64)			241(6 12)	
		1.526(38.76)	.988(25.10)	.325 (8.26)	.488(12.40)	.922(23.42)	.359 (9.12)	.084(2.13)			229(5 82)	
		2.103(53.42)	1.540(39.12)	.335 (8.51)	.508(12.90)	1.489(37.82)	.379 (9.63)	.113(2.87)			236(5 99)	
		2.073(52.65)	1.530(38.86)	.325 (8.26)	.488(12.40)	1.469(37.31)	.359 (9.12)	.093(2.36)			224(5 69)	
		2.744(69.70)	2.188(55.58)	.335 (8.51)	.508(12.90)	2.135(54.23)	.379 (9.63)	.113(2.87)			236(5 99)	

FED SUP CLASS  
5935Army ME, AT  
Navy MC, CG  
Air Force

User activities

Army - MI  
Navy - AS, SH  
Air Force - 11,99  
DLA - ES

Review activities

This military standard is approved for use by all Departments and Agencies of the Department of Defense. Selection for all new engineering and design applications and for repetitive use shall be made from this document when applicable.

## NOTES

- 1 Dimensions are in inches.
- 2 Metric equivalents are in parentheses
- 3 Metric equivalents are given for general information only and are based upon 1 00 inch = 25.4 mm
- 4 Dimensions "B" and "D" are calculated at the start of corner radius ( .04 (1.0 mm) maximum) apply draft minus.
- 5 In insert arrangements MS 18273-1, MS 18274-1, MS 18275-1 and MS 18276-1, the contact solder pots open toward the top in the upper row and toward the bottom in the lower row. In insert MS 18277-1 the two top rows face up and the lower row opens toward the bottom. The angular position may vary  $\pm 20^\circ$  from vertical centerline
- 6 Size 20 contact eyelet terminal flats are rotated  $25^\circ \pm 5^\circ$  as shown
- 7 Connector shell is solder mount type.
- 8 Documents shall be of the issue in effect on date of invitation for bid.
- 9 For design feature purposes, this standard takes precedence over procurement documents referenced herein
- 10 Patent notice The Government has a royalty free license under the U. S. Patents listed below for the benefit of manufacturers of the items disclosed and described herein, either for the Government or for use in equipment delivered to the Government.

## Patent Numbers

2790153 expires April 23, 1974  
 3110093 expires November 12, 1980  
 3158424 expires November 24, 1981

- 11 Copyright notice All information disclosed in this military standard which is or may be copyrighted by ITT Cannon Electric is reproduced herein with the express permission of the copyright owner
- ⑤ 12 "D" dimension for shell size 5 will change from 441 - 431 (11.20 - 10.95 mm) to 446 - 436 (11.33 - 11.07 mm) effective 1 July 1980.
- ⑤ 13 Dimensions are 155 minimum full pin diameter extension (sizes 3 thru 6) and 164 minimum full pin diameter extension (sizes 1 & 2)

APPROVED 30 NOV 1967 REVISED ⑤ FOR CHANGES SEE PAGES 1,2 &amp; 3

PA Navy - EC  Other Cust AF-85  Army - CR	International interest	TITLE CONNECTORS, ELECTRIC, RECTANGULAR, MINIATURE, POLARIZED SHELL, RACK AND PANEL, SHELL, PLUG, HERMETIC PIN CONTACTS, CLASS H	MILITARY STANDARD
Procurement Specification MIL-C-24308			MS18272  PAGE 3 OF 3