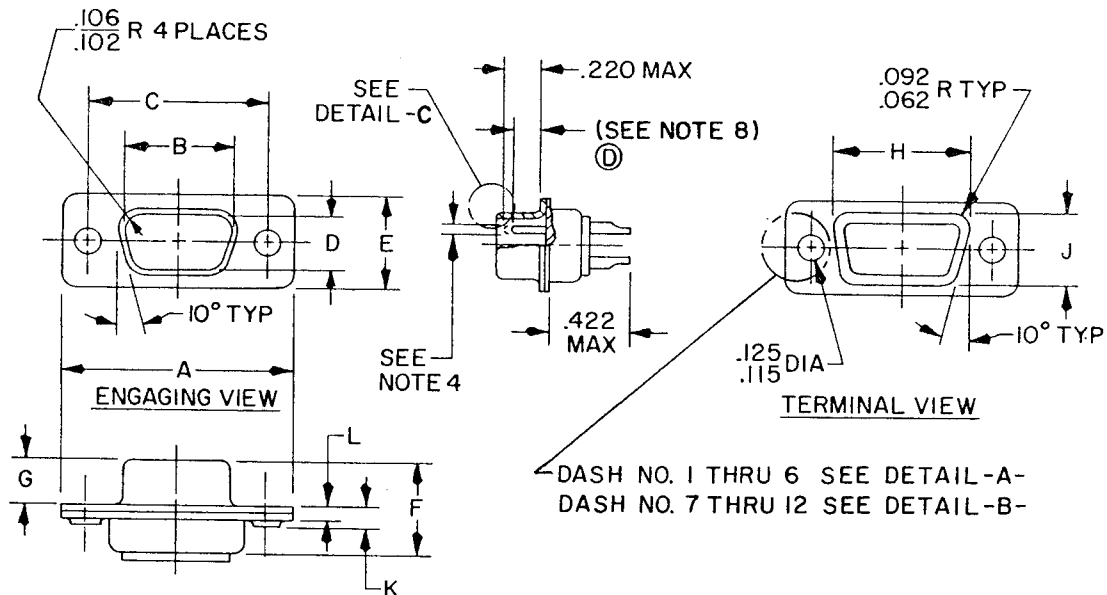


This military standard is approved for use by all Departments and Agencies of the Department of Defense. Selection for all new engineering and design applications and for repetitive use shall be made from this document when applicable.

Reviewer activities: Army-MI
Navy-AS
Air Force-11,99
DLA-ES

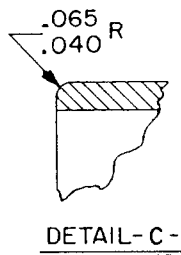
User activities: Army-AT
Navy-MC,CG,SH
Air Force

FED. SUP CLASS
5935

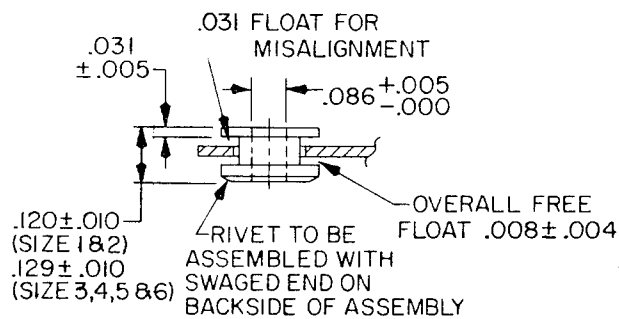


ALTERNATE METHOD
OF SECURING SHELL

DETAIL -A-



DETAIL -C-



DETAIL -B-
FLOATING MOUNTING BUSHING

INCHES	MM	INCHES	MM	INCHES	MM
.004	.10	.065	1.65	.125	3.18
.005	.13	.070	1.78	.129	3.28
.008	.20	.086	2.18	.150	3.81
.010	.25	.092	2.34	.159	4.04
.030	.76	.102	2.59	.220	5.59
.031	.79	.106	2.69	.422	10.72
.040	1.02	.115	2.92		
.062	1.57	.120	3.05		

Ⓢ DENOTES CHANGE

P.A.Navy-EC	International Interest	TITLE CONNECTORS, ELECTRIC, RECTANGULAR MINIATURE, POLARIZED SHELL, RACK AND PANEL, SHELL, PLUG PIN CONTACTS, SOLDER TYPE	MILITARY STANDARD
Other Cust AF-85 Army-CR			MS18268
Procurement Specification MIL-C-24308		SUPERSEDES:	Page 1 OF 2

DD FORM 10 APR 64 672 (Coordinated) PREVIOUS EDITIONS OF THIS FORM ARE OBSOLETE.

5935-3042-2

APPROVED 30 NOV 1967 REVISED ⓐ 21 MAR 1969 ⓑ 20 OCT 1969 ⓒ 13 JUNE 1973 ⓓ 13 NOV 78

FED. SUP CLASS
5935User activities: Army - AT
Navy - MC, CG, SH
Air ForceReviewer activities: Army - MI
Navy - AS
Air Force - II, 99
DLA - ES

MS NUMBER	SHELL SIZE	DIMENSIONS											
		A	B	C	D	E	F	G	H	J	K	L	
MS18268-1	1	1.228 (31.19)	.671 (17.04)	.989 (25.12)	.334 (8.48)	.509 (12.93)	.432 (10.97)	.238 (6.05)	.769 (19.53)	.432 (10.97)	.060 (1.53)	.040 (1.02)	
		1.198 (30.43)	.661 (16.79)	.979 (24.87)	.324 (8.23)	.479 (12.17)	.412 (10.46)	.229 (5.82)	.749 (19.02)	.412 (10.46)	.035 (.89)	.020 (.51)	
		1.556 (39.52)	.999 (25.37)	1.317 (33.45)	.334 (8.48)	.509 (12.93)	.432 (10.97)	.238 (6.05)	1.093 (27.76)	.432 (10.97)	.060 (1.53)	.040 (1.02)	
MS18268-2	2	1.526 (38.76)	.989 (25.12)	1.307 (33.20)	.324 (8.23)	.479 (12.17)	.412 (10.46)	.229 (5.82)	1.073 (27.25)	.412 (10.46)	.035 (.89)	.020 (.51)	
		2.103 (53.42)	1.539 (39.09)	1.857 (47.17)	.334 (8.48)	.509 (12.93)	.436 (11.07)	.236 (5.99)	1.635 (41.53)	.432 (10.97)	.070 (1.78)	.049 (1.24)	
		2.073 (52.65)	1.529 (38.84)	1.847 (46.91)	.324 (8.23)	.479 (12.17)	.416 (10.57)	.224 (5.69)	1.615 (41.02)	.412 (10.46)	.050 (1.27)	.029 (.74)	
MS18268-3	3	2.744 (69.70)	2.187 (55.55)	2.505 (63.63)	.334 (8.48)	.509 (12.93)	.436 (11.07)	.236 (5.99)	2.282 (57.96)	.432 (10.97)	.070 (1.78)	.049 (1.24)	
		2.714 (68.94)	2.177 (55.30)	2.495 (63.37)	.324 (8.23)	.479 (12.17)	.416 (10.57)	.224 (5.69)	2.262 (57.45)	.412 (10.46)	.050 (1.27)	.029 (.74)	
		2.650 (67.31)	2.084 (52.93)	2.411 (61.24)	.441 (11.20)	.620 (15.75)	.436 (11.07)	.236 (5.99)	2.188 (55.58)	.544 (13.82)	.070 (1.78)	.049 (1.24)	
MS18268-4	4	2.620 (66.55)	2.074 (52.68)	2.401 (60.99)	.431 (10.95)	.590 (14.99)	.416 (10.57)	.224 (5.69)	2.168 (55.07)	.524 (13.31)	.050 (1.27)	.029 (.74)	
		2.744 (69.70)	2.217 (56.31)	2.505 (63.63)	.508 (12.90)	.683 (17.35)	.436 (11.07)	.236 (5.99)	2.312 (58.72)	.606 (15.39)	.070 (1.78)	.049 (1.24)	
		2.714 (68.94)	2.207 (56.06)	2.495 (63.37)	.498 (12.65)	.653 (16.59)	.416 (10.57)	.224 (5.69)	2.292 (58.22)	.586 (14.88)	.050 (1.27)	.029 (.74)	
MS18268-5	5	2.650 (67.31)	2.084 (52.93)	2.411 (61.24)	.441 (11.20)	.620 (15.75)	.436 (11.07)	.236 (5.99)	2.188 (55.58)	.544 (13.82)	.070 (1.78)	.049 (1.24)	
		2.620 (66.55)	2.074 (52.68)	2.401 (60.99)	.431 (10.95)	.590 (14.99)	.416 (10.57)	.224 (5.69)	2.168 (55.07)	.524 (13.31)	.050 (1.27)	.029 (.74)	
		2.744 (69.70)	2.217 (56.31)	2.505 (63.63)	.508 (12.90)	.683 (17.35)	.436 (11.07)	.236 (5.99)	2.312 (58.72)	.606 (15.39)	.070 (1.78)	.049 (1.24)	
MS18268-6	6	2.714 (68.94)	2.207 (56.06)	2.495 (63.37)	.498 (12.65)	.653 (16.59)	.416 (10.57)	.224 (5.69)	2.292 (58.22)	.586 (14.88)	.050 (1.27)	.029 (.74)	
		-7	1	Same as MS18268-1 except per detail B									
		-8	2	MS18268-2									
-9	3	MS18268-3											
-10	4	MS18268-4											
-11	5	MS18268-5											
-12	6	MS18268-6											

SEE NOTE 7

NOTES:

- Dimensions are in inches.
- Metric equivalents are in parentheses.
- Metric equivalents are given for general information only and are based upon 1.00 inch = 25.4 mm.
- Pin diameter .041/.039 (1.04/.99 mm) for arrangements MS 18273-1, MS 18274-1, MS 18275-1, MS 18276-1 and MS 18277-1. Pin diameter .0305/.0295 (.775/.749 mm) for arrangements MS 18273-2, MS 18274-2, MS 18275-2, MS 18276-2, MS 18277-2 and MS 14004-1.
- Patent notice. The Government has a royalty free license under the U. S. Patents listed below for the benefit of manufacturers of the items disclosed and described herein, either for the Government or for use in equipment delivered to the Government.

Patent Numbers

2790153 expires April 23, 1974
 3110093 expires November 12, 1980
 3158424 expires November 24, 1981

- Copyright notice. All information disclosed in this military standard which is or may be copyrighted by ITT Cannon Electric is reproduced herein with the express permission of the copyright owner.
- "D" dimension for shell size 5 will change from .441 - .431 (11.20 - 10.95 mm) to .446 - .436 (11.33 - 11.07 mm) effective 1 July 1980.
- Dimensions are .150 minimum full pin diameter extension (sizes 3 thru 6) and .159 minimum full pin diameter extension (sizes 1 & 2).

THIS IS A DESIGN STANDARD. NOT TO BE USED AS A PART NUMBER.

P.A. Navy - EC	International interest	TITLE CONNECTORS, ELECTRIC, RECTANGULAR, MINIATURE, POLARIZED SHELL, RACK AND PANEL, SHELL, PLUG	MILITARY STANDARD
Other Cust AF-85		PIN CONTACTS, SOLDER TYPE	MS18268
Army - CR			
Procurement Specification MIL-C-24308		SUPERSEDES:	Page 2 OF 2

DD FORM 10 APR 64 672 (Coordinated) PREVIOUS EDITIONS OF THIS FORM ARE OBSOLETE.