

INCH-POUND

MS18192G
 5 January 2011
 SUPERSEDING
 MS18192F
 1 June 1983

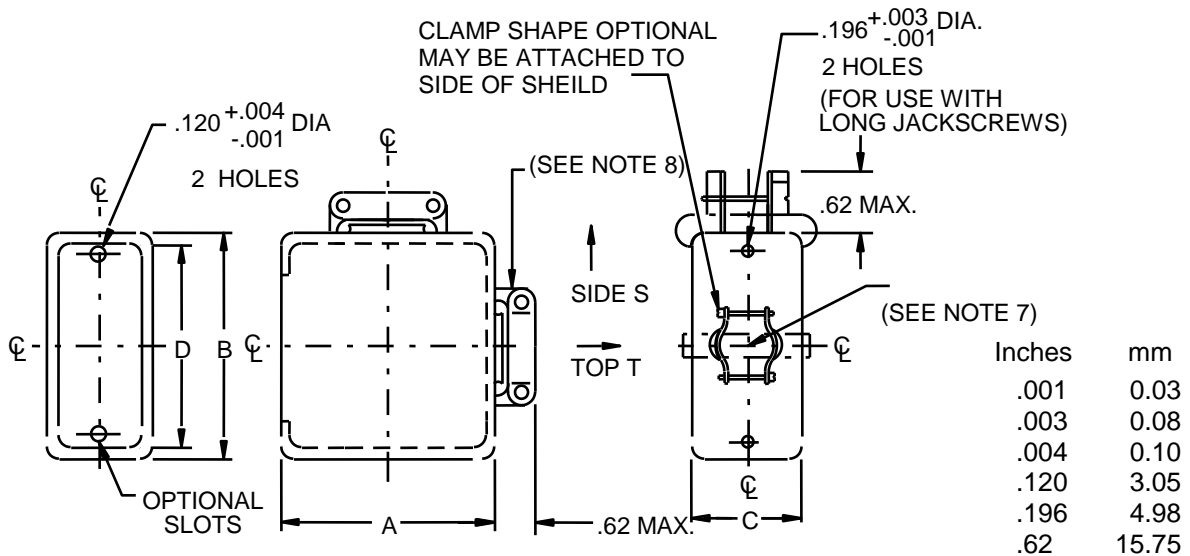
DETAIL SPECIFICATION SHEET

SHIELD, ELECTRICAL CONNECTORS FOR
 7, 9, 14, 20, 26, 34, 42, 50 AND 75
 CONTACT CONNECTORS

Reinstated after 10 July 2009 and may be used for new and existing designs and acquisitions.

This specification is approved for use by all Departments and Agencies of the Department of Defense.

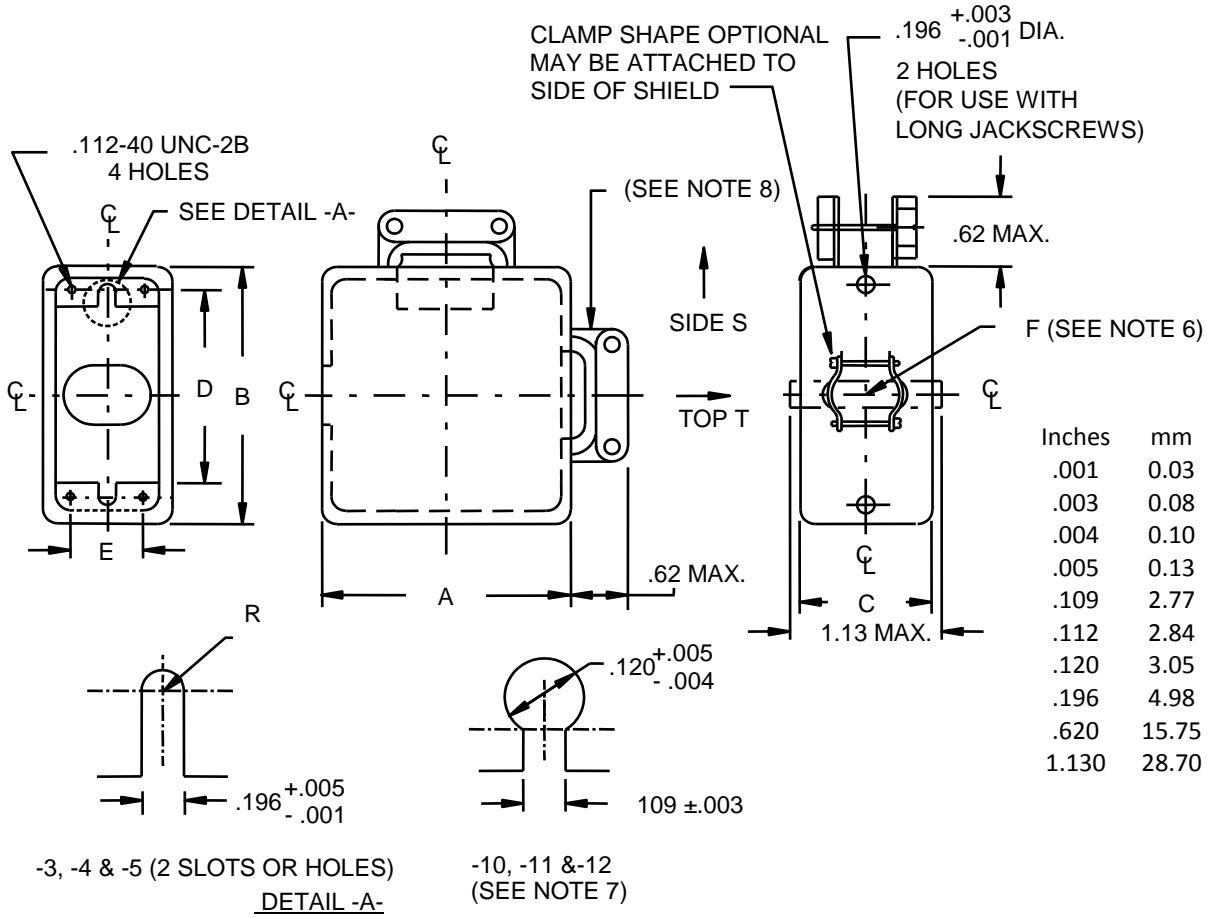
The requirements for acquiring the product described herein shall consist of this specification sheet and MIL-DTL-28748.



Shield designator	Shield and shield clamp location	Connector size (number of contacts)	A min max	B ± .016 (0.41 mm)	C ± .016 (0.41 mm)	D ±.005 (0.13 mm)	F Minimum cable opening square inch
MS18192-T7 MS18192-S7	top opening side opening	7	1.18 (29.97) 1.35 (34.29)	1.220 (30.99)	.437 (11.10)	.906 (23.01)	.18 (4.57)
MS18192-T8 MS18192-S8	top opening side opening	9	1.18 (29.97) 1.35 (34.29)	1.312 (33.32)	.437 (11.10)	1.000 (25.40)	.10 (2.54)
MS18192-T14 MS18192-S14	top opening side opening	14	1.18 (29.97) 1.35 (34.29)	1.250 (31.75)	.500 (12.70)	.938 (23.83)	.19 (4.83)
MS18192-T18 MS18192-S18	top opening side opening	18	1.18 (29.97) 1.35 (34.29)	1.190 (30.23)	.630 (16.00)	1.000 (25.40)	.22 (5.59)
MS18192-T20 MS18192-S20	top opening side opening	20	1.18 (29.97) 1.35 (34.29)	1.562 (39.67)	.500 (12.70)	1.250 (31.75)	.22 (5.59)
MS18192-T26 MS18192-S26	top opening side opening	26	1.18 (29.97) 1.35 (34.29)	1.625 (41.28)	.640 (16.26)	1.312 (33.32)	.22 (5.59)

FIGURE 1. Shields for 7, 9, 14, 18, 20, 26, 34, 42, 50, and 75 contact positions.

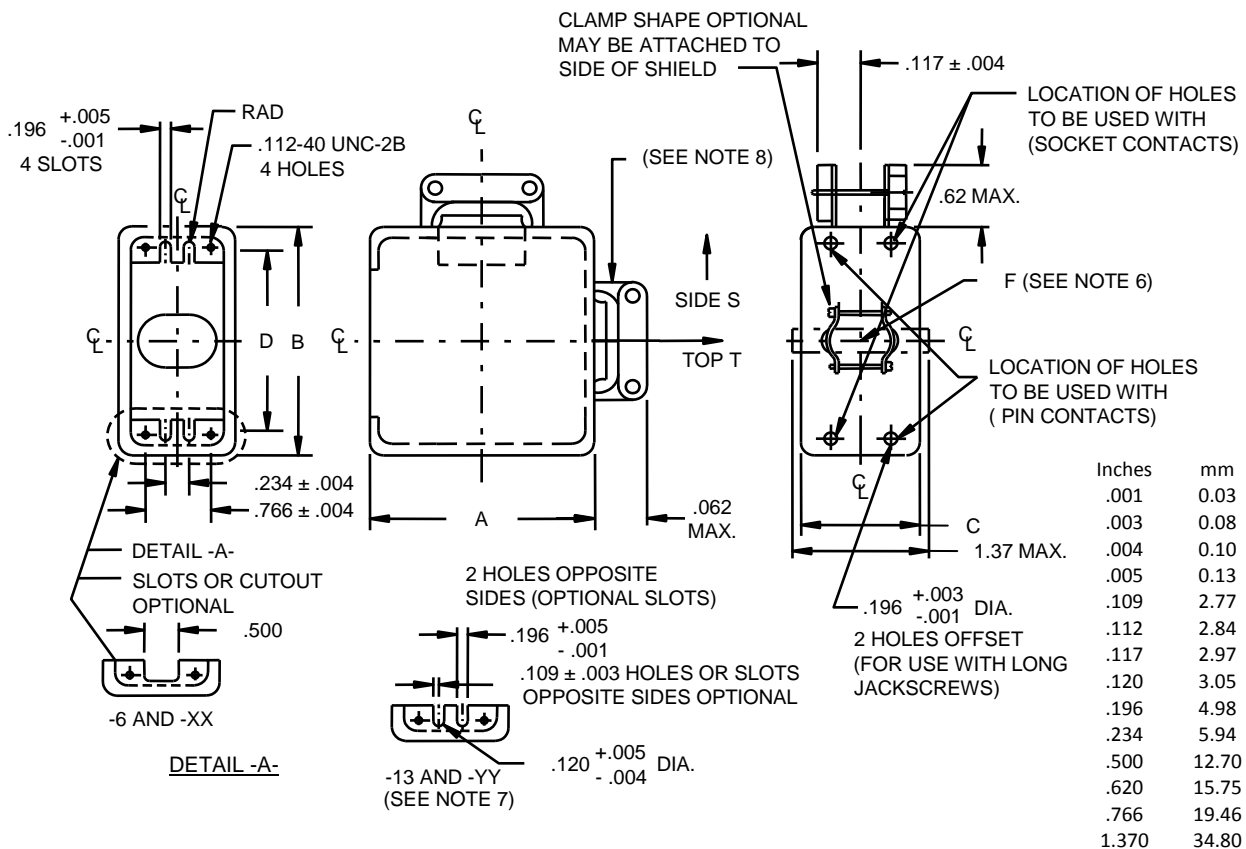
MS18192G



Shield designator	Shield and shield clamp location suffix designator	Connector size (number of contacts)	A min max	B ± .016 (0.41 mm)	C ± .016 (0.41 mm)	D ±.005 (0.13 mm)	E ±.010 (0.25)	F Minimum cable opening square inch
MS18192-T3 MS18192-S3	top opening side opening	34	1.22 (30.99) 1.35 (34.29)	2.000 (50.80)	.828 (21.03)	1.688 (42.88)	.468 (11.89)	.34 (8.64)
MS18192-T4 MS18192-S4	top opening side opening	42	1.22 (30.99) 1.35 (34.29)	2.312 (58.72)	.828 (21.03)	2.000 (50.80)	.468 (11.89)	.34 (8.64)
MS18192-T5 MS18192-S5	top opening side opening	50	1.22 (30.99) 1.35 (34.29)	2.594 (65.89)	.828 (21.03)	2.282 (57.96)	.468 (11.89)	.34 (8.64)
MS18192-T10 MS18192-S10	top opening side opening	34	1.22 (30.99) 1.35 (34.29)	2.000 (50.80)	.828 (21.03)	1.688 (42.88)	.468 (11.89)	.34 (8.64)
MS18192-T11 MS18192-S11	top opening side opening	42	1.22 (30.99) 1.35 (34.29)	2.312 (58.72)	.828 (21.03)	2.000 (50.80)	.468 (11.89)	.34 (8.64)
MS18192-T12 MS18192-S12	top opening side opening	50	1.22 (30.99) 1.55 (39.37)	2.594 (65.89)	.828 (21.03)	2.282 (57.96)	.468 (11.89)	.34 (8.64)

FIGURE 1. Shields for 7, 9, 14, 18, 20, 26, 34, 42, 50, and 75 contact positions - Continued.

MS18192G



Designator	Shield and shield clamp location suffix designator	Connector size (number of contacts)	A min max	B ± .016 (0.41 mm)	C ± .016 (0.41 mm)	D ± .005 (0.13 mm)	F Minimum cable opening square inch
MS18192-T6	top opening	75	1.22 (30.99)	2.594	1.188	2.282	.55
MS18192-S6	side opening	Pin only	1.35 (34.29)	(65.89)	(30.18)	(57.96)	(13.97)
MS18192-T13	top opening	75	1.22 (30.99)	2.594	1.188	2.282	.55
MS18192-S13	side opening	Pin only	1.35 (34.29)	(65.89)	(30.18)	(57.96)	(13.97)
MS18192-TXX	top opening	75	1.22 (30.99)	2.594	1.188	2.282	.55
MS18192-SXX	side opening	Socket only	1.35 (34.29)	(65.89)	(30.18)	(57.96)	(13.97)
MS18192-TYY	top opening	75	1.22 (30.99)	2.594	1.188	2.282	.55
MS18192-SYY	side opening	Socket only	1.35 (34.29)	(65.89)	(30.18)	(57.96)	(13.97)

NOTES:

- Dimensions are in inches.
- Metric equivalents are given for information only.
- Unless otherwise specified, tolerances are ±.016 inch (0.41 mm).
- Material aluminum alloy in accordance with SAE-AMS4016 temper H32 .040 inch (1.02 mm) thick.
- Finish anodized in accordance with MIL-A-8625, type I or type II.
- Edges of cable entry hole to be rounded to prevent insulation chafing.
- MS18192-T10, S10, T11, S12, T13, S13, TYY, and SYY are for use with one-piece jackscrews.
- Clamp hinge may attach to side of shield.

FIGURE 1. Shields for 7, 9, 14, 18, 20, 26, 34, 42, 50, and 75 contact positions - Continued.

MS18192G

Shields contact positions. See figure 1.

Changes from previous issue. Marginal notations are not used in this revision to identify changes with respect to the previous issue due to the extent of the changes.

Referenced documents. In addition to MIL-DTL-28748, this document references the following:

MIL-A-8625
SAE-AMS4016

CONCLUDING MATERIAL

Custodians:

Army – CR
Navy – EC
Air Force – 85
DLA - CC

Preparing activity:
DLA - CC

Review activities:

Army – AM, AR, AT, CR4, MI
Navy – AS, MC, OS, SH
Air Force – 99

(Project 5935-2009-159)

NOTE: The activities listed above were interested in this document as of the date of this document. Since organizations and responsibilities can change, you should verify the currency of the information above using the ASSIST Online database at <https://assist.daps.dla.mil>.