

This military standard is approved for use by all Departments and Agencies of the Department of Defense. Selection for all new engineering and design applications and for repetitive use shall be made from this document.

Reviewer activities: Army MI, MU, AT
Navy AS, SH, OS
Air Force JJ, 80
DSA - ES

User activities: Army ME, AV, WL
Navy MC
Air Force

Design standard for use with MIL-C-28748/9

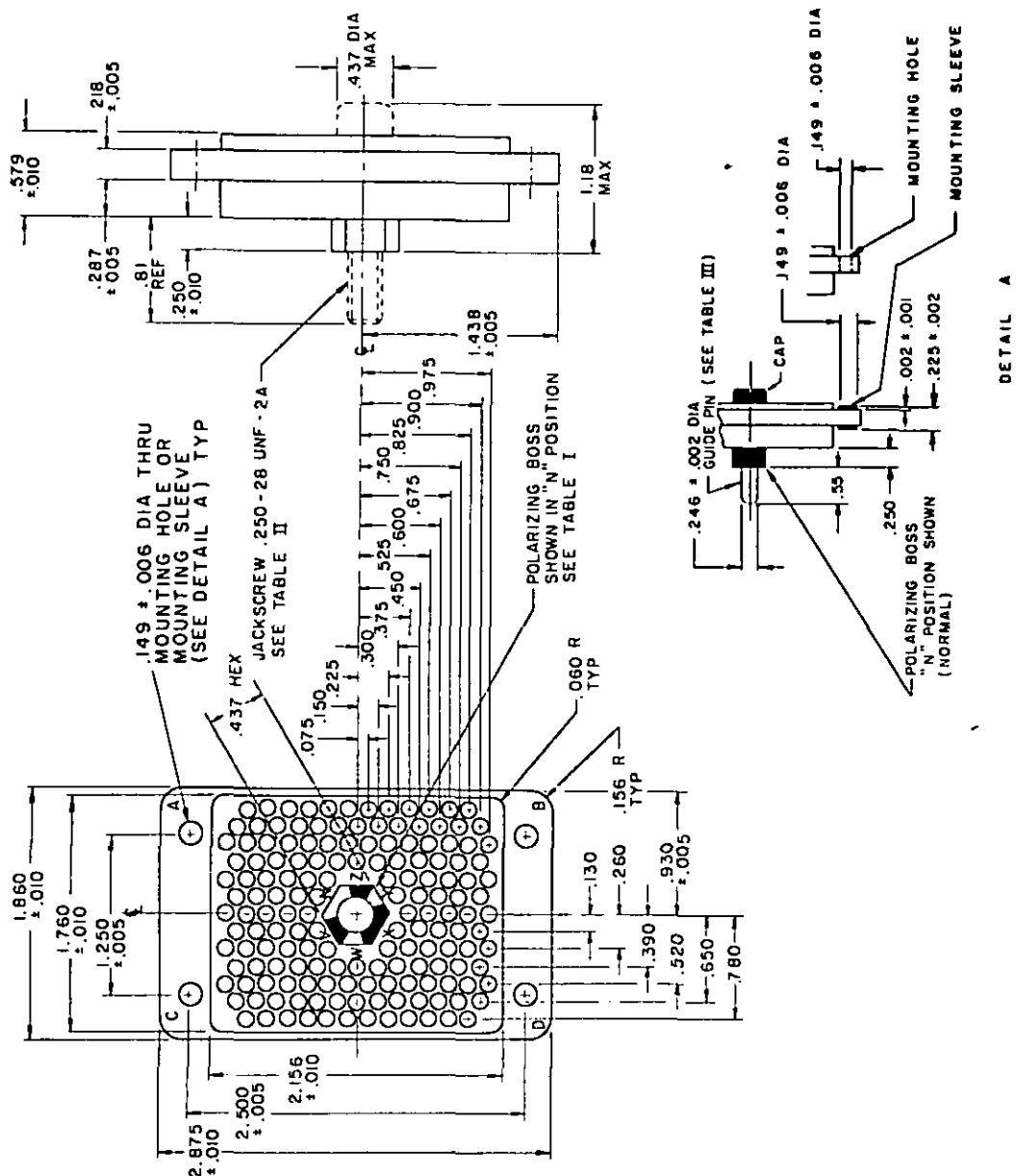
(B) Entire standard revised

P.A Navy - EC	International Interfax:	TITLE INSERT (INSULATOR), RECTANGULAR CONNECTOR, POLARIZED CENTER SCREW- LOCK, ELECTRICAL, 158 (SIZE 16 CRIMP REMOVABLE) PIN CONTACTS	MILITARY STANDARD
Other Cust: AF - 85 Army - EL			MS 18165
Procurement Specification MIL-C-28748		SUPERSEDES:	SHEET 1 OF 3

DD FORM 1 SEP 63 672 (Coordinated) PREVIOUS EDITIONS OF THIS FORM ARE OBSOLETE

5935-2004-15

FED. SUP CLASS
5935



APPROVED 20 Dec 1965 REVISED (A) 20 May 1970 (B) 8 July 1976

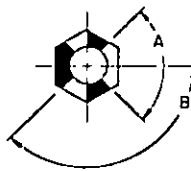
FED. SUP CLASS
5935TYPE
SEE TABLE I

TABLE I		
TYPE	A	B
1	90°	135°
2	85°	137° 30'

TABLE II

MS PART NUMBER	POLARIZATION *	JACKSCREW
MS 18165-1N	N (TYPE 1)	SUPPLIED WITH CONNECTOR
MS 18165-1V	V (TYPE 1)	
MS 18165-1W	W (TYPE 1)	
MS 18165-1X	X (TYPE 2)	
MS 18165-1Y	Y (TYPE 2)	
MS 18165-1Z	Z (TYPE 2)	
MS 18165-2N	N (TYPE 1)	NOT SUPPLIED WITH CONNECTOR POLARIZING BOSS THREADED INTERNALLY .250-28 UNF-2B
MS 18165-2V	V (TYPE 1)	
MS 18165-2W	W (TYPE 1)	
MS 18165-2X	X (TYPE 2)	
MS 18165-2Y	Y (TYPE 2)	
MS 18165-2Z	Z (TYPE 2)	

TABLE III

MS PART NUMBER	POLARIZATION *	GUIDE PIN
MS 18165-3N	N (TYPE 1)	SUPPLIED WITH CONNECTOR
MS 18165-3V	V (TYPE 1)	
MS 18165-3W	W (TYPE 1)	
MS 18165-3X	X (TYPE 2)	
MS 18165-3Y	Y (TYPE 2)	
MS 18165-3Z	Z (TYPE 2)	
MS 18165-4N	N (TYPE 1)	NOT SUPPLIED WITH CONNECTOR POLARIZING BOSS WITH .254 ± .002 I.D. TO ACCEPT GUIDE PIN
MS 18165-4V	V (TYPE 1)	
MS 18165-4W	W (TYPE 1)	
MS 18165-4X	X (TYPE 2)	
MS 18165-4Y	Y (TYPE 2)	
MS 18165-4Z	Z (TYPE 2)	

* LARGE OPENING IN POLARIZATION BOSS MUST BE ADJACENT TO
POLARIZATION LETTER ON CONNECTOR BODY.

APPROVED 20 Dec 1965 REVISED (B) For changes see sheets 1, 2 and 3

P.A. Navy - EC	International Interests:	TITLE INSERT (INSULATOR), RECTANGULAR CONNECTOR, POLARIZED CENTER SCREW- LOCK, ELECTRICAL, 158 (SIZE 16 CRIMP REMOVABLE) PIN CONTACTS	MILITARY STANDARD
Other Code: AF - 85 Army - EL			MS 18165
Procurement Specification MIL-C-28748		SUPERSEDES:	SHEET 2 OF 3

User activities: Army, ME, AV, WC
Navy, MC
Air Force

Reviewer activities: Army, MI, MU, AT
Navy, AS, SH, OS
Air Force, 1, 80
DSA - ES

This military standard is approved for use by all Departments and Agencies of the Department of Defense. Selection for all new engineering and design applications and for repetitive use is not recommended from this document.

FED. SUP CLASS
5935User activities: Army, ME, AV, WC
Navy, AS, SH, OS
Air ForceReviewer activities: Army, MI, MU, AT
Navy, AS, SH, OS
Air Force, 11, 80
DSA - ES

This military standard is approved for use by all Departments and Agencies of the Department of Defense. Selection for all new engineering and design applications and for repetitive use shall be made from this document.

INCHES	MM	INCHES	MM
.001	.03	.520	13.21
.002	.05	.525	13.34
.005	.13	.550	13.97
.006	.15	.579	14.71
.010	.25	.600	15.24
.060	1.52	.650	16.51
.075	1.91	.675	17.15
.130	3.30	.750	19.05
.149	3.78	.780	19.81
.150	3.81	.810	20.57
.156	3.96	.825	20.96
.218	5.54	.900	22.86
.225	5.72	.930	23.62
.246	6.25	.975	24.77
.250	6.35	1.180	29.97
.260	6.60	1.250	31.75
.287	7.29	1.438	36.53
.300	7.62	1.760	44.70
.375	9.53	1.860	47.24
.390	9.91	2.156	54.76
.437	11.10	2.500	63.50
.450	11.43	2.875	73.03

NOTES:

1. Dimensions are in inches.
2. Unless otherwise specified, tolerance is $\pm .015$ (.38 mm).
3. Metric equivalents (to the nearest .01 mm) are given for general information only and are based upon 1 inch = 25.4 mm.
4. Tolerance between any two adjacent contact centers shall be $\pm .004$ (.10 mm). Tolerance between any two contact centers, other than adjacent contacts, shall be $\pm .006$ (.15 mm).
5. Contact hole details shall be in accordance with MIL-C-28748.
6. For mating connector see MS18166 (socket body).
7. Dimensions symmetrical about centerlines.
8. For design feature purposes, this standard takes precedence over procurement documents referenced herein.
9. Reference documents shall be of the issue in effect on date of invitation for bid.
10. Insert material shall be in accordance with MIL-C-28748.
11. Flatness, squareness and parallelism shall be within dimensional tolerances.
12. Center polarizing hardware may be rotated by removing retaining ring and spacer or removing cap (left hand thread) at rear of insert.
13. Maximum insertion and withdrawal force (connector assembly) shall be 148 pounds.
14. Maximum torque required at jackscrew to properly engage or disengage connector shall be 10 inch pounds.
15. Jackscrew wrench size 5/32 hex.

APPROVED 20 Dec 1965
REVISED (B) For changes see sheets 1, 2 and 3

P.A Navy - EC	International interest:	TITLE INSERT (INSULATOR), RECTANGULAR CONNECTOR, POLARIZED CENTER SCREW-LOCK, ELECTRICAL, 158 (SIZE 16 CRIMP REMOVABLE) PIN CONTACTS	MILITARY STANDARD
Other Cust AF - 85 Army - EL			MS 18165
Procurement Specification MIL-C-28748	SUPERSEDES:		SHEET 3 OF 3