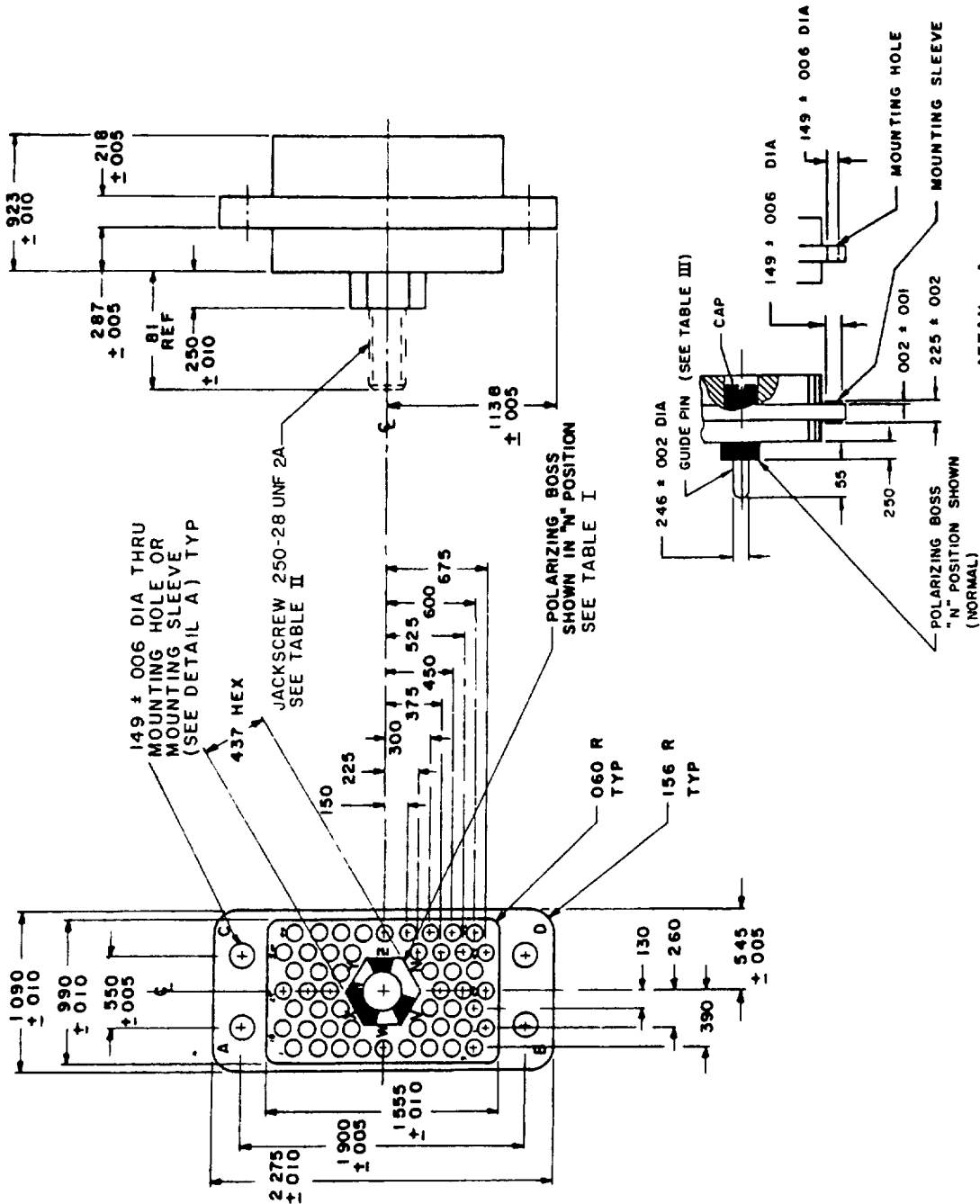


FED SUP CLASS
5935User activities Army ME, AV, WC
Navy MC
Air ForceReviewer activities Army MI, MU, AT
Navy AS, SH, OS
Air Force 11, 80
DSA - ES

This military standard is approved for use by all Departments and Agencies of the Department of Defense. Selection for all new engineering and design applications and for repetitive use will be made from this document.



DETAIL A

Design standard for use with MIL-C-28748 /10

(B) Entire standard revised

Navy - EC	International 100000	TITLE INSERT (INSULATOR), RECTANGULAR CONNECTOR, POLARIZED CENTER SCREW- LOCK, ELECTRICAL, 52 (SIZE 16 CRIMP REMOVABLE) SOCKET CONTACTS	MILITARY STANDARD
AF - 85 Army - EL		SUPERSEDES	MS 18162
MIL-C-28748			SHEET 1 OF 3

DD FORM 672

(Coordinated) PREVIOUS EDITIONS OF THIS FORM ARE OBSOLETE

5935-2004-12

APPROVED 20 Dec 1965 REVISED (A) 20 May 1970 (B) 8 July 1976

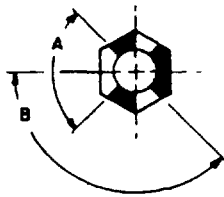
FED SUP CLASS
5935TYPE
SEE TABLE I

TABLE I

TYPE	A	B
1	90°	135°
2	85°	137° 30'

TABLE II

MS PART NUMBER	POLARIZATION *	JACKSCREW
MS 18162-1N	N (TYPE 1)	SUPPLIED WITH CONNECTOR
MS 18162-1V	V (TYPE 1)	
MS 18162-1W	W (TYPE 1)	
MS 18162-1X	X (TYPE 2)	
MS 18162-1Y	Y (TYPE 2)	
MS 18162-1Z	Z (TYPE 2)	
MS 18162-2N	N (TYPE 1)	NOT SUPPLIED WITH CONNECTOR POLARIZING BOSS THREADED INTERNALLY 250-28 UNF-2B
MS 18162-2V	V (TYPE 1)	
MS 18162-2W	W (TYPE 1)	
MS 18162-2X	X (TYPE 2)	
MS 18162-2Y	Y (TYPE 2)	
MS 18162-2Z	Z (TYPE 2)	

TABLE III

MS PART NUMBER	POLARIZATION *	GUIDE PIN
MS 18162-3N	N (TYPE 1)	SUPPLIED WITH CONNECTOR
MS 18162-3V	V (TYPE 1)	
MS 18162-3W	W (TYPE 1)	
MS 18162-3X	X (TYPE 2)	
MS 18162-3Y	Y (TYPE 2)	
MS 18162-3Z	Z (TYPE 2)	
MS 18162-4N	N (TYPE 1)	NOT SUPPLIED WITH CONNECTOR POLARIZING BOSS WITH 254 ± 002 I D TO ACCEPT GUIDE PIN
MS 18162-4V	V (TYPE 1)	
MS 18162-4W	W (TYPE 1)	
MS 18162-4X	X (TYPE 2)	
MS 18162-4Y	Y (TYPE 2)	
MS 18162-4Z	Z (TYPE 2)	

* LARGE OPENING IN POLARIZATION BOSS MUST BE ADJACENT TO
POLARIZATION LETTER ON CONNECTOR BODY

P A Navy - EC

International
InteriorsTITLE INSERT (INSULATOR), RECTANGULAR
CONNECTOR, POLARIZED CENTER SCREW-
LOCK, ELECTRICAL, 52 (SIZE 16 CRIMP
REMOVABLE) SOCKET CONTACTS

MILITARY STANDARD

Other Cusi
AF - 85
Army - EL

MS 18162

Procurement Specification
MIL-C-28748

SUPERSEDES

SHEET 2 OF 3

DD FORM 1 SEP 83 672 (Coordinated) PREVIOUS EDITIONS OF THIS FORM ARE OBSOLETE

5935-2004-12

User activities
Army ME, AV, WC
Navy MC
Air ForceReviewer activities
Army ML, MU, AT
Navy AS, SH, OS
Air Force 11, 80
DSA - ES

This military standard is approved for use by all Departments and Agencies of the Department of Defense. Selection for all new engineering and design applications and for repetitive use shall be made from this document.

APPROVED 20 Dec 1965 REVISED (B) For changes see sheets 1, 2 and 3

FED SUP CLASS
5935User activities
Army ME, AV, WC
Navy MC
Air ForceReviewer activities
Army MI, MU, AT
Navy AS, SH, OS
Air Force 11, 80
DSA - ES

Military standard is approved for use by all Departments and Agencies of the Department of Defense. Selection for all new engineering and design applications and for repetitive use in existing documents.

INCHES	MM	INCHES	MM
.001	.03	.375	9.53
.002	.05	.390	9.91
.005	.13	.437	11.10
.006	.15	.450	11.43
.010	.25	.525	13.34
.060	1.52	.545	13.84
.130	3.30	.550	13.97
.149	3.78	.600	15.24
.150	3.81	.675	17.15
.156	3.96	.810	20.57
.218	5.54	.923	23.44
.225	5.72	.990	25.15
.246	6.25	1.090	27.69
.250	6.35	1.138	28.91
.260	6.60	1.555	39.50
.287	7.29	1.900	48.26
.300	7.62	2.275	57.79

NOTES

1. Dimensions are in inches.
2. Unless otherwise specified, tolerance is $\pm .015$ (.38 mm).
3. Metric equivalents (to the nearest .01 mm) are given for general information only and are based upon 1 inch = 25.4 mm.
4. Tolerance between any two adjacent contact centers shall be $\pm .004$ (.10 mm). Tolerance between any two contact centers, other than adjacent contacts, shall be $\pm .006$ (.15 mm).
5. Contact hole details shall be in accordance with MIL-C-28748.
6. For mating connector see MS18161 (pin body).
7. Dimensions symmetrical about centerlines.
8. For design feature purposes, this standard takes precedence over procurement documents referenced herein.
9. Reference documents shall be of the issue in effect on date of invitation for bid.
10. Insert material shall be in accordance with MIL-C-28748.
11. Flatness, squareness and parallelism shall be within dimensional tolerances.
12. Center polarizing hardware may be rotated by removing retaining ring and spacer or removing cap (left hand thread) at rear of insert.
13. Maximum insertion and withdrawal force (connector assembly) shall be 48 pounds.
14. Maximum torque required at jackscrew to properly engage or disengage connector shall be 4 inch pounds.
15. Jackscrew wrench size 5/32 hex.

APPROVED 20 Dec 1965 REVISED (B) For changes see sheets 1, 2 and 3

P - Navy - EC	International inserts	TITLE INSERT (INSULATOR), RECTANGULAR CONNECTOR, POLARIZED CENTER SCREW- LOCK, ELECTRICAL, 52 (SIZE 16 CRIMP REMOVABLE) SOCKET CONTACTS	MILITARY STANDARD
AF - 85 Army - EL			MS 18162
MIL-C-28748	SUPERSEDES		SHEET 3 OF 3