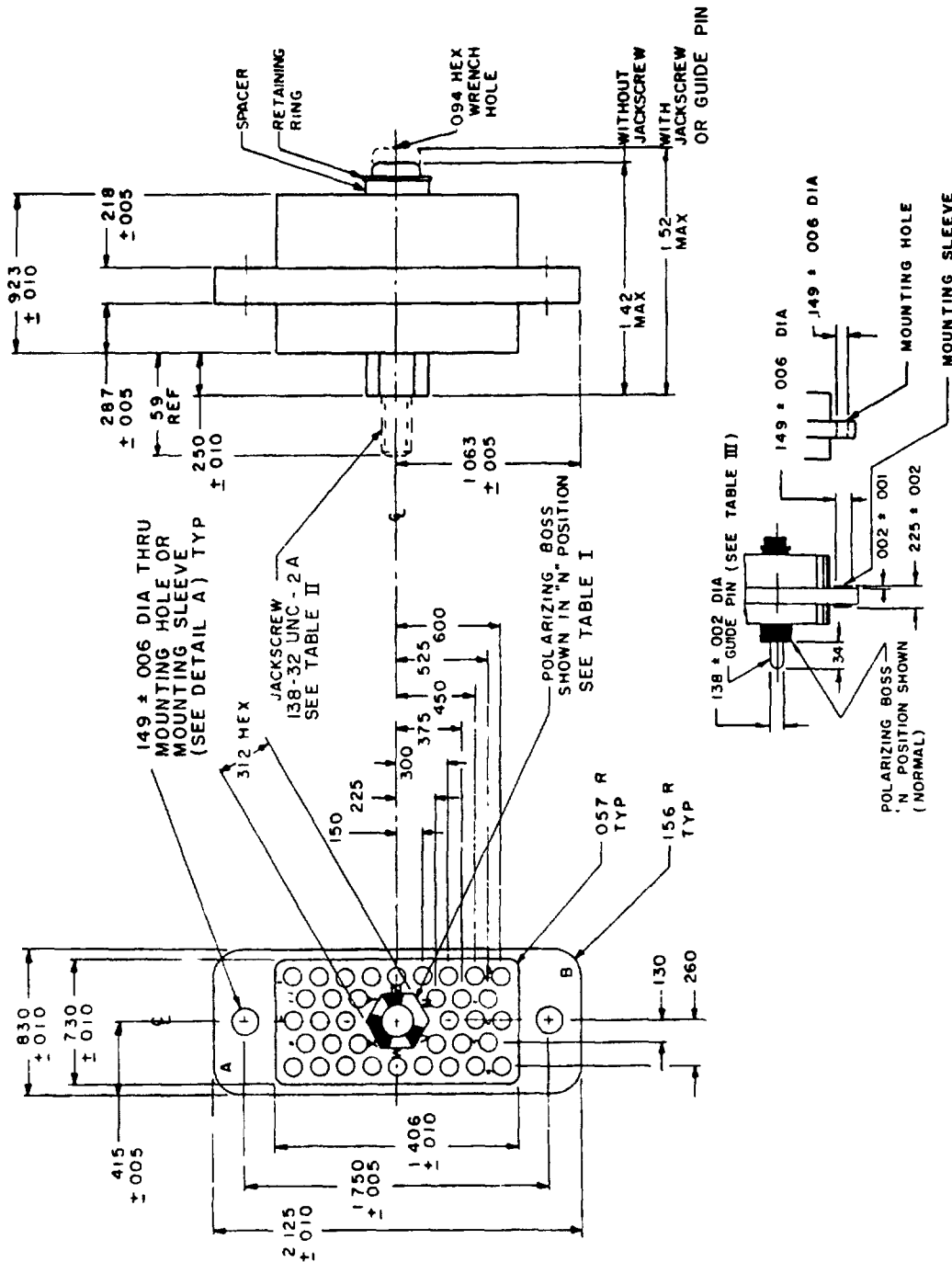


FED SUP CLASS  
5935

This military standard is approved for use by all Departments and Agencies of the Department of Defense. Selection for all new engineering and design applications and for repetitive use shall be based on the following criteria:

Reviewer activities: Army MI, MU, AT, AS, SH, OS  
Navy AS, SH, OS  
Air Force 11, 80  
DSA - ES

User activities: Army ME, AV, WC  
Navy MC  
Air Force



Design standard for use with MIL-C-28748/10

© Entire standard revised

P A Navy - EC	International versions	TITLE INSERT (INSULATOR), RECTANGULAR CONNECTOR, POLARIZED CENTER SCREW- LOCK, ELECTRICAL, 36 (SIZE 16 CRIMP REMOVABLE) SOCKET CONTACTS	MILITARY STANDARD
Other Cus AF - 85 Army - EL			MS 18160
Principal Specification MIL-C-28748		SUPERSEDES	SHEET 1 OF 3

DD FORM 672  
1 SEP 63

(Coordinated) PREVIOUS EDITIONS OF THIS FORM ARE OBSOLETE

5935-2004-10

APPROVED 20 Dec 1965 REVISED (A) 29 Jul 1968 (B) 20 May 1970 (C) 8 July 1976

DETAIL A

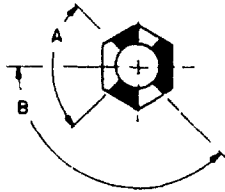
FED SUP CLASS  
5935TYPE  
SEE TABLE I

TABLE I		
TYPE	A	B
1	90°	135°
2	85°	137° 30'

TABLE II

MS PART NUMBER	POLARIZATION *	JACKSCREW
MS 18160-1N	N (TYPE 1)	SUPPLIED WITH CONNECTOR
MS 18160-1V	V (TYPE 1)	
MS 18160-1W	W (TYPE 1)	
MS 18160-1X	X (TYPE 2)	
MS 18160-1Y	Y (TYPE 2)	
MS 18160-1Z	Z (TYPE 2)	
MS 18160-2N	N (TYPE 1)	NOT SUPPLIED WITH CONNECTOR POLARIZING BOSS THREADED INTERNALLY 138-32 UNC - 28
MS 18160-2V	V (TYPE 1)	
MS 18160-2W	W (TYPE 1)	
MS 18160-2X	X (TYPE 2)	
MS 18160-2Y	Y (TYPE 2)	
MS 18160-2Z	Z (TYPE 2)	

TABLE III

MS PART NUMBER	POLARIZATION *	GUIDE PIN
MS 18160-3N	N (TYPE 1)	SUPPLIED WITH CONNECTOR
MS 18160-3V	V (TYPE 1)	
MS 18160-3W	W (TYPE 1)	
MS 18160-3X	X (TYPE 2)	
MS 18160-3Y	Y (TYPE 2)	
MS 18160-3Z	Z (TYPE 2)	
MS 18160-4N	N (TYPE 1)	NOT SUPPLIED WITH CONNECTOR POLARIZING BOSS WITH 144 ± 002 ID TO ACCEPT GUIDE PIN
MS 18160-4V	V (TYPE 1)	
MS 18160-4W	W (TYPE 1)	
MS 18160-4X	X (TYPE 2)	
MS 18160-4Y	Y (TYPE 2)	
MS 18160-4Z	Z (TYPE 2)	

\* LARGE OPENING IN POLARIZATION BOSS MUST BE ADJACENT TO  
POLARIZATION LETTER ON CONNECTOR BODY

P A Navy - EC

International  
Interest

TITLE INSERT (INSULATOR), RECTANGULAR  
CONNECTOR, POLARIZED CENTER SCREW-  
LOCK, ELECTRICAL, 36 (SIZE 16 CRIMP  
REMOVABLE) SOCKET CONTACTS

MILITARY STANDARD

Other Cus:  
AF - 85  
Army - EL

MS 18160

Procurement Specification  
MIL-C-28748

SUPERSEDES

SHEET 2 OF 3

DD FORM 672  
1 SEP 63

(Coordinated) PREVIOUS EDITIONS OF THIS FORM ARE OBSOLETE

5935-2004-10

Army ME, AV, WC  
Navy MC  
Air Force

User act: n/a  
Reviewer activities

Army MI, MU, AT  
Navy AS, SH, OS  
Air Force 11, 80  
DSA - ES

This military standard is approved for use by all Departments and Agencies of the Department  
of Defense. Selection for all new engineering and design applications and for repetitive use  
is required from this document

APPROVED 20 Dec 1965 REVISED (C) For changes see sheets 1, 2 and 3

FED SUP CLASS  
5935

Reviewer activities  
Army ML, MU, AT  
Navy AS, SH, OS  
Air Force 11, 80  
DSA - ES

User activities  
Army ME, AV, WC  
Navy MC  
Air Force

INCHES	MM	INCHES	MM
.001	03	312	7 92
.002	05	340	8 64
.005	13	375	9 53
.006	15	415	10 54
.010	25	450	11 43
.057	1 45	525	13 34
.094	2 39	590	14 99
.130	3.30	600	15 24
.138	3 51	730	18 54
.149	3.78	830	21 08
.150	3 81	923	23.44
.156	3 96	1 063	27.00
.218	5 54	1 406	35 71
.225	5 72	1 420	36 07
.250	6 35	1 520	38 61
.260	6 60	1 750	44 45
.287	7.29	2.125	53 98
.300	7 62		

## NOTES:

1. Dimensions are in inches.
2. Unless otherwise specified, tolerance is  $\pm .015$  (.38 mm).
3. Metric equivalents (to the nearest .01 mm) are given for general information only and are based upon 1 inch = 25.4 mm.
4. Tolerance between any two adjacent contact centers shall be  $\pm .004$  (.10 mm). Tolerance between any two contact centers, other than adjacent contacts, shall be  $\pm .006$  (.15 mm).
5. Contact hole details shall be in accordance with MIL-C-28748.
6. For mating connector see MS18159 (pin body).
7. Dimensions symmetrical about centerlines.
8. For design feature purposes, this standard takes precedence over procurement documents referenced herein.
9. Reference documents shall be of the issue in effect on date of invitation for bid.
10. Insert material shall be in accordance with MIL-C-28748.
11. Flatness, squareness and parallelism shall be within dimensional tolerances
12. Center polarizing hardware may be rotated by removing retaining ring and spacer or removing cap (left hand thread) at rear of insert
13. Maximum insertion and withdrawal force (connector assembly) shall be 34 pounds.
14. Maximum torque required at jackscrew to properly engage or disengage connector shall be 3 inch pounds.
15. Jackscrew wrench size 3/32 hex

P A Navy - EC	International interest	TITLE INSERT (INSULATOR), RECTANGULAR CONNECTOR, POLARIZED CENTER SCREW- LOCK, ELECTRICAL, 36 (SIZE 16 CRIMP REMOVABLE) SOCKET CONTACTS	MILITARY STANDARD
Other Cus AF - 85 Army - EL			MS 18160
Procurement Specification MIL-C-28748		SUPERSEDES	SHEET 3 OF 3

DD FORM 672 (Coordinated) PREVIOUS EDITIONS OF THIS FORM ARE OBSOLETE

5935-2004-10

APPROVED 20 Dec 1965 REVISED © For changes see sheets 1, 2 and 3