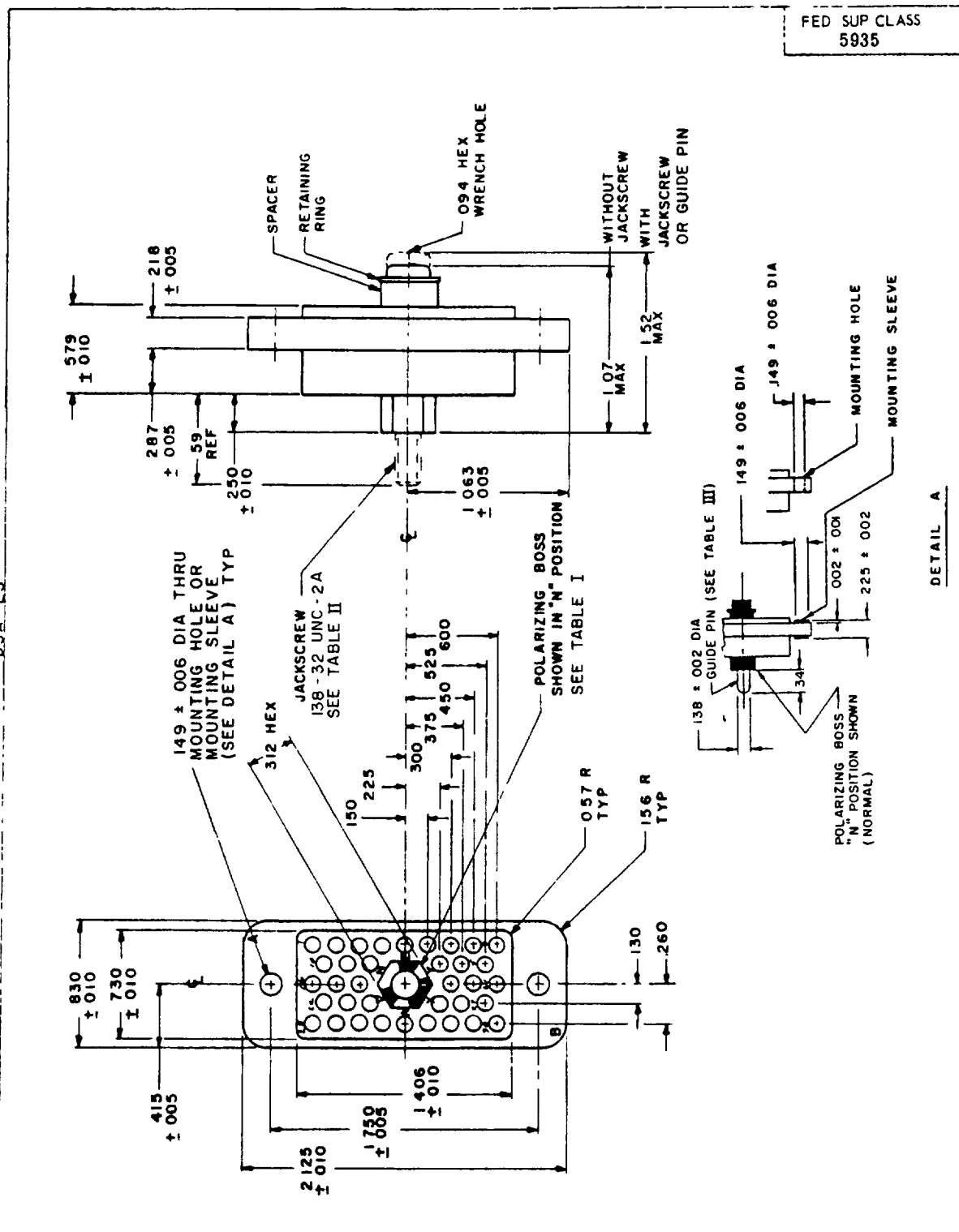


This military standard is approved for use by all Departments and Agencies of the Department of Defense. Selection for all new engineering and design applications and for repetitive use shall be made from this document.

Reviewer activities Army MI, MU, AT
Navy AS, SH, OS
Air Force 11, 99
DSA - ES

User activities Army ME, AV, WC
Navy MC
Air Force



PA Navy - EC	International Interests	TITLE INSERT (INSULATOR), RECTANGULAR CONNECTOR, POLARIZED CENTER SCREW-LOCK, ELECTRICAL, 36 (SIZE 16 CRIMP REMOVABLE) PIN CONTACTS	MILITARY STANDARD
Other C's AF - 85 Army - EL			MS 18159
Previous and Specialation MIL-C-28748		SUPERSEDES	SHEET 1 OF 3

DD FORM 672 (Coordinated) PREVIOUS EDITIONS OF THIS FORM ARE OBSOLETE
1 SEP 63

5935-2004-9

APPROVED 20 Dec 1965 REVISED (A) 29 Jul 1968 (B) 20 May 1970 (C) 8 July 1976

DETAIL A

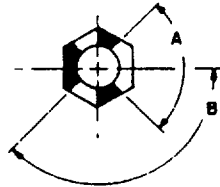
FED SUP CLASS
5935TYPE
SEE TABLE I

TABLE I		
TYPE	A	B
1	90°	135°
2	85°	137° 30'

TABLE II

MS PART NUMBER	POLARIZATION *	JACKSCREW
MS 18159-1N	N (TYPE 1)	SUPPLIED WITH CONNECTOR
MS 18159-1V	V (TYPE 1)	
MS 18159-1W	W (TYPE 1)	
MS 18159-1X	X (TYPE 2)	
MS 18159-1Y	Y (TYPE 2)	
MS 18159-1Z	Z (TYPE 2)	
MS 18159-2N	N (TYPE 1)	NOT SUPPLIED WITH CONNECTOR POLARIZING BOSS THREADED INTERNALLY 138-32 UNC-2B
MS 18159-2V	V (TYPE 1)	
MS 18159-2W	W (TYPE 1)	
MS 18159-2X	X (TYPE 2)	
MS 18159-2Y	Y (TYPE 2)	
MS 18159-2Z	Z (TYPE 2)	

TABLE III

MS PART NUMBER	POLARIZATION *	GUIDE PIN
MS 18159-3N	N (TYPE 1)	SUPPLIED WITH CONNECTOR
MS 18159-3V	V (TYPE 1)	
MS 18159-3W	W (TYPE 1)	
MS 18159-3X	X (TYPE 2)	
MS 18159-3Y	Y (TYPE 2)	
MS 18159-3Z	Z (TYPE 2)	
MS 18159-4N	N (TYPE 1)	NOT SUPPLIED WITH CONNECTOR POLARIZING BOSS WITH 144 * 002 I D TO ACCEPT GUIDE PIN
MS 18159-4V	V (TYPE 1)	
MS 18159-4W	W (TYPE 1)	
MS 18159-4X	X (TYPE 2)	
MS 18159-4Y	Y (TYPE 2)	
MS 18159-4Z	Z (TYPE 2)	

* LARGE OPENING IN POLARIZATION BOSS MUST BE ADJACENT TO
POLARIZATION LETTER ON CONNECTOR BODY

P A Navy - EC	International Interests	TITLE INSERT (INSULATOR), RECTANGULAR CONNECTOR, POLARIZED CENTER SCREW- LOCK, ELECTRICAL, 36 (SIZE 16 CRIMP REMOVABLE) PIN CONTACTS	MILITARY STANDARD
Other Cust: AF - 85 Army - EL			MS 18159
Procurement Specification MIL-C-28748		SUPERSEDES	SHEET 2 OF 3

DD FORM 1 SEP 63 672

(Coordinated) PREVIOUS EDITIONS OF THIS FORM ARE OBSOLETE

5935-2004-9

This military standard is approved for use by all Departments and Agencies of the Department of Defense. Selection for all new engineering and design applications and for repetitive use still in effect from this document.

User activities: Army ME, AV, WC; Navy MC; Air Force
 Reviewer activities: Army MI, MU, AT; Navy AS, SH, OS; Air Force 11, 80; DSA - ES

APPROVED 20 Dec 1965 REVISED (C) For changes see sheets 1, 2 and 3

FED SUP CLASS
5935User activities
Army ME, AV, WC
Navy MC
Air ForceArmy MI, MU, AT
Navy AS, SH, OS
Air Force 11, 80
DSA ES

Reviewer activities

to use by all Departments and Agencies of the Department
Defense Selection for all new engineering and design applications and for repetitive use
Library Standard is
to use by all Departments and Agencies of the Department
Defense Selection for all new engineering and design applications and for repetitive use

INCHES	MM	INCHES	MM
001	03	312	92
002	05	340	8 64
005	13	375	9 53
006	15	415	10 54
010	25	450	11 43
057	1 45	525	13 34
094	2 39	579	14 71
130	3 30	590	14 99
138	3 51	600	15 24
149	3 78	730	18 54
150	3 81	830	21 08
156	3 96	1 063	27 00
218	5 54	1 070	27 18
225	5 72	1 406	35 71
250	6 35	1 520	38 61
260	6 60	1 750	44 45
287	7 29	2 125	53 98
300	7 62		

NOTES

- 1 Dimensions are in inches
- 2 Unless otherwise specified, tolerance is $\pm .015$ (.38 mm)
- 3 Metric equivalents (to the nearest .01 mm) are given for general information only and are based upon 1 inch = 25.4 mm.
- 4 Tolerance between any two adjacent contact centers shall be $\pm .004$ (.10 mm) Tolerance between any two contact centers, other than adjacent contacts, shall be $\pm .006$ (.15 mm)
- 5 Contact hole details shall be in accordance with MIL-C-28748.
- 6 For mating connector see MS18160 (socket body)
- 7 Dimensions symmetrical about centerlines
- 8 For design feature purposes, this standard takes precedence over procurement documents referenced herein
- 9 Reference documents shall be of the issue in effect on date of invitation for bid
- 10 Insert material shall be in accordance with MIL-C-28748
- 11 Flatness, squareness and parallelism shall be within dimensional tolerances
- 12 Center polarizing hardware may be rotated by removing retaining ring and spacer or removing cap (left hand thread) at rear of insert
- 13 Maximum insertion and withdrawal force (connector assembly) shall be 34 pounds.
- 14 Maximum torque required at jackscrew to properly engage or disengage connector shall be 3 inch pounds
- 15 Jackscrew wrench size 3 32 hex

APPROVED 20 Dec 1965 REVISED (C) For changes see sheets 1, 2 and 3

Navy - EC

International
StandardTITLE INSERT (INSULATOR), RECTANGULAR
CONNECTOR, POLARIZED CENTER SCREW-
LOCK, ELECTRICAL, 36 (SIZE 16 CRIMP
REMOVABLE) PIN CONTACTS

MILITARY STANDARD

AF - 85
Army - EL

MS 18159

MIL-C-28748

SUPERSEDES

SHEET 3 OF 3

DD FORM 672 (Coordinated) PREVIOUS EDITIONS OF THIS FORM ARE OBSOLETE

5935-2004-9